

Streichquartett op.5 #2 in F-Dur

vor 1815 (?)

Cello

Franz Krommer (1759 - 1831)

Violoncello

I

[3:2-1]

Allegro moderato

7

13

18

23

sopra una corda

27

33

Solo

38

43

48

56

64



70



76



83



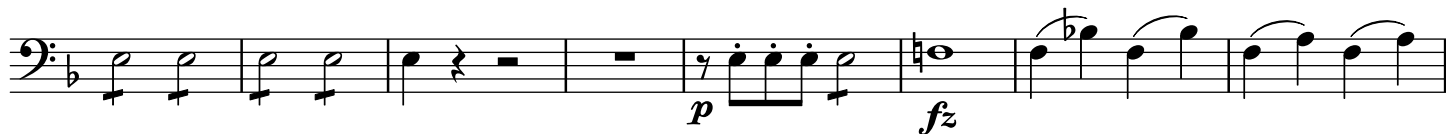
88



93



98



106



112



117

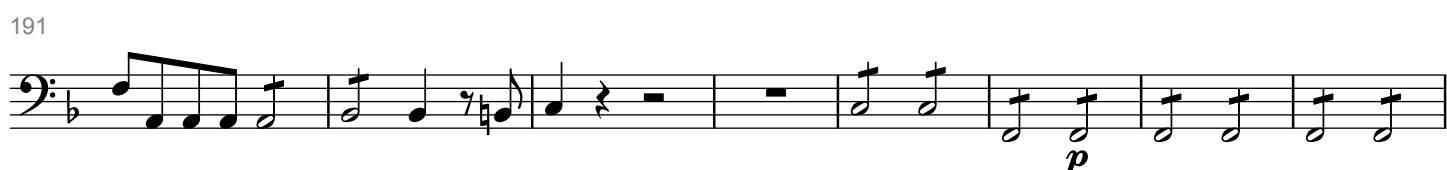


124



130





II

[2]

Adagio



10

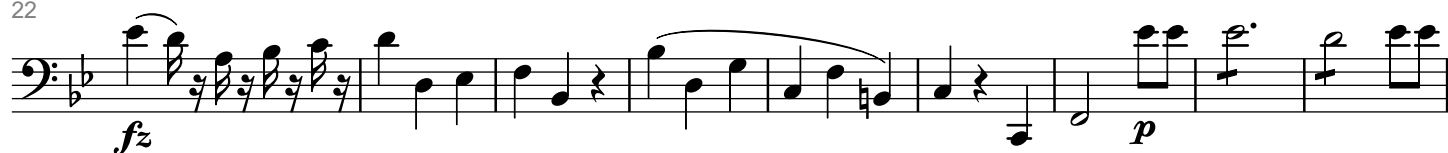
Solo



15



22

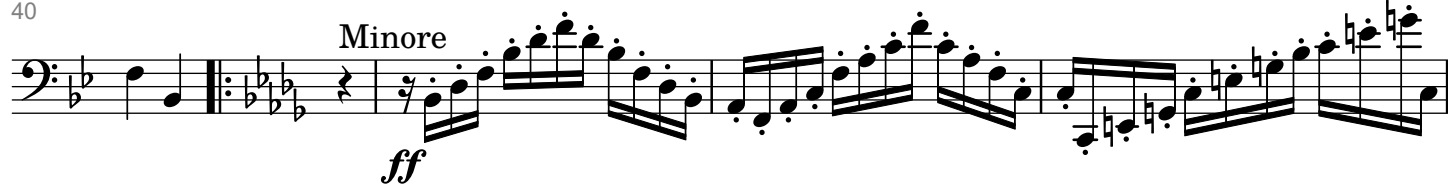


31



40

Minore



44



50



54

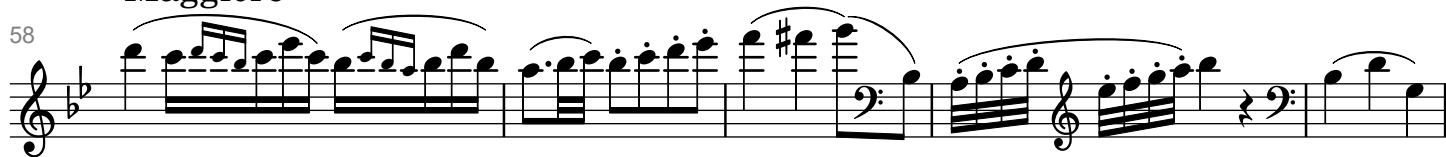


56



Maggiore

58



63



73



81

III RONDO

[2]

Example 10: Musical notation for the bass line, showing a sequence of notes and rests, with a forte (*fz*) dynamic marking.

12

The bass line of 'The Rose Tree' is written in bass clef with a key signature of one flat (B-flat). The melody begins with a quarter rest, followed by a quarter note G2, a quarter note F2, and a quarter note E2. This is followed by a half note D2, a half note C2, and a half note B1. The melody then continues with a quarter note A1, a quarter note G1, and a quarter note F1. This is followed by a half note E1, a half note D1, and a half note C1. The melody concludes with a quarter note B1, a quarter note A1, and a quarter note G1. The piece ends with a double bar line.

21

21

29

29

Pause fehlt
im Original

f *f* *fz* *fz*

40

[illegible]

49


58

Musical notation for the bass line of 'The Rose Tree'. The key signature is one flat (B-flat). The melody is written in a single staff. It begins with a series of eighth notes, followed by a quarter note, and then a series of eighth notes. The melody is marked with a '2' above the staff, indicating a second ending. The notation includes various musical symbols such as beams, slurs, and rests.

69

Minore

Minore



90

Musical notation for the bass line of 'The Rose Tree'. The key signature is B-flat major (two flats). The melody starts with a quarter note G2, followed by a quarter note F2, a quarter note E2, and a quarter note D2. This is followed by a half note C2, a half note B1, and a half note A1. The melody then continues with a quarter note G1, a quarter note F1, a quarter note E1, and a quarter note D1. This is followed by a half note C1, a half note B0, and a half note A0. The melody ends with a quarter note G0, a quarter note F0, a quarter note E0, and a quarter note D0. The notation includes a treble clef, a key signature of two flats, and a final double bar line.

101

113



123



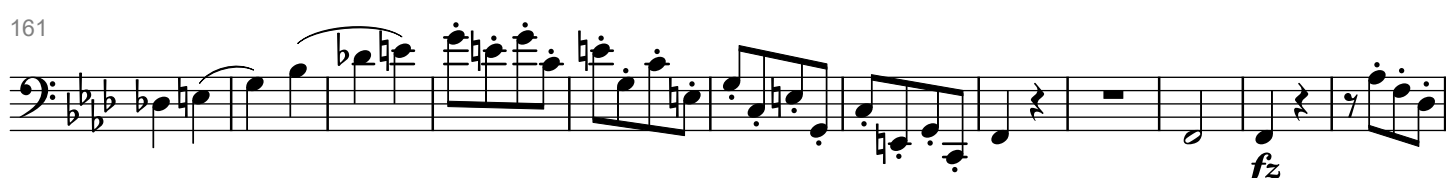
137



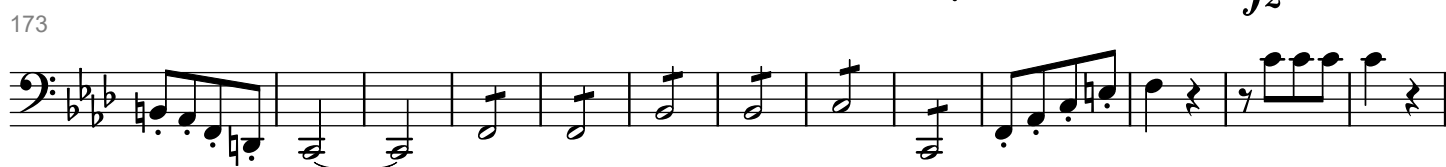
150



161



173



186



196



205



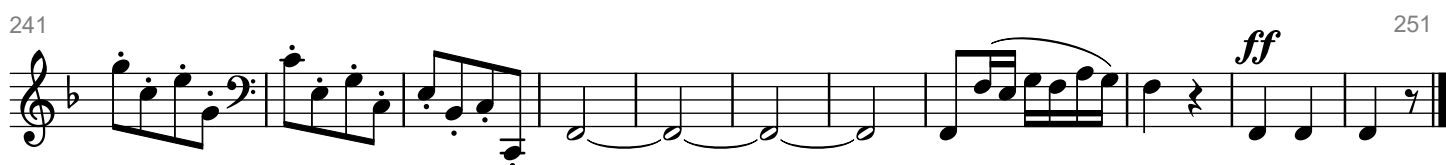
218



228



241



251