

Trio Sonata in B minor

Giuseppe Antonio Brescianello
(ca. 1690-1758)

Largo

Cello

5

10

14

18

Detailed description: This block contains the first system of the Largo section, measures 1 through 18. It is written for Cello in B minor (two sharps) and common time (C). The notation is on a single bass staff. Measures 1-4 show a continuous eighth-note pattern. Measures 5-8 continue this pattern with some rests. Measures 9-12 introduce a repeat sign and a fermata over a half note. Measures 13-18 continue with eighth-note patterns, ending with a repeat sign and a fermata over a half note.

Presto

23

32

41

49

58

Detailed description: This block contains the second system of the Trio Sonata, measures 23 through 58. It is written for Cello in B minor (two sharps) and 3/4 time. Measures 23-31 show a pattern of half notes and quarter notes with many rests. Measures 32-40 continue this pattern. Measures 41-48 show a more active eighth-note pattern. Measures 49-57 continue with eighth-note patterns and some rests, ending with a repeat sign and a fermata over a half note.

2 Cello **Brescianello - Trio Sonata in B minor**

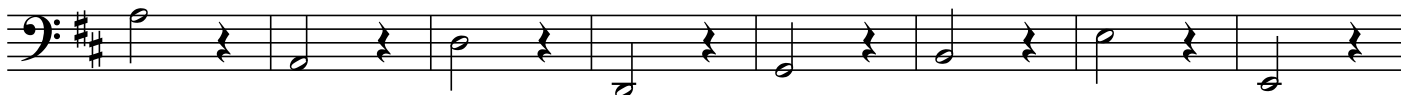
66



74



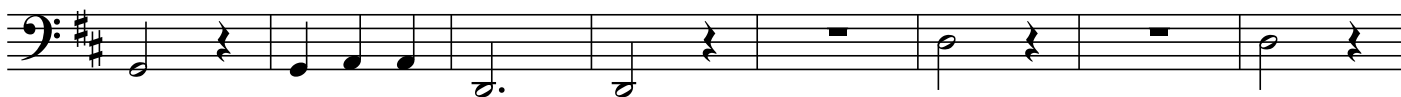
82



90



98



106



114



122



130



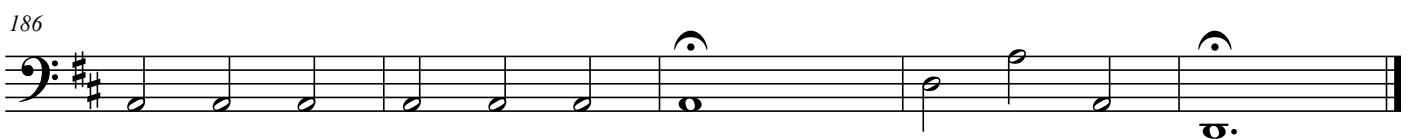
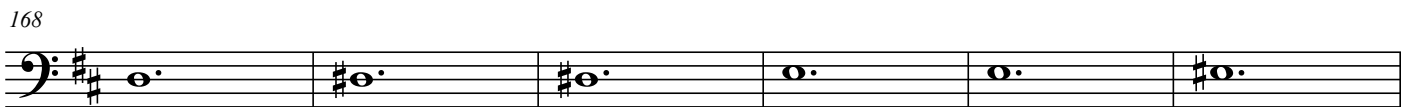
138



146



Adagio



191

Cello

195

199

202

205

210

215 *p*

219

225

229

233

237

241 *p* *f*

Detailed description of the musical score: The score is written for a Cello in B minor (two sharps) and 12/8 time. It consists of 11 staves of music, numbered 191 to 241. The notation includes various rhythmic values: dotted rhythms (e.g., dotted quarter, dotted eighth), eighth notes, sixteenth notes, and whole notes. There are several slurs and ties. Dynamic markings include *p* (piano) at measure 215 and *f* (forte) at measure 241. The piece ends with a fermata on a whole note in measure 241.