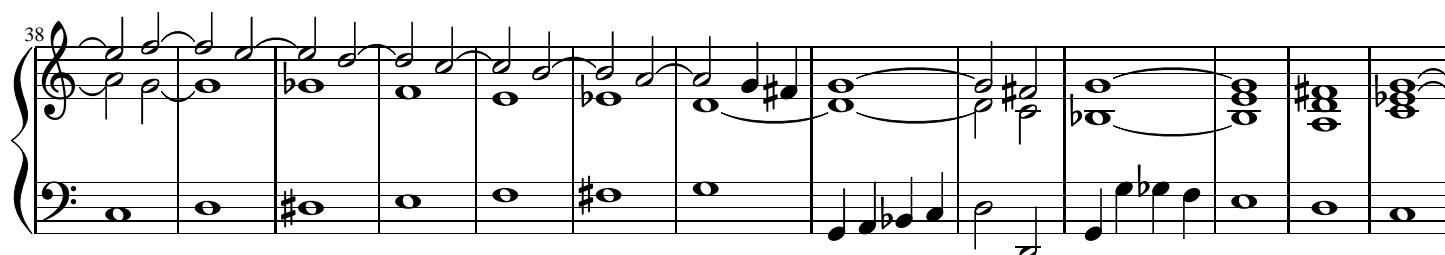
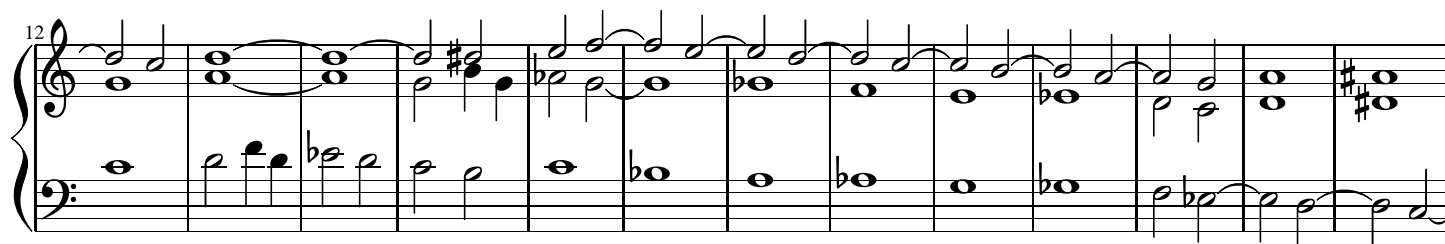


Ricercare e canzona

A John Collins

Carlotta Ferrari 2015

Ricercare di durezza e legature



Canzona vivace

51

System 1, measures 51-58. The piece is in 3/4 time. Measures 51-52 feature a treble clef with a whole note chord of G4, B4, and D5, and a bass clef with a whole note chord of G2, B1, and D2. Measures 53-54 are whole rests. Measures 55-58 show a melodic line in the treble and a supporting bass line. Measure 55: Treble (A4, B4, C5), Bass (G2, A2, B2). Measure 56: Treble (B4, C5, D5), Bass (A2, B2, C3). Measure 57: Treble (C5, D5, E5), Bass (B2, C3, D3). Measure 58: Treble (D5, E5, F#5), Bass (C3, D3, E3).

59

System 2, measures 59-65. Measures 59-60 feature a treble clef with a whole note chord of G4, B4, and D5, and a bass clef with a whole note chord of G2, B1, and D2. Measures 61-65 show a melodic line in the treble and a supporting bass line. Measure 61: Treble (A4, B4, C5), Bass (G2, A2, B2). Measure 62: Treble (B4, C5, D5), Bass (A2, B2, C3). Measure 63: Treble (C5, D5, E5), Bass (B2, C3, D3). Measure 64: Treble (D5, E5, F#5), Bass (C3, D3, E3). Measure 65: Treble (E5, F#5, G5), Bass (D3, E3, F#3).

66

System 3, measures 66-71. Measures 66-71 show a melodic line in the treble and a supporting bass line. Measure 66: Treble (A4, B4, C5), Bass (G2, A2, B2). Measure 67: Treble (B4, C5, D5), Bass (A2, B2, C3). Measure 68: Treble (C5, D5, E5), Bass (B2, C3, D3). Measure 69: Treble (D5, E5, F#5), Bass (C3, D3, E3). Measure 70: Treble (E5, F#5, G5), Bass (D3, E3, F#3). Measure 71: Treble (F#5, G5, A5), Bass (E3, F#3, G3).

72

System 4, measures 72-78. Measures 72-78 show a melodic line in the treble and a supporting bass line. Measure 72: Treble (A4, B4, C5), Bass (G2, A2, B2). Measure 73: Treble (B4, C5, D5), Bass (A2, B2, C3). Measure 74: Treble (C5, D5, E5), Bass (B2, C3, D3). Measure 75: Treble (D5, E5, F#5), Bass (C3, D3, E3). Measure 76: Treble (E5, F#5, G5), Bass (D3, E3, F#3). Measure 77: Treble (F#5, G5, A5), Bass (E3, F#3, G3). Measure 78: Treble (G5, A5, B5), Bass (F#3, G3, A3).

79

System 5, measures 79-84. Measures 79-84 show a melodic line in the treble and a supporting bass line. Measure 79: Treble (A4, B4, C5), Bass (G2, A2, B2). Measure 80: Treble (B4, C5, D5), Bass (A2, B2, C3). Measure 81: Treble (C5, D5, E5), Bass (B2, C3, D3). Measure 82: Treble (D5, E5, F#5), Bass (C3, D3, E3). Measure 83: Treble (E5, F#5, G5), Bass (D3, E3, F#3). Measure 84: Treble (F#5, G5, A5), Bass (E3, F#3, G3).

85

System 6, measures 85-90. Measures 85-90 show a melodic line in the treble and a supporting bass line. Measure 85: Treble (A4, B4, C5), Bass (G2, A2, B2). Measure 86: Treble (B4, C5, D5), Bass (A2, B2, C3). Measure 87: Treble (C5, D5, E5), Bass (B2, C3, D3). Measure 88: Treble (D5, E5, F#5), Bass (C3, D3, E3). Measure 89: Treble (E5, F#5, G5), Bass (D3, E3, F#3). Measure 90: Treble (F#5, G5, A5), Bass (E3, F#3, G3).