

LE JOURNAL DU PRINTEMPS

Suite 1 Ouverture

Basse*Johann Kaspar
Ferdinand Fischer*

7

13

17

21

25

29

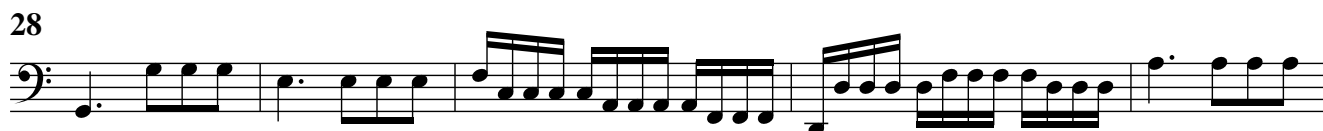
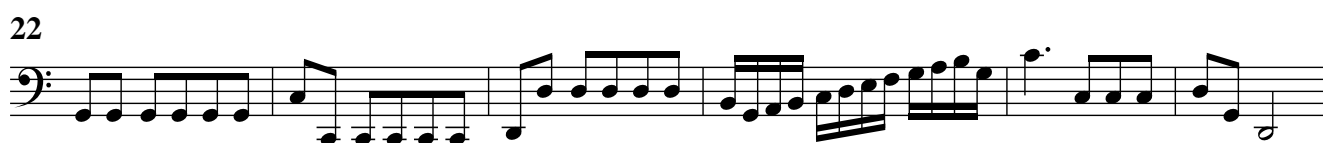
33

Marche



Air des Combattans

Vite



Rigaudon



Menuet



Chaconne



8



16



24



37



49



58



75



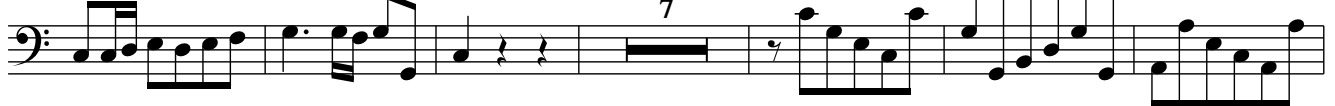
83



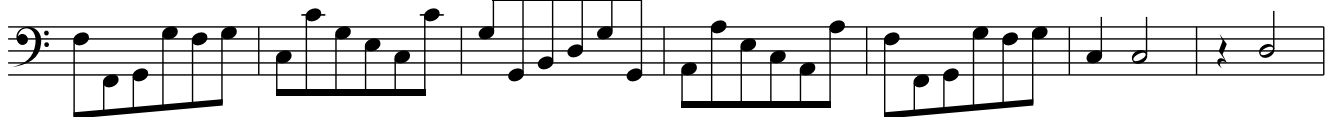
89



95



108



115



129



137

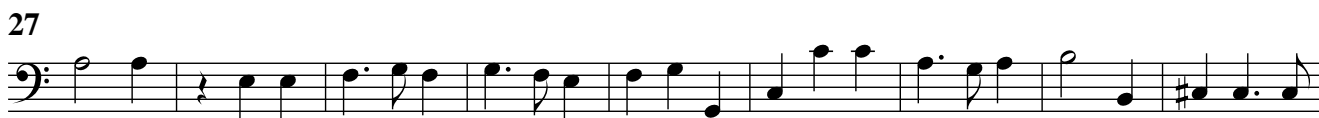


Suite 2

Ouverture

*Johann Kaspar
Ferdinand Fischer*

Basse



Plainte

Lentement

10



14



18



5

27



5

36



5

46



Gique

Vite



5



9



13



18



22



Bourrée



Trio tacet
Bourrée da capo

Menuet



Suite 3

Ouverture

Basse

Johann Kaspar
Ferdinand Fischer

5

10

14

18

22

26

30

35

Menuet



9



Gavotte



6



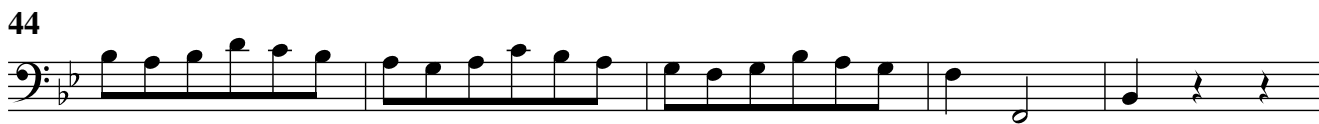
13



Trio tacet

Gavotte da capo

Chaconne



Suite 4

Ouverture

Johann Kaspar
Ferdinand Fischer

Basse

6

11

16

21

26

31

36

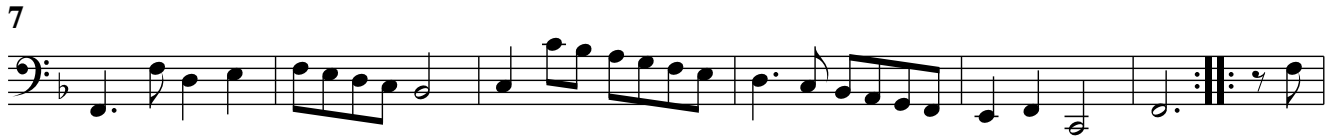
41

46

51

56

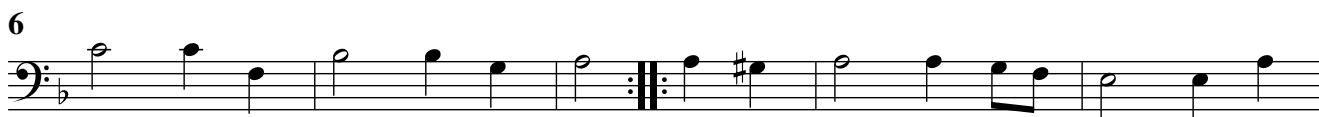
Entrée



Rondeau



Gavotte



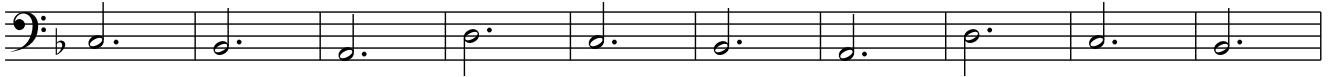
Menuet



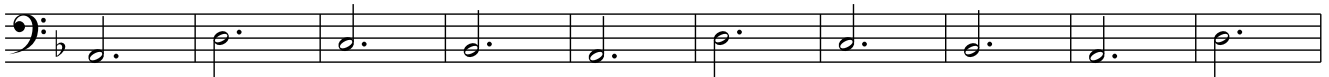
Passacaille



10



20



30



44



54



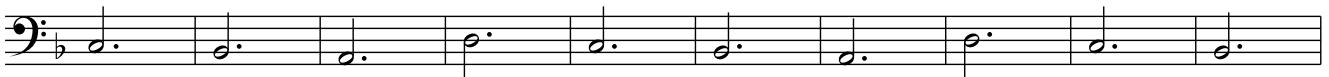
64



73



86



96



105



Suite 5

Ouverture

Basse*Johann Kaspar
Ferdinand Fischer*

6

12

17

24

29

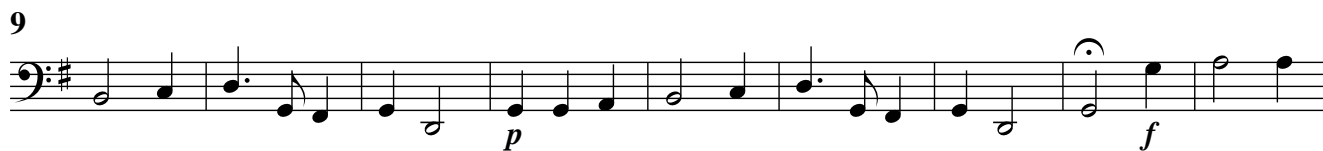
33

38

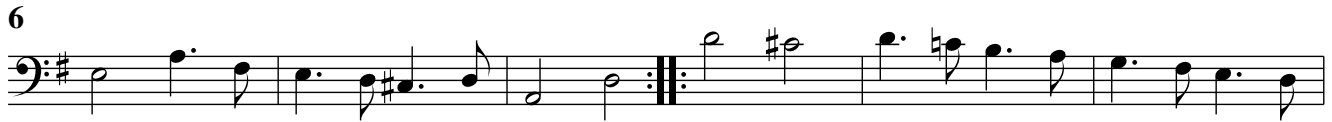
Entrée



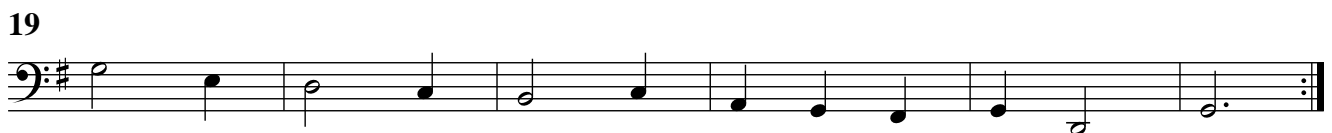
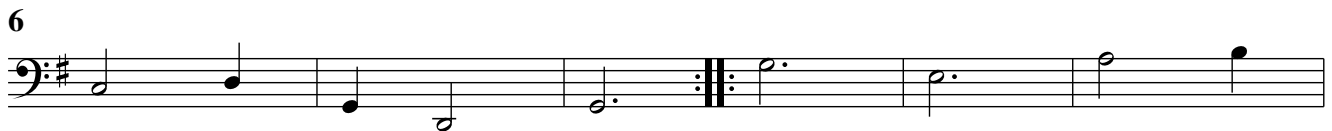
Chaconne



Traquenard



Menuet

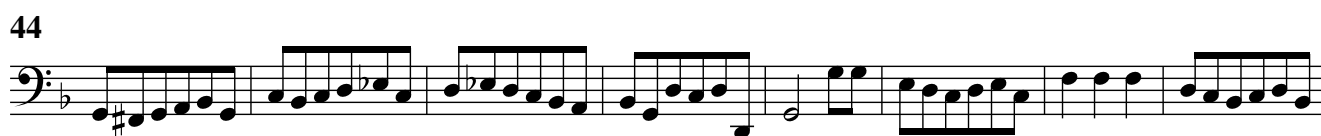
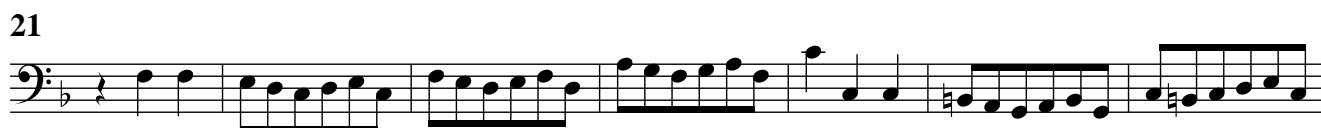


Suite 6

Ouverture

*Johann Kaspar
Ferdinand Fischer*

Basse



Brandle

6

12

19

25

33

1 2 Gay

1 2

Detailed description: This block contains the musical notation for the 'Brandle' piece, bass part, measures 1 through 33. The music is written in bass clef with a key signature of one flat (B-flat). The time signature is common time (C). The notation includes various note values (quarter, eighth, sixteenth notes), rests, and repeat signs. Measure numbers 6, 12, 19, 25, and 33 are indicated at the start of their respective staves. A first ending bracket labeled '1' and a second ending bracket labeled '2' with the word 'Gay' are shown above measures 19 and 20. A final first ending bracket labeled '1' and a second ending bracket labeled '2' are shown above measures 33 and 34.

Amener

8

16

Detailed description: This block contains the musical notation for the 'Amener' piece, bass part, measures 1 through 16. The music is written in bass clef with a key signature of one flat (B-flat). The time signature is 3/4. The notation includes various note values (quarter, eighth, sixteenth notes), rests, and repeat signs. Measure numbers 8 and 16 are indicated at the start of their respective staves.

Gavotte

6

Detailed description: This block contains the musical notation for the 'Gavotte' piece, bass part, measures 1 through 6. The music is written in bass clef with a key signature of one flat (B-flat). The time signature is common time (C). The notation includes various note values (quarter, eighth, sixteenth notes), rests, and repeat signs. Measure number 6 is indicated at the start of its staff.

Courante

5

9

The Courante is written in bass clef with a 3/2 time signature. It consists of two staves. The first staff contains measures 1 through 4. The second staff, starting at measure 5, contains measures 5 through 8, ending with a repeat sign. Measure numbers 5 and 9 are indicated at the start of their respective staves.

Sarabande

9

The Sarabande is written in bass clef with a 3/4 time signature. It consists of two staves. The first staff contains measures 1 through 8, ending with a repeat sign. The second staff, starting at measure 9, contains measures 9 through 16, also ending with a repeat sign. Measure number 9 is indicated at the start of the second staff.

Bourrée

5

11

The Bourrée is written in bass clef with a common time signature. It consists of three staves. The first staff contains measures 1 through 4. The second staff, starting at measure 5, contains measures 5 through 10, ending with a repeat sign. The third staff, starting at measure 11, contains measures 11 through 16, also ending with a repeat sign. Measure numbers 5 and 11 are indicated at the start of their respective staves.

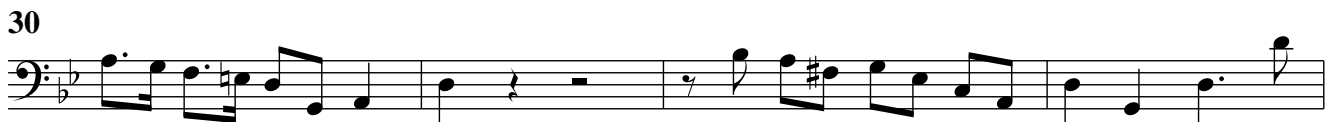
Menuet

9

The Menuet is written in bass clef with a 3/4 time signature. It consists of two staves. The first staff contains measures 1 through 8, ending with a first ending bracket labeled '1' and a second ending bracket labeled '2'. The second staff, starting at measure 9, contains measures 9 through 16, also ending with first and second ending brackets. Measure number 9 is indicated at the start of the second staff.

Suite 7

Ouverture

Basse*Johann Kaspar
Ferdinand Fischer*

Passacaille



11



21



34



40



47



52



57



61



66



81



88



93



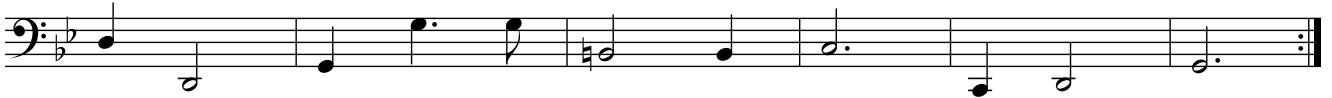
99



105



116



Bourrée



5



11



Menuet



9



17



Suite 8

Ouverture

*Johann Kaspar
Ferdinand Fischer*

Basse

6

12

17

21

25

29

33

37

41

45

52



59



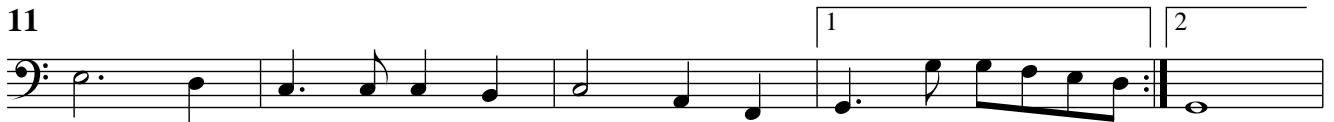
Entrée



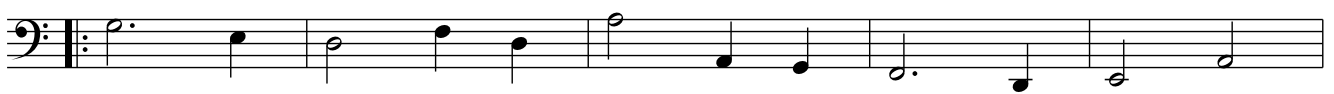
6



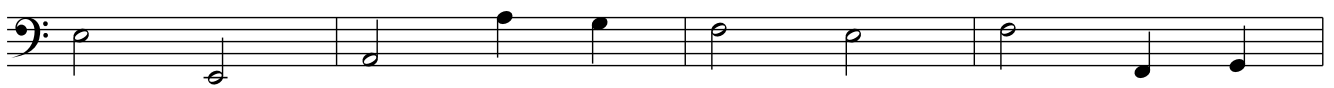
11



15



20



24



Canaries



5



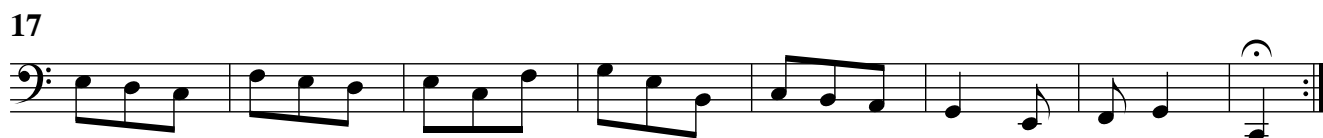
10



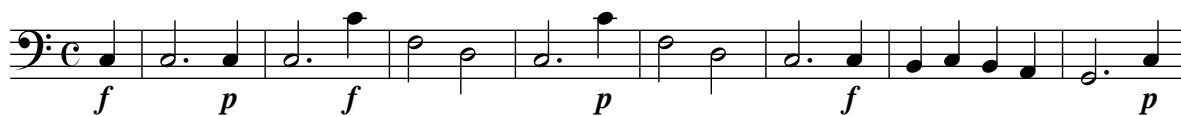
Gavotte en Rondeau



Passepied



Echo



9



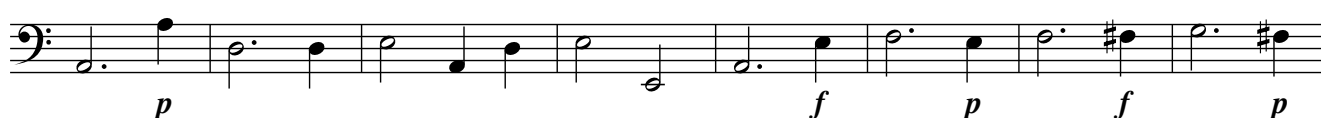
18



26



36



44



Menuet



11



Trio tacet

Menuet da capo