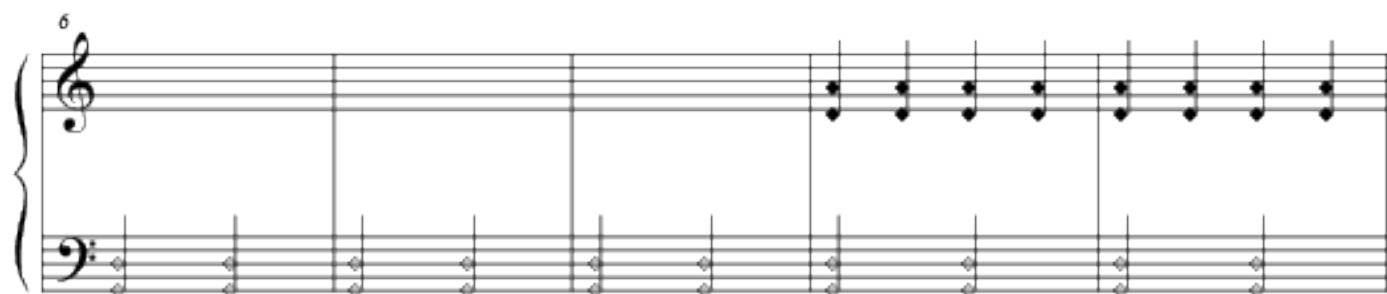


# Campane I

(lo sguardo interiore)



26

This system contains measures 26 through 35. The right hand features a continuous eighth-note arpeggiated pattern. The left hand provides a steady accompaniment with quarter notes and half notes, including some beamed eighth notes.

31

This system contains measures 36 through 45. The right hand continues the eighth-note arpeggiated pattern. The left hand accompaniment remains consistent with the previous system.

36

This system contains measures 46 through 55. The right hand continues the eighth-note arpeggiated pattern. The left hand accompaniment remains consistent with the previous system.

41

This system contains measures 56 through 65. The right hand continues the eighth-note arpeggiated pattern. The left hand accompaniment remains consistent with the previous system.

46

This system contains measures 66 through 75. The right hand continues the eighth-note arpeggiated pattern. The left hand accompaniment remains consistent with the previous system.

51

51

56

56

61

61

66

66

72

72