

"The Flatt Consort"

Set 2

Matthew Locke (1630 - 1677)

1. Fantasia I

♩ = 110

Descant

Tenor

Bass

This system contains three staves. The top staff is labeled 'Descant' and features a treble clef, a key signature of two flats (B-flat and E-flat), and a common time signature (C). It begins with a measure rest, followed by a series of eighth and sixteenth notes, including a triplet of eighth notes. The middle staff is labeled 'Tenor' and also has a treble clef, two flats, and common time. It starts with a half note, followed by eighth and sixteenth notes. The bottom staff is labeled 'Bass' and has a bass clef, two flats, and common time. It begins with a half note, followed by eighth and sixteenth notes. All staves have a '8' above the first measure, indicating an eighth note.

S

T

B

This system contains three staves labeled 'S' (Soprano), 'T' (Tenor), and 'B' (Bass). All staves have a treble clef, a key signature of two flats, and a common time signature. The 'S' staff starts with a half note, followed by eighth and sixteenth notes. The 'T' staff begins with a quarter note, followed by eighth and sixteenth notes. The 'B' staff starts with a half note, followed by eighth and sixteenth notes. All staves have an '8' above the first measure, indicating an eighth note.

S

T

B

This system contains three staves labeled 'S' (Soprano), 'T' (Tenor), and 'B' (Bass). All staves have a treble clef, a key signature of two flats, and a common time signature. The 'S' staff begins with a half note, followed by eighth and sixteenth notes. The 'T' staff starts with a quarter note, followed by eighth and sixteenth notes. The 'B' staff begins with a half note, followed by eighth and sixteenth notes. All staves have an '8' above the first measure, indicating an eighth note.

21 ⁸

S

T

B

25 ⁸

S

T

B

31 ⁸

S

T

B

38 ⁸

S

T

B

45 ⁸

S 

T 

B 

50 ⁸

S 

T 

B 

54 ⁸

S 

T 

B 

58 ⁸

S 

T 

B 

62 8

S

T

B

67 8

S

T

B

2. Courant

$\text{♩} = 160$

Descant

Tenor

Bass

8

S

T

B

16

S

T

B

24

S

T

B

33

S

T

B

41 ⁸

S

T

B ⁸

3. Fantasia II

$\text{♩} = 110$

Descant

Tenor

Bass ⁸

⁸ S

T

B ⁸

14 ⁸

S

T

B

20 ⁸

S

T

B

26 ⁸

S

T

B

32 ⁸

S

T

B

38 ⁸

S

T

B

46 ⁸

S

T

B

52 ⁸

S

T

B

56 ⁸

S

T

B

60 ⁸

S

T

B

64 ⁸

S

T

B

68 ⁸

S

T

B

72 ⁸

S

T

B

77 ⁸

S

T

B

4. Saraband

$\text{♩} = 100$

8

Descant

Tenor

Bass

9 ⁸

S

T

B

14 8

S

T

B

21 8

S

T

B

5. Fantasia III

$\text{♩} = 110$

Descant

Tenor

Bass

7 8

S

T

B

13 8

S

T

B

19 8

S

T

B

24 8

S

T

B

29 ⁸

S

T

B

34 ⁸

S

T

B

41 ⁸

S

T

B

47 ⁸

S

T

B

52 8

S

T

B

56 8

S

T

B

60 8

S

T

B

6. Jigg

$\text{♩} = 70$

Descant

Tenor

Bass

4

S

T

B

$\text{♩} = 100$

8

S

T

B

13

S

T

B

1. Fantasia I

♩ = 110

8

11

20

26

35

43

51

57

62

66

2. Courant

♩ = 160

Musical score for '2. Courant' in 3/4 time, key of B-flat major. The score consists of five staves of music. The first staff begins with a treble clef, a key signature of two flats (B-flat major), and a 3/4 time signature. It starts with a whole rest, followed by a measure with a '2' above it, indicating a second ending. The melody is written in a single line. The second staff continues the melody, featuring a series of eighth and sixteenth notes. The third staff includes a repeat sign and a key signature change to one flat (F major). The fourth and fifth staves continue the melody, ending with a double bar line and repeat dots.

3. Fantasia II

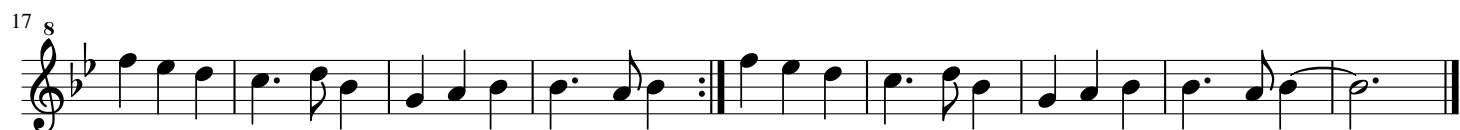
♩ = 110

Musical score for '3. Fantasia II' in common time (C), key of B-flat major. The score consists of five staves of music. The first staff begins with a treble clef, a key signature of two flats (B-flat major), and a common time signature. It starts with a whole note, followed by a series of eighth and sixteenth notes. The second staff continues the melody, featuring a series of eighth and sixteenth notes. The third staff includes a key signature change to one flat (F major). The fourth and fifth staves continue the melody, ending with a double bar line and repeat dots.



4. Saraband

$\text{♩} = 100$



5. Fantasia III

$\text{♩} = 110$



15 8

22 8

28 8

36 8

44 8

51 8

57 8

6. Jigg

$\text{♩} = 70$

8

6 8 $\text{♩} = 100$

12 8

Tenor Recorder

"The Flatt Consort"

Set 2

Matthew Locke (1630 - 1677)

1. Fantasia I

♩ = 110

11

19

25

33

41

49

55

60

65

2. Courant

♩ = 160

8

15

30

38

3. Fantasia II

♩ = 110

2

9

14

19

26



32



38



46



51



55



60



65



70



75



4. Saraband

♩ = 100



Musical score for 4. Saraband, featuring a single melodic line in treble clef, key of B-flat major (two flats), and 3/4 time. The tempo is marked as ♩ = 100. The score consists of three staves of music. The first staff contains measures 1 through 8, ending with a repeat sign. The second staff contains measures 9 through 15, with a key signature change to C major (no flats) at measure 12. The third staff contains measures 16 through 22, ending with a final double bar line.

5. Fantasia III

♩ = 110



Musical score for 5. Fantasia III, featuring a single melodic line in treble clef, key of B-flat major (two flats), and common time (C). The tempo is marked as ♩ = 110. The score consists of six staves of music. The first staff contains measures 1 through 5. The second staff contains measures 6 through 10. The third staff contains measures 11 through 17. The fourth staff contains measures 18 through 22. The fifth staff contains measures 23 through 26. The sixth staff contains measures 27 through 31. The score ends with a final double bar line at measure 31.

37



43



47



51



56



60



6. Jigg

$$d = 70$$


5



♩ = 100

8



13



Bass Recorder

"The Flatt Consort"

Set 2

Matthew Locke (1630 - 1677)

1. Fantasia I

♩ = 110

8

12

20

26

34

42

48

54

60

65

2. Courant

♩ = 160

8

11

8

34

Detailed description: This block contains the first four systems of music for '2. Courant'. The music is written in bass clef with a key signature of two flats (B-flat and E-flat) and a 3/4 time signature. The tempo is marked as ♩ = 160. The first system (measures 1-8) starts with a quarter rest followed by a series of eighth and quarter notes. The second system (measures 9-16) continues the melodic line with some beamed eighth notes. The third system (measures 17-24) features a repeat sign at the beginning and includes a triplet of eighth notes. The fourth system (measures 25-34) ends with a double bar line and repeat dots.

3. Fantasia II

♩ = 110

8

13

25

32

40

48

Detailed description: This block contains the first six systems of music for '3. Fantasia II'. The music is written in bass clef with a key signature of two flats (B-flat and E-flat) and a common time signature (C). The tempo is marked as ♩ = 110. The first system (measures 1-8) includes a six-measure rest marked with a '6'. The second system (measures 9-16) includes a five-measure rest marked with a '5'. The third system (measures 17-24) continues the melodic development. The fourth system (measures 25-32) features a triplet of eighth notes. The fifth system (measures 33-40) includes a sharp sign (F#) in the key signature. The sixth system (measures 41-48) ends with a double bar line and repeat dots.

54



60



67



74



4. Saraband

♩ = 100



11

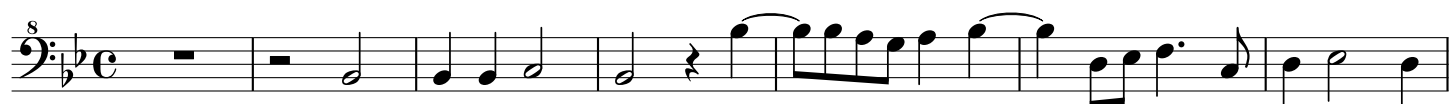


21



5. Fantasia III

♩ = 110



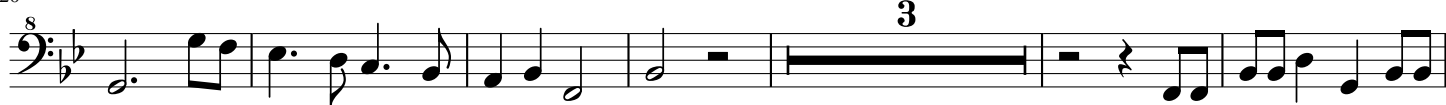
8



14



20



29



34



41



47



53



58



6. Jigg

♩ = 70



8

♩ = 100

