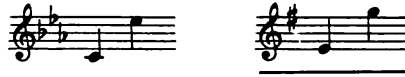


PARADOX

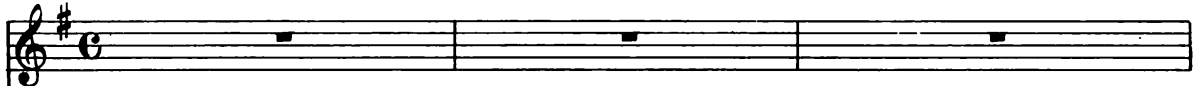


ROBERT H. DAVIS

CHARLES WAKEFIELD CADMAN, Op. 66, No. 1

Andante, con moto

VOICE



PIANO



melodia marcato

mp

I dream of you with o-pen eyes. I

mp

speak to you though dumb. Though seem - ing near You are not

here. My own-though nev - - er won. The

mp
rall.
mf

Detailed description: This system contains the first two lines of the musical score. The vocal line is in treble clef with a key signature of one sharp (F#). The lyrics are "here. My own-though nev - - er won. The". The piano accompaniment is in grand staff (treble and bass clefs) with the same key signature. It features a steady eighth-note accompaniment in the right hand and a more active bass line in the left hand. Dynamic markings include *mp* (mezzo-piano) and *mf* (mezzo-forte). A *rall.* (rallentando) marking is present over a triplet of eighth notes in the right hand.

lands and seas be - tween us lie. We're

a tempo

Detailed description: This system contains the third and fourth lines of the musical score. The vocal line continues with the lyrics "lands and seas be - tween us lie. We're". The piano accompaniment continues with the same rhythmic pattern. A *a tempo* marking is placed at the beginning of the piano part.

whole wide worlds a - part. Yet 'cross the space — I see your

Detailed description: This system contains the fifth and sixth lines of the musical score. The vocal line has the lyrics "whole wide worlds a - part. Yet 'cross the space — I see your". The piano accompaniment continues with the same rhythmic pattern.

face — And hear your beat - ing heart, your — heart.

a tempo
mf

Detailed description: This system contains the seventh and eighth lines of the musical score. The vocal line has the lyrics "face — And hear your beat - ing heart, your — heart.". The piano accompaniment continues with the same rhythmic pattern. Dynamic markings include *a tempo* and *mf*. A triplet of eighth notes is marked with a '3' in the right hand.

mf rall.

My

mp rall.

3

a tempo

star - - light in a star - less sky; My

a tempo

dark - ness and my dawn. My break of day Fade not a -

way. Oh, let the light shine on. I

mf

3

love you though you must not know. _____ You

are my ver - y breath; Through all the years — My hopes and

fears — My life - a - las! — my — death!

mf *mf* *con moto* *f marcato*

3 3

God Smiled Upon the Desert

ELIZABETH GORDON

CHARLES WAKEFIELD CADMAN, Op. 64, No. 3

VOICE *Maestoso*
God smiled.

PIANO *ff*

VOICE *Andante semplissimo*
God smiled up on the des-ert, and there

PIANO *mp*
con Ped.

VOICE
grew a wo-drous flow-er, a wo-drous flower of gor-geoushchen and hue,

PIANO

Copyright, 1917, by White-Smith Music Publishing Co.
International Copyright Secured

THE GIFT OF PAN

DELIA ELLEN CHAMPLIN

WARREN STOREY SMITH

VOICE *Lento*
Pan came to my gar-den gate,—

PIANO *p* *pp* *p* *pp* *pp*

VOICE *cresc.* *rall.* *pp a tempo*
Came last night as the dusk was fall-ing, Sweet-ly flut-ing up-on his pipes, And

PIANO *cresc.* *pp*

VOICE *pp rall.* *a tempo*
call-ing, call-ing. I went down to the gar-den gate,—

PIANO *mf* *pp rall.* *a tempo*

Copyright, 1917, by White-Smith Music Publishing Co.
International Copyright Secured

Love Like the Dawn Came Stealing

Gilbert Moyle

Charles Wakefield Cadman
Op. 64, No. 2

VOICE *At a reasonable tempo; not dragged*
Love like the dawn came steal-ing Up-

PIANO *mf* *mp*

VOICE *poco cresc.*
on a world of night Un-to the soul re-

PIANO *poco cresc.*

VOICE *poco rall.*
veal-ing Light! Now

PIANO *poco rall.*

Copyright, 1917, by White-Smith Music Publishing Co.
International Copyright Secured

A JUNE PASTORAL

CARYL B. STORRS

META SCHUMANN

PIANO *Allegro (M.M. ♩ = 104)*
ff brillante *dim. a rit.* *a tempo*

PIANO *poco rall.* *p* *a tempo*

The grass is long, the branch-es low, And the

PIANO *rit.* *a tempo*

wild grape bloom is sweet; The ants are build-ing their

PIANO *rit.* *a tempo*

vil-lage nests Where the fern fronds bend and meet. The

Copyright, 1917, by White-Smith Music Publishing Co.
International Copyright Secured