

Tenor

# A Collection of Trios for Soprano, Alto and Tenor instrument

$\text{♩} = 160$

## 1. Der Bauernswanz (Glogauer Liederbuch) (Anonymus)

8

9

17

31

Musical score for 'Der Bauernswanz' (Glogauer Liederbuch) (Anonymus). The score is written for Tenor and consists of 31 measures. It begins with a treble clef, a common time signature (C), and a key signature of one flat (B-flat). The tempo is marked as  $\text{♩} = 160$ . The score is divided into four systems, each starting with a measure number in a box: 8, 9, 17, and 31. The music features a mix of eighth and sixteenth notes, with some measures containing rests. The piece concludes with a double bar line.

## 2. Fantasia ex g a 3 (John Bull)

8

11

20

30

38

46

53

Musical score for 'Fantasia ex g a 3' (John Bull). The score is written for Tenor and consists of 53 measures. It begins with a treble clef, a 2/4 time signature, and a key signature of one flat (B-flat). The score is divided into six systems, each starting with a measure number in a box: 8, 11, 20, 30, 38, and 46. The music features a mix of eighth and sixteenth notes, with some measures containing rests. The piece concludes with a double bar line.

Tenor

### 3. Fantasia XXIX à 3 sur une jeune fillette (E. Du Caurroy)

5

11

20

2

8

Detailed description: This block contains the first three staves of the musical score for 'Fantasia XXIX à 3 sur une jeune fillette' by E. Du Caurroy, for Tenor. The first staff starts with a treble clef, a key signature of one flat (B-flat), and a 4/2 time signature. It contains a series of eighth and quarter notes. The second staff is marked with a box containing the number '5' and continues the melody. The third staff is marked with a box containing the number '11' and includes a measure with a '2' above it, indicating a second ending. The fourth staff is marked with a box containing the number '20' and ends with a double bar line.

### 4. La Brava (V. Ruffo, Capricci in musica a 3 voci)

8

13

19

23

28

36

41

2

8

Detailed description: This block contains the musical score for 'La Brava' by V. Ruffo, from 'Capricci in musica a 3 voci'. It consists of seven staves. The first staff is marked with a box containing the number '2' and starts with a treble clef, a key signature of one flat, and a 4/2 time signature. The subsequent staves are marked with boxes containing the numbers '8', '13', '19', '23', '28', '36', and '41'. The music features various rhythmic patterns, including eighth and sixteenth notes, and rests. The final staff ends with a double bar line.

Tenor  
5. Trio de la Troisième Mode (P. Philippo, Institution harmonique)

8

10

15

21

26

32

40

45

51

56

# 6. Browning a 3 (E. Bevin)

Tenor

8

18

28

37

44

55

62

69

78

88

98

108

Tenor

### 7. Echo Allegro (A. Kühnel, Sonata VI)

Measures 1-43 of Echo Allegro. The piece is in G major, 8/8 time. It features a melodic line with alternating forte (f) and piano (p) dynamics. Measure 15 is marked with a box containing the number 15. Measure 29 is marked with a box containing the number 29. Measure 43 is marked with a box containing the number 43. The piece concludes with a double bar line and repeat dots.

### 8. Gavotte Allegro (A. Kühnel, Sonata VI)

Measures 1-7 of Gavotte Allegro. The piece is in G major, 8/8 time. It features a melodic line with alternating forte (f) and piano (p) dynamics. Measure 7 is marked with a box containing the number 7. The piece concludes with a double bar line and repeat dots.

### 9. Sarabande Adagio (A. Kühnel, Sonata VI)

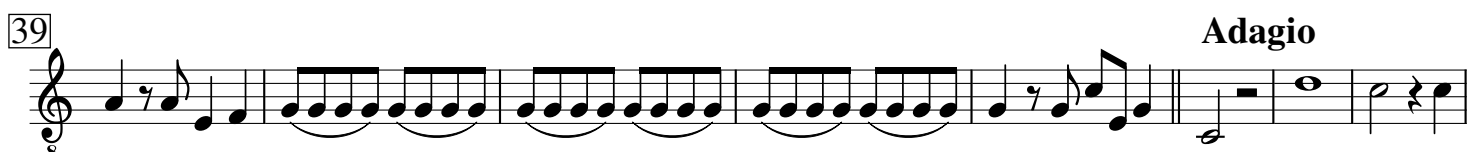
Measures 1-18 of Sarabande Adagio. The piece is in G major, 3/4 time. It features a melodic line with alternating forte (f) and piano (p) dynamics. Measure 10 is marked with a box containing the number 10. Measure 18 is marked with a box containing the number 18. The piece concludes with a double bar line and repeat dots.

### 10. Giga Allegro (A. Kühnel, Sonata VI)

Measures 1-30 of Giga Allegro. The piece is in G major, 3/4 time. It features a melodic line with alternating forte (f) and piano (p) dynamics. Measure 16 is marked with a box containing the number 16. Measure 30 is marked with a box containing the number 30. The piece concludes with a double bar line and repeat dots.

# 11. Ouverture (C. Graupner, GWV 401)<sup>Tenor</sup>

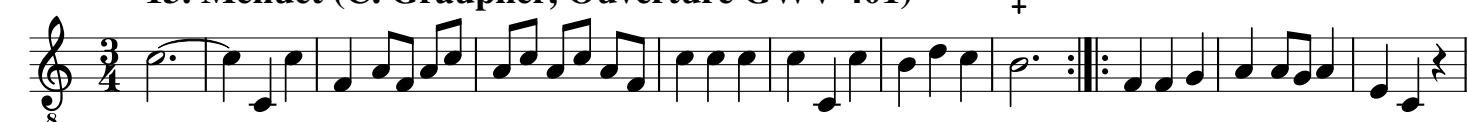
Adagio



## 12. Air affettuoso (C. Graupner, Ouverture GWV 401)

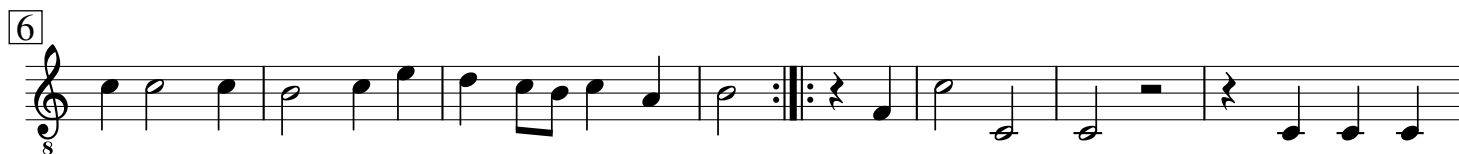


## 13. Menuet (C. Graupner, Ouverture GWV 401)

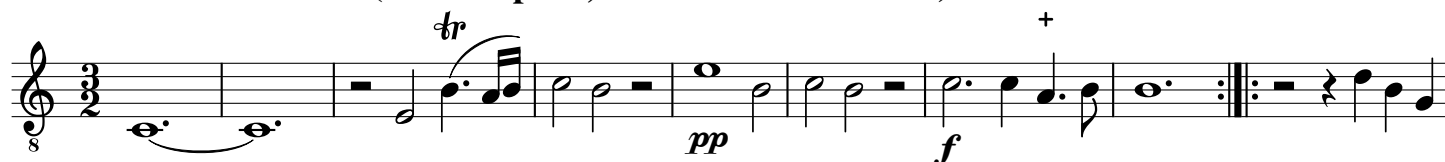


Tenor

# 14. Gavotte (C. Graupner, Ouverture GWV 401)



# 15. Sarabande (C. Graupner, Ouverture GWV 401)



# 16. Echo (C. Graupner, Ouverture GWV 401)



Tenor  
17. Fughetta 1 (G.F. Händel, 6 kleine Fugen)

6

15

29

41

50

16. Gavotte (J.S. Bach, Französische Suite Nr. 5, BWV 816)

7

13

18

22