

Suite B-Dur (Nr. 2)

Ouverture

J. A. Reichenauer

Violino I

[Adagio]

6

11

18

26

34

42

57

66

74

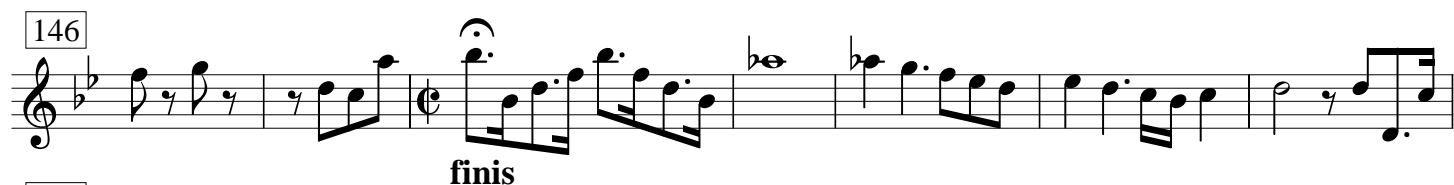
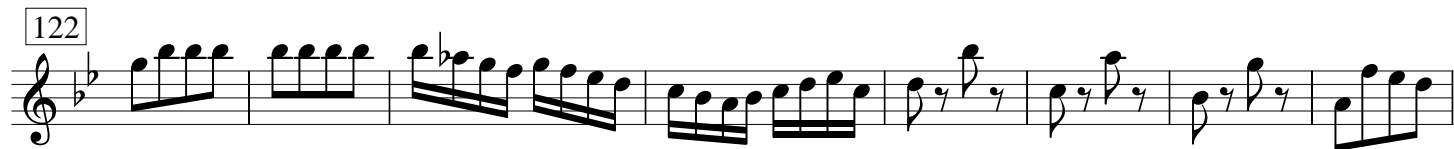
82

90

1. 2. *Presto* %

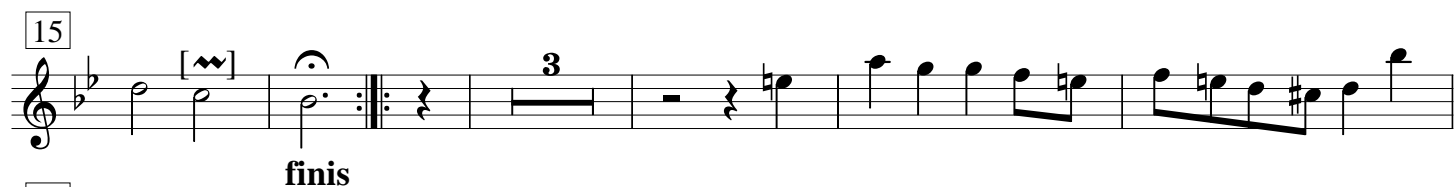
5

3



[Bourrée]

[Allegro]



da capo

Aria

Andante

7

15

28

37

48

56

64

p

f

finis

da capo

Gavotte

6

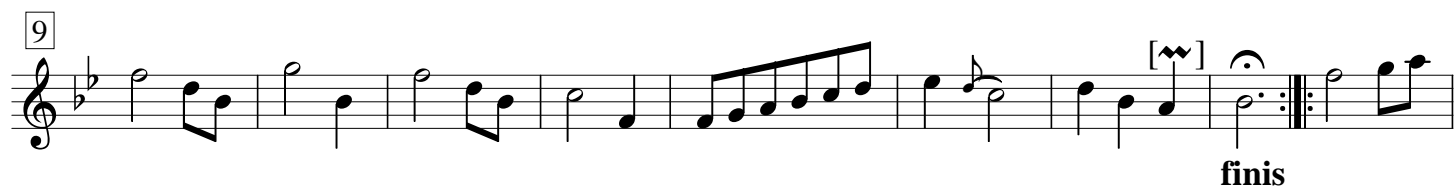
12

21

f



Menuet



Duetto



Menuet da capo