

Viola

Sonata Opus 5 nr 4

A. Corelli
Arr. G.H.Kruithof

Adagio

Measures 1-15 of the Adagio section. The music is in 4/4 time with a key signature of one flat (B-flat). The notation features a variety of note values including eighth, quarter, and half notes, often beamed together in groups. Slurs are used to indicate phrasing across several measures. Measure numbers 6, 11, and 15 are marked at the beginning of their respective staves.

Allegro

Measures 16-23 of the Allegro section. The tempo and key signature remain the same as the Adagio section. The music is characterized by rapid sixteenth-note passages, often with slurs and accents. Measure numbers 5, 10, 16, 21, and 23 are marked at the beginning of their respective staves.

2

25



27



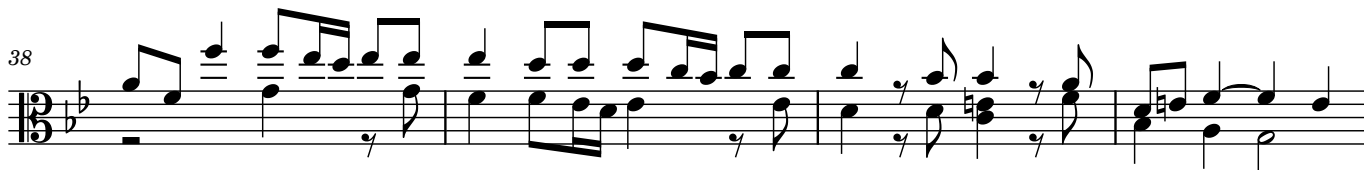
30



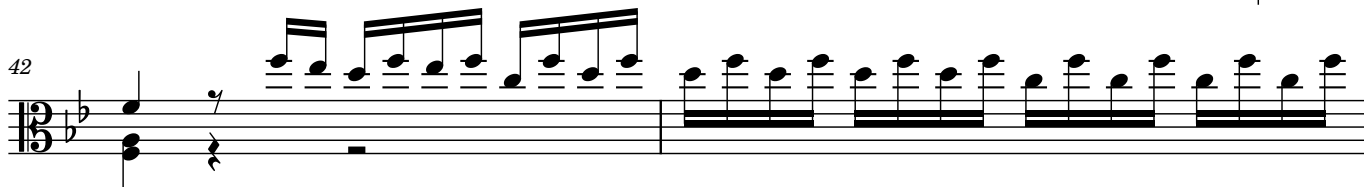
33



38



42



44



46



50

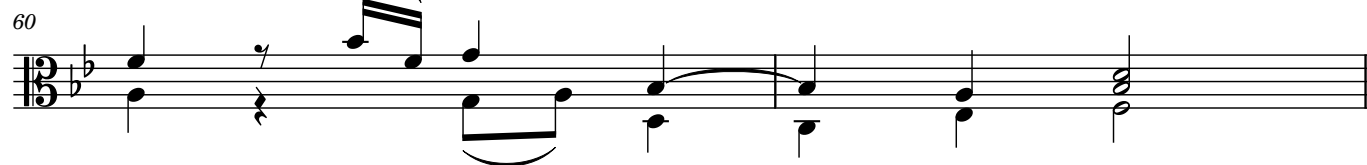


55



Adagio

3



Vivace

4

7

14

20

24

28

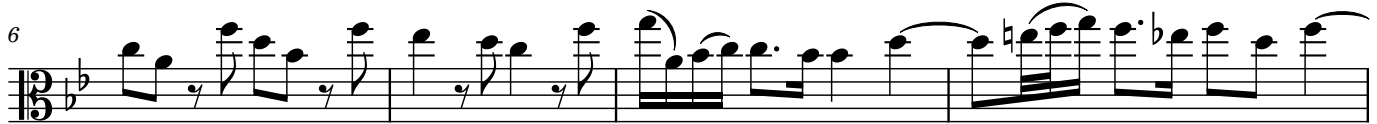
34

40

47

54

Adagio



6

Allegro