

Streichquartett op.5 #1 in Es-Dur

vor 1815 (?)

Viola

Franz Krommer (1759 - 1831)

Viola

I

[3:2-1]

Allegro moderato

8 *p* *fz* *fz* *fz*

14 *fz* *fz*

20 *fz* *fz*

24

29 *f* *fz* *fz* *fz* *fz* *fz* Solo

35 *fz* *fz* *fz* *fz*

41 *fz* *fz* Solo

46

52 *f* *f*

57

63 *f* *p* *f* *p*

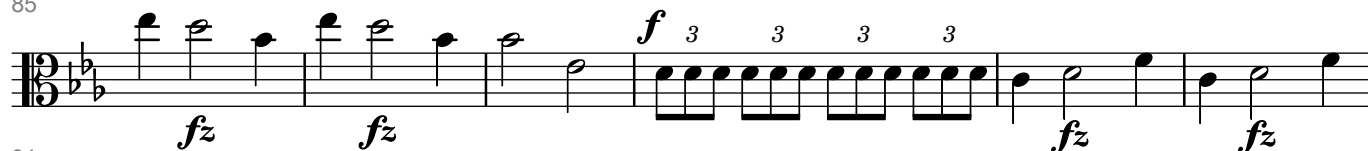
71



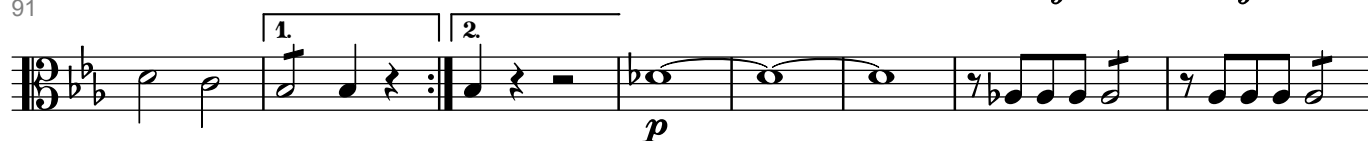
77



85



91



99



107



114



119



125



131



136



143



149



155



158



161



165



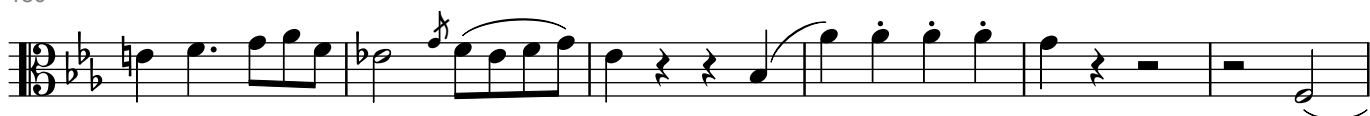
169



174



180



186



191



198



206



213



221



II

[1]

(Andante) Allegretto

8

16

24

32

39

46

53

61

68

76

85

93

III RONDO

[2]

Moderato

8 *f*

16

23 *p*

31 *f fz fz p*

40 *f*

50 *p*

60

70

77 *Solo*

83

90 *f*

98 *fz*

106

106

115

122

130

[illegible]

139

146

[illegible]

155

Musical notation for the bass line of 'The Rose Tree' in G minor, measures 1-8. The notation is in 6/8 time and features a mix of eighth and sixteenth notes, with some beamed sixteenth notes in measure 1.

163

170

[illegible]

178

186

192

200

207