

Sonata, (Paris No. 3, RV 43)

Antonio Vivaldi (1678-1741),

Largo

Bass Viol 1

Bass Viol 2



7

tr



14

tr



21

tr



28



34

tr

tr



41 *Allegro 1*

Measures 41-43 of the piece. The music is in common time (C) and features a bass clef. The melody in the upper staff consists of eighth and sixteenth notes, while the lower staff provides a harmonic accompaniment with eighth notes and rests.

Measures 44-47. The melody continues with more complex rhythmic patterns, including triplets and sixteenth notes. The lower staff maintains a steady accompaniment.

Measures 48-51. Measure 50 features a trill (tr) on the upper staff. The lower staff continues with a consistent rhythmic pattern.

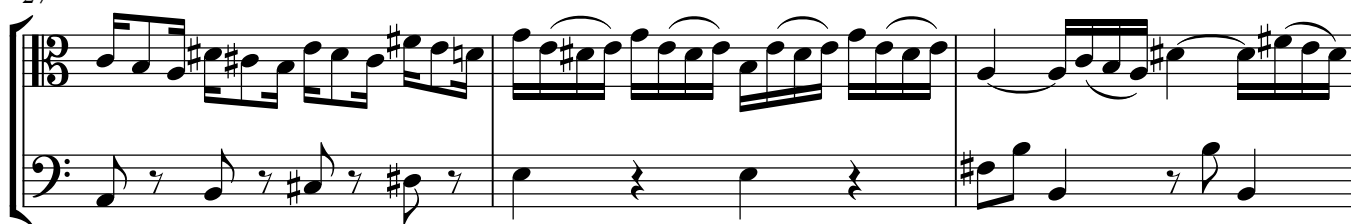
Measures 52-55. The melody in the upper staff shows a variety of note values, including eighth and sixteenth notes. The lower staff provides a steady accompaniment.

Measures 56-59. The upper staff features a series of beamed sixteenth notes, creating a rapid melodic line. The lower staff continues with a steady accompaniment.

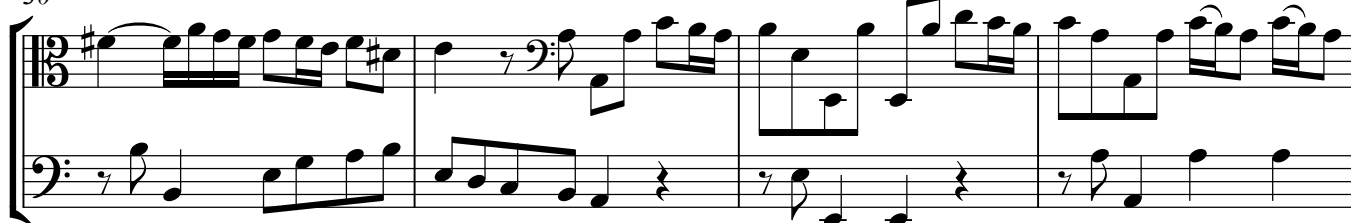
Measures 60-63. Measure 60 begins with a trill (tr). The music includes a repeat sign and a key signature change to B-flat major (two flats) in measure 62.

Measures 64-67. The upper staff continues with a melodic line in B-flat major, featuring eighth and sixteenth notes. The lower staff provides a steady accompaniment.

27



30



34



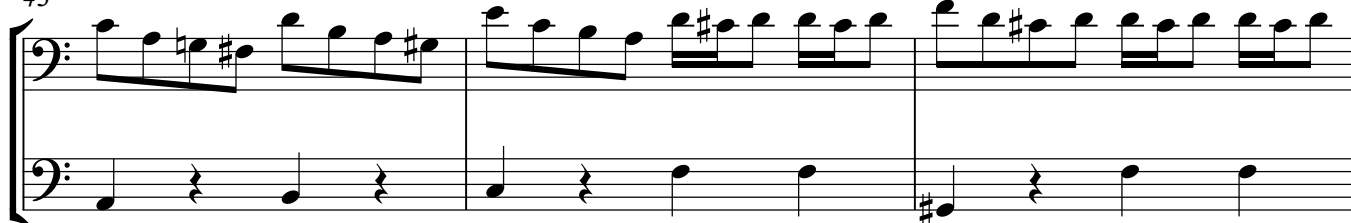
37



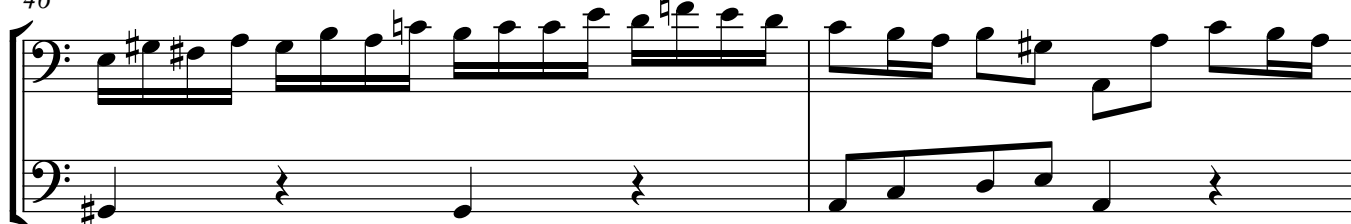
40



43



46



48

13

1 Largo

7

7

13

tr

19

tr

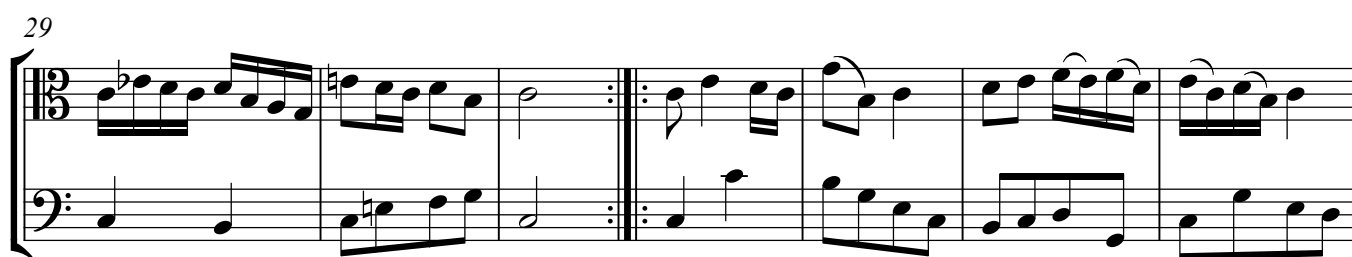
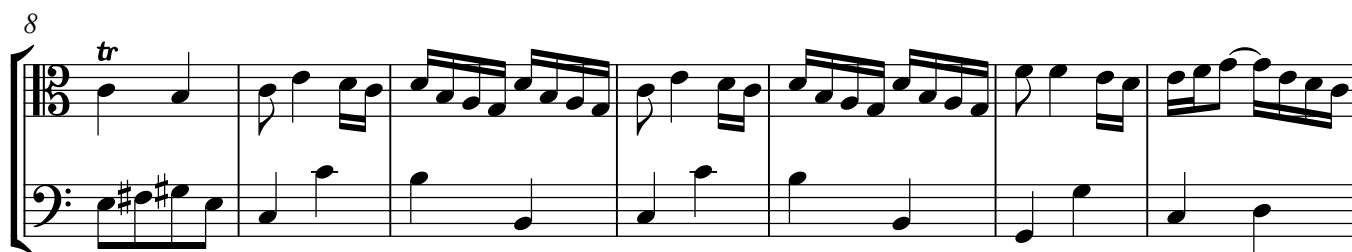
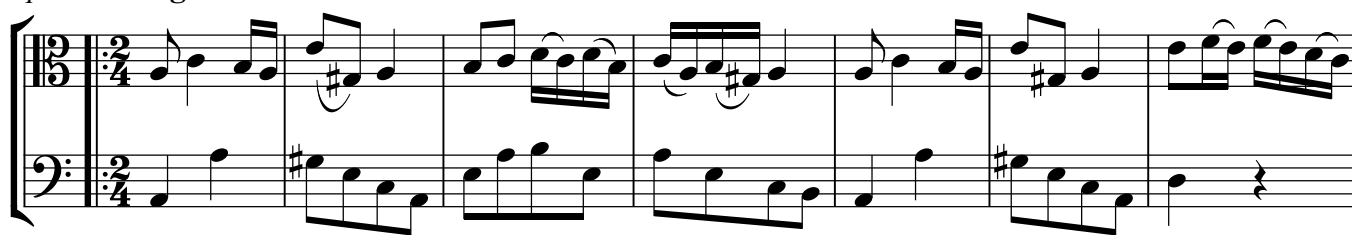
25

3

30

tr

1 Allegro



50

System 1 (Measures 50-56): Treble and Bass staves. Treble clef, key signature of one sharp (F#), 12/8 time signature. Measure 50: Treble has quarter notes G4, A4, B4, C5; Bass has quarter notes F#3, G3, A3, B3. Measure 51: Treble has quarter notes B4, A4, G4, F#4; Bass has quarter notes A3, B3, C4, D4. Measure 52: Treble has quarter notes E4, D4, C4, B3; Bass has quarter notes E3, F#3, G3, A3. Measure 53: Treble has eighth notes G4, A4, B4, C5, D5, E5, F#5, G5; Bass has quarter notes B2, C3, D3, E3. Measure 54: Treble has quarter notes F#5, E5, D5, C5; Bass has quarter notes F#3, G3, A3, B3. Measure 55: Treble has quarter notes B4, A4, G4, F#4; Bass has quarter notes D4, E4, F#4, G4. Measure 56: Treble has quarter notes E4, D4, C4, B3; Bass has quarter notes B2, C3, D3, E3. The system ends with a repeat sign.

57

System 2 (Measures 57-63): Treble and Bass staves. Treble clef, key signature of one sharp (F#), 12/8 time signature. Measure 57: Treble has quarter notes G4, A4, B4, C5; Bass has quarter notes F#3, G3, A3, B3. Measure 58: Treble has quarter notes B4, A4, G4, F#4; Bass has quarter notes A3, B3, C4, D4. Measure 59: Treble has quarter notes E4, D4, C4, B3; Bass has quarter notes E3, F#3, G3, A3. Measure 60: Treble has eighth notes G4, A4, B4, C5, D5, E5, F#5, G5; Bass has quarter notes B2, C3, D3, E3. Measure 61: Treble has quarter notes F#5, E5, D5, C5; Bass has quarter notes F#3, G3, A3, B3. Measure 62: Treble has quarter notes B4, A4, G4, F#4; Bass has quarter notes D4, E4, F#4, G4. Measure 63: Treble has quarter notes E4, D4, C4, B3; Bass has quarter notes B2, C3, D3, E3. The system ends with a repeat sign.

64

System 3 (Measures 64-69): Treble and Bass staves. Treble clef, key signature of one sharp (F#), 12/8 time signature. Measure 64: Treble has quarter notes G4, A4, B4, C5; Bass has quarter notes F#3, G3, A3, B3. Measure 65: Treble has quarter notes B4, A4, G4, F#4; Bass has quarter notes A3, B3, C4, D4. Measure 66: Treble has quarter notes E4, D4, C4, B3; Bass has quarter notes E3, F#3, G3, A3. Measure 67: Treble has eighth notes G4, A4, B4, C5, D5, E5, F#5, G5; Bass has quarter notes B2, C3, D3, E3. Measure 68: Treble has quarter notes F#5, E5, D5, C5; Bass has quarter notes F#3, G3, A3, B3. Measure 69: Treble has quarter notes B4, A4, G4, F#4; Bass has quarter notes D4, E4, F#4, G4. The system ends with a repeat sign.

70

System 4 (Measures 70-74): Treble and Bass staves. Treble clef, key signature of one sharp (F#), 12/8 time signature. Measure 70: Treble has quarter notes G4, A4, B4, C5; Bass has quarter notes F#3, G3, A3, B3. Measure 71: Treble has quarter notes B4, A4, G4, F#4; Bass has quarter notes A3, B3, C4, D4. Measure 72: Treble has quarter notes E4, D4, C4, B3; Bass has quarter notes E3, F#3, G3, A3. Measure 73: Treble has eighth notes G4, A4, B4, C5, D5, E5, F#5, G5; Bass has quarter notes B2, C3, D3, E3. Measure 74: Treble has quarter notes F#5, E5, D5, C5; Bass has quarter notes F#3, G3, A3, B3. The system ends with a repeat sign.

75

System 5 (Measures 75-79): Treble and Bass staves. Treble clef, key signature of one sharp (F#), 12/8 time signature. Measure 75: Treble has quarter notes G4, A4, B4, C5; Bass has quarter notes F#3, G3, A3, B3. Measure 76: Treble has quarter notes B4, A4, G4, F#4; Bass has quarter notes A3, B3, C4, D4. Measure 77: Treble has quarter notes E4, D4, C4, B3; Bass has quarter notes E3, F#3, G3, A3. Measure 78: Treble has eighth notes G4, A4, B4, C5, D5, E5, F#5, G5; Bass has quarter notes B2, C3, D3, E3. Measure 79: Treble has quarter notes F#5, E5, D5, C5; Bass has quarter notes F#3, G3, A3, B3. The system ends with a repeat sign.