

M. 18

M/

Concerto

pour le Cor, in Dis

compose

par

mit Engländer

2 Violin

1 Viola

1 Basso

2 Oboi

2 Corni,

W. A.

Mozart,

Oeuvre 105.

29



Corno Principale
in E.

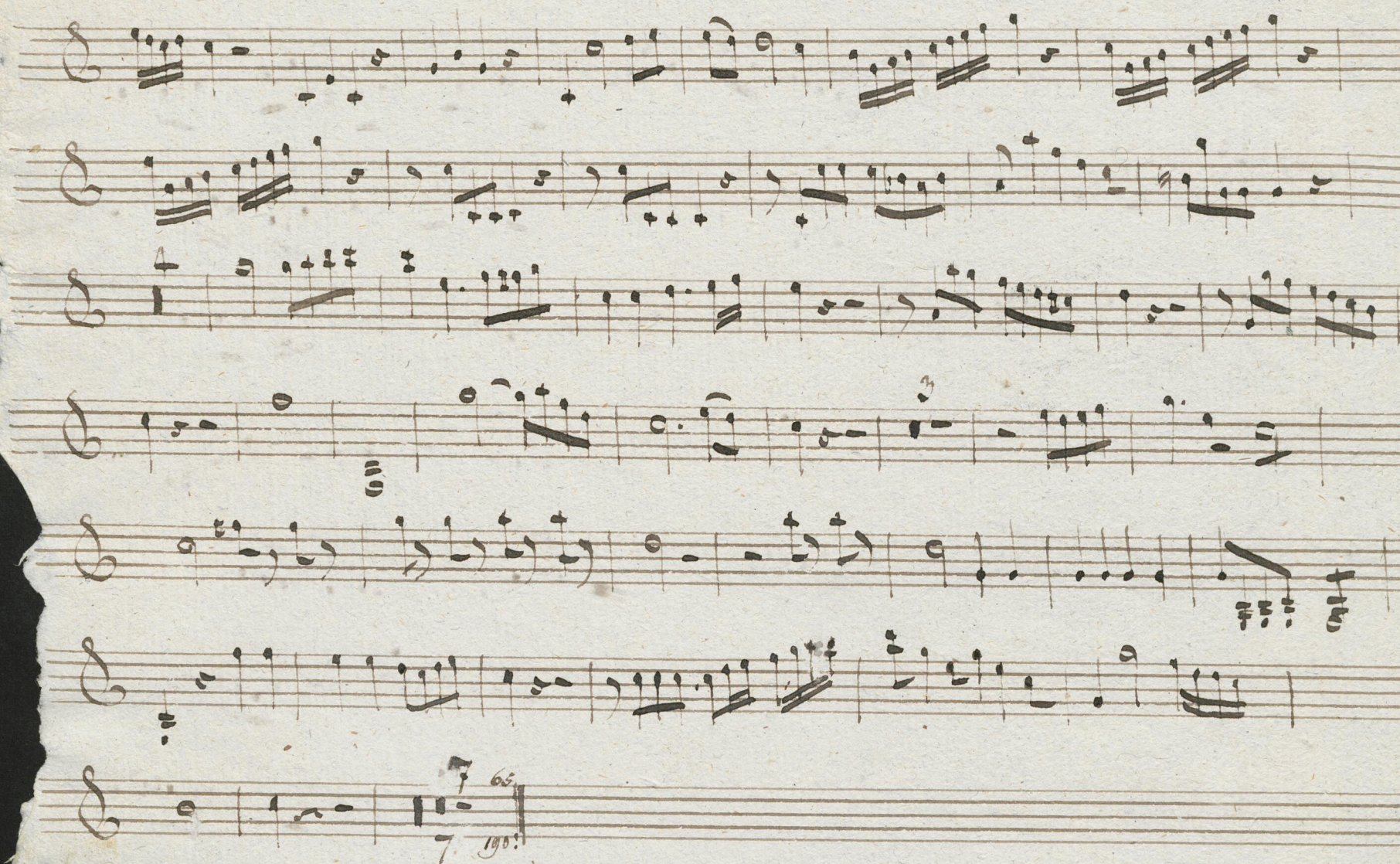
Allegro maestoso

Handwritten musical score for Corno Principale in E, featuring 12 staves of music. The tempo is marked "Allegro maestoso".

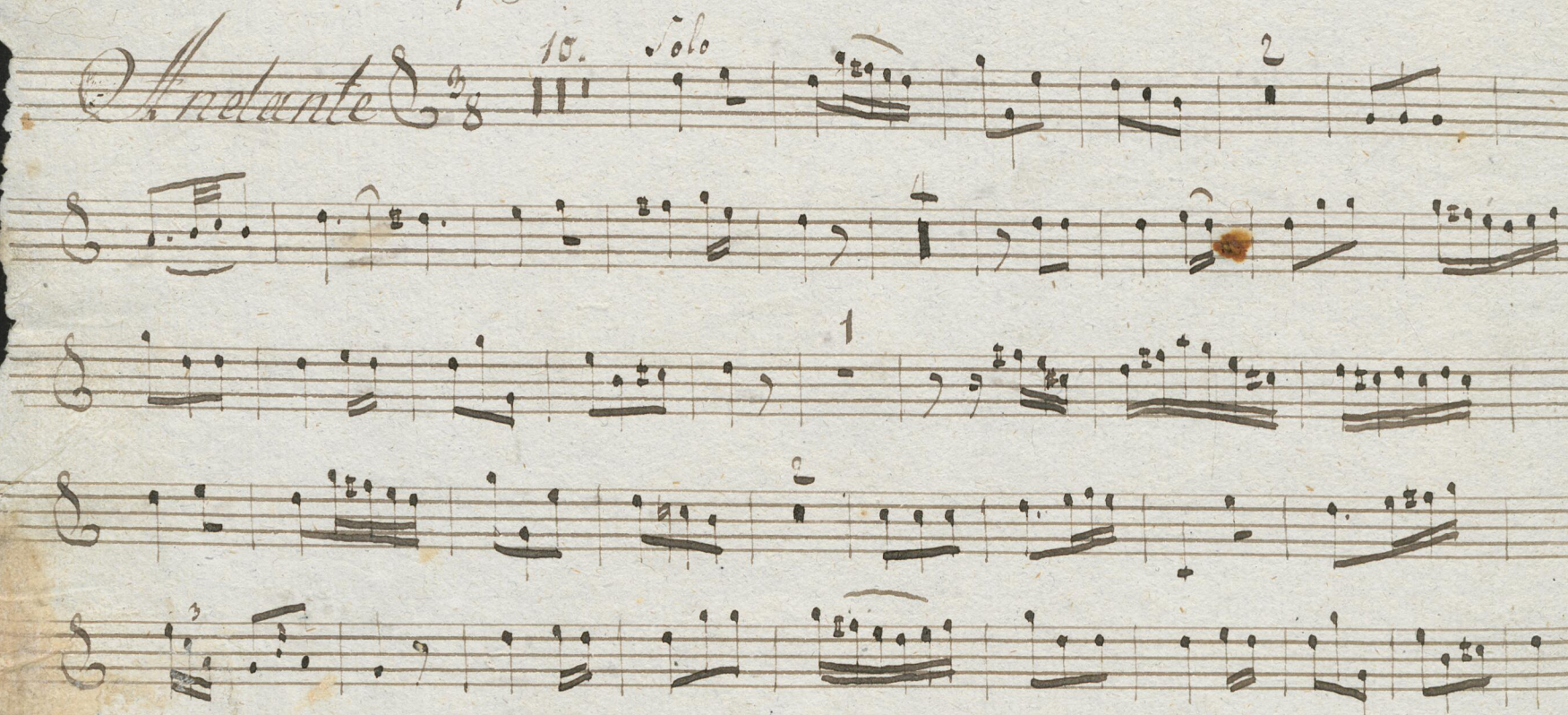
Measure 24 is marked "Solo".

Measure 31 is marked "Inting. 7 Solo".

Measure 38 is marked "8. Solo".

Corno Principale*Andante*

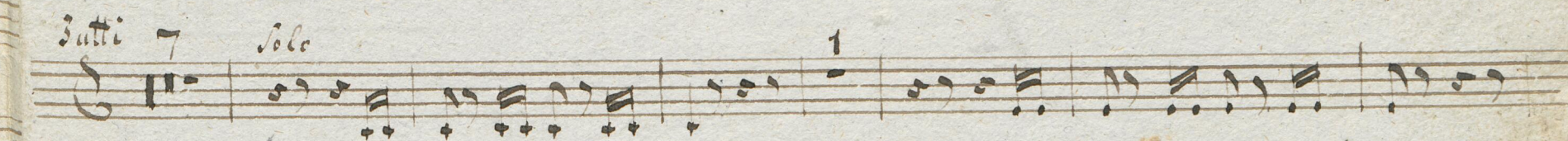
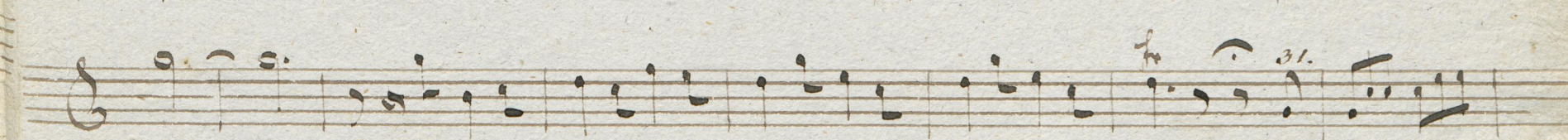
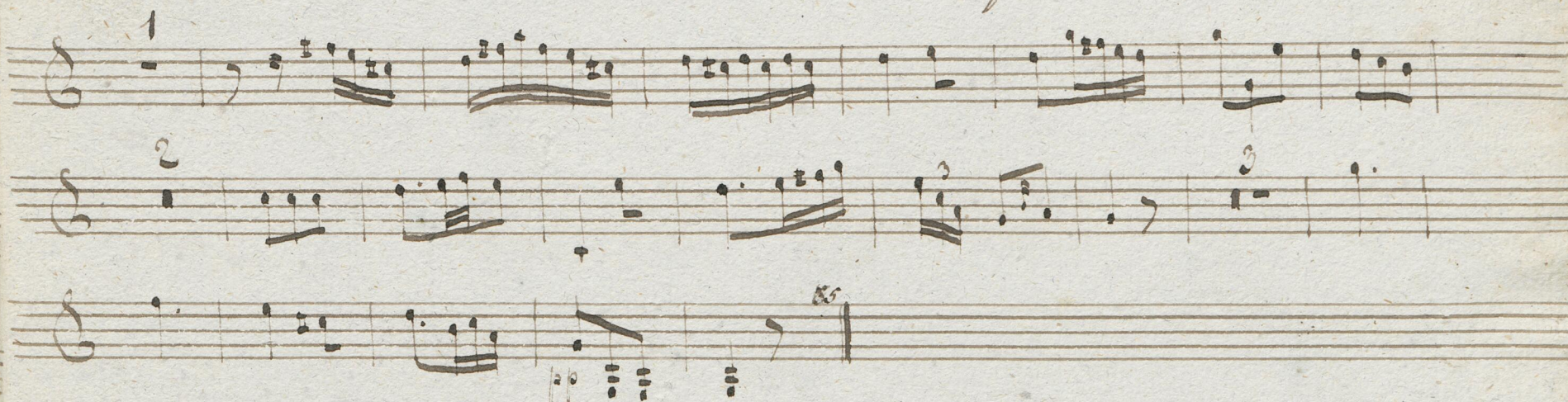
10. Solo



tutti

Cornu Principale

5

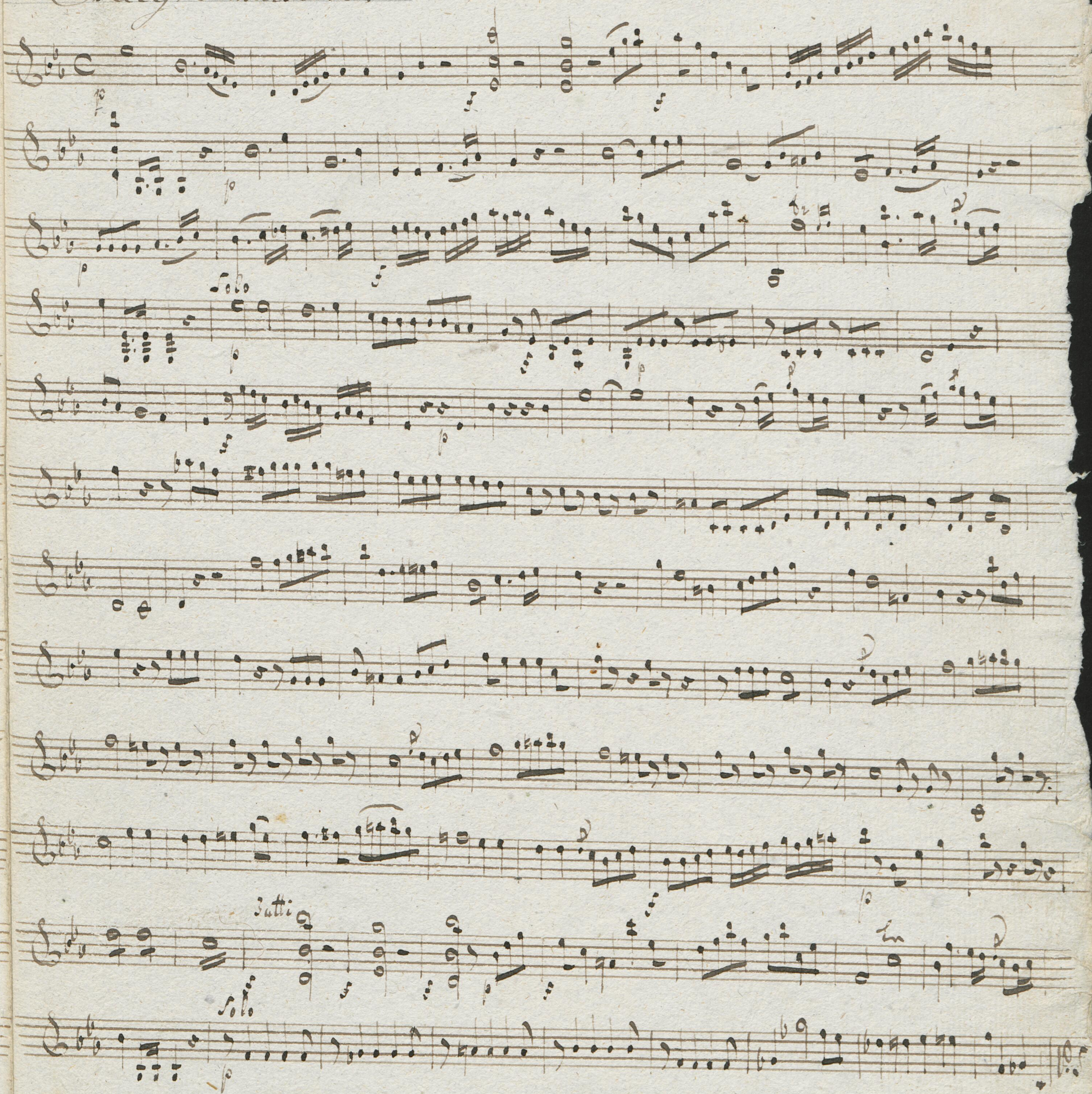


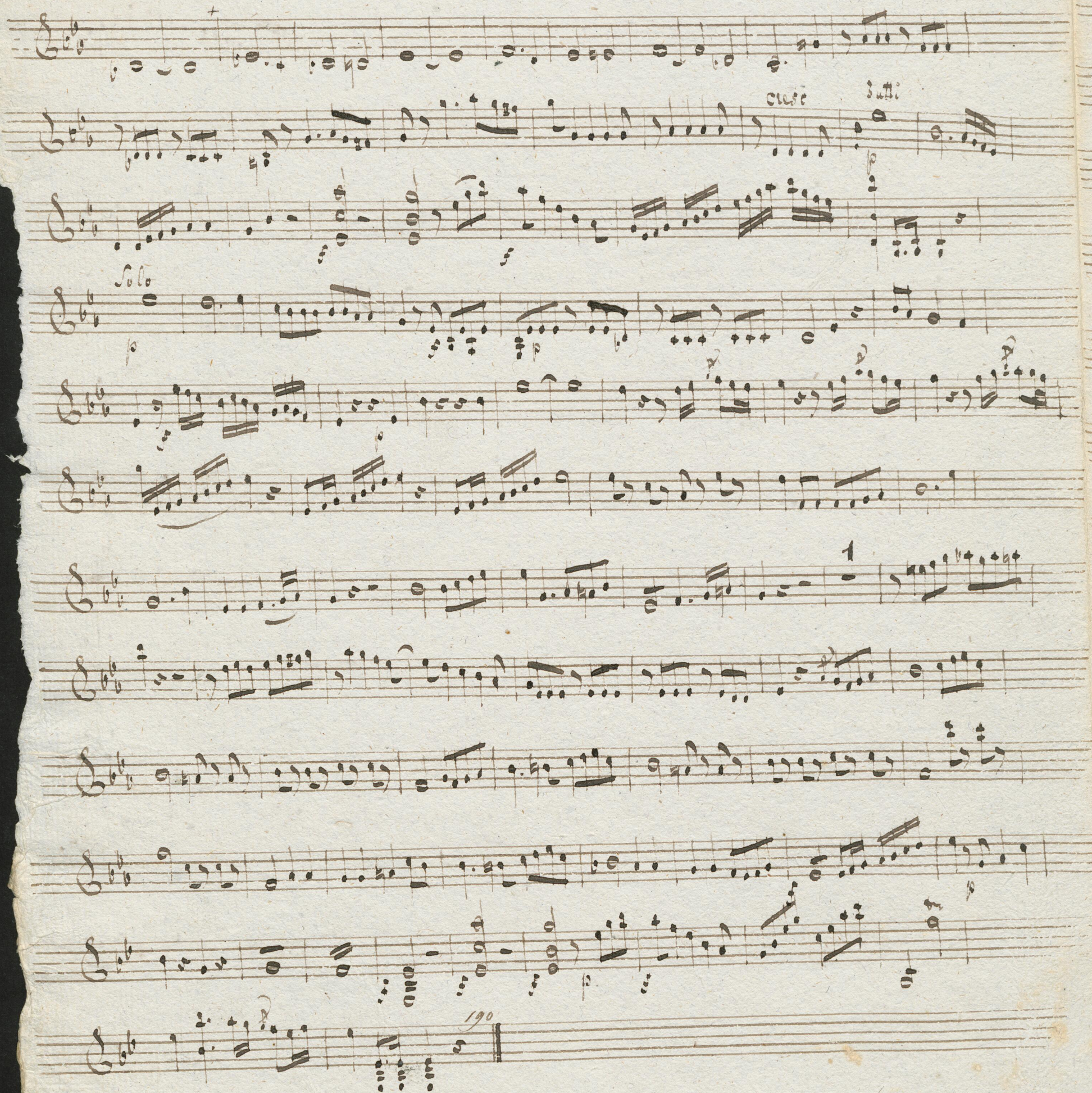
Cornu Principale

Handwritten musical score for *Cornu Principale*, page 6. The score is written on ten staves in G major (one sharp) and 2/4 time. The notation includes various musical symbols such as notes, rests, and dynamic markings. Key annotations include:

- Tutti 7 Solo* written above the fourth staff.
- Più Allegro* written above the eighth staff.
- Measure numbers *1*, *6*, *44*, and *49* are marked at the beginning of their respective staves.
- Dynamic markings *in* and *ro* are present on the seventh and ninth staves.

Allegro maestoso. Violino I^{mo}



Violino I^{mo}

Violino I^{mo}

9

Andante

Solo

Rondo

Stati

Fine Solo

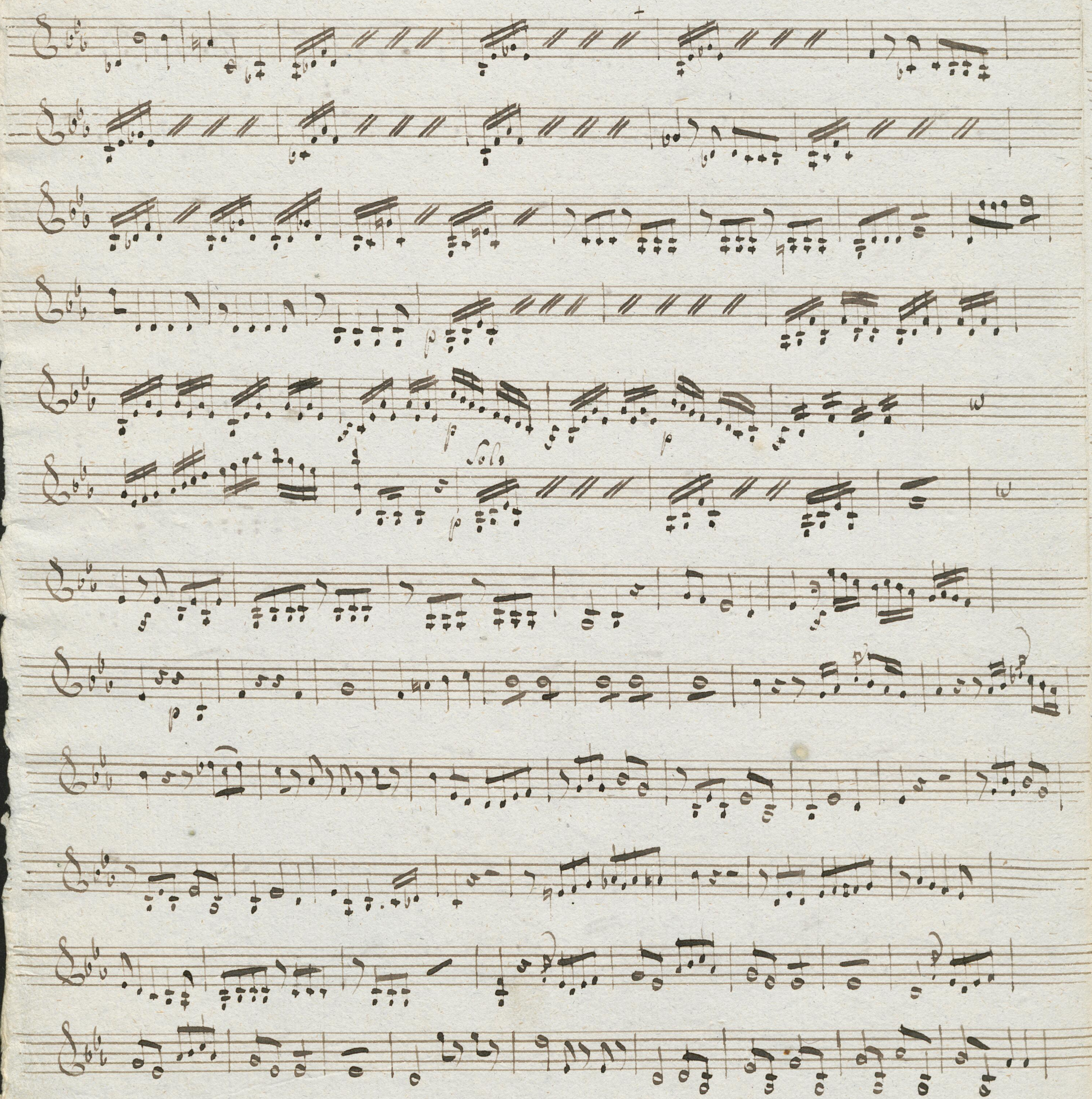
Violino I^{mo}

Handwritten musical score for Violino I, page 10. The score consists of 12 staves of music in G major, 2/4 time. It includes various musical notations such as notes, rests, and dynamic markings like *Solo*, *Tutti*, *pp*, *p*, *f*, and *Allegro*. The page is numbered 10 in the top left corner.

Violino II^{do}

Allegro moderato

Handwritten musical score for Violino II, Mozart op. 105, in G major, 2/4 time. The score is written on 14 staves. It begins with a treble clef, a key signature of one sharp (F#), and a common time signature (C). The tempo is marked 'Allegro moderato'. The notation includes various musical symbols such as notes, rests, beams, and dynamic markings like 'p' (piano), 'Solo', and 'Cresc'. The paper is aged and shows some staining and wear at the edges.

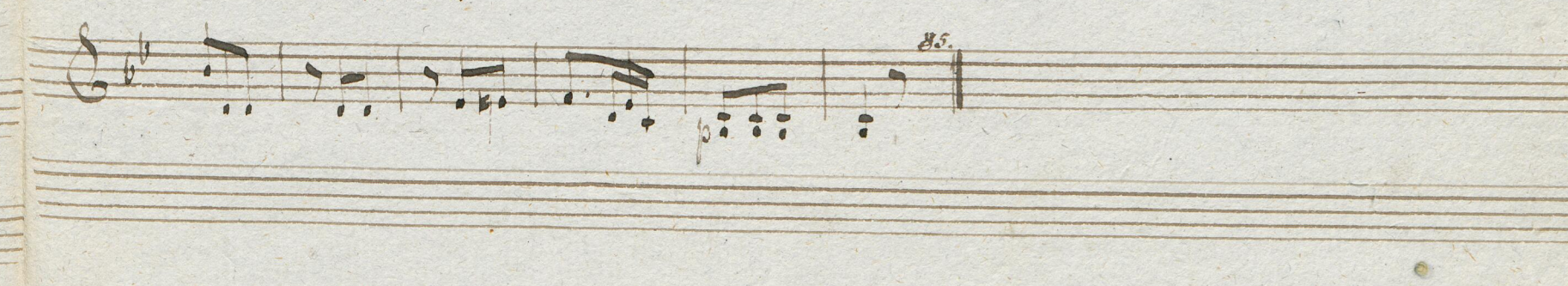
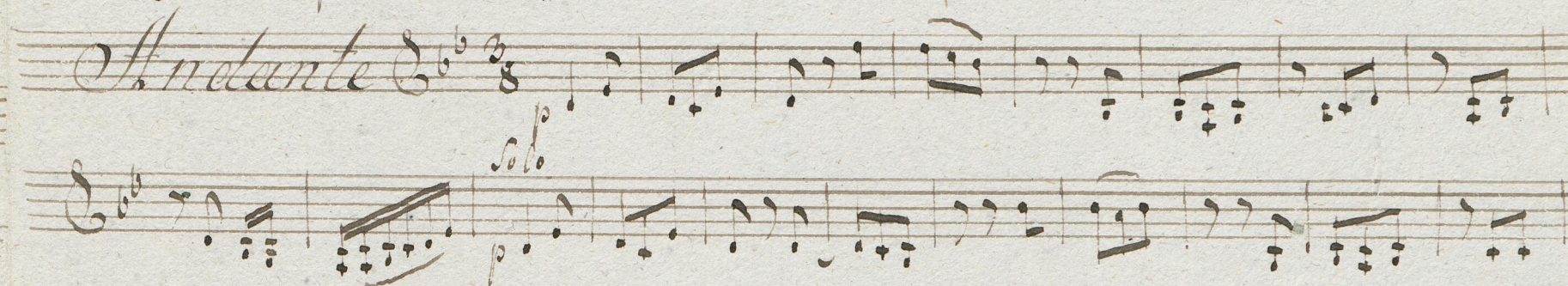
Violino II

Violino //

13



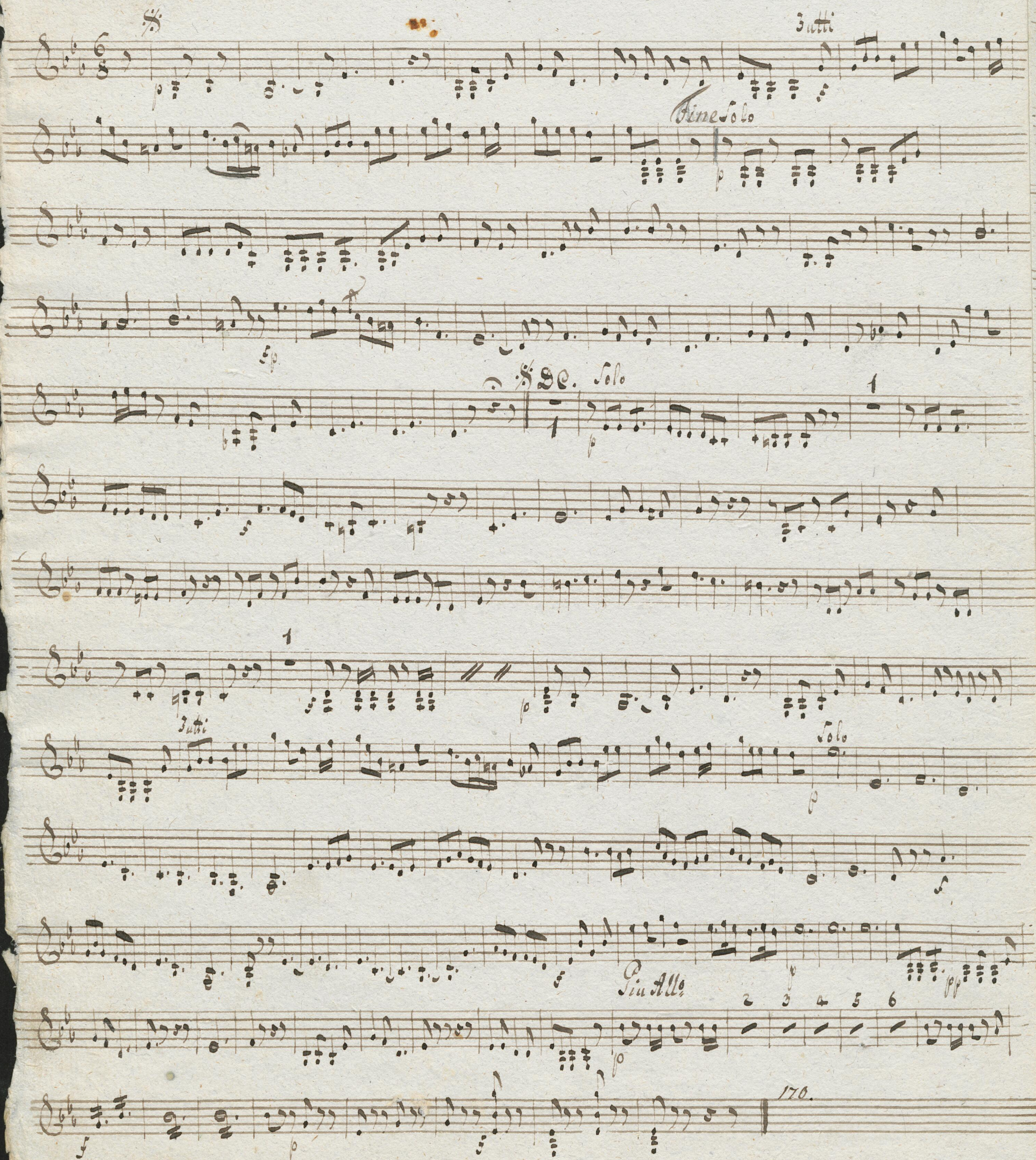
Andante



Ronelo

Violino II^o

Handwritten musical score for Violino II^o, titled "Ronelo". The score is written on 15 staves in 6/8 time, featuring various musical notations including notes, rests, and dynamic markings. The notation includes a key signature of one flat (B-flat) and a common time signature of 6/8. The score is divided into sections by dynamic markings and tempo changes. The first section is marked "3utti" and "Fine Solo". The second section is marked "Solo" and "1". The third section is marked "3utti" and "Solo". The fourth section is marked "Piu Allegro" and "2 3 4 5 6". The score concludes with a final measure marked "170.".

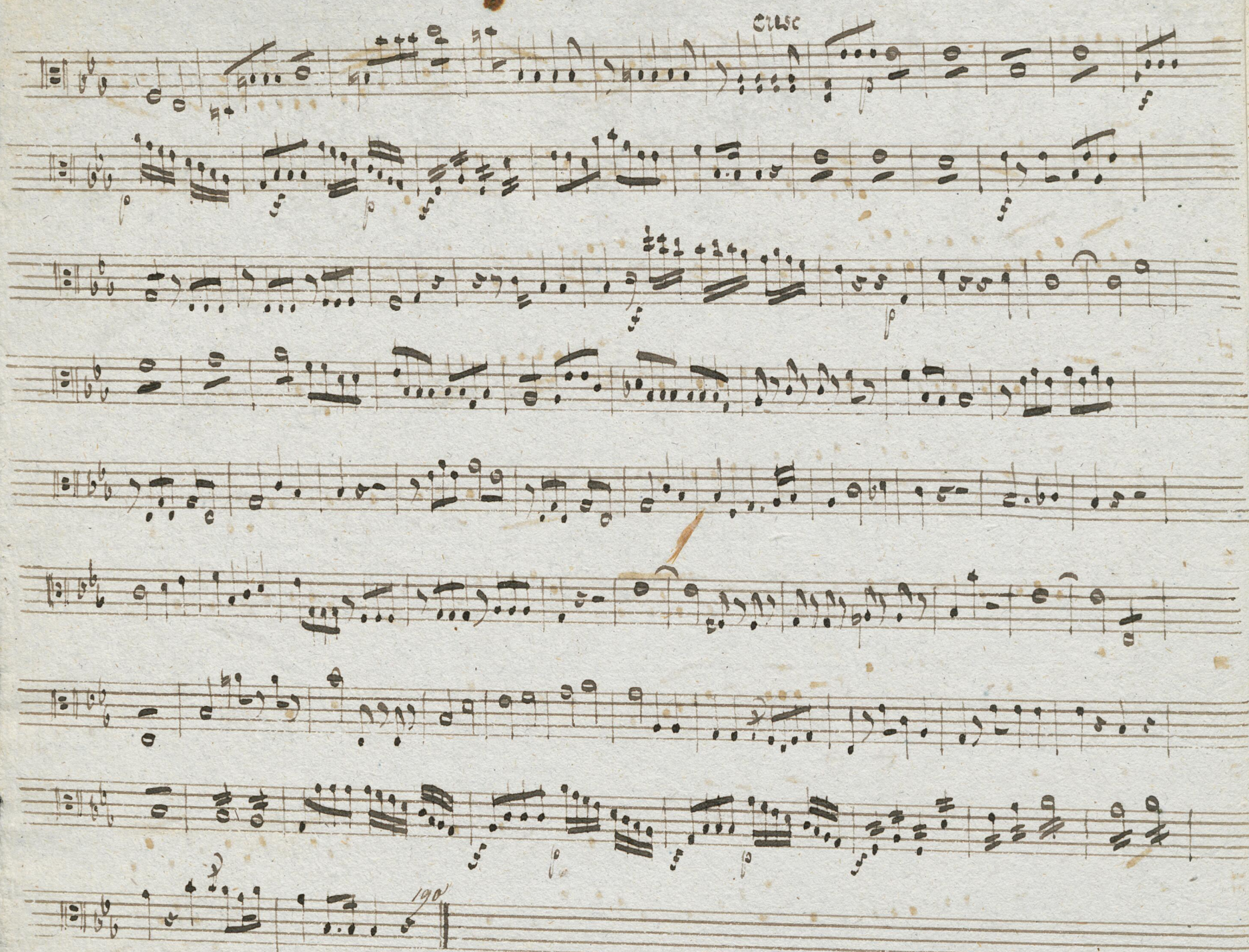


Viola.

Allegro maestoso

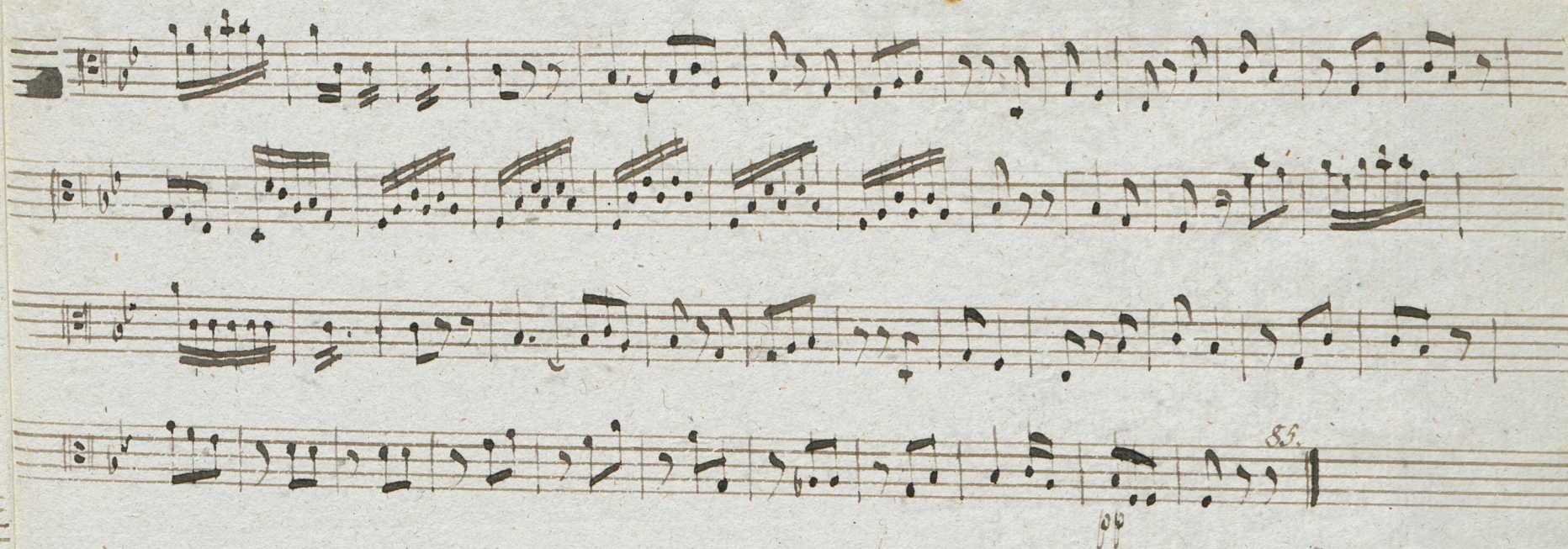
p *fp* *f* *p* *Solo* *Solo* *p* *f* *p* *f* *Tutti* *cresc. f* *p* *p* *p* *p Solo*

Viola

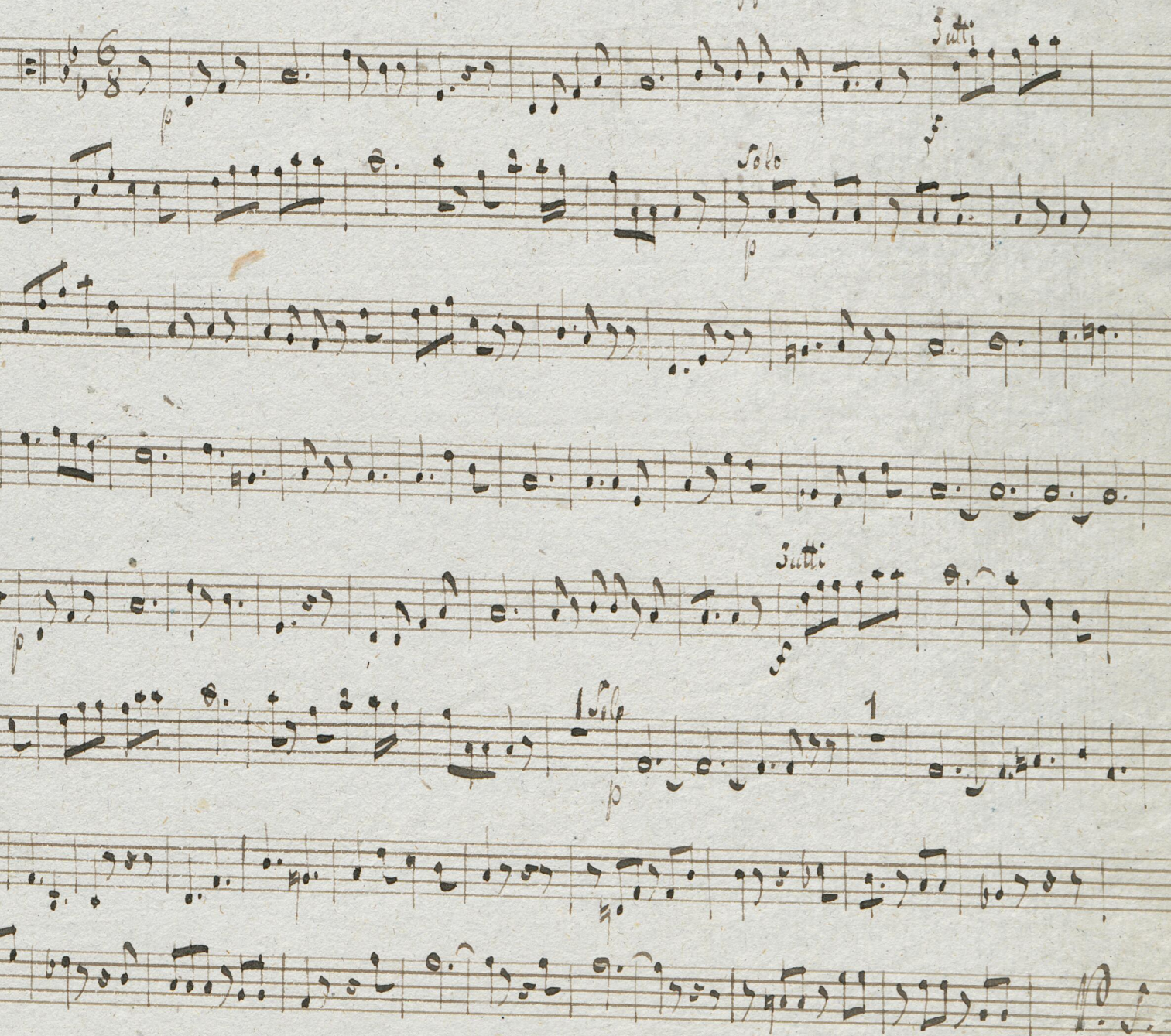
*Andante*

Viola

17



Rondo



Viola

Handwritten musical score for Viola, measures 111-120. The score is written on seven staves. The first staff begins with a measure rest marked '1'. The second staff has the word 'tutti' written above it. The sixth staff has the word 'Allegro' written above it. The seventh staff ends with a measure rest marked '1' and a final measure marked '120'. The notation includes various note values, rests, and dynamic markings such as 'p' (piano) and 'f' (forte).

Allegro maestoso

Basso

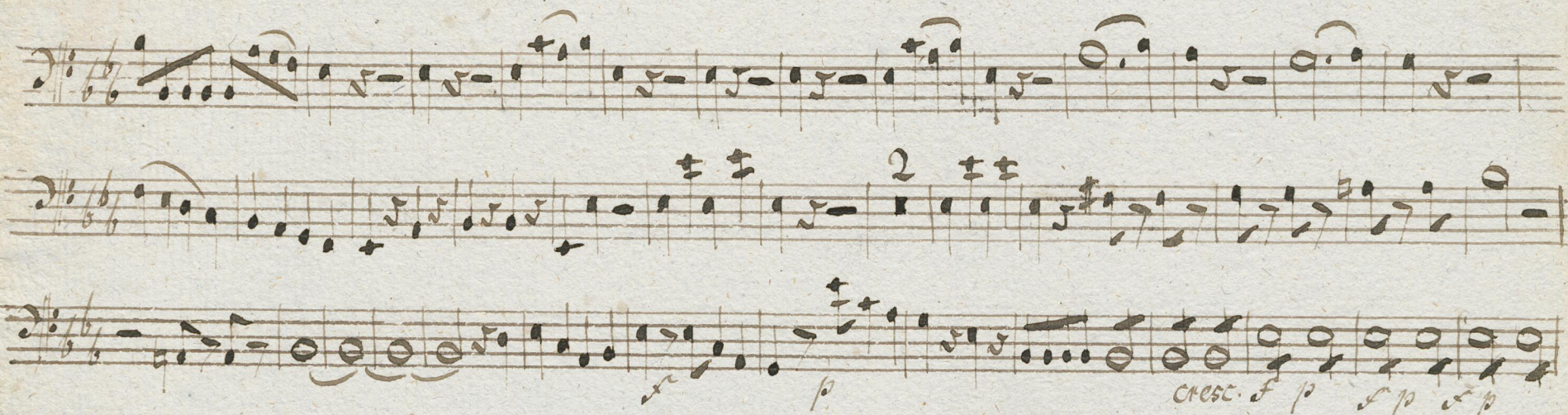
Handwritten musical score for Bass, Mozart Op. 105, page 19. The score is in 6/8 time, key of B-flat major. It features 12 staves of music with various dynamics and markings.

Key markings and dynamics include:

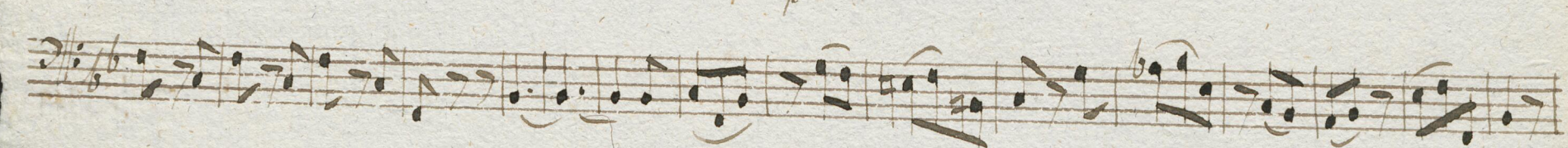
- pp* (pianissimo)
- sf* (sforzando)
- f* (forte)
- Solo*
- Tutti*
- cresc.* (crescendo)
- p* (piano)
- f* (forte)

The score includes a variety of musical notation, including eighth notes, sixteenth notes, and rests, with some staves featuring multiple beams and slurs.

Basso



Andante



Rondo

Basso

21

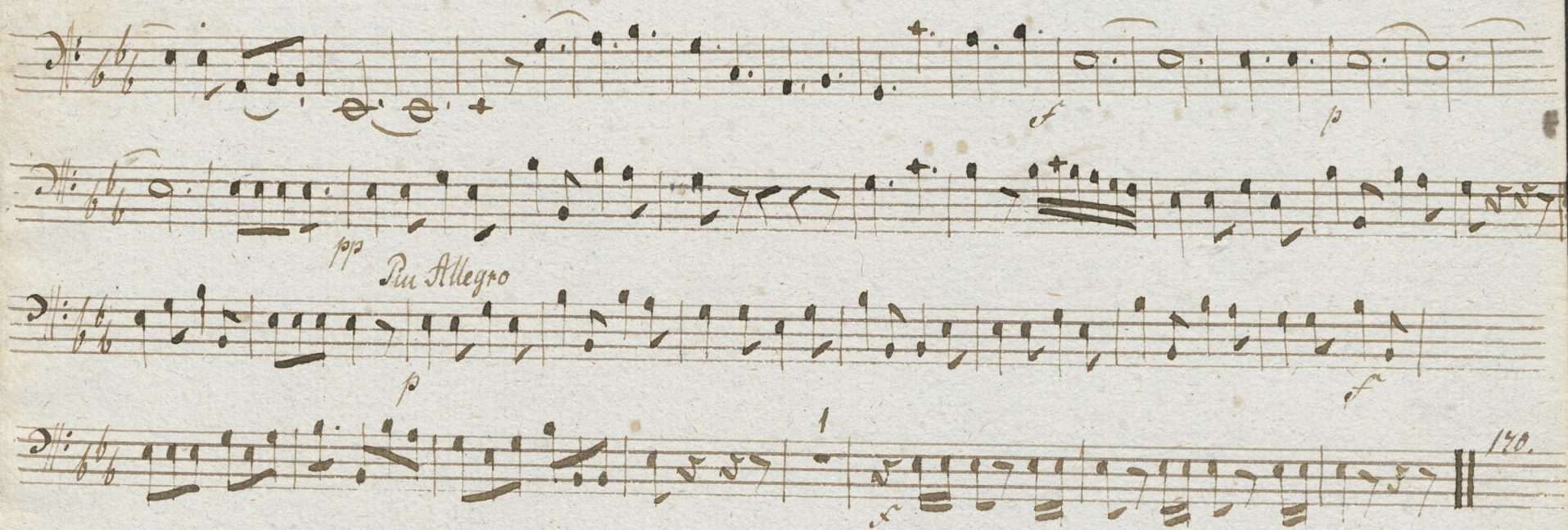
Handwritten musical score for Rondo Basso, page 21. The score consists of 12 staves of music in 6/8 time, featuring various musical notations including notes, rests, and dynamic markings.

Key markings and features include:

- Dynamic markings:** *p* (piano), *f* (forte), *sf* (sforzando), *pp* (pianissimo).
- Performance instructions:** *Tutti* (all), *Solo* (solo).
- Rehearsal marks:** Numbers 1 and 2 indicating specific points in the music.
- Time signature:** 6/8.
- Key signature:** Two flats (B-flat and E-flat).

The notation includes various note values (quarter, eighth, sixteenth notes), rests, and slurs. The handwriting is in a cursive style typical of 18th or 19th-century manuscripts.

Basso



Oboe I^{mo}

Allegro maestoso

Handwritten musical score for Oboe I, first movement, *Allegro maestoso*. The score consists of five staves. The first staff begins with a treble clef, a key signature of one flat (B-flat), and a common time signature (C). The music features various note values, rests, and dynamic markings such as 'p' (piano) and 'sp' (sforzando). Rehearsal marks with numbers 9, 1, 23, 29, and 24 are present. The second staff has a 'Solo' marking above it. The third staff has 'tutti' and 'p' markings. The fourth staff has 'Solo' and '24' markings. The fifth staff has 'Solo' and '27' markings. The piece concludes with a double bar line and a '170.' marking on the left margin.

Andante

Handwritten musical score for Oboe I, second movement, *Andante*. The score consists of seven staves. The first staff begins with a treble clef, a key signature of one flat (B-flat), and a 3/8 time signature. The music features various note values, rests, and dynamic markings such as 'p' (piano) and 'sp' (sforzando). Rehearsal marks with numbers 21, 25, 29, 34, and 7 are present. The second staff has 'tutti' and 'p' markings. The third staff has 'Solo' and '29' markings. The fourth staff has 'Solo' and '34' markings. The fifth staff has 'Solo' and '7' markings. The sixth staff has 'Piu Allegro' and '28' markings. The seventh staff has 'p' and '1' markings. The piece concludes with a double bar line and a '170.' marking on the left margin.

*M**G. C.**G.**G.**G.**G.**And**Ron**G.**G.**G.**G.**G.**G.*

Oboi II^{do}

Allegro maestoso

Handwritten musical notation for the first system, featuring five staves. The notation includes various musical symbols such as notes, rests, and dynamic markings like *pp* and *sol*. Measure numbers 1, 9, 23, and 29 are indicated above the staves.

Handwritten musical notation for the second system, featuring five staves. The notation includes various musical symbols such as notes, rests, and dynamic markings like *pp* and *sol*. Measure numbers 21, 54, and 88 are indicated above the staves.

Handwritten musical notation for the third system, featuring five staves. The notation includes various musical symbols such as notes, rests, and dynamic markings like *pp* and *sol*. Measure numbers 7 and 29 are indicated above the staves.

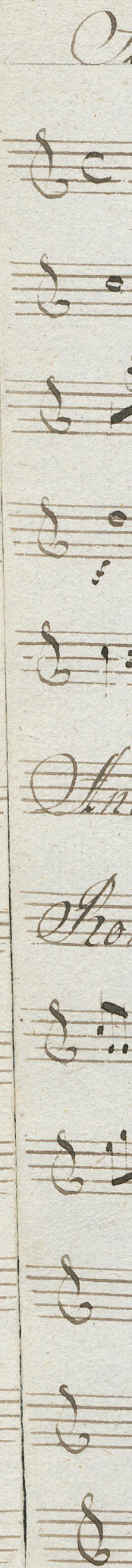
Handwritten musical notation for the fourth system, featuring five staves. The notation includes various musical symbols such as notes, rests, and dynamic markings like *pp* and *sol*. Measure numbers 29, 34, and 7 are indicated above the staves.

Handwritten musical notation for the fifth system, featuring five staves. The notation includes various musical symbols such as notes, rests, and dynamic markings like *pp* and *sol*. Measure numbers 34, 7, and 28 are indicated above the staves.

Handwritten musical notation for the sixth system, featuring five staves. The notation includes various musical symbols such as notes, rests, and dynamic markings like *pp* and *sol*. Measure numbers 7 and 28 are indicated above the staves.

Handwritten musical notation for the seventh system, featuring five staves. The notation includes various musical symbols such as notes, rests, and dynamic markings like *pp* and *sol*. Measure numbers 28, 170, and 1 are indicated above the staves.

Handwritten musical notation for the eighth system, featuring five staves. The notation includes various musical symbols such as notes, rests, and dynamic markings like *pp* and *sol*. Measure numbers 170 and 1 are indicated above the staves.



Allegro maestoso

Cornu I^{mo} in E.

Handwritten musical notation for the first system of the Cornu I^{mo} part. The notation is in treble clef and 2/4 time. It includes various musical symbols such as notes, rests, and dynamic markings like *sf* (sforzando) and *p* (piano). Measure numbers 3, 23, 29, and 15 are indicated above the staff.

Handwritten musical notation for the second system of the Cornu I^{mo} part. The notation is in treble clef and 2/4 time. It includes various musical symbols such as notes, rests, and dynamic markings like *p* (piano). Measure numbers 10, 22, 54, and 86 are indicated above the staff.

Handwritten musical notation for the third system of the Cornu I^{mo} part. The notation is in treble clef and 2/4 time. It includes various musical symbols such as notes, rests, and dynamic markings like *sf* (sforzando) and *p* (piano). Measure numbers 7, 29, 32, 7, 32, 7, 29, and 140 are indicated above the staff.

O

C

C

C

C

C

H

P

C

C

C

C

Allegro maestoso

Cornu II^{do} in E

Handwritten musical score for Cornu II^{do} in E, featuring measures 1 through 24. The tempo is *Allegro maestoso*. The notation includes various musical symbols such as notes, rests, and dynamic markings like *pp* and *fp*. Measure numbers 1, 3, 2, 29, 24, 15, 10, and 19 are indicated above the staff.

Handwritten musical score for Cornu II^{do} in E, featuring measures 22 through 34. The tempo is *Andante*. The notation includes various musical symbols such as notes, rests, and dynamic markings like *p*. Measure numbers 22, 34, and 36 are indicated above the staff.

Handwritten musical score for Cornu II^{do} in E, featuring measures 37 through 49. The tempo is *Rondo*. The notation includes various musical symbols such as notes, rests, and dynamic markings like *pp*. Measure numbers 7, 29, and 32 are indicated above the staff.

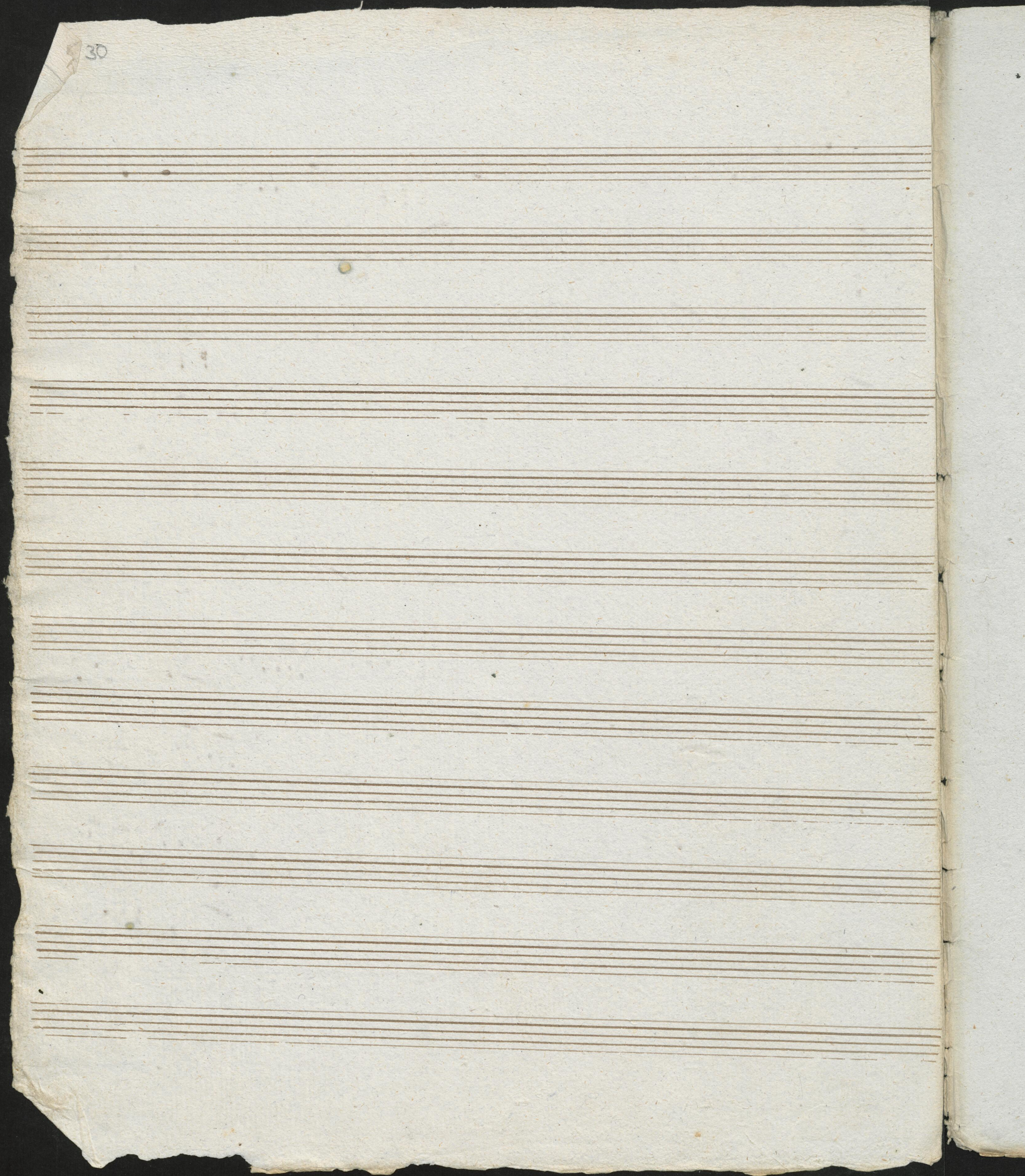
Handwritten musical score for Cornu II^{do} in E, featuring measures 52 through 64. The tempo is *Rondo*. The notation includes various musical symbols such as notes, rests, and dynamic markings like *pp*. Measure numbers 7, 29, and 32 are indicated above the staff.

Handwritten musical score for Cornu II^{do} in E, featuring measures 67 through 79. The tempo is *Rondo*. The notation includes various musical symbols such as notes, rests, and dynamic markings like *pp*. Measure numbers 7, 29, and 32 are indicated above the staff.

Handwritten musical score for Cornu II^{do} in E, featuring measures 82 through 94. The tempo is *Rondo*. The notation includes various musical symbols such as notes, rests, and dynamic markings like *pp*. Measure numbers 7, 29, and 32 are indicated above the staff.

Handwritten musical score for Cornu II^{do} in E, featuring measures 97 through 109. The tempo is *Rondo*. The notation includes various musical symbols such as notes, rests, and dynamic markings like *pp*. Measure numbers 7, 29, and 32 are indicated above the staff.

Handwritten musical score for Cornu II^{do} in E, featuring measures 112 through 124. The tempo is *Rondo*. The notation includes various musical symbols such as notes, rests, and dynamic markings like *pp*. Measure numbers 7, 29, and 32 are indicated above the staff.



Allegro maestoso

Cornu II^{do}

Meyer op. 105.

29

Handwritten musical notation for the first system, featuring a treble clef and a common time signature (C). The notation includes various notes, rests, and dynamic markings such as *p*, *sp*, and *ff*. Measure numbers 15, 18, 22, and 24 are visible.

Handwritten musical notation for the second system, featuring a treble clef and a 3/8 time signature. The notation includes various notes, rests, and dynamic markings such as *p*, *ff*, and *sol*. Measure numbers 7, 10, 12, 14, 16, 18, 20, 22, 24, 26, 28, 30, 32, 34, 36, 38, 40, 42, 44, 46, 48, 50, 52, 54, 56, 58, 60, 62, 64, 66, 68, 70, 72, 74, 76, 78, 80, 82, 84, 86, 88, 90, 92, 94, 96, 98, 100, 102, 104, 106, 108, 110, 112, 114, 116, 118, 120, 122, 124, 126, 128, 130, 132, 134, 136, 138, 140, 142, 144, 146, 148, 150, 152, 154, 156, 158, 160, 162, 164, 166, 168, 170, 172, 174, 176, 178, 180, 182, 184, 186, 188, 190, 192, 194, 196, 198, 200, 202, 204, 206, 208, 210, 212, 214, 216, 218, 220, 222, 224, 226, 228, 230, 232, 234, 236, 238, 240, 242, 244, 246, 248, 250, 252, 254, 256, 258, 260, 262, 264, 266, 268, 270, 272, 274, 276, 278, 280, 282, 284, 286, 288, 290, 292, 294, 296, 298, 300, 302, 304, 306, 308, 310, 312, 314, 316, 318, 320, 322, 324, 326, 328, 330, 332, 334, 336, 338, 340, 342, 344, 346, 348, 350, 352, 354, 356, 358, 360, 362, 364, 366, 368, 370, 372, 374, 376, 378, 380, 382, 384, 386, 388, 390, 392, 394, 396, 398, 400, 402, 404, 406, 408, 410, 412, 414, 416, 418, 420, 422, 424, 426, 428, 430, 432, 434, 436, 438, 440, 442, 444, 446, 448, 450, 452, 454, 456, 458, 460, 462, 464, 466, 468, 470, 472, 474, 476, 478, 480, 482, 484, 486, 488, 490, 492, 494, 496, 498, 500, 502, 504, 506, 508, 510, 512, 514, 516, 518, 520, 522, 524, 526, 528, 530, 532, 534, 536, 538, 540, 542, 544, 546, 548, 550, 552, 554, 556, 558, 560, 562, 564, 566, 568, 570, 572, 574, 576, 578, 580, 582, 584, 586, 588, 590, 592, 594, 596, 598, 600, 602, 604, 606, 608, 610, 612, 614, 616, 618, 620, 622, 624, 626, 628, 630, 632, 634, 636, 638, 640, 642, 644, 646, 648, 650, 652, 654, 656, 658, 660, 662, 664, 666, 668, 670, 672, 674, 676, 678, 680, 682, 684, 686, 688, 690, 692, 694, 696, 698, 700, 702, 704, 706, 708, 710, 712, 714, 716, 718, 720, 722, 724, 726, 728, 730, 732, 734, 736, 738, 740, 742, 744, 746, 748, 750, 752, 754, 756, 758, 760, 762, 764, 766, 768, 770, 772, 774, 776, 778, 780, 782, 784, 786, 788, 790, 792, 794, 796, 798, 800, 802, 804, 806, 808, 810, 812, 814, 816, 818, 820, 822, 824, 826, 828, 830, 832, 834, 836, 838, 840, 842, 844, 846, 848, 850, 852, 854, 856, 858, 860, 862, 864, 866, 868, 870, 872, 874, 876, 878, 880, 882, 884, 886, 888, 890, 892, 894, 896, 898, 900, 902, 904, 906, 908, 910, 912, 914, 916, 918, 920, 922, 924, 926, 928, 930, 932, 934, 936, 938, 940, 942, 944, 946, 948, 950, 952, 954, 956, 958, 960, 962, 964, 966, 968, 970, 972, 974, 976, 978, 980, 982, 984, 986, 988, 990, 992, 994, 996, 998, 1000.

