

POPULAR EDITION

SHE'S ALWAYS SINGING THE BLUES

THOSE BLUEY BLUES

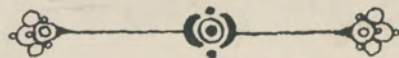


Successfully Introduced

By

AL BERNARD
(THE BOY FROM DIXIE)

ON AMERICA'S
LEADING PHONOGRAPHS

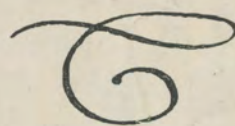


LYRICS BY

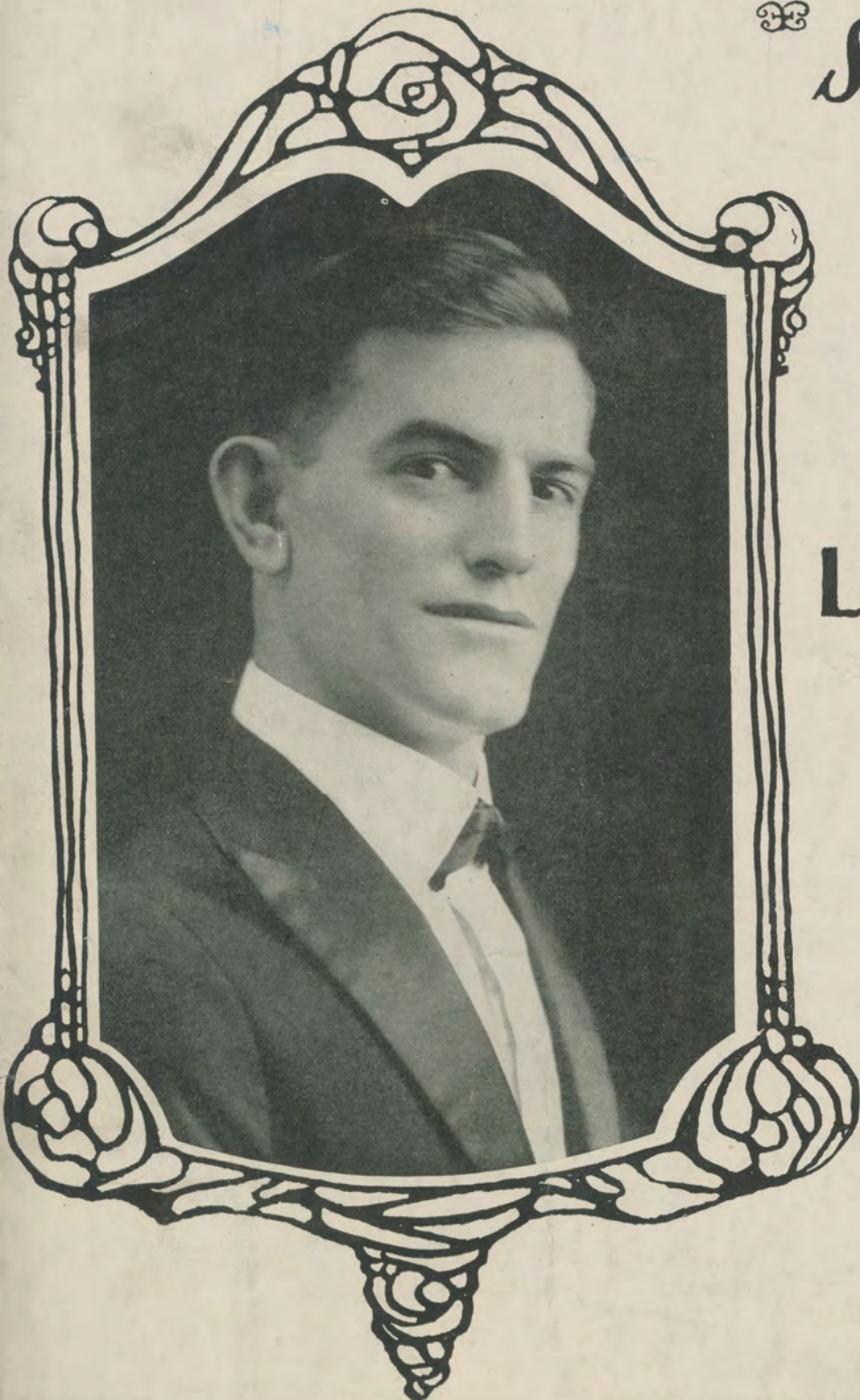
AL BERNARD

MUSIC BY

GEORGE FAIRMAN



REG. U. S. PAT. OFF.



She's Always Singin' The Blues

(Those Blue-y Blues)

Words by
AL. BERNARD

Writer of "Read 'Em And Weep"
Moderato

Song

Music by
GEORGE FAIRMAN
Writer of "Bo-La-Bo"

Piano

f

Detailed description: This block contains the piano introduction. It features a grand staff with treble and bass clefs. The music is in 4/4 time and begins with a forte (*f*) dynamic. The melody is primarily in the treble clef, while the bass clef provides a steady accompaniment. The tempo is marked as Moderato.

sfz *mf* *sfz*

Detailed description: This block shows the piano accompaniment for the first vocal line. It continues the grand staff notation. Dynamics include *sfz* (sforzando), *mf* (mezzo-forte), and another *sfz*. The tempo remains Moderato.

There lives next door to me, A girl they call Mar - ie;
Those blues have sure got me, And I will tell to thee;

p

Detailed description: This block contains the first two lines of the song. The vocal line is on a single staff, and the piano accompaniment is on a grand staff. The lyrics are written below the vocal line. Dynamics include *p* (piano). The tempo is Moderato.

She's so lone - some, Yes just as lone - some as she can be; -
She's won my heart, She'll soon be hap - py you wait and see; -

v

Detailed description: This block contains the next two lines of the song. The vocal line is on a single staff, and the piano accompaniment is on a grand staff. Dynamics include *v* (crescendo). The tempo is Moderato.

She al - ways stays at home She loves to be a - lone;
And when I make her mine She nev - er more will pine;

Detailed description: This block contains the final two lines of the song. The vocal line is on a single staff, and the piano accompaniment is on a grand staff. The tempo is Moderato.

I will ad-mit that she's a won-der-ful child, Still she al-most drives me wild:
I will ad-mit that she's had sweet-ies be-fore, Still with me she'll try once more:

Refrain

For she's al-ways sing - in' the blues, Some-times she sighs, and then she cries;

And when the tears come streaming down her cheeks, Re-minds me of a wa-ter pipe that leaks; This

world to her - is no joke, For her the sun don't shine; - She must of had a lot of trou-ble.

right from the start, - It seems to me that some - one must of bro - ken her heart; - For she's

al-ways sing - in' the blues, Those blue-y blues. For she's blues.

TRI A TRIANGLE TUNE

AL. BERNARD'S GREAT SONG SUCCESS

READ 'EM AND WEEP

Chorus Words by Al. Bernard. Music by Walter Haenschen. 3

Read 'em and weep (Huh!) Look at that sev - en Read 'em and weep (Huh!)

Look at that 'lev - en Phras now - bines don't you bes - i - late - come - on sweet ace make six your nite. And

let these men folks read 'em while - they can ^{Spoken} (Come on to Pe-pe) (Come on for Niema) Read 'em and

weep (Huh!) Look at that sev - en Read 'em and weep (Huh!) Look at that 'lev - en

Copyright MCMXX by Triangle Music Pub. Co., 145 W. 45th St., N.Y.C.
International Copyright Secured TRI A TRIANGLE TUNE All Rights Reserved

Complete Copies on sale Wherever Music is Sold!
HEAR IT ON YOUR FAVORITE MUSIC ROLL OR
PHONOGRAPH RECORD

