

Piano 1

String Quartet

arranged for two pianos four hands

J. Hummel, Op.30 No. 3

Allegro con spirito

Piano 1

Piano 2

ff

p

sf

pp

sf

p

tr

String Quartet - 2

27

Measures 27-32 of the musical score. The key signature is three flats (B-flat, E-flat, A-flat). The music is written for a string quartet in two staves. Measure 27 has a whole rest in the treble and a quarter note in the bass. Measures 28-30 have whole rests in both staves. Measure 31 has a half note in the treble and a half note in the bass. Measure 32 has a half note in the treble and a half note in the bass.

33

Measures 33-37 of the musical score. Measure 33 starts with a forte (*f*) dynamic. Measures 34-35 have a piano (*p*) dynamic. Measure 36 has a mezzo-forte (*mf*) dynamic. Measure 37 has a mezzo-forte (*mf*) dynamic. The music features various melodic lines and rests.

38

Measures 38-42 of the musical score. Measure 38 has a piano (*p*) dynamic. Measures 39-40 have a piano (*p*) dynamic. Measure 41 has a piano (*p*) dynamic. Measure 42 has a piano (*p*) dynamic. The music continues with melodic development.

43

Measures 43-46 of the musical score. Measures 43-44 have a piano (*p*) dynamic. Measure 45 has a piano (*p*) dynamic. Measure 46 has a piano (*p*) dynamic. The music features a mix of melodic and harmonic textures.

47

Measures 47-51 of the musical score. Measure 47 has a piano (*p*) dynamic. Measure 48 has a piano (*p*) dynamic. Measure 49 has a piano (*p*) dynamic. Measure 50 has a piano (*p*) dynamic. Measure 51 has a piano (*p*) dynamic. The music continues with melodic development.

52

Measures 52-56 of the musical score. Measure 52 has a piano (*p*) dynamic. Measure 53 has a piano (*p*) dynamic. Measure 54 has a piano (*p*) dynamic. Measure 55 has a piano (*p*) dynamic. Measure 56 has a piano (*p*) dynamic. The music concludes with a final melodic phrase.

String Quartet - 3

56

61

64

67

70

73

String Quartet - 4

76

Measures 76-78. Treble staff: 76 (triplet eighth notes, eighth notes, quarter notes), 77 (quarter notes, eighth notes, quarter notes), 78 (quarter notes, eighth notes, quarter notes). Bass staff: 76 (triplet eighth notes, eighth notes, quarter notes), 77 (quarter notes, eighth notes, quarter notes), 78 (quarter notes, eighth notes, quarter notes).

79

Measures 79-81. Treble staff: 79 (triplet eighth notes, eighth notes, quarter notes), 80 (quarter notes, eighth notes, quarter notes), 81 (quarter notes, eighth notes, quarter notes). Bass staff: 79 (triplet eighth notes, eighth notes, quarter notes), 80 (quarter notes, eighth notes, quarter notes), 81 (quarter notes, eighth notes, quarter notes).

82

Measures 82-84. Treble staff: 82 (triplet eighth notes, eighth notes, quarter notes), 83 (quarter notes, eighth notes, quarter notes), 84 (quarter notes, eighth notes, quarter notes). Bass staff: 82 (triplet eighth notes, eighth notes, quarter notes), 83 (quarter notes, eighth notes, quarter notes), 84 (quarter notes, eighth notes, quarter notes).

85

Measures 85-88. Treble staff: 85 (triplet eighth notes, eighth notes, quarter notes), 86 (quarter notes, eighth notes, quarter notes), 87 (quarter notes, eighth notes, quarter notes), 88 (quarter notes, eighth notes, quarter notes). Bass staff: 85 (triplet eighth notes, eighth notes, quarter notes), 86 (quarter notes, eighth notes, quarter notes), 87 (quarter notes, eighth notes, quarter notes), 88 (quarter notes, eighth notes, quarter notes). Dynamics: *f* at measure 85, *p* at measure 88.

89

Measures 89-92. Treble staff: 89 (quarter notes, eighth notes, quarter notes), 90 (quarter notes, eighth notes, quarter notes), 91 (quarter notes, eighth notes, quarter notes), 92 (quarter notes, eighth notes, quarter notes). Bass staff: 89 (triplet eighth notes, eighth notes, quarter notes), 90 (quarter notes, eighth notes, quarter notes), 91 (quarter notes, eighth notes, quarter notes), 92 (quarter notes, eighth notes, quarter notes).

93

Measures 93-96. Treble staff: 93 (quarter notes, eighth notes, quarter notes), 94 (quarter notes, eighth notes, quarter notes), 95 (quarter notes, eighth notes, quarter notes), 96 (quarter notes, eighth notes, quarter notes). Bass staff: 93 (triplet eighth notes, eighth notes, quarter notes), 94 (quarter notes, eighth notes, quarter notes), 95 (quarter notes, eighth notes, quarter notes), 96 (quarter notes, eighth notes, quarter notes).

String Quartet - 5

97

Measures 97-100 of a string quartet score. The key signature has three flats (B-flat, E-flat, A-flat). The music features intricate sixteenth-note patterns in the upper staves and sustained notes with slurs in the lower staves. The system concludes with a double bar line.

101

ff

Measures 101-104. Measure 101 begins with a forte (*ff*) dynamic. The upper staves contain sixteenth-note runs, while the lower staves have sustained notes. The system ends with a double bar line.

105

p

Measures 105-110. Measure 105 starts with a piano (*p*) dynamic. The upper staves are mostly rests, with melodic lines appearing in measures 106 and 107. The lower staves feature sustained notes with slurs. The system ends with a double bar line.

111

Measures 111-116. This system continues the melodic and harmonic development from the previous measures, with sustained notes and slurs in both staves. The system ends with a double bar line.

117

Measures 117-121. The upper staves show melodic lines with slurs, and the lower staves have sustained notes. The system ends with a double bar line.

122

sf *p*

Measures 122-125. Measure 122 begins with a sforzando (*sf*) dynamic, followed by a piano (*p*) dynamic in measure 123. The upper staves have melodic lines, and the lower staves have sustained notes. The system ends with a double bar line.

String Quartet - 6

126

130

135

139

143

147

String Quartet - 7

151

3 3 3 3

p

155

sf

161

sf

165

p

171

sf *p*

176

sf *p*

String Quartet - 8

181

Measures 181-185 of a string quartet score. The key signature has three flats (B-flat, E-flat, A-flat). Measure 181 has a whole rest in the treble and a half note in the bass. Measures 182-184 feature a melodic line in the treble with eighth and sixteenth notes, and a supporting line in the bass. Measure 185 ends with a trill in the treble and a whole rest in the bass.

186

Measures 186-190. Measures 186-188 show a continuous melodic line in the treble. Measure 189 has a forte (*sf*) dynamic marking in the bass. Measure 190 concludes with a half note in the treble and a whole note in the bass.

191

Measures 191-194. Measure 191 has a piano (*p*) dynamic in the bass. Measures 192-193 show a melodic line in the treble and a supporting line in the bass. Measure 194 has a forte (*sf*) dynamic in the bass.

195

Measures 195-199. Measure 195 has a piano (*p*) dynamic in the bass. Measures 196-199 continue the melodic development in the treble with eighth and sixteenth notes, supported by the bass.

200

Measures 200-204. Measures 200-201 show a melodic line in the treble with accents. Measure 202 has a forte (*sf*) dynamic in the bass. Measures 203-204 continue the melodic line in the treble.

205

Measures 205-209. Measures 205-209 continue the melodic line in the treble with eighth and sixteenth notes, supported by the bass.

String Quartet - 9

210

214

219

222

225

229

String Quartet - 10

232

235

238

241

244

calando

a tempo

p

248

String Quartet - 11

251

255

259

263

267

270

String Quartet - 12

Andante

Measures 1-6 of the piece. The music is in 2/4 time and E-flat major. The first system shows the beginning of the piece with a piano (*p*) dynamic in the bass and a fortissimo (*sf*) dynamic in the treble.

Measures 7-13 of the piece. The music continues with a piano (*pp*) dynamic in the bass and a piano (*p*) dynamic in the treble. The system ends with a repeat sign.

Measures 14-20 of the piece. The music continues with a piano (*p*) dynamic in the bass and a piano (*p*) dynamic in the treble. The system ends with a repeat sign.

Measures 21-25 of the piece. The music continues with a piano (*p*) dynamic in the bass and a fortissimo (*sf*) dynamic in the treble. The system ends with a repeat sign.

Measures 26-30 of the piece. The music continues with a piano (*pp*) dynamic in the bass and a fortissimo (*sf*) dynamic in the treble. The system ends with a repeat sign.

Measures 31-35 of the piece. The music continues with a piano (*p*) dynamic in the bass and a piano (*p*) dynamic in the treble. The system ends with a repeat sign.

String Quartet - 13

37

Measures 37-42 of the String Quartet. The score is in G major (one sharp) and 4/4 time. The first system shows measures 37-42. The treble clef part features a melodic line with eighth and sixteenth notes, while the bass clef part provides a harmonic accompaniment with eighth notes and rests.

43

Measures 43-46 of the String Quartet. The treble clef part continues the melodic development with slurs and ties. The bass clef part features a steady eighth-note accompaniment.

47

Measures 47-50 of the String Quartet. The treble clef part shows a melodic line with slurs. The bass clef part continues with eighth-note accompaniment. Measure 50 ends with a double bar line.

51

Measures 51-54 of the String Quartet. The treble clef part features a melodic line with slurs. The bass clef part continues with eighth-note accompaniment. Measure 54 ends with a double bar line.

55

Measures 55-58 of the String Quartet. The treble clef part features a melodic line with slurs. The bass clef part continues with eighth-note accompaniment. Measure 58 ends with a double bar line.

59

Measures 59-64 of the String Quartet. The treble clef part features a melodic line with slurs. The bass clef part continues with eighth-note accompaniment. Measure 64 ends with a double bar line.

String Quartet - 14

66

sf p

73

sf

dolce

80

p

sotto voce

87

sf

Piano 2

pp

93

sf

sf

97

rit.

a tempo

p

sf

sf

sf

String Quartet - 15

103 *rit.* *a tempo*

p *sf* *p*

107

f *p* *p* *p* *p*

112

p

119

p

124

f *ff* *p* *p*

128

p

String Quartet - 16

130

Measures 130-131. Treble clef: Sixteenth-note runs with slurs and fingerings (4, 3). Bass clef: Eighth-note accompaniment.

132

Measures 132-133. Treble clef: Sixteenth-note runs with slurs and fingerings (3, 3, 1). Bass clef: Eighth-note accompaniment with a quarter rest in measure 133.

134

Measures 134-135. Treble clef: Sixteenth-note runs in measure 134, followed by a half rest in measure 135. Bass clef: Half note in measure 134, followed by eighth-note accompaniment in measure 135.

136

Measures 136-137. Treble clef: Half rest in measure 136, followed by sixteenth-note runs in measure 137. Bass clef: Eighth-note accompaniment throughout.

138

Measures 138-139. Treble clef: Sixteenth-note runs with slurs and fingerings (3, 4, 3, 4, 1). Bass clef: Eighth-note accompaniment.

140

Measures 140-141. Treble clef: Sixteenth-note runs with slurs and fingerings (4, 3). Bass clef: Eighth-note accompaniment.

String Quartet - 17

142

3

p *sf*

147

3

3

155

2 3

159

4

3 3 4

161

1 3

163

f *p*

2 3 1 4

String Quartet - 18

Allemande

Measures 1-8 of the Allemande. The piece is in 3/8 time and B-flat major. The first four measures feature a rhythmic pattern of eighth and sixteenth notes in both hands, with dynamics *f*, *sf*, and *sf*. The last four measures consist of sustained chords in the right hand and moving lines in the left hand, ending with a *p* dynamic.

Measures 9-17. Measures 9-11 continue the rhythmic pattern from the first system. Measures 12-17 feature a more complex texture with moving lines in both hands, including a *p* dynamic in measure 15.

Measures 18-25. Measures 18-20 continue the rhythmic pattern. Measures 21-25 feature sustained chords in the right hand and moving lines in the left hand, with a *f* dynamic in measure 25.

Measures 26-34. Measures 26-28 continue the rhythmic pattern. Measures 29-34 feature a more complex texture with moving lines in both hands, including a *p* dynamic in measure 30.

Measures 35-44. Measures 35-39 feature a complex texture with moving lines in both hands. Measures 40-44 feature a repeat sign followed by a *p* dynamic in measure 40 and a *sf* dynamic in measure 42.

Measures 45-52. Measures 45-49 feature a complex texture with moving lines in both hands, including a *p* dynamic in measure 45 and a *sf* dynamic in measure 47. Measures 50-52 feature a *p* dynamic in measure 50 and a *sf* dynamic in measure 52.

String Quartet - 19

54

63

72

82

88

Alternativo

95

String Quartet - 20

102

Measures 102-107 of a string quartet score. The system consists of a grand staff with a treble and bass clef. Measures 102-104 are marked with a repeat sign. Measures 105-107 show a melodic line in the treble staff and a bass line in the bass staff. The key signature has one flat (B-flat).

108

Measures 108-113 of a string quartet score. The system consists of a grand staff with a treble and bass clef. Measures 108-113 show a melodic line in the treble staff and a bass line in the bass staff. The key signature has one flat (B-flat).

114

Measures 114-120 of a string quartet score. The system consists of a grand staff with a treble and bass clef. Measures 114-120 show a melodic line in the treble staff and a bass line in the bass staff. The key signature has one flat (B-flat).

121

Measures 121-127 of a string quartet score. The system consists of a grand staff with a treble and bass clef. Measures 121-127 show a melodic line in the treble staff and a bass line in the bass staff. The key signature has one flat (B-flat).

128

Measures 128-134 of a string quartet score. The system consists of a grand staff with a treble and bass clef. Measures 128-134 show a melodic line in the treble staff and a bass line in the bass staff. The key signature has one flat (B-flat).

135

Measures 135-141 of a string quartet score. The system consists of a grand staff with a treble and bass clef. Measures 135-141 show a melodic line in the treble staff and a bass line in the bass staff. The key signature has one flat (B-flat).

String Quartet - 21

142

p

1 2

147

f *sf* *sf* *p*

155

f *sf* *sf* *p*

163

p *sf* *sf*

171

f *sf* *sf* *p* *sf*

179

sf

String Quartet - 22

188

Measures 188-197. The score is in G major (one sharp) and 4/4 time. The first system shows measures 188-197. The treble clef part has a melodic line with slurs and accents, marked with *p* and *sf*. The bass clef part has a supporting line with slurs and accents, also marked with *p* and *sf*.

198

Measures 198-206. The score continues with measures 198-206. The treble clef part has a melodic line with slurs and accents, marked with *p*. The bass clef part has a supporting line with slurs and accents, marked with *p*.

207

Measures 207-214. The score continues with measures 207-214. The treble clef part has a melodic line with slurs and accents, marked with *sf* and *f*. The bass clef part has a supporting line with slurs and accents, marked with *sf* and *f*.

215

Measures 215-223. The score continues with measures 215-223. The treble clef part has a melodic line with slurs and accents, marked with *sf* and *p*. The bass clef part has a supporting line with slurs and accents, marked with *sf* and *p*.

224

Measures 224-233. The score continues with measures 224-233. The treble clef part has a melodic line with slurs and accents, marked with *sf* and *p*. The bass clef part has a supporting line with slurs and accents, marked with *sf* and *p*.

234

Measures 234-243. The score continues with measures 234-243. The treble clef part has a melodic line with slurs and accents, marked with *sf* and *p*. The bass clef part has a supporting line with slurs and accents, marked with *sf* and *p*.

String Quartet - 23

Presto

Measures 1-5 of the musical score. The piece is in 6/8 time and B-flat major. The first staff (treble clef) begins with a mezzo-forte (*mf*) dynamic and features a rhythmic pattern of eighth and sixteenth notes. The second staff (bass clef) contains whole rests for these five measures.

Measures 6-10 of the musical score. Measure 6 continues the treble staff's pattern. Measure 7 introduces a forte (*f*) dynamic in the bass staff. Measure 8 features a repeat sign in both staves. Measures 9 and 10 are marked piano (*p*) and show a change in the bass staff's rhythmic pattern.

Measures 11-16 of the musical score. Measures 11 and 12 show a melodic line in the treble staff and a supporting line in the bass staff. Measures 13 and 14 continue this texture. Measures 15 and 16 feature a more active bass staff with eighth-note patterns.

Measures 17-22 of the musical score. Measures 17 and 18 show a melodic phrase in the treble staff. Measures 19 and 20 feature a double bar line with a '2' above and below, indicating a second ending. Measures 21 and 22 conclude this section with a final melodic note in the treble staff.

Measures 23-26 of the musical score. Measures 23 and 24 continue the treble staff's melodic line. Measures 25 and 26 show a more active bass staff with eighth-note patterns, mirroring the treble staff's activity.

Measures 27-30 of the musical score. Measures 27 and 28 continue the treble staff's melodic line. Measure 29 features a forte (*f*) dynamic in the bass staff. Measure 30 concludes the piece with a final melodic phrase in the treble staff and a supporting line in the bass staff.

String Quartet - 24

30

ff *p* *ff* *p*

37

p

43

p

49

p

55

p

61

p

String Quartet - 25

70

Measures 70-76 of the String Quartet. The music is in G minor (three flats). The first system shows measures 70-76. The upper staff (treble clef) features a melodic line with eighth and quarter notes, including a half note G in measure 76. The lower staff (bass clef) provides harmonic support with eighth and quarter notes, including a half note G in measure 76. A mezzo-forte (*mf*) dynamic marking is present in measure 74.

77

Measures 77-83 of the String Quartet. The music continues in G minor. The upper staff has a melodic line with eighth and quarter notes, including a half note G in measure 83. The lower staff has a melodic line with eighth and quarter notes, including a half note G in measure 83. A piano (*p*) dynamic marking is present in measure 79.

84

Measures 84-88 of the String Quartet. The music continues in G minor. The upper staff has a melodic line with eighth and quarter notes, including a half note G in measure 88. The lower staff has a melodic line with eighth and quarter notes, including a half note G in measure 88. A piano (*p*) dynamic marking is present in measure 86.

89

Measures 89-93 of the String Quartet. The music continues in G minor. The upper staff has a melodic line with eighth and quarter notes, including a half note G in measure 93. The lower staff has a melodic line with eighth and quarter notes, including a half note G in measure 93. A forte (*f*) dynamic marking is present in measure 91.

94

Measures 94-99 of the String Quartet. The music continues in G minor. The upper staff has a melodic line with eighth and quarter notes, including a half note G in measure 99. The lower staff has a melodic line with eighth and quarter notes, including a half note G in measure 99. A sforzando (*sf*) dynamic marking is present in measure 96.

100

Measures 100-104 of the String Quartet. The music continues in G minor. The upper staff has a melodic line with eighth and quarter notes, including a half note G in measure 104. The lower staff has a melodic line with eighth and quarter notes, including a half note G in measure 104. A sforzando (*sf*) dynamic marking is present in measure 102.

String Quartet - 26

106

Measures 106-110 of a string quartet score. The key signature has two flats (B-flat and E-flat). The first staff (treble clef) contains a melodic line with slurs and accents. The second staff (bass clef) provides harmonic support with chords and moving lines. Dynamic markings include *sf* (sforzando), *f* (forte), *p* (piano), and *f* (forte) with hairpins.

111

Measures 111-115. The first staff continues the melodic line with slurs. The second staff features a more active bass line. Dynamics include *p* (piano) and *f* (forte) with hairpins.

116

Measures 116-120. The first staff has a melodic line with slurs. The second staff has a more active bass line. A *ff* (fortissimo) dynamic marking is present in measure 116.

121

Measures 121-125. The first staff has a melodic line with slurs. The second staff has a more active bass line. A *p* (piano) dynamic marking is present in measure 124.

127

Measures 127-132. The first staff has a melodic line with slurs. The second staff has a more active bass line. Dynamics include *p* (piano) and *f* (forte) with hairpins.

133

Measures 133-137. The first staff has a melodic line with slurs. The second staff has a more active bass line. Dynamics include *p* (piano) and *f* (forte) with hairpins.

String Quartet - 27

139

Measures 139-144. The music is in G minor (three flats). The treble staff features a melodic line with eighth and sixteenth notes, including a trill in measure 140 and a half-note rest in measure 141. The bass staff provides a harmonic accompaniment with eighth and sixteenth notes. A *sf* (sforzando) dynamic marking is present in measure 144.

145

Measures 145-151. The treble staff continues the melodic line with various dynamics: *sf* in measure 145, *f* in measure 146, and *p* in measure 147. The bass staff has rests in measures 145-147 and then enters with a melodic line in measure 148. A *p* (piano) dynamic marking is present in measure 151.

152

Measures 152-160. The treble staff features a melodic line with a *pp* (pianissimo) dynamic marking in measure 152. The bass staff has rests in measures 152-153 and then enters with a melodic line in measure 154. *sf* (sforzando) dynamic markings are present in measures 157 and 160.

161

Measures 161-165. The treble staff has rests in measures 161-162 and then enters with a melodic line in measure 163. The bass staff continues with a melodic line. *sf* (sforzando) dynamic markings are present in measures 163 and 164. A *p* (piano) dynamic marking is present in measure 165.

166

Measures 166-171. The treble staff features a melodic line with a *sf* (sforzando) dynamic marking in measure 166. The bass staff continues with a melodic line. The music concludes with a half-note rest in measure 171.

172

Measures 172-176. The treble staff has rests in measures 172-173 and then enters with a melodic line in measure 174. The bass staff continues with a melodic line. The music concludes with a half-note rest in measure 176.

String Quartet - 28

178

Measures 178-183. The music is in G major (one sharp). The right hand features a melodic line with eighth and sixteenth notes, often beamed together. The left hand provides a harmonic accompaniment with dotted half notes and eighth notes. A dynamic marking of *p* (piano) is present in measure 181.

184

Measures 184-189. The right hand continues with a melodic line. The left hand features a series of dotted half notes in the bass. A dynamic marking of *pp* (pianissimo) is present in measure 188.

190

Measures 190-194. The right hand features a melodic line with a long slur spanning measures 190-193. The left hand provides a harmonic accompaniment with dotted half notes. Measure 194 ends with a quarter rest.

195

Measures 195-200. The right hand features a melodic line with eighth notes. The left hand features a series of eighth notes. A dynamic marking of *f* (forte) is present in measure 196. Measures 199-200 end with a quarter rest.

201

Measures 201-205. The right hand features a melodic line with eighth notes. The left hand features a series of eighth notes. Measure 201 starts with a triplet of eighth notes in the right hand.

206

Measures 206-211. The right hand features a melodic line with eighth notes. The left hand features a series of eighth notes. A dynamic marking of *sf* (sforzando) is present in measures 206, 207, and 208. Measure 211 ends with a quarter rest.

String Quartet - 29

212

Measures 212-218 of the String Quartet. The score is in G major (one sharp) and 4/4 time. Measures 212-214 feature a treble staff with chords and a bass staff with whole rests. Measures 215-218 feature a treble staff with chords and a bass staff with eighth-note patterns. A piano (*p*) dynamic marking is present at the end of measure 218.

219

Measures 219-226 of the String Quartet. The score is in G major (one sharp) and 4/4 time. Measures 219-222 feature a treble staff with half-note and quarter-note patterns and a bass staff with half-note patterns. Measures 223-226 feature a treble staff with half-note and quarter-note patterns and a bass staff with half-note patterns. A piano (*p*) dynamic marking is present at the end of measure 226.

227

Measures 227-233 of the String Quartet. The score is in G major (one sharp) and 4/4 time. Measures 227-230 feature a treble staff with half-note and quarter-note patterns and a bass staff with half-note patterns. Measures 231-233 feature a treble staff with half-note and quarter-note patterns and a bass staff with half-note patterns. A piano (*p*) dynamic marking is present at the end of measure 233.

234

Measures 234-238 of the String Quartet. The score is in G major (one sharp) and 4/4 time. Measures 234-235 feature a treble staff with half-note and quarter-note patterns and a bass staff with half-note patterns. Measures 236-238 feature a treble staff with half-note and quarter-note patterns and a bass staff with half-note patterns. A piano (*p*) dynamic marking is present at the end of measure 238.

239

Measures 239-243 of the String Quartet. The score is in G major (one sharp) and 4/4 time. Measures 239-240 feature a treble staff with half-note and quarter-note patterns and a bass staff with half-note patterns. Measures 241-242 feature a treble staff with half-note and quarter-note patterns and a bass staff with half-note patterns. A piano (*p*) dynamic marking is present at the end of measure 243.

244

Measures 244-248 of the String Quartet. The score is in G major (one sharp) and 4/4 time. Measures 244-245 feature a treble staff with half-note and quarter-note patterns and a bass staff with half-note patterns. Measures 246-247 feature a treble staff with half-note and quarter-note patterns and a bass staff with half-note patterns. A piano (*p*) dynamic marking is present at the end of measure 248.

String Quartet - 30

249

255

256

p

261

262

mf

268

269

273

274

ff

p

278

279

ff

p

283

String Quartet - 31

285

Measures 285-290. The music is in G minor (three flats). The treble staff features a melodic line with eighth and quarter notes, while the bass staff provides harmonic support with a steady eighth-note accompaniment. Measure 290 ends with a whole note chord.

291

Measures 291-296. The treble staff continues the melodic development with eighth-note patterns. The bass staff features a more active line with eighth-note runs and rests. Measure 296 concludes with a half note in the treble and a whole note in the bass.

297

Measures 297-301. This section features a more complex texture. The treble staff has a melodic line with slurs and ties. The bass staff has a rhythmic accompaniment of eighth notes. Measure 301 includes a *sf* (sforzando) dynamic marking on a quarter note in the treble.

302

Measures 302-307. Measures 302-304 feature a rapid sixteenth-note passage in the treble, marked with *sf* and *f* dynamics. Measure 305 has a *p* (piano) dynamic marking. The bass staff provides a steady accompaniment of eighth notes.

308

Measures 308-315. The treble staff features a melodic line with slurs and ties. The bass staff has a rhythmic accompaniment of eighth notes. Measure 315 ends with a half note in the treble and a whole note in the bass.

316

Measures 316-321. The treble staff features a melodic line with slurs and ties. The bass staff has a rhythmic accompaniment of eighth notes. Measure 321 includes a *mf* (mezzo-forte) dynamic marking on a quarter note in the treble.

String Quartet - 32

323

p

330

335

p *f*

340

sf *sf* *p* *f*

346

sf

352

mf

String Quartet - 33

358

Measures 358-362 of the String Quartet. The first system shows a treble and bass staff. The treble staff has a melodic line with eighth and sixteenth notes, while the bass staff has a more rhythmic accompaniment with dotted notes and eighth notes. The key signature is two flats (B-flat and E-flat).

363

Measures 363-367. The first system continues the melodic line in the treble staff. The second system shows a change in dynamics, with *sf* (sforzando) markings in measures 363, 364, and 365, followed by *f* (forte) in measure 366, and *p* (piano) in measure 367. The bass staff has a more active role in measures 363-365, then rests in 366 and 367.

370

Measures 370-375. The first system shows a change in dynamics to *p* (piano) in measure 370. The treble staff has a melodic line with eighth and sixteenth notes, while the bass staff has a more rhythmic accompaniment with dotted notes and eighth notes. The key signature is two flats (B-flat and E-flat).

376

Measures 376-380. The first system shows a melodic line in the treble staff with eighth and sixteenth notes. The bass staff has a more rhythmic accompaniment with dotted notes and eighth notes. The key signature is two flats (B-flat and E-flat).

381

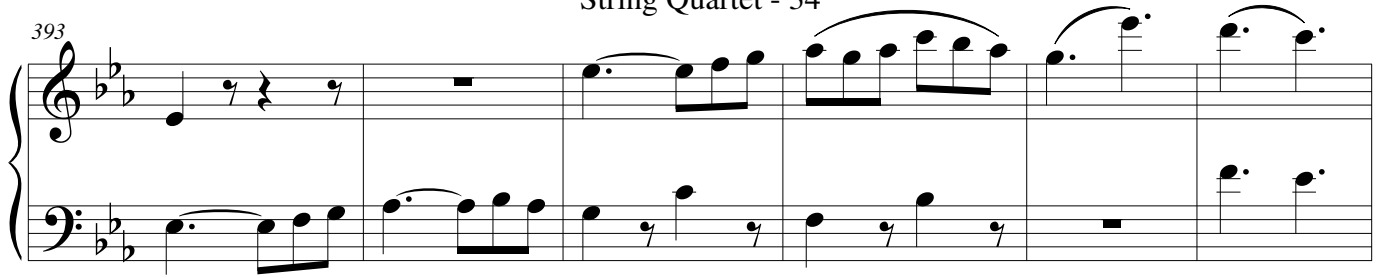
Measures 381-386. The first system shows a change in dynamics to *mf* (mezzo-forte) in measure 381. The treble staff has a melodic line with eighth and sixteenth notes, while the bass staff has a more rhythmic accompaniment with dotted notes and eighth notes. The key signature is two flats (B-flat and E-flat).

387

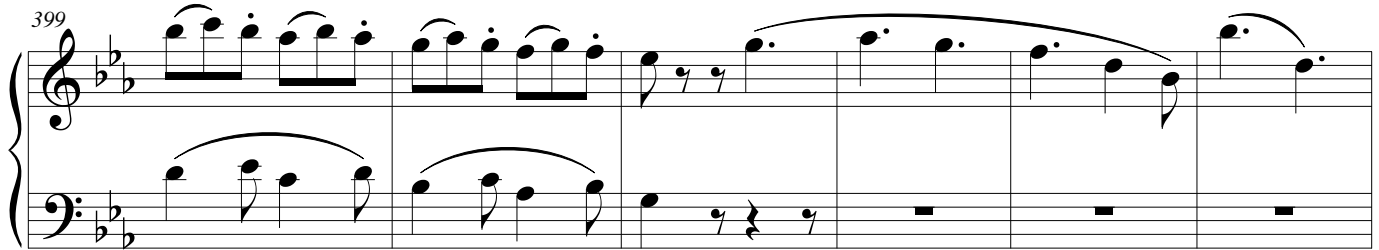
Measures 387-391. The first system shows a melodic line in the treble staff with eighth and sixteenth notes. The bass staff has a more rhythmic accompaniment with dotted notes and eighth notes. The key signature is two flats (B-flat and E-flat).

String Quartet - 34

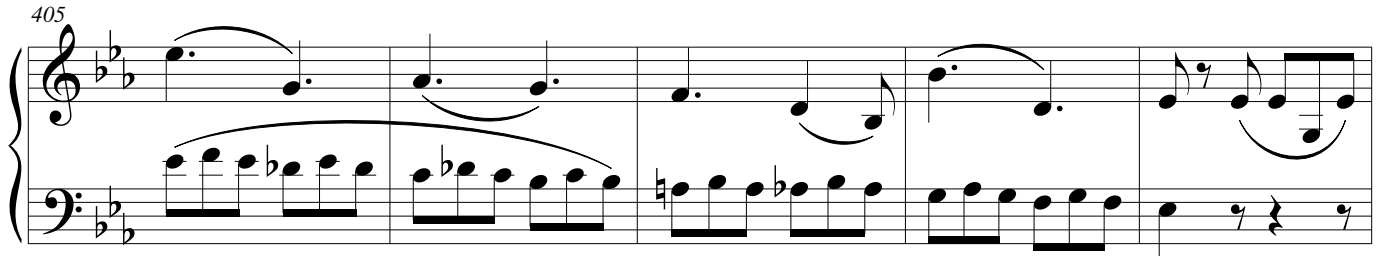
393



399



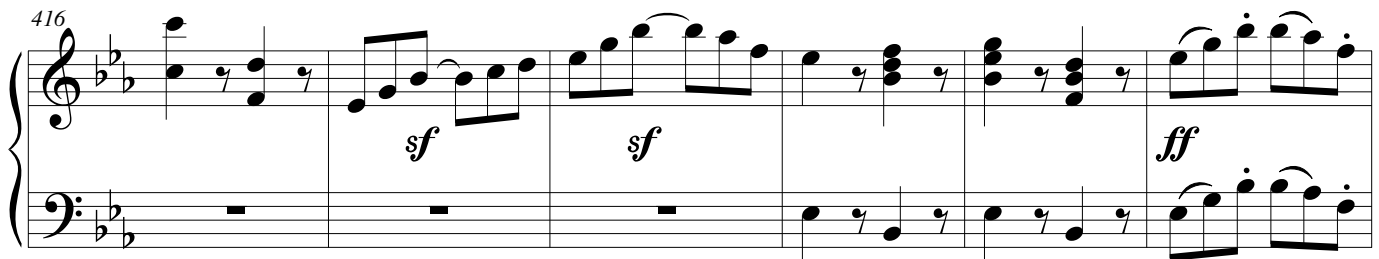
405



410



416



422

