

Duett I

op.9

Bernhard Romberg

1767 in Dinklage; † 13. August 1841

Bearbeitung für 2 Gitarren

Anton Höger

Allegro, poco moderato

Git. 2
6=Ré

7
8
11
8
16
8
22
8
28
8
32
8
35
8

f *p* *cresc.* *f* *dim.* *p* *pp* *cresc.* *f* *dim.* *3* *ff* *cresc.* *f* *3* *3* *3* *3* *cresc.* *3* *3* *3* *3* *poco tranq.* *ff* *3* *3* *3* *p* *3* *cresc.*

2
40

sf *pp* *cresc.*

46

f *p* *dolce* 3 3 3 *pp* 3

50

3 3 *cresc.* *sf* *pp*

55

cresc. 3 3 3 3 *f* *p*

59

cresc. *f*

61

sempre f *p*

65

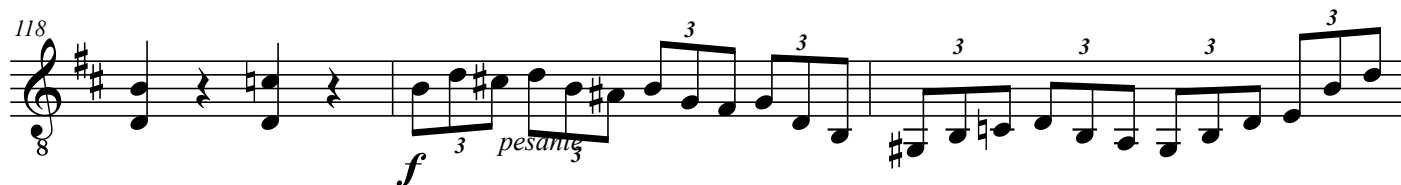
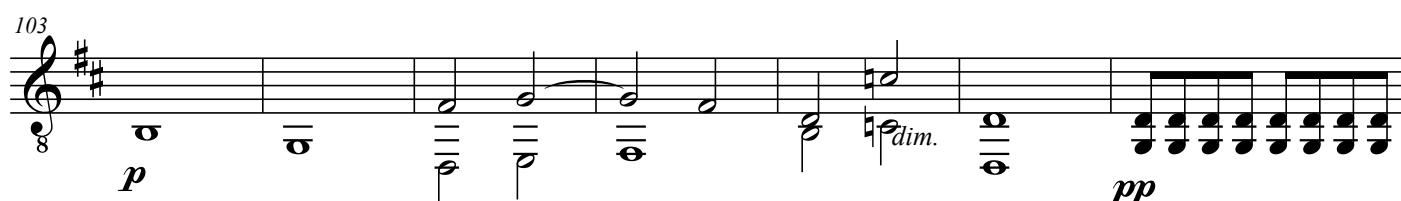
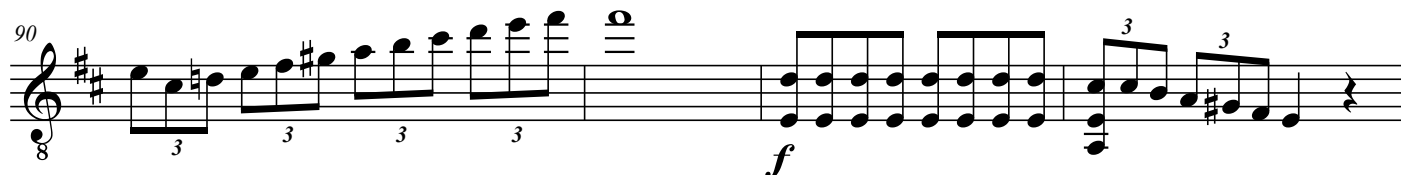
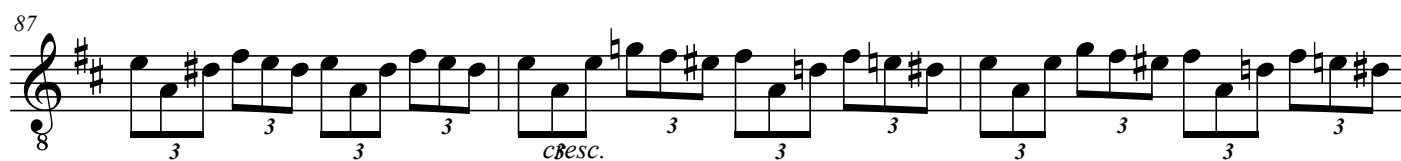
f *ff* *p*

70

pp *cresc.* *p*

76

f *p* *dim.* *pp*



4
121

8

124

8

sempre f

128

8

p

134

8

f

sempre f

138

8

p

cresc.

f

p

143

8

mf

dim.

f

tr

149

8

pp

p

mp

159

8

p

cresc.

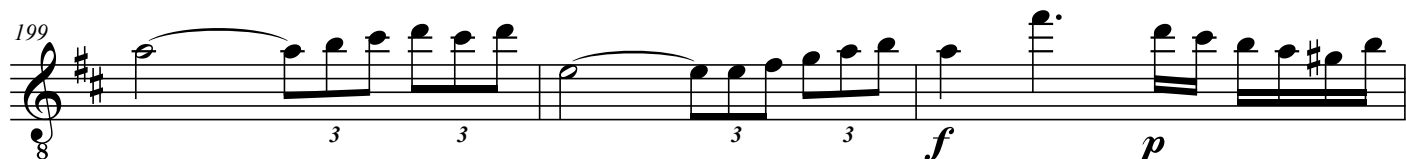
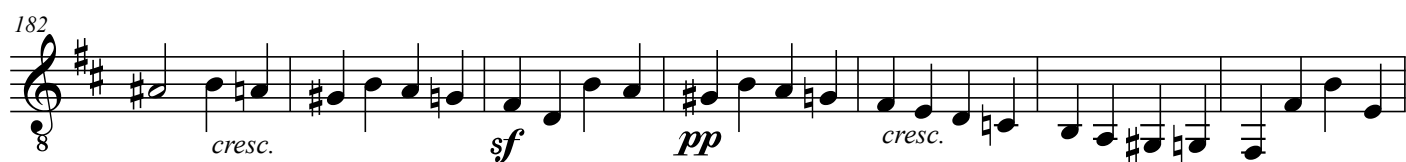
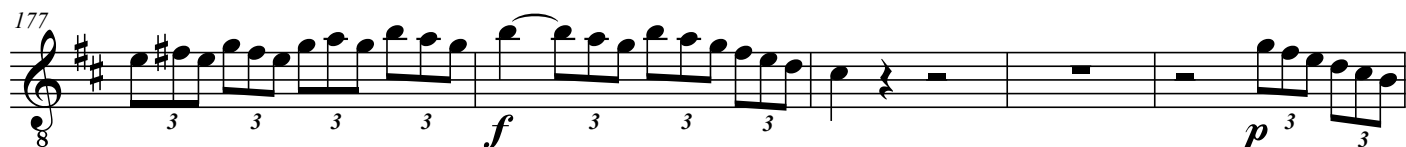
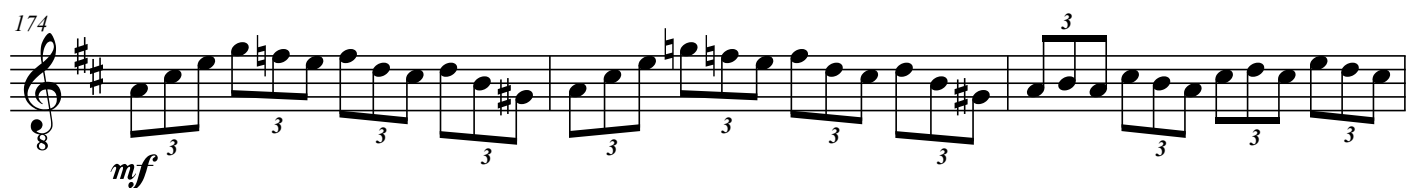
165

8

f

dim.

p



6
208

mf *f* *p*

214

f *p* *dim.*

218

pp

222

poco cresc. *p*

226

mf

230

f *fz*

235

sempre f *fz* *ff*

240

sempre f *dim.*

245

risol.

Grazioso
(quasi Allegretto)

7

248

p *pfz* *p*

253

cresc. *mf* *sempre f* *f*

257

dim. *p* *dolce*

262

cresc. *mf*

267

sempre f *f* *dim.* *p* *ff*

272

p *dim.* *p* *cresc.*

277

mf

281

dim. ----- e ---- *poco rall.* *pp*

285

sempre pp *cresc. poco a poco*

8
290

dim.

293

p *p* *cresc.*

297

f *sempre f* *p*

302

f *pp* *f*

306

p *tr* *sf*

310

p *p* *cresc.*

315

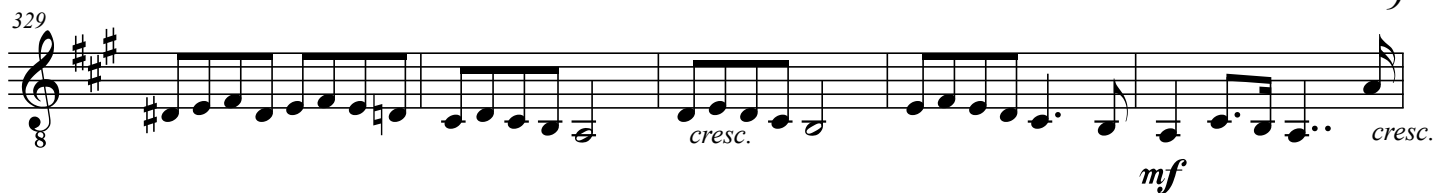
mf *sf* *f*

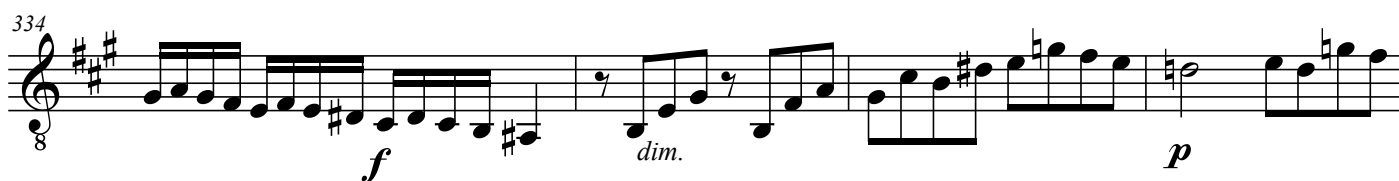
320

dim. *p* *tr*

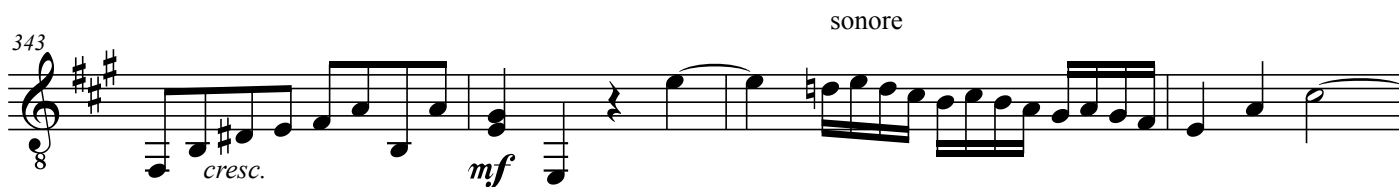
324

p

329  *cresc.* *mf* *cresc.*

334  *f* *dim.* *p*

338 

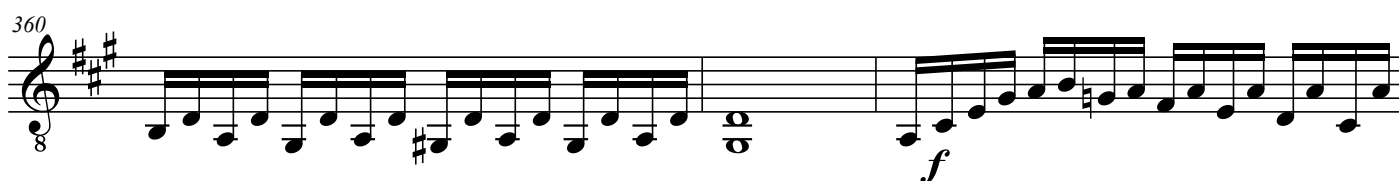
343  *cresc.* *mf* *sonore*

347  *dim.* *pp*

351  *leggiero*

354  *f* *dim.* *p* *cresc.*

358 

360  *f*

10
363

fz *dim.* *p*

368

sf *sf* *p*

372

dim.-----e-rall. *pp*

Finale
Presto

11

377

p *cresc. poco.a poco*

388

mf *p³* *leggero* *3*

398

cresc. poco.a poco *3*

405

mf *pp* *sf* *p*

413

cresc. poco.a poco *mf*

424

f

433

pp

442

mp *3*

452

pp *3*

Detailed description of the musical score: The score consists of nine staves of music. Staff 1 (measures 377-387) starts with a piano (*p*) dynamic and a crescendo (*cresc. poco.a poco*). Staff 2 (measures 388-397) begins with a mezzo-forte (*mf*) dynamic, includes a triplet of eighth notes marked *p³*, and features a triplet of eighth notes marked *leggero*. Staff 3 (measures 398-404) continues with a crescendo and multiple triplets. Staff 4 (measures 405-412) shows dynamics of *mf*, *pp*, *sf*, and *p*. Staff 5 (measures 413-423) includes a crescendo and a mezzo-forte (*mf*) dynamic. Staff 6 (measures 424-432) features a forte (*f*) dynamic and triplets. Staff 7 (measures 433-441) is marked *pp*. Staff 8 (measures 442-451) includes a mezzo-piano (*mp*) dynamic and a triplet. Staff 9 (measures 452-458) ends with a piano-piano (*pp*) dynamic and triplets.

12
458

cresc. poco a poco

463

f

469

p

479

cresc. poco a poco

490

fz p pp

501

cresc.

510

con bravura f

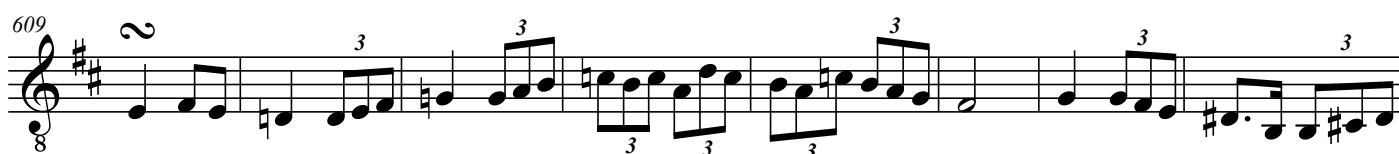
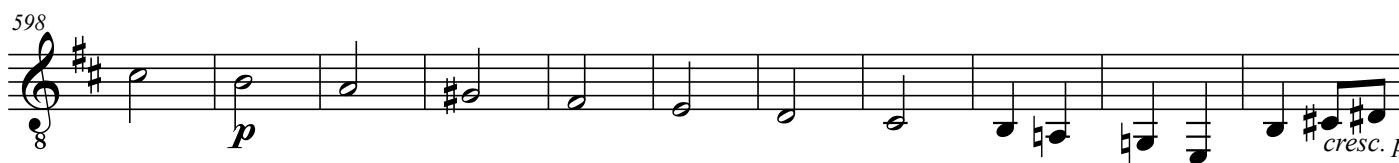
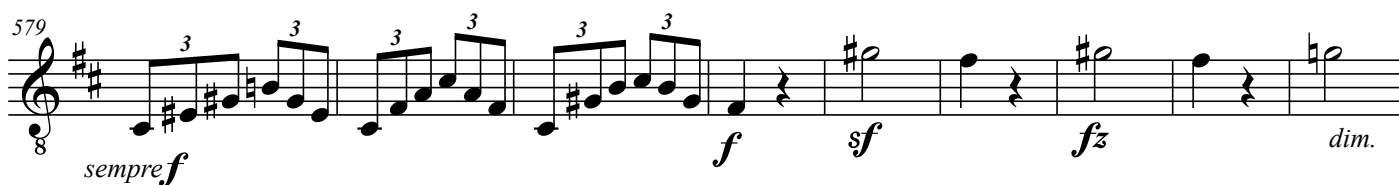
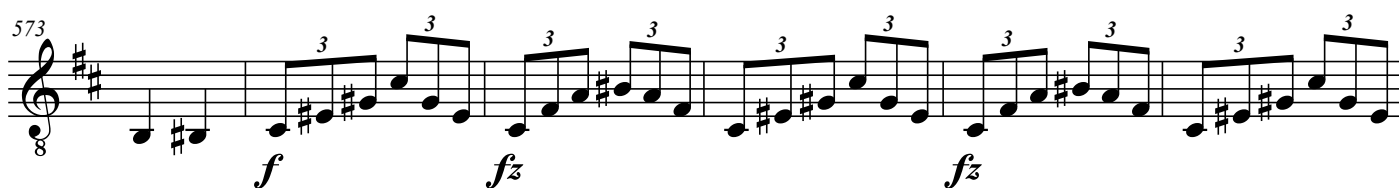
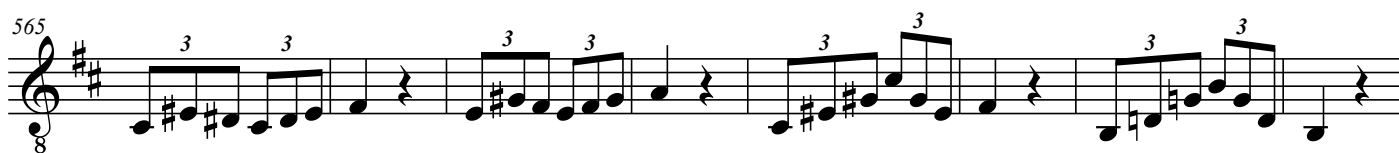
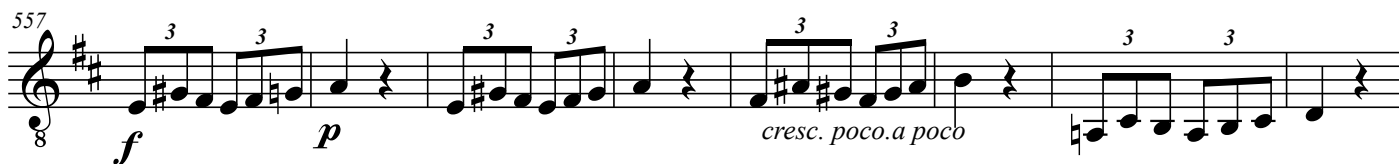
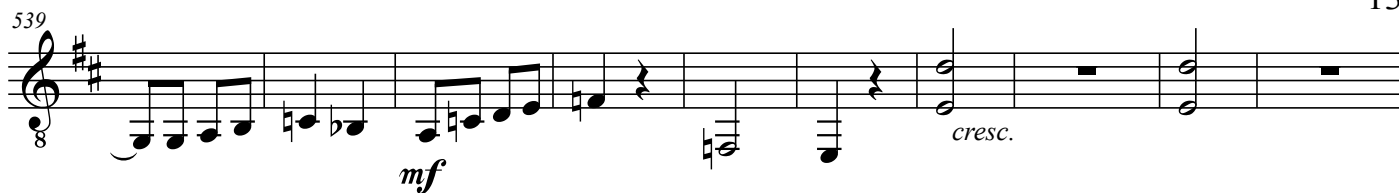
519

p

529

tranquillo

p pp



14
617

mf *cresc. poco a poco*

623

630

f

639

ffz *p*

649

cresc. poco a poco

662

p *cresc. poco a poco*

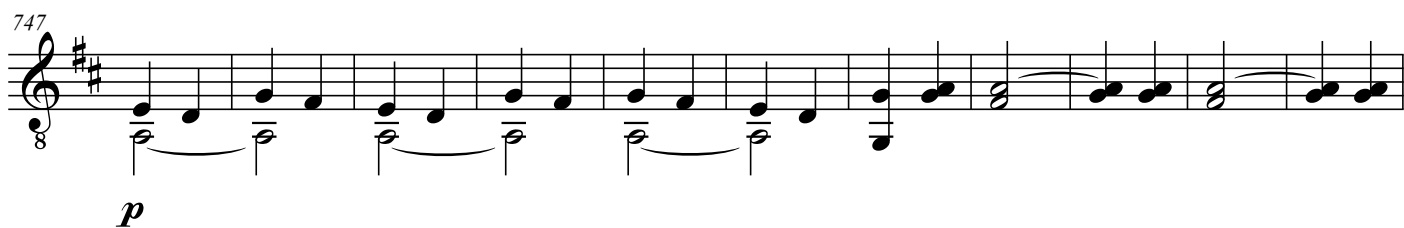
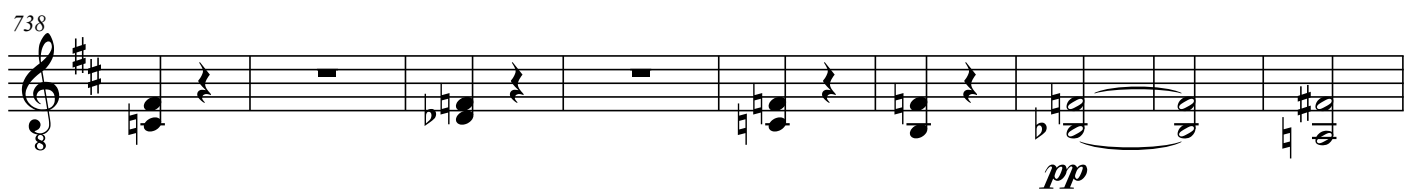
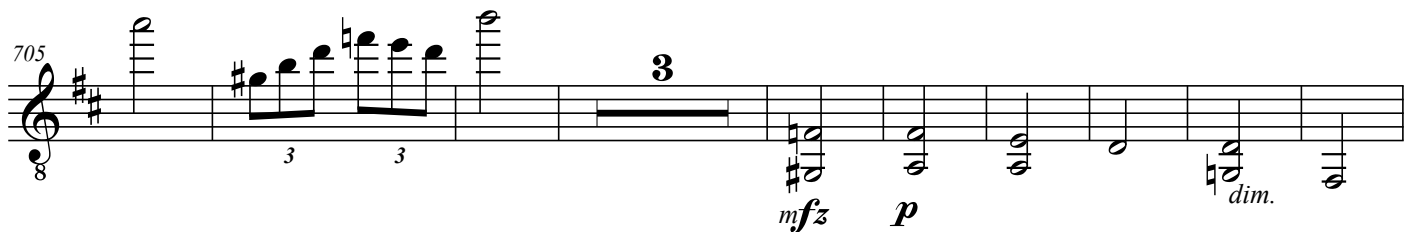
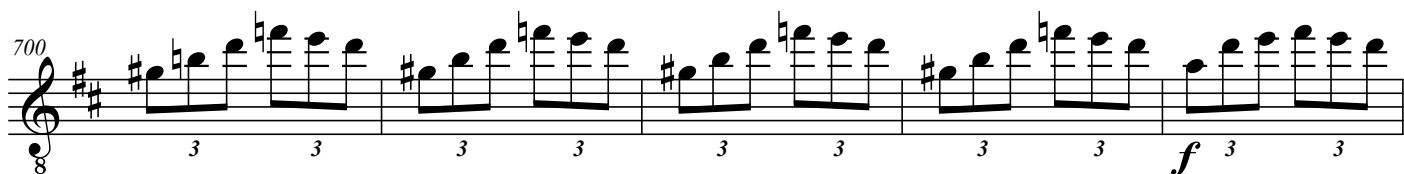
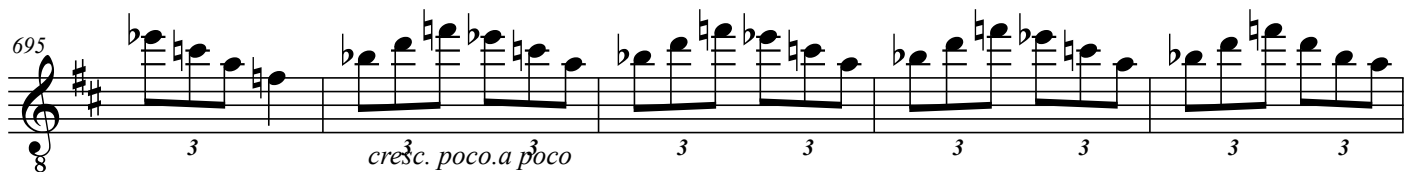
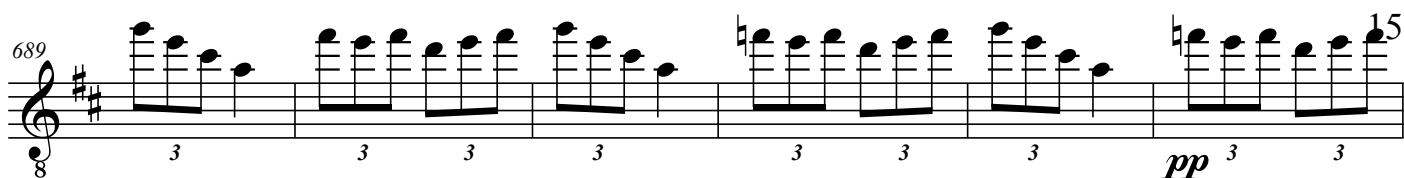
669

mf

676

683

p *f*



16
767

p dolce 3 3 3 3 3 3 *cresc. poco a poco*

776

3 3 3 3 3 3 3 *f* 3 3 3 *sempre f*

784

fp

794

dim.-----e- rall. 3 3 *pp*