

Horn in F 4

Concerto stilizzato

paraphrase on a motif by Brahms

PARTE PRIMA: "CADENZA"

Adagio ♩ = 60 Cadenza Tamás Beischer-Matyó

22 25 3 30

ppp *ff* *ff*

PARTE SECONDA: "FORMA-SONATA"

poco rall. . . Poco sostenuto Allegro con brio ♩ = 180 (♩ = 60)

35 40

ff *ff* *ff* *ff* *ff* *ff*

40 45

pp *p* *p*

45 50

p poco a poco cresc. . .

50 60

(cresc.) *mf* *f* *mf* *f*

60 65

mf *f* *f* *f*

65 70

ff *f* *p* *f* *p*

Copyright Tamás Beischer-Matyó, 1996

www.beischermatyó.hu/concerto_stilizzato

This work is licensed under the Creative Commons Attribution-NonCommercial-NoDerivatives 4.0 International License.
To view a copy of this license, visit www.creativecommons.org/licenses/by-nc-nd/4.0/

Fl. 75

f molto espressivo

80

p *f* *f* *sf* *p*

85 3 Tpt. 1-2 90

sfz *sfz* *sfz* *ff*

poco ritard. Sostenuto $\text{♩} = 48$ ($\text{♩} = 144$)

open 95

p *ff* grandioso

allarg. a tempo $\text{♩} = 60$ ($\text{♩} = 180$)

100

105 Hn. 1-3 poco ritard.

a tempo poco ritard. a tempo 110

tr *pp* *p* *sf*

115

f

B. cl., Vc. 120 Hn. 1 Hn. 1-2

f espress. *mf* *f* *mf* *f*

125

f *p* *mp*

130 *mp* *f* *p*

molto rall. a tempo

135 4 C. a., Tpt. 3 140 *pp* *ff* *p* ten. ten.

+Cl. 1 145 *p* *f*

rall. **Meno allegro** ♩ = 120 (senza rall.) **accel.** al ♩ = 180 (a tempo)

15 *p*

165 Fl., Cl. 1 *mp* *mf* *f*

170 Hn. 1-2 *ff* open *ff*

175 180

PARTE TERZA: "LIED"

subito **Adagio molto** ♩ = 60 (♩ = ♩)

185 5 2 10

allargando a tempo

205 210 2 3 2 4

molto rall.

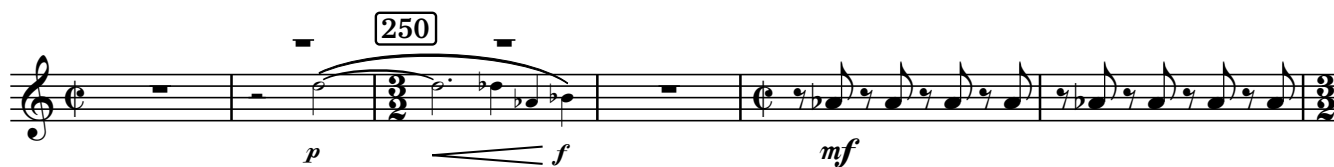
più adagio e molto flessibile ♩ = 48 poco a poco allarg. - - - -



PARTE QUARTA: "RONDÒ"

- - a tempo (♩ = 48) rall.

Allegro vivace ♩ = 180 (♩ = 90)



265 *open*

f

270

275 *3* *Tbn. 3, Tba.* *tutta forza* *280* *tutta forza*

290 *5* *2* *2*

poco ritard. a tempo

295 *Picc., S. pno.* *f* *mp* *f* *mp* *f* *mp* *300*

8 *flutt. ord.* *ff* *flutt. ord.*

rall.

315

Meno vivace ♩ = 144

flutt. ord. *flutt. ord.* *flutt.* *ord.* *f*

320 *open* *3* *2* *ff*

325 *14* *340* *rall. a tempo* *Tpt. 1* *mp* *S. pno.*

345 *ff* rall. - - -

350 *Allegro vivace* ♩ = 180 *f marcato* 355

360 365

370

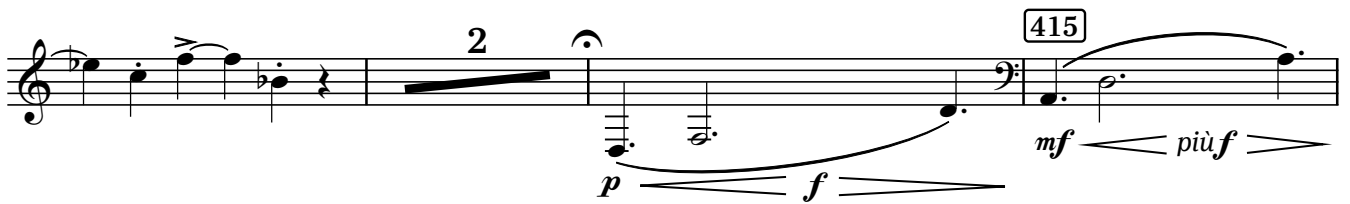
375

380 *poco rall. Sostenuto* ♩ = 48 (♩ = 144) *ff grandioso*

385 *allarg. - - a tempo* ♩ = 180 390 *rall. molto* 2

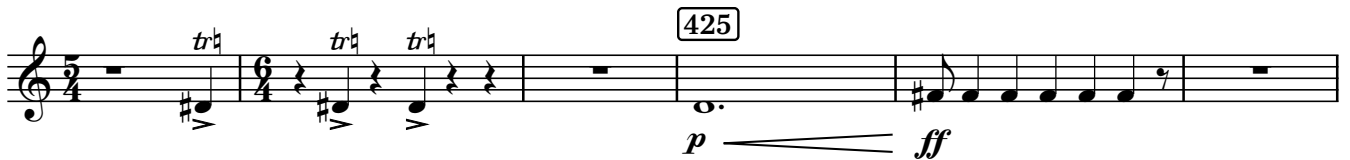
PARTE QUINTA: "CONCLUSIONE"

a tempo ♩ = 180 395 *fff sf*



rall. Poco sostenuto

a tempo, ma poco agitato



rall. molto a tempo, molto pomposo

