

Te Deum Brasil (alternado)

Op. 65

Arranjo de Justino da Conceição

Allegro

01



6



12



18



Allegro

02

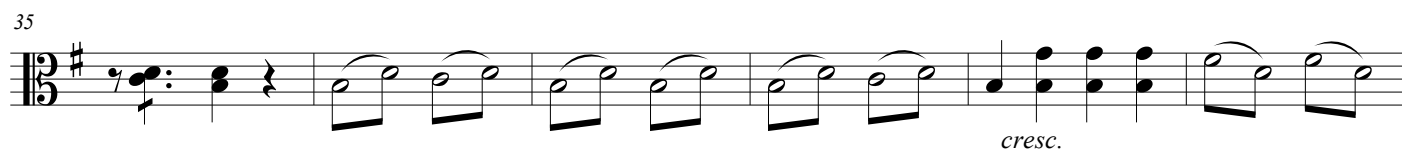
24



29



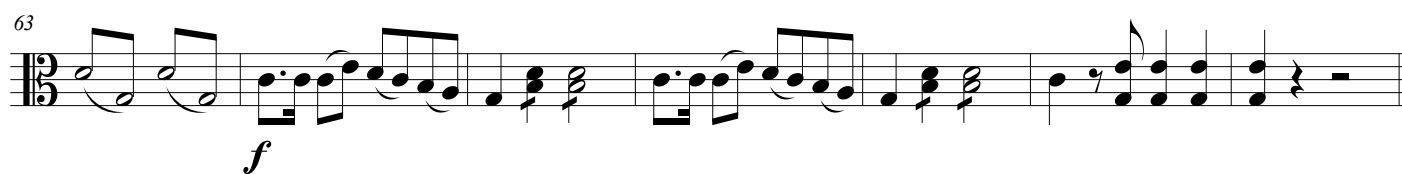
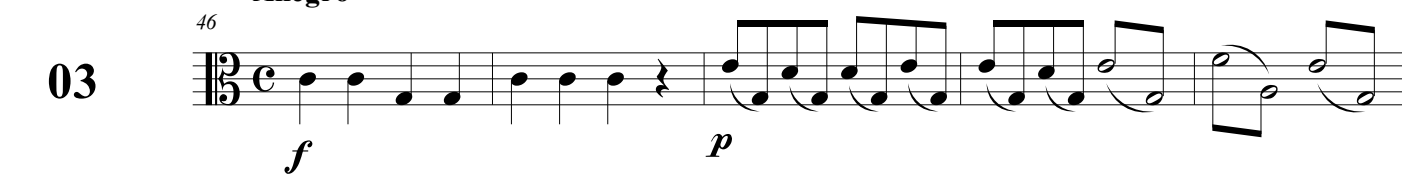
35



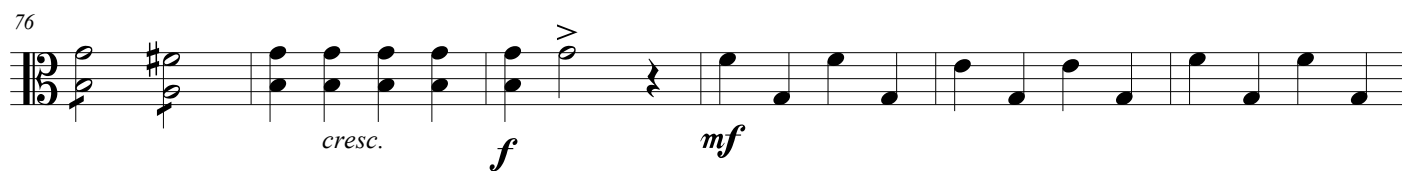
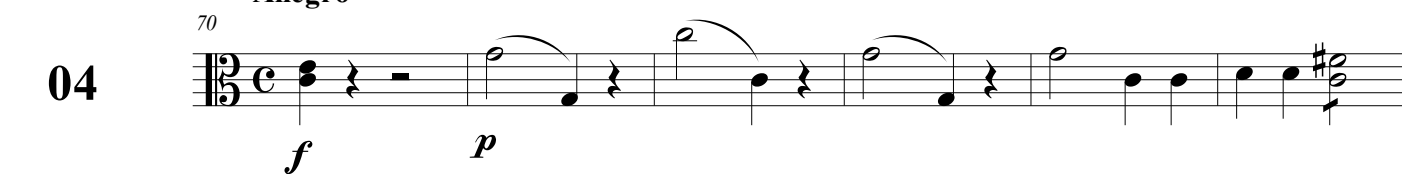
41



03 Allegro



04 Allegro



Andante religioso

05

88 *mf* *pizz.* *p*

92 arco

98

104 *pizz.*

109 arco *rit.* *f* *f*

Allegro

06

115 *f* *mf*

121 *f* *mf* *f* *mf*

127 *cresc.* *f*

133

Allegro moderato

07 ¹⁴⁰

p

¹⁴⁵

cresc. f p

¹⁵²

cresc. f

Allegro

08 ¹⁵⁹

f

¹⁶⁴

f mf

¹⁷⁰

mf

¹⁷⁶

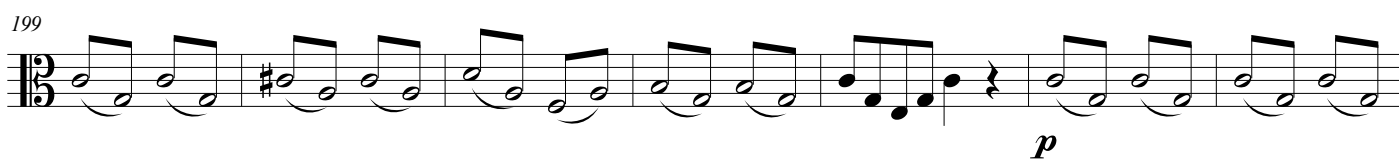
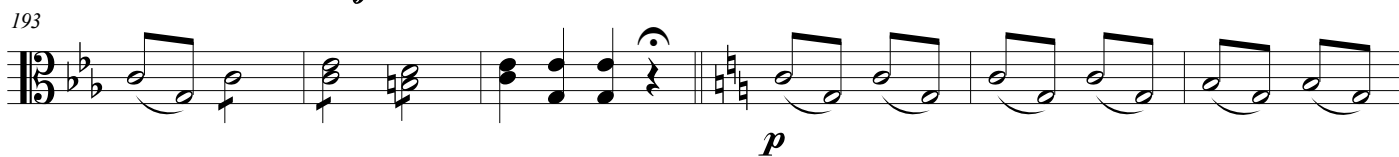
cresc.

¹⁸²

f

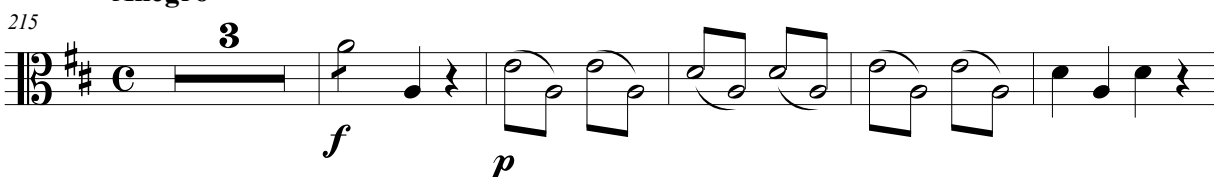
Andante levado

09



Allegro

10



257

262

267

272

278

278

f

285

Musical notation for the bass line of 'The Rose Tree'. The key signature has one sharp (F#). The melody is written on a single staff with a treble clef. It begins with a quarter note G4, followed by an eighth note A4, a quarter note B4, and a quarter note C5. This is followed by a half note D5, a quarter note E5, and a quarter note F#5. The melody then descends: a quarter note E5, a quarter note D5, a quarter note C5, and a quarter note B4. This is followed by a half note A4, a quarter note G4, and a quarter note F#4. The melody ends with a half note E4 and a quarter note D4. The lyrics 'The Rose Tree' are written below the staff.

293

Musical notation for the bass line of 'The Rose Tree'. The key signature has one sharp (F#), and the time signature is 3/4. The melody is written in a single staff with a treble clef. The notes are: G4 (quarter), A4 (quarter), B4 (quarter), C5 (quarter), B4 (quarter), A4 (quarter), G4 (quarter), F#4 (quarter), E4 (quarter), D4 (half), C4 (half), B3 (half), A3 (half), G3 (half), F#3 (half), E3 (half), D3 (half), C3 (half), B2 (half), A2 (half), G2 (half), F#2 (half), E2 (half), D2 (half), C2 (half), B1 (half), A1 (half), G1 (half), F#1 (half), E1 (half), D1 (half), C1 (half), B0 (half), A0 (half), G0 (half), F#0 (half), E0 (half), D0 (half), C0 (half), B-1 (half), A-1 (half), G-1 (half), F#-1 (half), E-1 (half), D-1 (half), C-1 (half), B-2 (half), A-2 (half), G-2 (half), F#-2 (half), E-2 (half), D-2 (half), C-2 (half), B-3 (half), A-3 (half), G-3 (half), F#-3 (half), E-3 (half), D-3 (half), C-3 (half), B-4 (half), A-4 (half), G-4 (half), F#-4 (half), E-4 (half), D-4 (half), C-4 (half), B-5 (half), A-5 (half), G-5 (half), F#-5 (half), E-5 (half), D-5 (half), C-5 (half), B-6 (half), A-6 (half), G-6 (half), F#-6 (half), E-6 (half), D-6 (half), C-6 (half), B-7 (half), A-7 (half), G-7 (half), F#-7 (half), E-7 (half), D-7 (half), C-7 (half), B-8 (half), A-8 (half), G-8 (half), F#-8 (half), E-8 (half), D-8 (half), C-8 (half), B-9 (half), A-9 (half), G-9 (half), F#-9 (half), E-9 (half), D-9 (half), C-9 (half), B-10 (half), A-10 (half), G-10 (half), F#-10 (half), E-10 (half), D-10 (half), C-10 (half), B-11 (half), A-11 (half), G-11 (half), F#-11 (half), E-11 (half), D-11 (half), C-11 (half), B-12 (half), A-12 (half), G-12 (half), F#-12 (half), E-12 (half), D-12 (half), C-12 (half), B-13 (half), A-13 (half), G-13 (half), F#-13 (half), E-13 (half), D-13 (half), C-13 (half), B-14 (half), A-14 (half), G-14 (half), F#-14 (half), E-14 (half), D-14 (half), C-14 (half), B-15 (half), A-15 (half), G-15 (half), F#-15 (half), E-15 (half), D-15 (half), C-15 (half), B-16 (half), A-16 (half), G-16 (half), F#-16 (half), E-16 (half), D-16 (half), C-16 (half), B-17 (half), A-17 (half), G-17 (half), F#-17 (half), E-17 (half), D-17 (half), C-17 (half), B-18 (half), A-18 (half), G-18 (half), F#-18 (half), E-18 (half), D-18 (half), C-18 (half), B-19 (half), A-19 (half), G-19 (half), F#-19 (half), E-19 (half), D-19 (half), C-19 (half), B-20 (half), A-20 (half), G-20 (half), F#-20 (half), E-20 (half), D-20 (half), C-20 (half), B-21 (half), A-21 (half), G-21 (half), F#-21 (half), E-21 (half), D-21 (half), C-21 (half), B-22 (half), A-22 (half), G-22 (half), F#-22 (half), E-22 (half), D-22 (half), C-22 (half), B-23 (half), A-23 (half), G-23 (half), F#-23 (half), E-23 (half), D-23 (half), C-23 (half), B-24 (half), A-24 (half), G-24 (half), F#-24 (half), E-24 (half), D-24 (half), C-24 (half), B-25 (half), A-25 (half), G-25 (half), F#-25 (half), E-25 (half), D-25 (half), C-25 (half), B-26 (half), A-26 (half), G-26 (half), F#-26 (half), E-26 (half), D-26 (half), C-26 (half), B-27 (half), A-27 (half), G-27 (half), F#-27 (half), E-27 (half), D-27 (half), C-27 (half), B-28 (half), A-28 (half), G-28 (half), F#-28 (half), E-28 (half), D-28 (half), C-28 (half), B-29 (half), A-29 (half), G-29 (half), F#-29 (half), E-29 (half), D-29 (half), C-29 (half), B-30 (half), A-30 (half), G-30 (half), F#-30 (half), E-30 (half), D-30 (half), C-30 (half), B-31 (half), A-31 (half), G-31 (half), F#-31 (half), E-31 (half), D-31 (half), C-31 (half), B-32 (half), A-32 (half), G-32 (half), F#-32 (half), E-32 (half), D-32 (half), C-32 (half), B-33 (half), A-33 (half), G-33 (half), F#-33 (half), E-33 (half), D-33 (half), C-33 (half), B-34 (half), A-34 (half), G-34 (half), F#-34 (half), E-34 (half), D-34 (half), C-34 (half), B-35 (half), A-35 (half), G-35 (half), F#-35 (half), E-35 (half), D-35 (half), C-35 (half), B-36 (half), A-36 (half), G-36 (half), F#-36 (half), E-36 (half), D-36 (half), C-36 (half), B-37 (half), A-37 (half), G-37 (half), F#-37 (half), E-37 (half), D-37 (half), C-37 (half), B-38 (half), A-38 (half), G-38 (half), F#-38 (half), E-38 (half), D-38 (half), C-38 (half), B-39 (half), A-39 (half), G-39 (half), F#-39 (half), E-39 (half), D-39 (half), C-39 (half), B-40 (half), A-40 (half), G-40 (half), F#-40 (half), E-40 (half), D-40 (half), C-40 (half), B-41 (half), A-41 (half), G-41 (half), F#-41 (half), E-41 (half), D-41 (half), C-41 (half), B-42 (half), A-42 (half), G-42 (half), F#-42 (half), E-42 (half), D-42 (half), C-42 (half), B-43 (half), A-43 (half), G-43 (half), F#-43 (half), E-43 (half), D-43 (half), C-43 (half), B-44 (half), A-44 (half), G-44 (half), F#-44 (half), E-44 (half), D-44 (half), C-44 (half), B-45 (half), A-45 (half), G-45 (half), F#-45 (half), E-45 (half), D-45 (half), C-45 (half), B-46 (half), A-46 (half), G-46 (half), F#-46 (half), E-46 (half), D-46 (half), C-46 (half), B-47 (half), A-47 (half), G-47 (half), F#-47 (half), E-47 (half), D-47 (half), C-47 (half), B-48 (half), A-48 (half), G-48 (half), F#-48 (half), E-48 (half), D-48 (half), C-48 (half), B-49 (half), A-49 (half), G-49 (half), F#-49 (half), E-49 (half), D-49 (half), C-49 (half), B-50 (half), A-50 (half), G-50 (half), F#-50 (half), E-50 (half), D-50 (half), C-50 (half), B-51 (half), A-51 (half), G-51 (half), F#-51 (half), E-51 (half), D-51 (half), C-51 (half), B-52 (half), A-52 (half), G-52 (half), F#-52 (half), E-52 (half), D-52 (half), C-52 (half), B-53 (half), A-53 (half), G-53 (half), F#-53 (half), E-53 (half), D-53 (half), C-53 (half), B-54 (half), A-54 (half), G-54 (half), F#-54 (half), E-54 (half), D-54 (half), C-54 (half), B-55 (half), A-55 (half), G-55 (half), F#-55 (half), E-55 (half), D-55 (half), C-55 (half), B-56 (half), A-56 (half), G-56 (half), F#-56 (half), E-56 (half), D-56 (half), C-56 (half), B-57 (half), A-57 (half), G-57 (half), F#-57 (half), E-57 (half), D-57 (half), C-57 (half), B-58 (half), A-58 (half), G-58 (half), F#-58 (half), E-58 (half), D-58 (half), C-58 (half), B-59 (half), A-59 (half), G-59 (half), F#-59 (half), E-59 (half), D-59 (half), C-59 (half), B-60 (half), A-60 (half), G-60 (half), F#-60 (half), E-60 (half), D-60 (half), C-60 (half), B-61 (half), A-61 (half), G-61 (half), F#-61 (half), E-61 (half), D-61 (half), C-61 (half), B-62 (half), A-62 (half), G-62 (half), F#-62 (half), E-62 (half), D-62 (half), C-62 (half), B-63 (half), A-63 (half), G-63 (half), F#-63 (half), E-63 (half), D-63 (half), C-63 (half), B-64 (half), A-64 (half), G-64 (half), F#-64 (half), E-64 (half), D-64 (half), C-64 (half), B-65 (half), A-65 (half), G-65 (half), F#-65 (half), E-65 (half), D-65 (half), C-65 (half), B-66 (half), A-66 (half), G-66 (half), F#-66 (half), E-66 (half), D-66 (half), C-66 (half), B-67 (half), A-67 (half), G-67 (half), F#-67 (half), E-67 (half), D-67 (half), C-67 (half), B-68 (half), A-68 (half), G-68 (half), F#-68 (half), E-68 (half), D-68 (half), C-68 (half), B-69 (half), A-69 (half), G-69 (half), F#-69 (half), E-69 (half), D-69 (half), C-69 (half), B-70 (half), A-70 (half), G-70 (half), F#-70 (half), E-70 (half), D-70 (half), C-70 (half), B-71 (half), A-71 (half), G-71 (half), F#-71 (half), E-71 (half), D-71 (half), C-71 (half), B-72 (half), A-72 (half), G-72 (half), F#-72 (half), E-72 (half), D-72 (half), C-72 (half), B-73 (half), A-73 (half), G-73 (half), F#-73 (half), E-73 (half), D-73 (half), C-73 (half), B-74 (half), A-74 (half), G-74 (half), F#-74 (half), E-74 (half), D-74 (half), C-74 (half), B-75 (half), A-75 (half), G-75 (half), F#-75 (half), E-75 (half), D-75 (half), C-75 (half), B-76 (half), A-76 (half), G-76 (half), F#-76 (half), E-76 (half), D-76 (half), C-76 (half), B-77 (half), A-77 (half), G-77 (half), F#-77 (half), E-77 (half), D-77 (half), C-77 (half), B-78 (half), A-78 (half), G-78 (half), F#-78 (half), E-78 (half),

301

[illegible]

311

The bass line is written on a single staff in bass clef. It begins with a series of eighth notes: G2, A2, B2, C3, D3, E3, F3, G3. This is followed by a half note G3, then a half note A3 with a sharp sign (#). The next half note is B3, also with a sharp sign (#). This is followed by a half note C4, then a half note D4 with a sharp sign (#). The line continues with a half note E4, then a half note F4 with a sharp sign (#). The final half note is G4. The piece concludes with a whole note G4, followed by a whole rest.

Andante

13

*rall.*

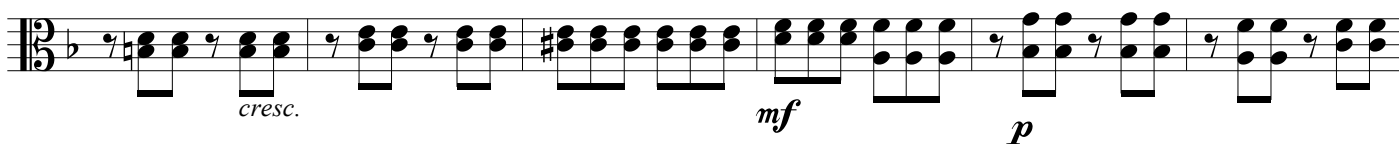
334



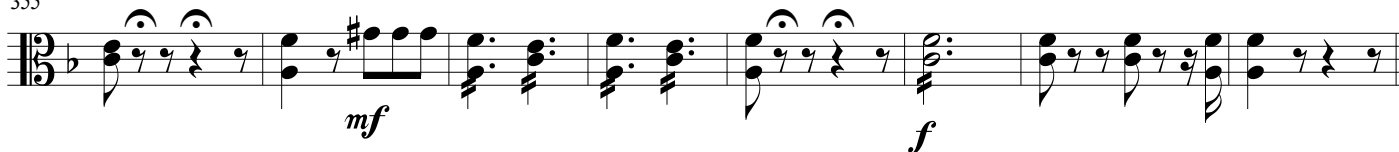
341



349



355



Andante

14

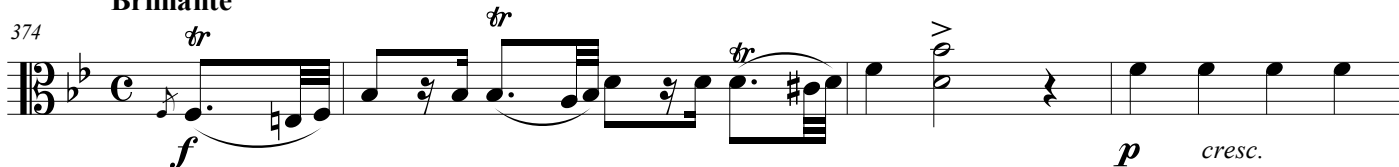


368

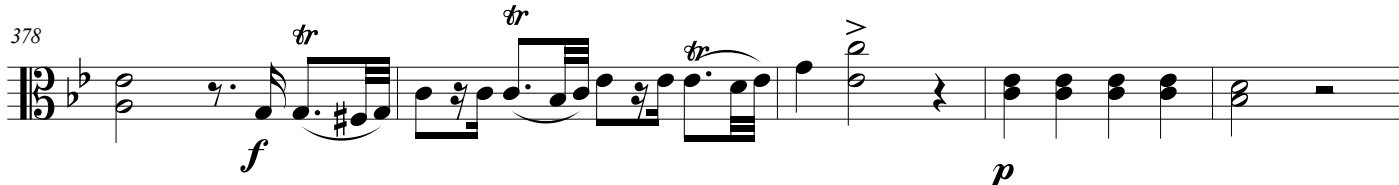


Brilhante

374



378



383



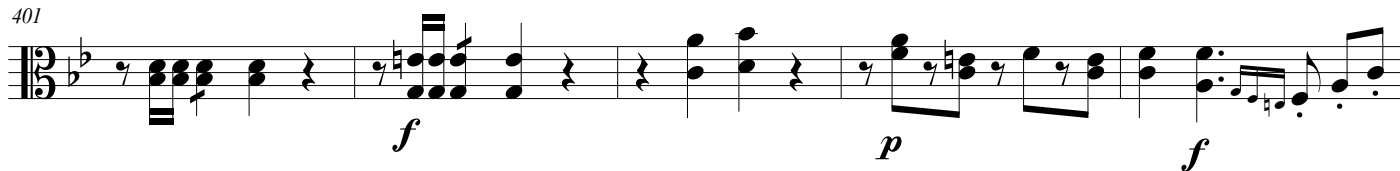
389



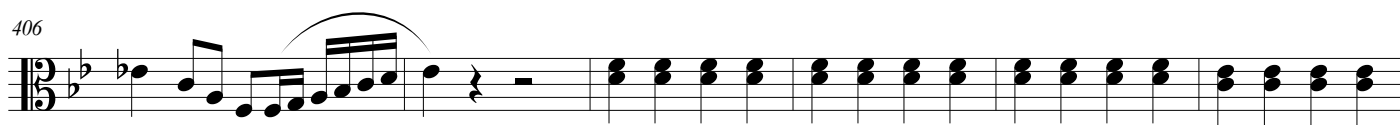
396



401



406



412



418



424

