

Violoncello

# La Boheme Suite No. 2

Puccini/Johnson

**Allegro vivace**

Violoncello score for La Boheme Suite No. 2, measures 1-42. The score is written in bass clef with a key signature of three flats (B-flat, E-flat, A-flat) and a 2/4 time signature. The tempo is marked **Allegro vivace**. The score includes various dynamics, articulations, and performance instructions.

Measures 1-8: **ff**, **mf legato**, **rit.**, **Tempo**, **rall.**

Measure 9: **pizz.**, **f**

Measures 10-13: **1 Tempo**, **pizz.**, **arco**, **mf**, **cresc.**

Measures 14-18: **Vivo**, **mf**, **pp**, **pizz.**, **arco**, **mf**

Measures 19-28: **sfz**, **pp**, **div.**, **arco**, **mf**

Measures 29-36: **3**, **mutes**, **pp**

Measures 37-41: **rit.**, **molto rall.**, **3**, **dim.**

48 **2 Andante lento** *p*

60 *pp* *rall.* **3 Andante calmo** *rit.* *div. a 3* *pp* *Tempo*

66 *pizz.* *rall.* **2** *A tempo* *arco* *div.* *pp*

72 **Lentamente** *pp* *pizz.* **4 Allegretto moderato** *f*

82 *pizz.* *poco rall.* *A tempo* **2** **4** *pp* *f*

92 *pizz.* *poco rall.* **5 Andante sostenuto molto** *arco* *pp* *cresc. poco a poco*

99 *ff* *poco allarg.*

104 *rall.* **3** *div.* *p*

111 *pizz.* **Tempo, ma calmo** *arco* *mutes* *senza pizz.* *pp* *p*

118 **6** **Allegretto giocoso**  
arco  
*f* *mf* *cresc.* *pizz.* *p* *f*

126  
*p* *ff* *f* **col legno**

135  
*cresc.* *f* **normale**

**Più mosso**  
141 **7** *pizz.* *arco*

149 *pizz.* *arco* *cresc.*

156 *pizz.* *ff*

162 **8** *col legno* *pizz.* *f*

169  
*pp*

174 9 pizz. *pp* *pp*

182 *pp* 5

191 3 pizz. *p*

199 2 pizz. *p*

207 rall. Tempo arco *p* *f*

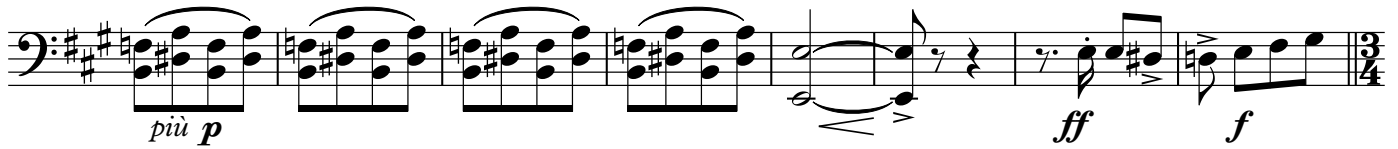
216 10 pizz. *p* *mf*

224 arco *f* *p*

233 allargando *cresc.* *f*

243 rall. Tempo div. *p* *dim.*

250



258

262 **rall.**

pizz.

11

**Tempo di Valzer lento**267 **quasi rit. A tempo quasi rit. A tempo**

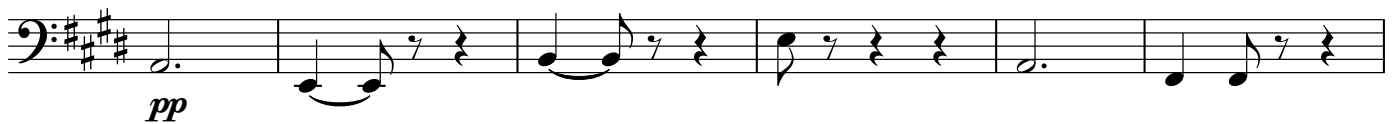
274

**allargano****A tempo**

arco



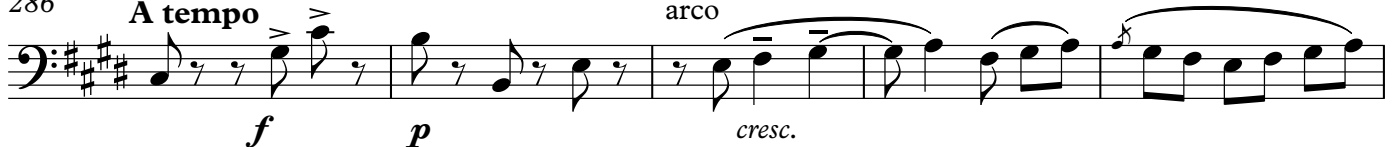
280

**rit. molto****A tempo****rall. molto**  
pizz.

286

**A tempo****poco rall.**

12

**A tempo**  
arco

291

**rit. molto**

pizz.



295 arco 13

*mf* 3 3 3 3 3

299 quasi rit. Tempo quasi rit. Tempo

306 pizz. arco

*cresc.* *f* *p* *mp*

312 animato

*pp*

319 allarg. Poco animato 14 pizz.

*p* *pp*

325 poco rall. Tempo arco

*ff* *p*

330 poco rall. A tempo ed incalz. pizz. arco

*mf* *f* *p* *cresc.* *f* *p*

336 pizz. 15 arco

*pp* *pp*

340 pizz. 2 arco

*f* *f* 6 6

346 *poco rit.* *Tempo* *poco rit.* *Tempo*  
*p*

351 *poco allarg.*  
*f p*

357 **16** *A tempo* *allargando*  
*fff*

360 *Meno mosso* *pizz.*  
*ppp*

366 *rit.* **17** *Allegro (alla marcia)* *arco* **18**  
*ff* <sup>3</sup>

388 **18**  
*p*

400 *pizz.*  
*mf* *p*

411 *arco*  
*f* *ff* *mf*

419 **19**

423 *pp* *pp*

433 pizz. arco pizz. arco **2**  
*f* *ff* *ff*

444 pizz. **20** **18** **21** arco *ff*

467 **19** **22** **2** *ff*

492 **allarg. e sostenendo**  
*ff*