

O Salutaris

H. J. Tobby

Andante **9** *a tempo*

p O Sa - lu - ta - ris, sa - lu - ta - ris hos - ti - a quæ cæ - li
dolce

15 *rall.* *a tempo*

pan - dis quæ cæ - li pan - dis os - ti - um. **p** O Sa - lu - ta - ris, sa - lu - ta - ris —
dolce

21

hos - ti - a quæ cæ - li pan - dis quæ cæ - li pan - dis os - ti - um. **mf** Bel - la pre - munt,
rall.

27

bel - la pre - munt hos - ti - li - a da ro - bur da ro - bur fer au - xi - li - um.

34 *a tempo*

Bel - la pre - munt bel - la pre - munt hos - ti - li - a da ro - bur da ro - bur —

40 *a tempo* **2**

da ro - bur fer — au - xi - li - um. **p** O Sa - lu - ta - ris, sa - lu - ta - ris —
dolce

47 *rall.* *a tempo*

hos - ti - a quæ cæ - li pan - dis quæ cæ - li pan - dis os - ti - um. **p** O Sa - lu -
dolce

53

ta - ris, sa - lu - ta - ris hos - ti - a quæ cæ - li pan - dis quæ cæ - li pan - dis os - ti -

59 **4**

um. **p** O Sa - lu - ta - ris hos - ti - a. *morrendo*

O Salutaris

H. J. Tobby

Andante

p

6

p

rall.

a tempo

11

17

p

rall.

a tempo

21

26

p

32

p

rall.

a tempo

36

rall.

41 *8va*

p

44 *a tempo*

p

50 *rall.* *a tempo*

p

54

59 *p* 3 3

63 *pp* *morrendo*

The image displays a musical score for the hymn 'O Salutaris' in G major, 3/4 time. It consists of six staves of music. The first staff (measures 41-43) features a melodic line with a trill and a grace note, marked with a piano (*p*) dynamic and an 8va octave shift. The second staff (measures 44-49) continues the melody with a trill and a grace note, marked with a piano (*p*) dynamic and an *a tempo* marking. The third staff (measures 50-53) includes a trill and a grace note, marked with a piano (*p*) dynamic and an *a tempo* marking. The fourth staff (measures 54-58) continues the melody with a trill and a grace note. The fifth staff (measures 59-62) features a trill and a grace note, marked with a piano (*p*) dynamic. The sixth staff (measures 63-65) concludes the piece with a trill and a grace note, marked with a pianissimo (*pp*) dynamic and a *morrendo* marking.

O Salutaris

H. J. Tobby

Andante

p

6

rall.

a tempo

p

11

17

rall.

a tempo

p

23

p

28

rall.

34

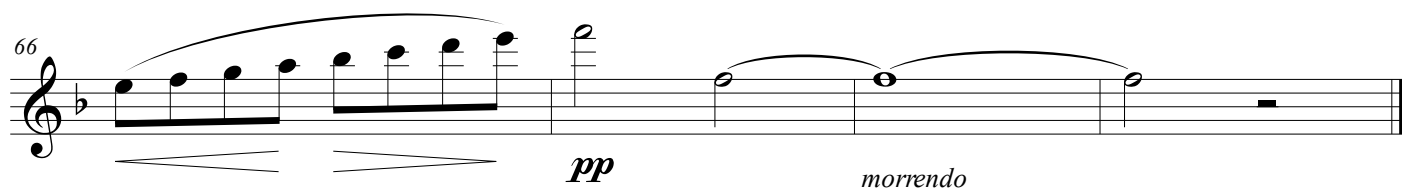
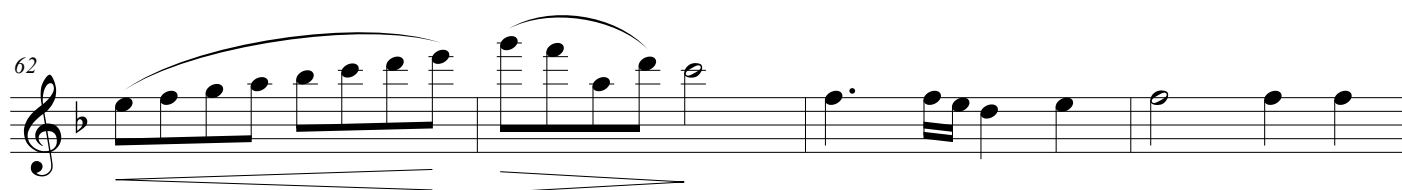
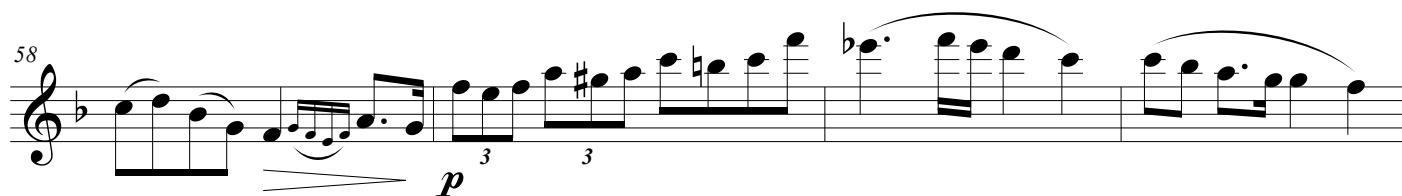
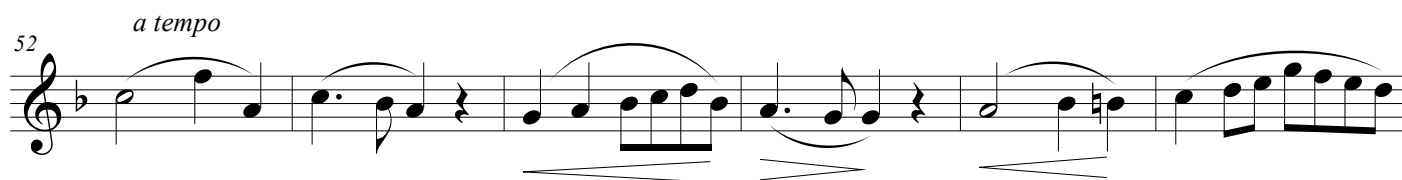
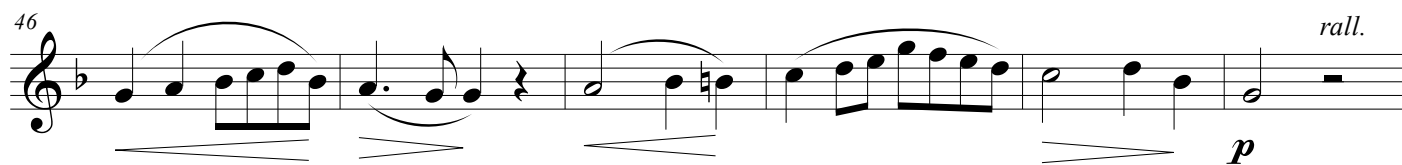
a tempo

40

a tempo

p

2



O Salutaris

H. J. Tobby

Andante

p

6 *rall.* *a tempo* *p*

11 *p*

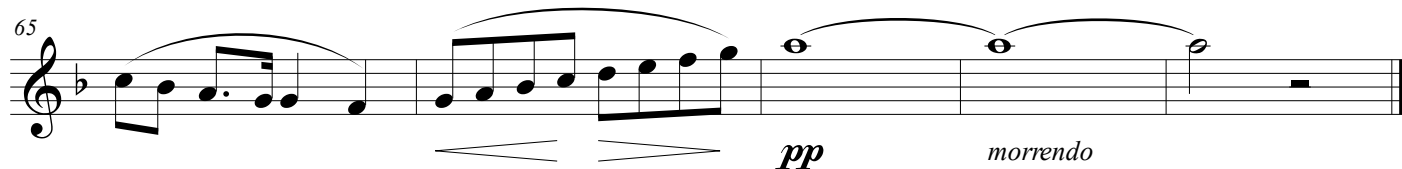
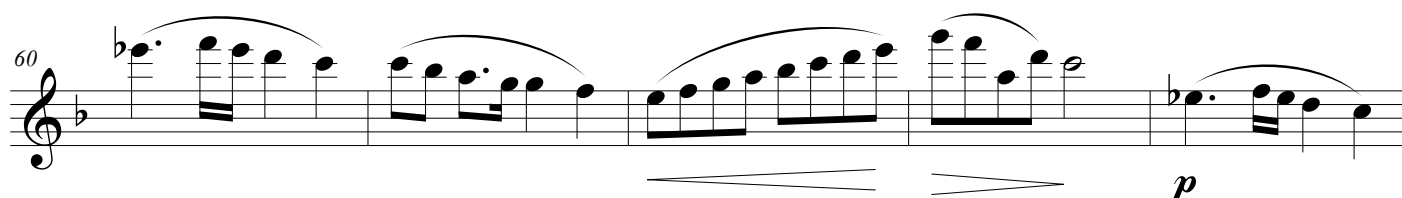
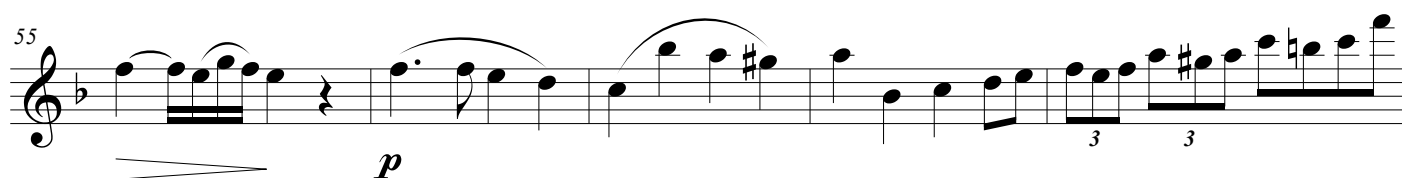
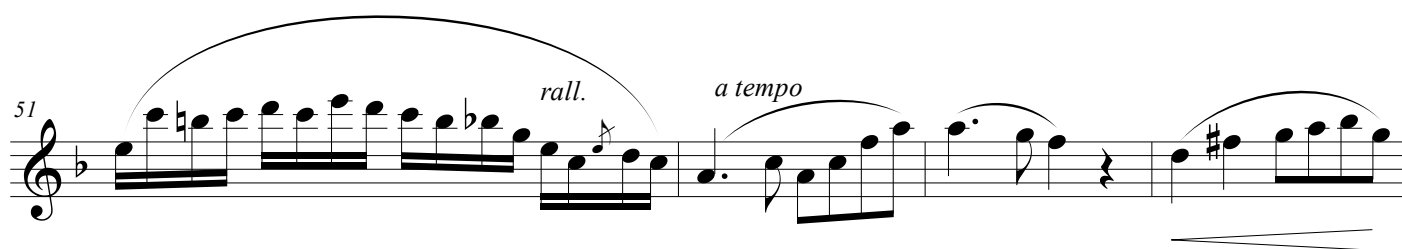
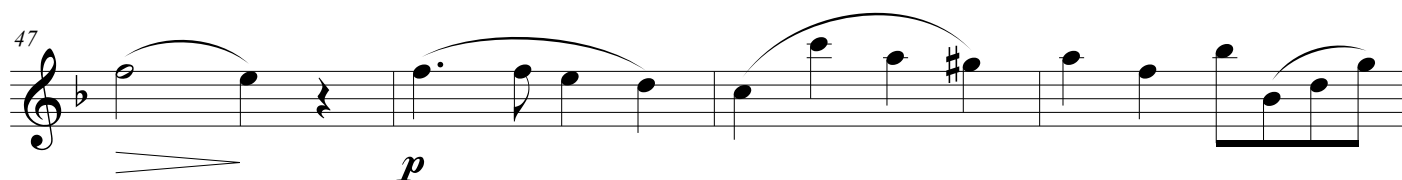
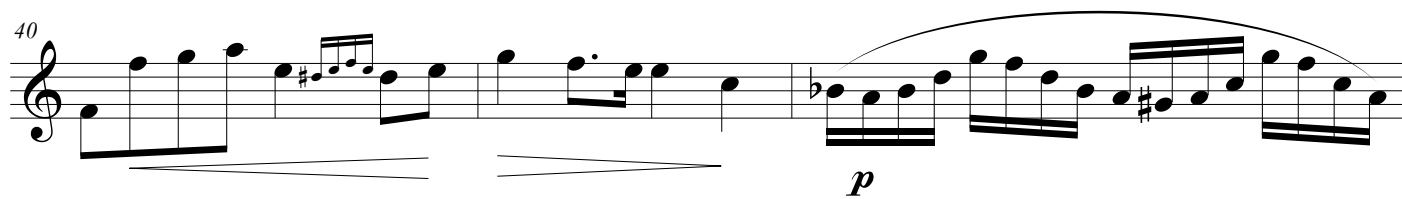
17 *rall.* *a tempo* *p*

21 *p*

26 *p*

31 *rall.* *a tempo* *p*

35 *p*



O Salutaris

H. J. Tobby

Andante

p

5 *rall.*

10 *a tempo*

p

15 *rall. a tempo*

20

25 *p*

30 *rall. a tempo*

p

35

40 *rall. a tempo*

p

This musical staff contains measures 40 through 44. It begins with a treble clef and a key signature of one flat (B-flat). Measures 40-42 feature eighth-note patterns with slurs. Measure 43 contains a whole note chord (B-flat and D-flat) followed by a whole rest. Measure 44 starts with a half note B-flat, followed by a half note D-flat, and ends with a half note E-flat. A dynamic marking of *p* (piano) is placed below the staff at the start of measure 44.

45

This musical staff contains measures 45 through 49. It continues the eighth-note patterns from the previous staff. Measure 46 has a sharp sign (#) above the eighth note. Measure 47 has a sharp sign (#) above the eighth note. Measure 48 has a sharp sign (#) above the eighth note. Measure 49 has a sharp sign (#) above the eighth note.

50 *rall. a tempo*

p

This musical staff contains measures 50 through 54. It continues the eighth-note patterns. Measure 51 has a sharp sign (#) above the eighth note. Measure 52 has a sharp sign (#) above the eighth note. Measure 53 has a sharp sign (#) above the eighth note. Measure 54 has a sharp sign (#) above the eighth note. A dynamic marking of *p* (piano) is placed below the staff at the start of measure 50.

55

This musical staff contains measures 55 through 59. It continues the eighth-note patterns. Measure 56 has a sharp sign (#) above the eighth note. Measure 57 has a sharp sign (#) above the eighth note. Measure 58 has a sharp sign (#) above the eighth note. Measure 59 has a sharp sign (#) above the eighth note.

60

pp *morrendo*

This musical staff contains measures 60 through 64. It begins with a treble clef and a key signature of one flat (B-flat). Measures 60-62 feature eighth-note patterns with slurs. Measure 63 contains a whole note chord (B-flat and D-flat) followed by a whole rest. Measure 64 starts with a half note B-flat, followed by a half note D-flat, and ends with a half note E-flat. A dynamic marking of *pp* (pianissimo) is placed below the staff at the start of measure 60, and a *morrendo* marking is placed below the staff at the start of measure 64.

O Salutaris

H. J. Tobby

Andante

p

5 *rall.*

10 *a tempo*
p

15 *rall.* *a tempo*

20

25 *p*

30 *rall.* *a tempo*
p

35

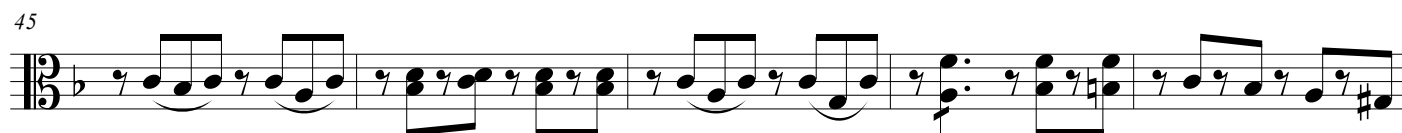
40

rall. *a tempo*

p



45



50

rall. *a tempo*

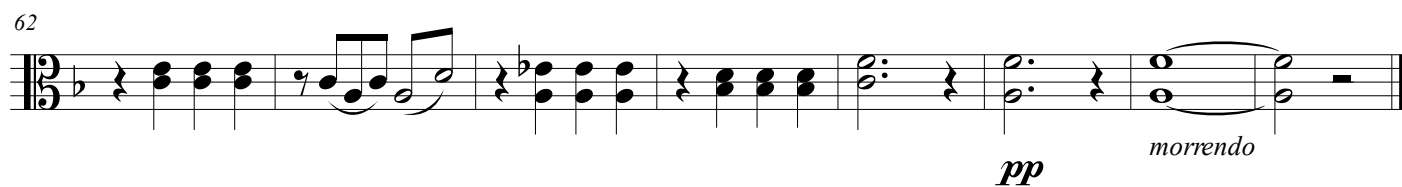


55



62

pp *morrendo*



O Salutaris

H. J. Tobby

Andante

Musical score for Cello, O Salutaris, by H. J. Tobby. The score is in bass clef with a key signature of one flat (B-flat) and a common time signature (C). It consists of 64 measures across 10 staves. The tempo is marked *Andante*. The score includes various musical notations such as notes, rests, and dynamic markings. Dynamics include *p* (piano), *pp* (pianissimo), and *morrendo* (fading). Performance instructions include *rall.* (ritardando) and *a tempo*. There are also crescendo and decrescendo hairpins. The piece ends with a double bar line at measure 64.

O Salutaris

H. J. Tobby

Andante

p

7 *rall.* *a tempo*

p

14 *rall.* *a tempo*

p

21 *p* *p*

28 *rall.* *a tempo*

p

36 *p* *rall.*

44 *a tempo*

p *p* *p*

51 *rall.* *a tempo*

p

58

65 *pp* *morrendo*