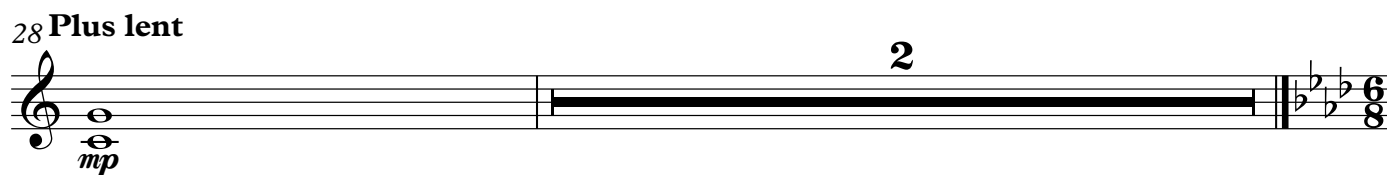
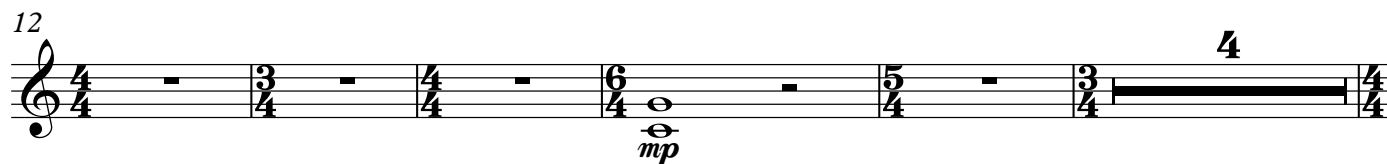
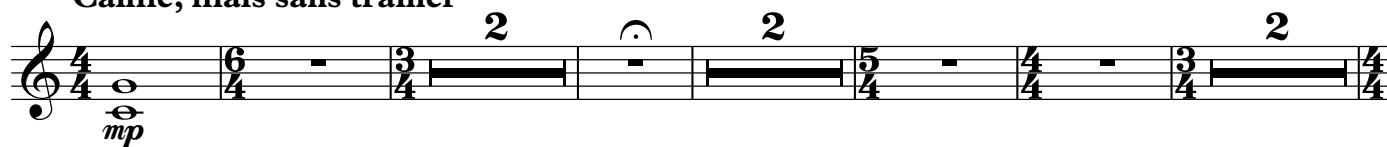


Chimes

# Paysages et marines

## 1. Sur la Falaise

Calme, mais sans trainer



## 2. Matin Calme



## 3. Promenade vers la Mer



## 4. Le Chant du Chevrier



## 5. Soir d'Ete

116 **Tres calme et presque adagio**

131

142 **Enserrant le Mouvt. (♩=♩) rall.**

*p*

## 6. Ceux qui s'en vont Pecher au Large, dans la Nuit

151 **Largement (♩=60)**

**TACET**

## 7. Soir d'Angoisses

196 **Non troppo adagio (♩=54)**

**TACET**

## 8. La Chanson des Pommiers en Fleurs

206 **Allegro moderato**

**TACET**

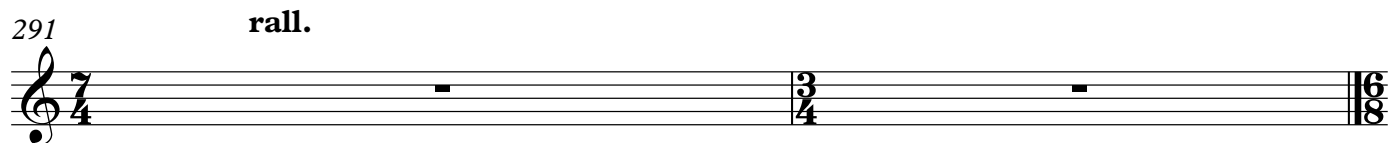
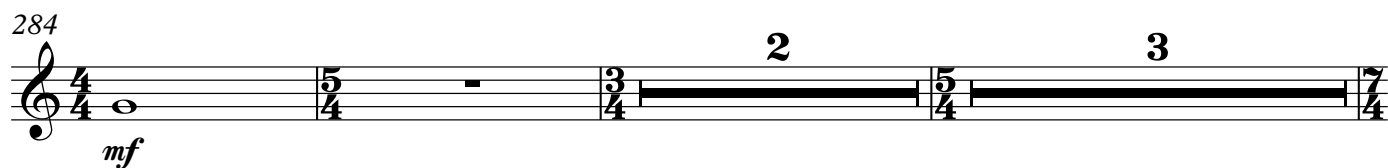
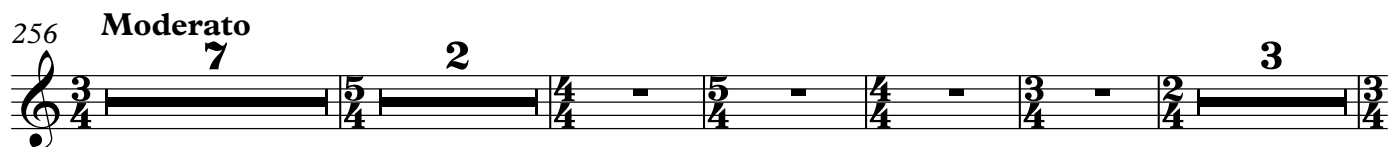
## 9. Paysage d'Octobre

233 **Adagio (♩=76)**

**TACET**

Chimes  
10. Chant de Pecheurs

3



11. Dans les Grands Champs



12. Poeme Virgilian

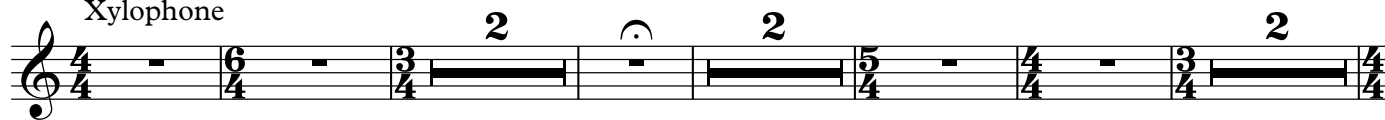


# Xylophone/ Glockenspiel Paysages et marines

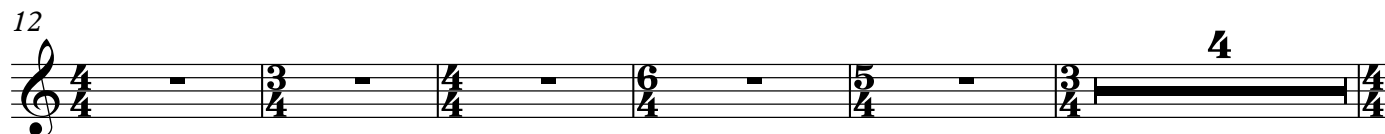
## 1. Sur la Falaise

**Calme, mais sans trainer**

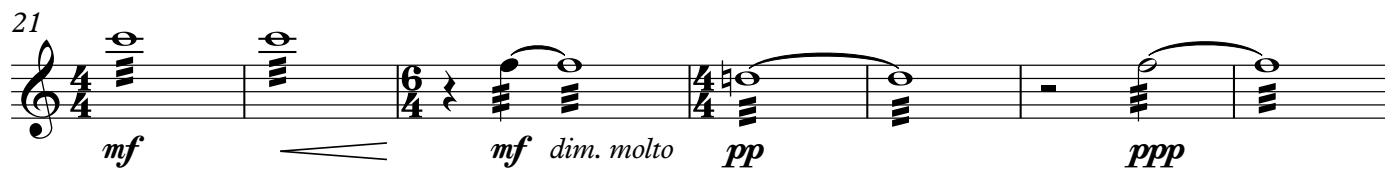
Xylophone



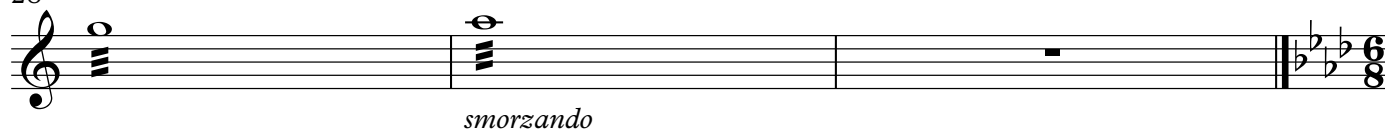
12



21



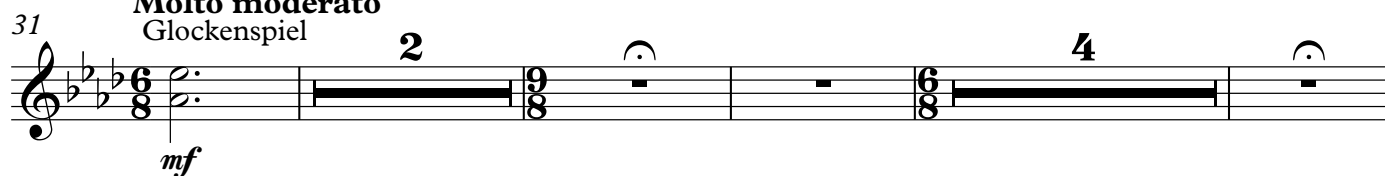
28 **Plus lent**



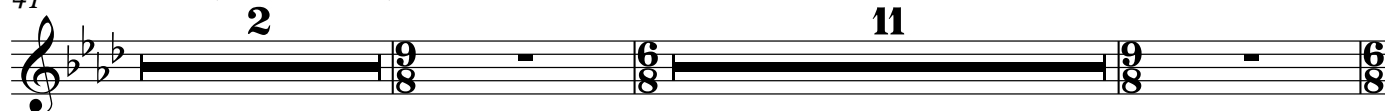
## 2. Matin Calme

**Molto moderato**

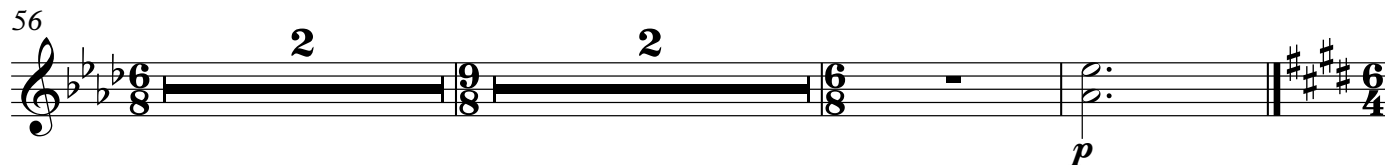
Glockenspiel



41 **Adagio (non troppo)**

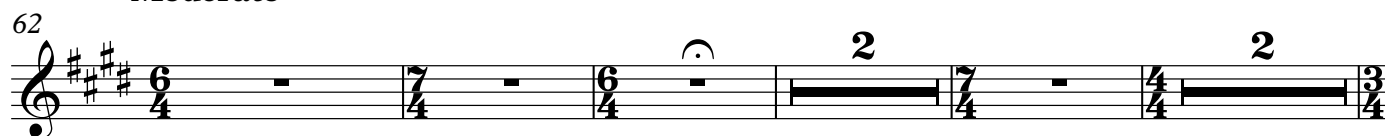


56



## 3. Promenade vers la Mer

**Moderato**



## Xylophone/ Glockenspiel

70

*mp*

76 **rall.** **Un peu plus lent**

The musical notation shows five measures. Measure 76 starts with a treble clef, key signature of three sharps (F#, C#, G#), and a 3/4 time signature. It contains a quarter note followed by two eighth notes. Measure 77 has a whole rest. Measure 78 changes to a 4/4 time signature and contains a whole rest. Measure 79 returns to a 3/4 time signature and contains a half note. Measure 80 changes to a 4/4 time signature and contains a half note. Above measure 80 are markings '2' and '3'. Above measure 81 are markings '3' and '3'. The piece ends with a double bar line at the end of measure 80.

88 **allarg.** **5** **Plus lent**

88 **allarg.** **5** **Plus lent**

#### 4. Le Chant du Chevrier

98 **Moderato**

**TACET**



A musical score for a single staff. The staff is a five-line treble clef staff. The key signature is one flat (B-flat), and the time signature is 6/4. The tempo marking "Moderato" is written above the staff. The word "TACET" is written in large, bold, black capital letters above the staff. The staff contains a single measure with a whole note, followed by a double bar line. The measure is filled with a solid black bar.

## 5. Soir d'Ete

116 **Tres calme et presque adagio**

3 5 5 5 5 7

134

2 3

*p*

144 **En serrant le Mouvt.** ( $\text{♩} = \text{♩}$ ) **rall.** ***P***

En serrant le Mouvt. ( $\text{♩} = \text{♩}$ ) **rall.** ***P***

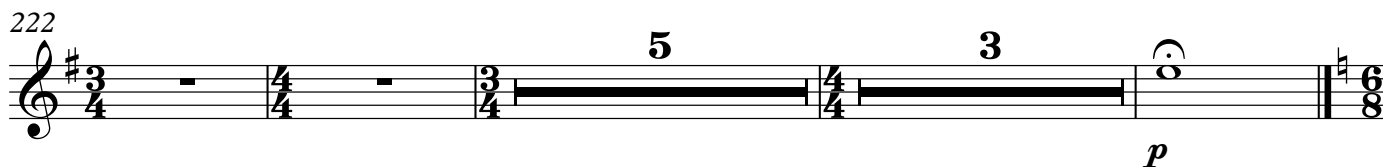
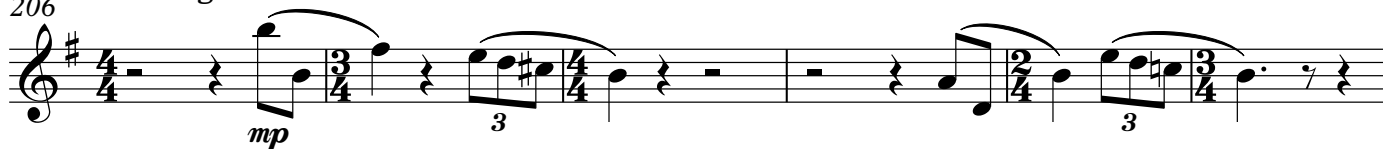
## 6. Ceux qui s'en vont Pecher au Large, dans la Nuit

151 **Largement** (♩=60) **TACET**

## 7. Soir d'Angoisses

196 **Non troppo adagio** (♩=54)

## 8. La Chanson des Pommiers en Fleurs

206 **Allegro moderato**

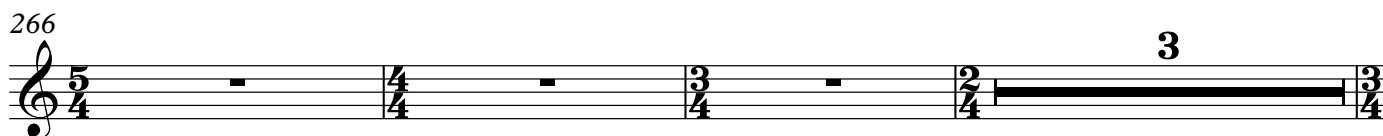
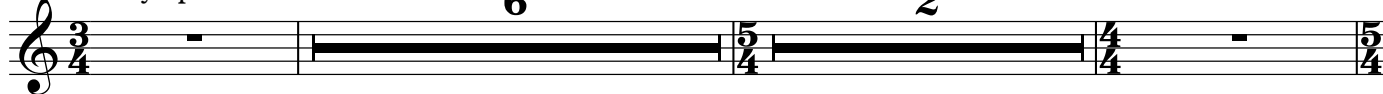
## 9. Paysage d'Octobre

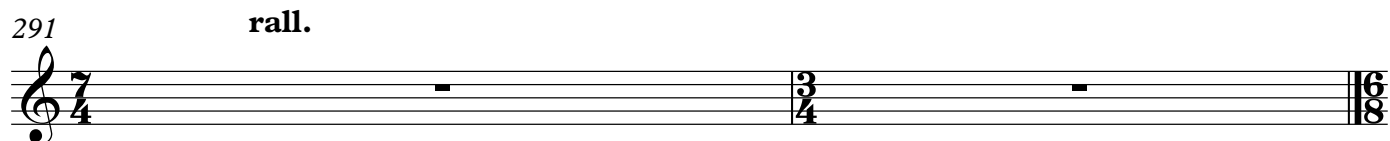
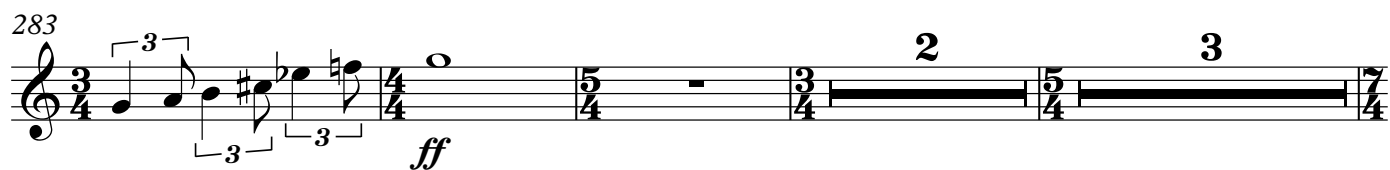
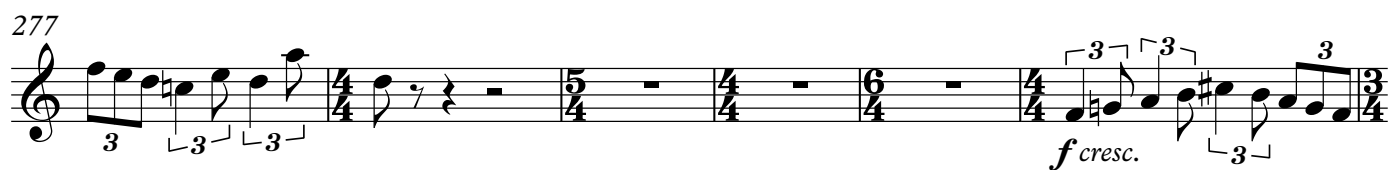
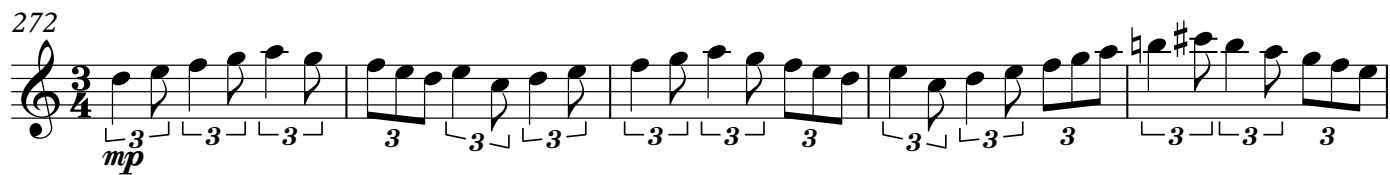
233 **Adagio** (♩=76)

## 10. Chant de Pecheurs

**Moderato**

256 Xylophone





# 11. Dans les Grands Champs



# 12. Poeme Virgilian

