

Piano Sonata No. 31 in A-Flat Major

Cello

1. Moderato cantabile molto espressivo

Ludwig van Beethoven

Joshua Choe

Moderato cantabile molto espressivo

p

8 *cresc.* *dim.* *p* *leggiermente*

14 *cresc.*

19 *p cresc.* *p cresc.*

27 *f* *sf*

30 *sf* *p* *p* *dolce*

35 *dim.* *cresc.*

42 *p*

Piano Sonata No. 31 in A-Flat Major

2

46

49

52

55

57

59

64

70

p

cresc.

dim.

p

cresc.

dim.

pp

p

cresc.

dolce

3

75

p *cresc.* *rit.* *a tempo*

81

p *cresc.* *p* *cresc.*

85

f *sf*

89

sf *sf* *p* *cresc.* *dim.* *p* *dolce*

94

cresc. *dim.*

101

p *dim.* *pp* *peggiamente*

107

cresc. *p*

113

p *cresc.* *f* *p*

2

Piano Sonata No. 31 in A-Flat Major

Cello

2. Allegro molto

Ludwig van Beethoven

Joshua Choe

Allegro molto

p *f* *sf* *f*

11 *sf* *sf* *sf* *p* *p*

22

33 *rit.* *ff* *a tempo* 1. 2.

42 *ff* *ff* *ff* *ff*

74 *sf* *sf* *f* *p* *dim.* 6

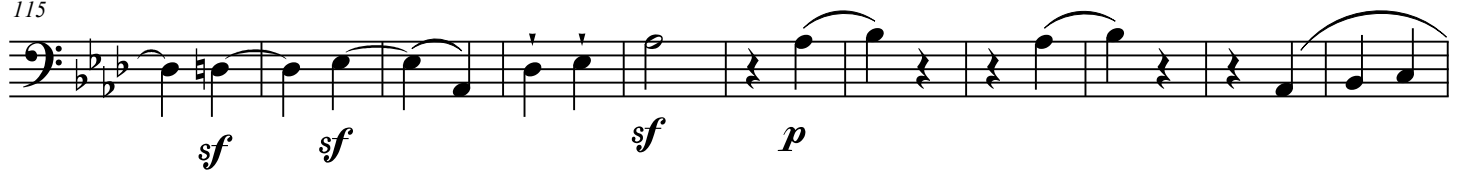
89 *p* *f*

104 *p* *rit.* *f* *a tempo* *f* *sf*

Piano Sonata No. 31 in A-Flat Major

2

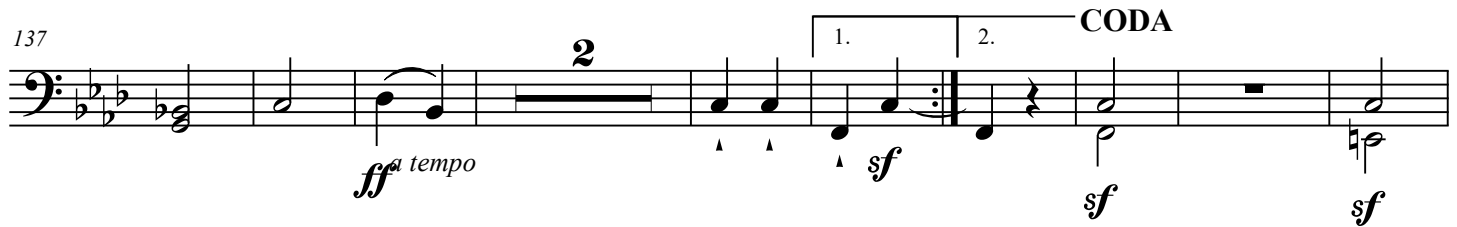
115



126



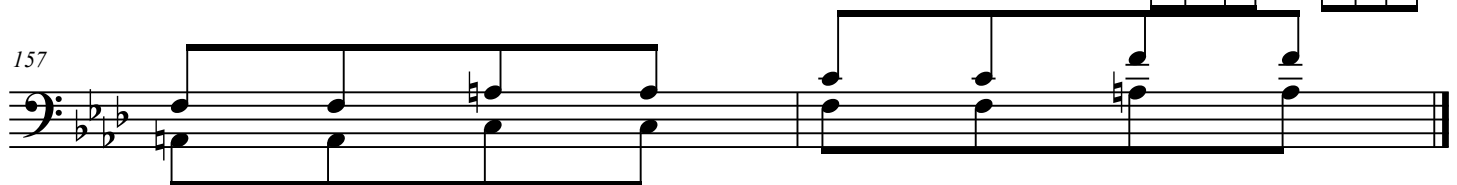
137



147



157



Piano Sonata No. 31 in A-Flat Major

Cello

3. Introduzione -- Fuga

Ludwig van Beethoven

Joshua Choe

Adagio ma non troppo

Recitativo piu adagio

pp

Andante Adagio

meno adagio

Adagio

Adagio ma non troppo

cresc. p cresc. dim. pp cresc. dim.

9

(Klagender Gesang)
Arioso dolente

p cresc. dim. p

12

p cresc. p

15

dim. p

18

cresc. dim.

21

p

24

p dim. pp

Piano Sonata No. 31 in A-Flat Major

2

FUGA *Allegro ma non troppo*

17

p cresc. f

50

dim. p

56

p

62

cresc.

68

f

74

ff

82

p f p

87

p

92 
101 
108 
L'istesso tempo di Arioso (Ermattet klagend)
115 Perdendo le forze, dolento 
118 
122 
125 
128 

Piano Sonata No. 31 in A-Flat Major

4

131 *Con sord.*

dim. *p* *cresc.*

135 **L'istesso tempo della Fuga**
poi a poi di nuovo vivente
Nach und nach wieder auflebend

dim. *p* *dim.* *pp*

147

153 **6**

pp *cresc.*

165 *Senza sord.* **Meno allegro. Etwas langsamer.**

p **4**

175 **5**

f *f*

186

189

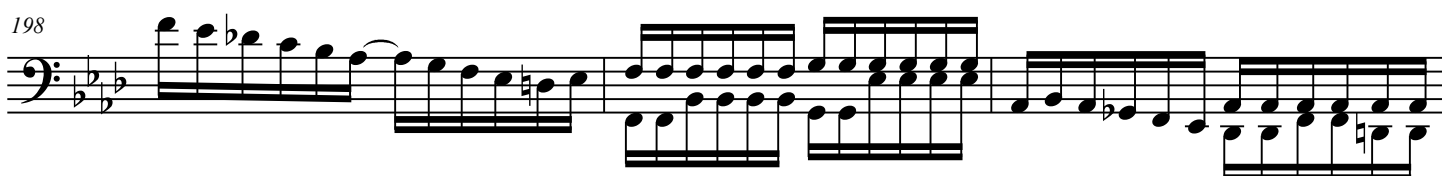
192



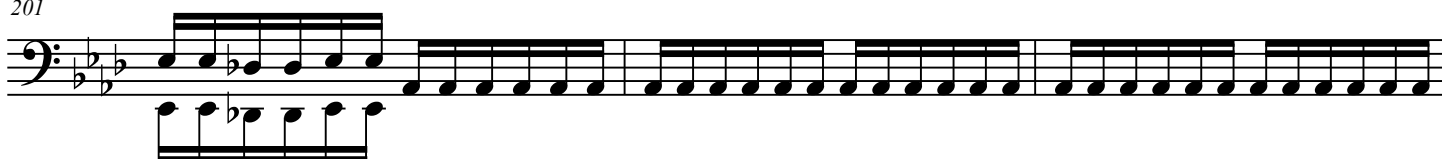
195



198



201



204



208



213

