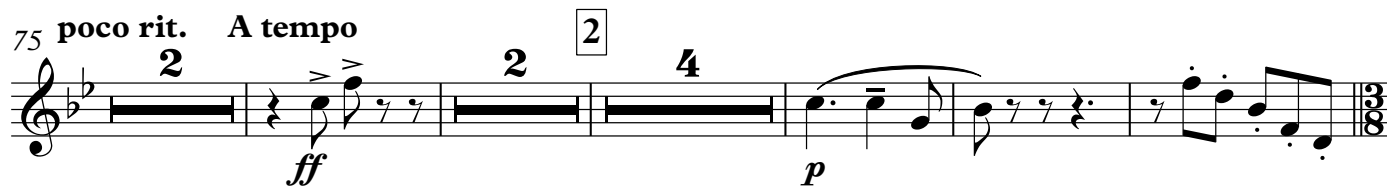
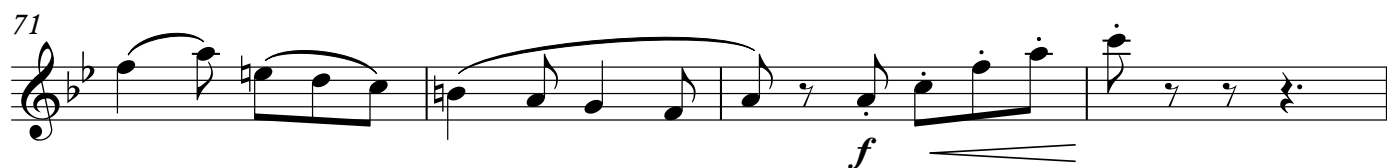
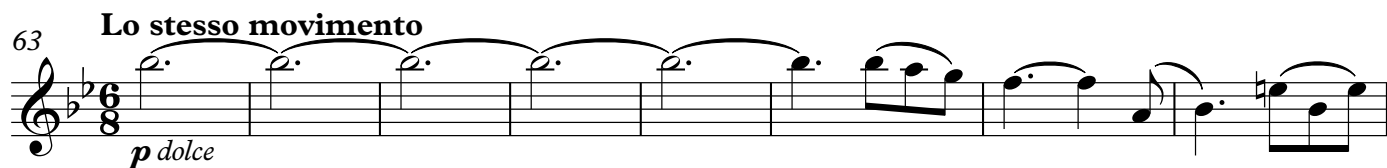
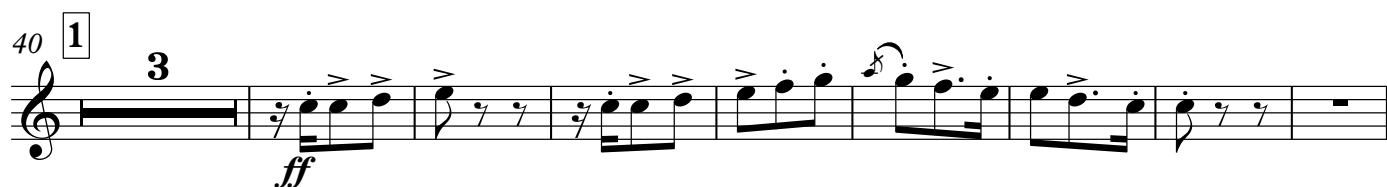
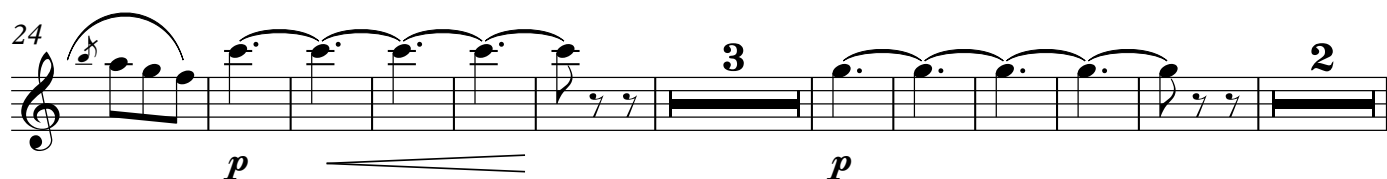
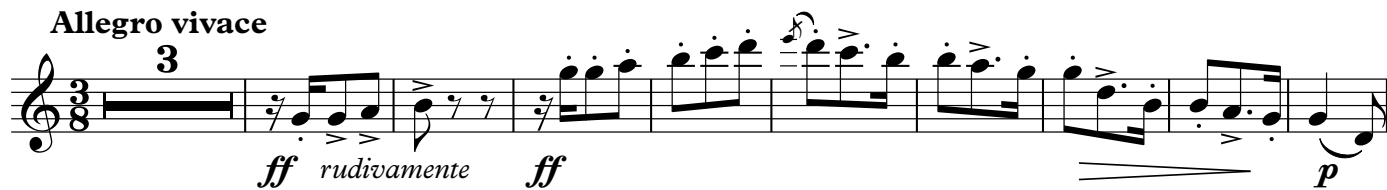


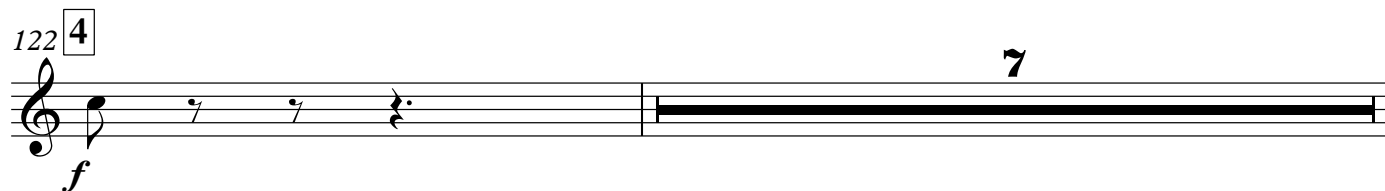
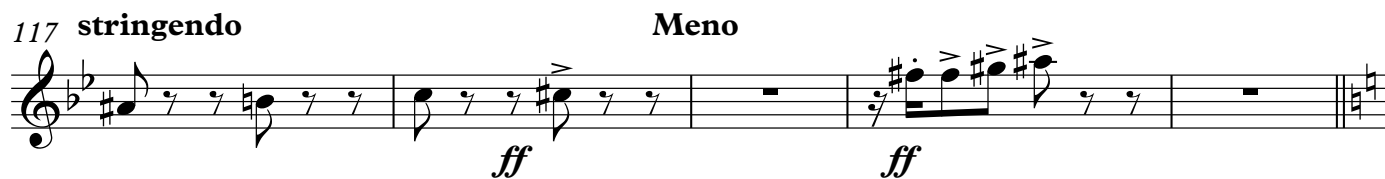
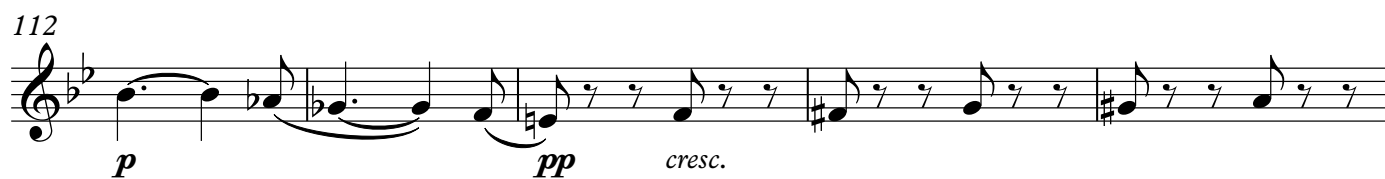
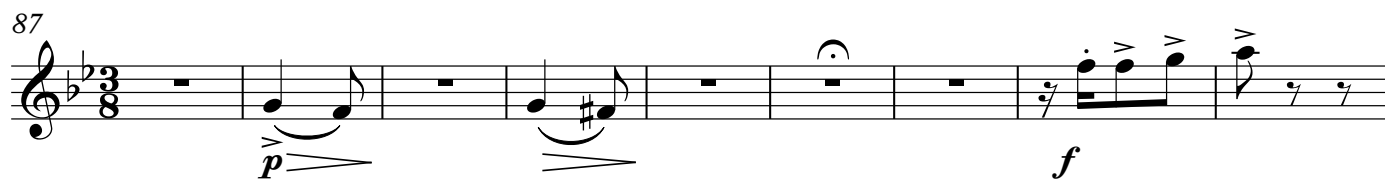
Oboe 1

La Boheme Suite No. 1

Puccini/Johnson

Allegro vivace





130 *p* *f* *p* *cresc.*

138 **5** *un poco sostenuto* **Tempo** *ff* *f*

146 *ff* 2 2 2

153 **6** *ff* *p*

159 *f* **13** *stringendo*

176 *p* 2 **7** 3

184 **8** *Allegro* *f* *ff*

191 *p*

198 *f* 2

206 9

213

219 10

229

239 11

252 **stringendo**

256 **A tempo** 12

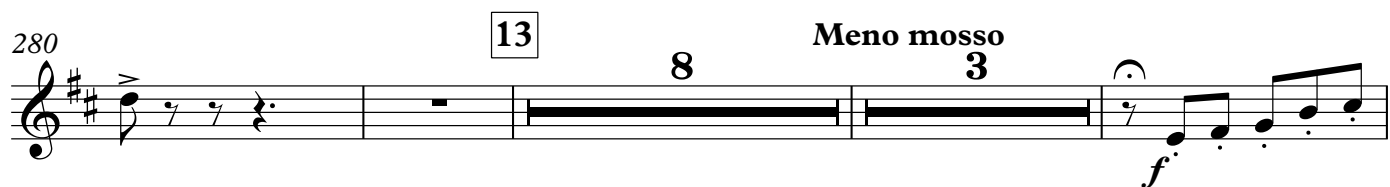
267 *f* *f p*



274



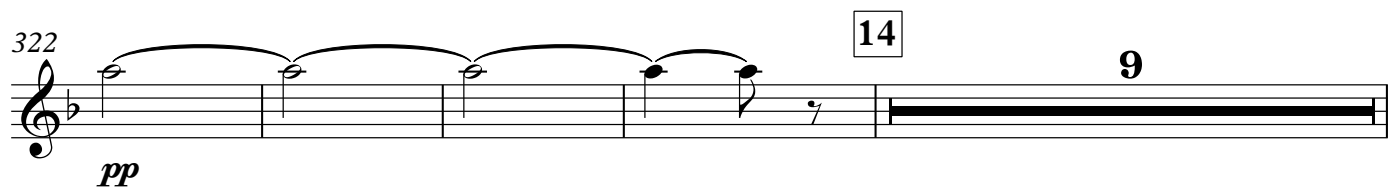
280 **13** **8** **Meno mosso** **3** *f*



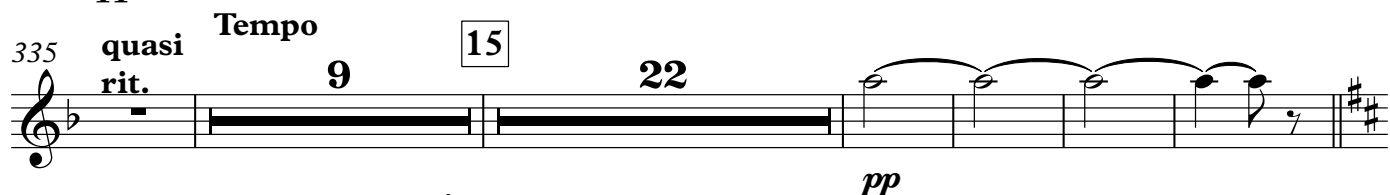
294 **poco rall.** *ff* *ff* **24**



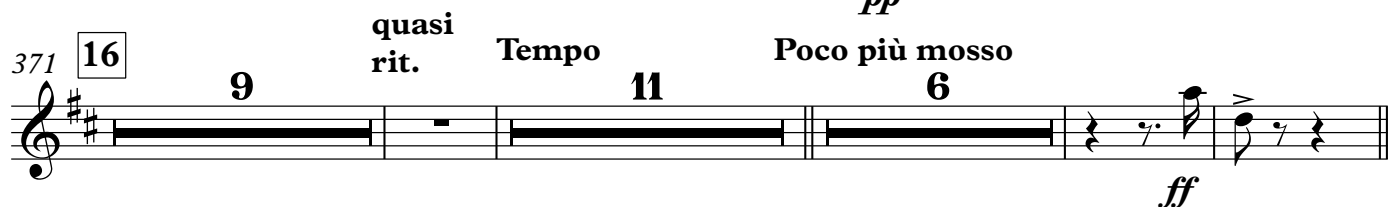
322 *pp* **14** **9**



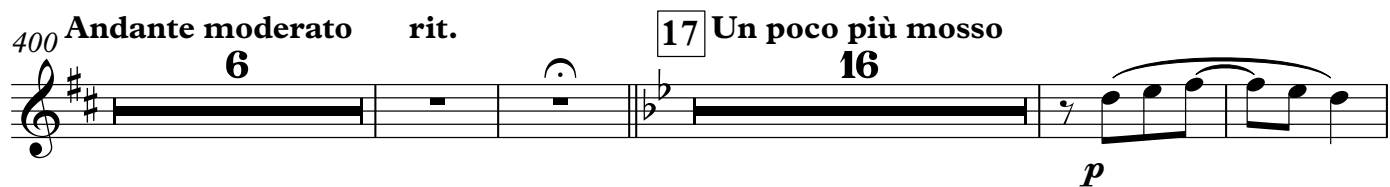
335 **quasi rit.** **Tempo** **9** **15** **22** *pp*



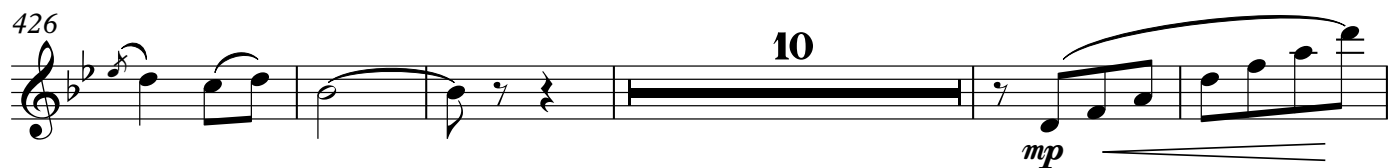
371 **16** **9** **quasi rit.** **Tempo** **11** **Poco più mosso** **6** *ff*



400 **Andante moderato** **rit.** **6** **17** **Un poco più mosso** **16** *p*



426 **10** *mp*



441 **18** **3** **7**
pp

456 **19**
p

462 **poco rit.** **A tempo** **poco rit.**
2 **8** **11**

483 **rall.** **4** **rall. molto** **2** **20** **Andantino affettuoso** **2**
mp

496 **4**

508 **rall.**

512 **Tempo** **5** **4** **3**
mf *mp*

525 **21** **Andante sostenuto** **3**
p *f*

534 **22** **Andante lento** **3**

537 *p* **allargando**

541 *ff* **rit. largamente** 6 **poco allargando** *f*

549 **23** *dim. pp cresc.* *f* **cresc.**

555 **24 allargando scilpre** 3 2 5 **Allegro focoso**

568 **25** *ff*

572

575 **26** *ff*

582 *f* *ff*

586 **27** *p*

591

f

596 28

p

600 **Lo stesso movimento**

p

607 **poco rit. Tempo**

pp

613

pp

618 29

f *pp* *f*

625

p

630

f

633 **poco rall.** **Tempo**

p *mf*

637 **30**

p

641 **stringendo** **31**

p

646

sfz *sfz* *p* *cresc.*

651

655 **32**

ff

662 **allarg. e sostenendo**

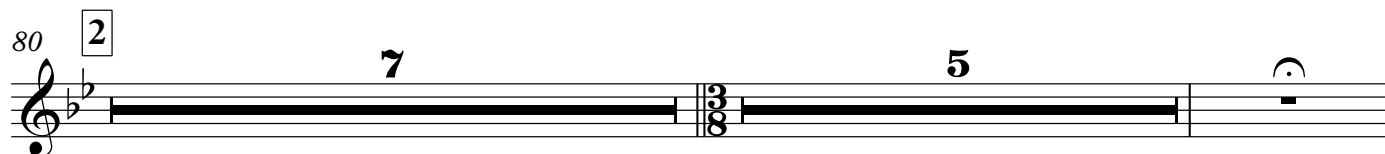
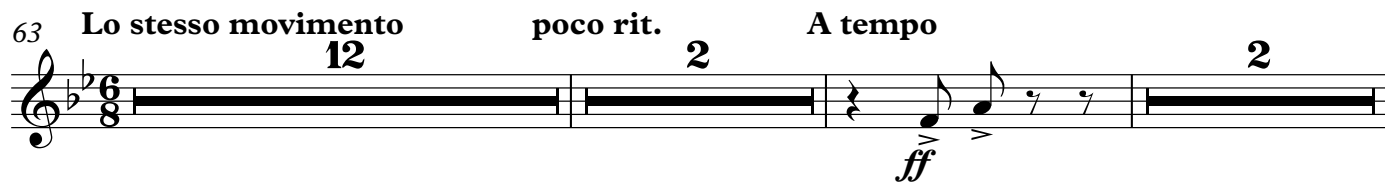
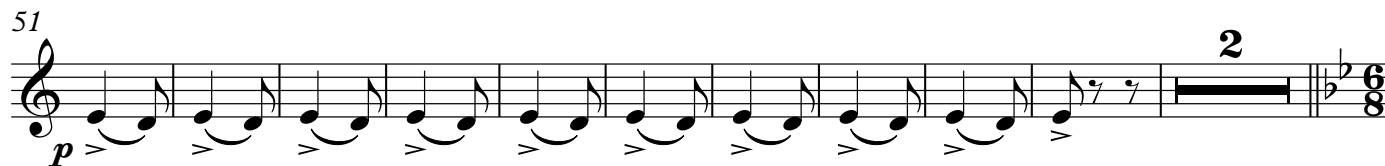
ff

Oboe 2

La Boheme Suite No. 1

Puccini/Johnson

Allegro vivace



93 3

f *p*

100 *p*

104

109 **rit.** *p* *pp* *cresc.*

115 **stringendo** *ff*

119 **Meno** 4 *ff* *f* *p* 7

131 *f* *p* *cresc.*

139 5 **un poco sostenuto** **Tempo** *ff* *f*

147 *ff* ² ₂ ² ₂

154 **6**

ff *p*

160

f *p*

13 **2**

180 **7** *stringendo* **8** *Allegro*

f *ff*

3

189

p

195

f

201

f

2

207 **9**

p

212

f

5

222 **10**

12

234 *f*

239 **11** *stringendo* **12** *f cresc.* *ff*

256 *A tempo* **12** *mf* *2* *2* *4* *f*

268 *f* *p*

274

280 **13** *Meno mosso* *8* *3* *f*

294 *poco rall.* *ff* *ff* **24**

322 **14** *pp* *9*

335 *quasi rit.* **15** *Tempo* *22* *pp*

371 **16** **9** **quasi rit.** **Tempo** **11** **Poco più mosso** **6** **ff**

400 **Andante moderato rit.** **6** **17** **Un poco più mosso** **16** **p**

426 **10** **mp**

441 **18** **3** **pp** **7**

456 **19** **p**

462 **poco rit.** **2** **A tempo** **8** **poco rit.** **11**

483 **rall.** **4** **rall. molto** **2** **20** **Andantino affettuoso** **19**

508 **rall.** **4** **Tempo** **5** **6** **mf** **>** **3/4**

525 **21** **Andante sostenuto** **2** **3/4**

527 **3**

534 **22** Andante lento **3** allargando *p* *f*

541 rit. largamente **6** poco allargando *ff* *f* **3** **3** **3** **3**

549 **23** *dim.* *pp* *cresc.* *f* **3**

555 **24** allargando **3** **2** Allegro focoso **5** *resc.*

568 **25** *ff*

572

575 **26** *ff*

582 *f* *ff*

586 27

p

591

f

596 28

600 **Lo stesso movimento**

p

607 **poco rit. Tempo**

2

616 29

pp *f*

622

pp *f* *p*

628

f

634 **poco rall.**

635 **Tempo** 30

641 **stringendo** 31 **2**

648

652

657 32 **ff**

662 **allarg. e sostenendo** **ff**

ff

English Horn

La Boheme Suite No. 1

Puccini/Johnson

Allegro vivace

39 1 23

63 **Lo stesso movimento** 11 poco rit. 2 A tempo 3

80 2

87 2

96 3 5 f 5

109 rit. 8 stringendo Meno f mf

122 4 16 5 un poco sostenuto 3

142 **Tempo** 12 6 18

172 *mf* *mf*

180 **7** *stringendo* **3** **8** *Allegro* **23**

207 **9** **15** **10** *mf*

226 **8**

239 **11** **13** *stringendo* **4** *A tempo* **3**

259 **12** **8** *f* **9**

280 **2** **13** **8** *Meno mosso* **3**

294 *poco rall.* **2** *ff* **23** *pp*

322 **14** **9**

335 **quasi rit.** **Tempo** 9 15 21

371 16 9 **quasi rit.** **Tempo** 11 **pp** **Poco più mosso** 6 **ff**

400 **Andante moderato** **rit.** 6 17 **Un poco più mosso** 33

441 18 15 19 6 **poco rit.** 2

464 **A tempo** 8 **poco rit.** 11 **rall.** 4

487 **rall. molto** 2 20 **Andantino affettuoso** 19 **rall.** 4

512 **Tempo** 5 6 3/4

525 21 **Andante sostenuto** 9 22 **Andante lento** 5

539 **allargando** **mf** **f** **ff** **rit.** **largamente** 4

546 *poco allargando*

549 23

mf > pp *cresc.* *f*

555 24 *allargando sempre* *rall.*

pp *pp*

561 **Allegro focoso**

5

569 25

ff

575 26

ff *f* *ff*

585 27

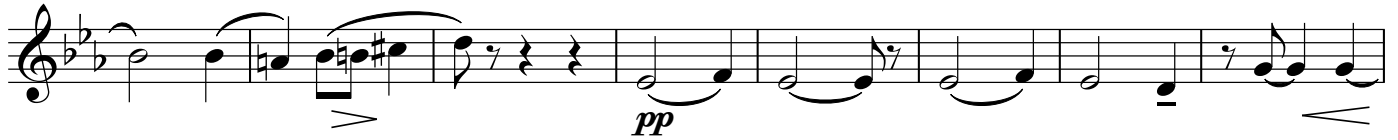
p

592 28

f

600 **Lo stesso movimento**

p < > < < < <

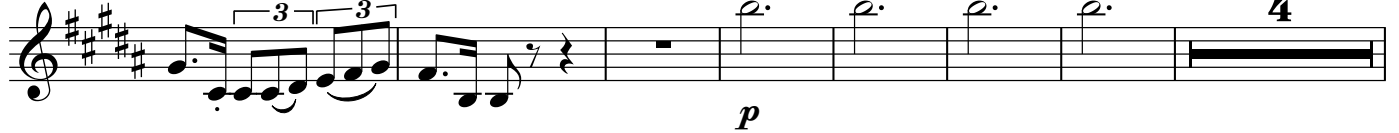
608 **poco rit.** Tempo

616

29



623



634

poco rall.

Tempo

30

641 **stringendo**

31

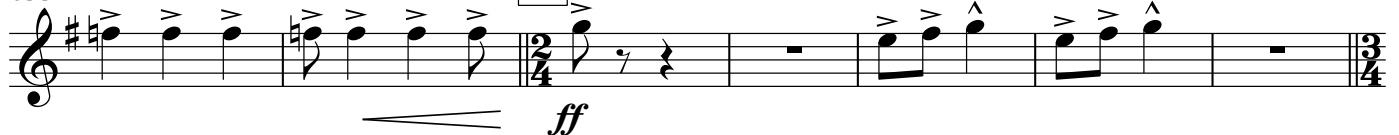


648



655

32

662 **allarg. e sostenendo**