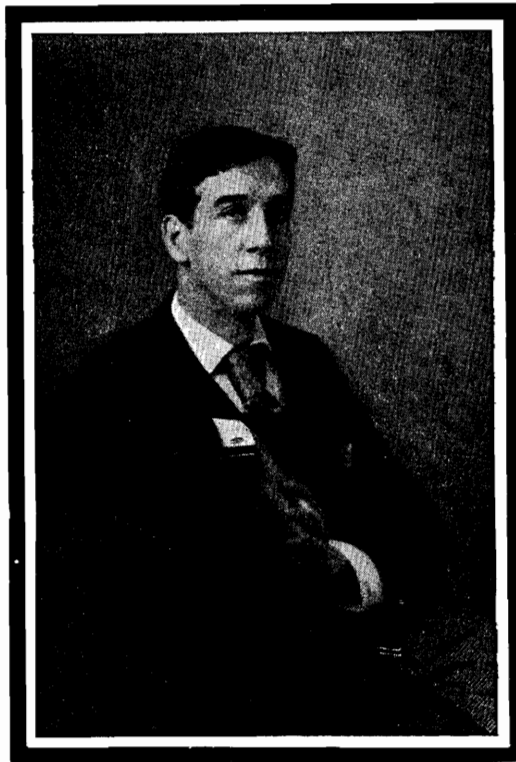


# ETHELBERT NEVIN

## Vocal Compositions

Songs with Piano

Album of collected Songs, (9) Two Keys, Complete . . . . .	n. 1.25
1. Autumn Sadness ( <i>Herbstgefühl</i> ); 2. April Garden ( <i>La Chanson des Lavandières</i> ); 3. 'Twas April; 4. Raft Song; 5. Before the Daybreak; 6. Rosebud, The ( <i>Hab' ein Röslein Dir Gebrochen</i> ); 7. Vase, The ( <i>Le Vase Brisé</i> ); 8. Remember Well ( <i>Rappelle-Toi</i> ); 9. An Old Song ( <i>Une Vieille Chanson</i> ).	
Airly Beacon, Op. 20, No. 4, Two Keys . . . . .	.50
April Garden ( <i>Chanson des Lavandières</i> ), Op. 5, No. 2, Two Keys . . . . .	.50
At Twilight, Op. 12, No. 5, Two Keys . . . . .	.50
Autumn Sadness ( <i>Herbstgefühl</i> ), Op. 5, No. 1, Two Keys . . . . .	.50
Beat upon Mine, little Heart, Op. 12, No. 2, Two Keys . . . . .	.50
Before the Daybreak, Op. 5, No. 5, Two Keys . . . . .	.50
Book of Songs, A (10), Op. 20, Two Keys, Complete . . . . .	n. 1.25
1. A Fair Good Morn; 2. Sleep, Little Tulip; 3. Ev'ry Night; 4. Airly Beacon; 5. When the Land was white with Moonlight; 6. A Song of Love; 7. Nocturne (Up to her chamber window); 8. Dites-moi (Tell me); 9. Orsola's Song ( <i>Chantez! la nuit sera brève</i> ); 10. In the Night ( <i>In der Nacht</i> ).	
Deep in a Rose's Glowing Heart, Op. 3, No. 1, Two Keys . . . . .	.40
Ev'ry Night, Op. 20, No. 3, Two Keys . . . . .	.30
Fair Good Morn, A, Op. 20, No. 1, Two Keys . . . . .	.50
In a Bower, Op. 12, No. 3, Two Keys . . . . .	.50
In the Night ( <i>In der Nacht</i> ), Op. 20, No. 10, Two Keys . . . . .	.60
Life ( <i>La Vie</i> ), Mezzo-sop. . . . .	.35
Life Lesson (There, Little Girl, Don't Cry) . . . . .	.50
Little Boy Blue, Op. 12, No. 4, Two Keys . . . . .	.60
Maiden, How Sweet ( <i>Mädel, wie blüht's</i> ), Op. 22, No. 2 . . . . .	.50
Merry, Merry Lark, Two Keys . . . . .	.40
Nocturne (Up to her Chamber Window), Op. 20, Two Keys . . . . .	.50
Oh, That We Two Were Maying, Op. 2, No. 8, Three Keys . . . . .	.60
Old Song, An ( <i>Une Vieille Chanson</i> ), Two Keys . . . . .	.50
One Spring Morning, Op. 3, No. 2, Two Keys . . . . .	.60
Orsola's Song, ( <i>Chantez! la nuit sera brève</i> ), Op. 20, No. 9, Two Keys . . . . .	.50
Raft Song, Op. 5, No. 4, Two Keys . . . . .	.50
Remember Well ( <i>Rappelle-Toi</i> ), Op. 17, No. 3, Two Keys . . . . .	.75
Rosary, The, Three Keys, . . . . .	.60



## Vocal Compositions—Continued

Rosebud, The ( <i>Hab' ein Röslein</i> ), Op. 17, No. 1, Two Keys . . . . .	.50
Sketch Book (Songs and Piano Pieces), Op. 2, Complete . . . . .	n. 1.25
2. 'Twas in the lovely Month of May ( <i>Im wunderschönen Monat Mai</i> ); 4. Thou'rt like unto a flower ( <i>Du bist wie eine Blume</i> ); 6. O let thy tears ( <i>Lehn' Deine Wang'</i> ); 8. Oh, That We Two were Maying; 10. Three Songs from R. L. Stevenson's "Child's Garden of Verses." 1. In Winter I get up at Night, II. Of Speckled Eggs the Birdie Sings, III. Dark-brown is the River; 11. The Night has a Thousand Eyes (Mixed Voices).	
Sleep, Little Tulip, Op. 20, No. 2, Two Keys . . . . .	.60
Song of Love, A, Op. 20, No. 6, Two Keys . . . . .	.50
Summer Day, Op. 12, No. 1, Two Keys . . . . .	.50
Tell Me ( <i>Dites-moi</i> ), Op. 20, No. 8, Two Keys . . . . .	.50
Thine my Greeting ( <i>Ti Saluto</i> ), Op. 20, Two Keys . . . . .	.50
Time Enough ( <i>Rechte Zeit</i> ), Op. 22, No. 1 . . . . .	.50
'Twas April, Op. 5, No. 3, Two Keys . . . . .	.50
Vase, The ( <i>Le Vase brisé</i> ), Op. 17, No. 3, Two Keys . . . . .	.50
When the Land was White with Moonlight, Op. 20, No. 5, Two Keys . . . . .	.50

## Piano Compositions

Two Hands	
Op. 2, A Sketch Book (Songs and Piano Pieces), complete, n. 1.25	
1. Gavotte . . . . .	
3. Love Song . . . . .	
5. Berceuse . . . . .	
7. Serenade . . . . .	
9. Valse Rhapsodie . . . . .	
Op. 2, No. 3, Love Song (from the Sketch Book) . . . . .	.50
Op. 6, No. 2, Country Dance (arranged from the Duet) . . . . .	.60
Op. 7, Four Pieces . . . . .	
1. Valzer Gentle . . . . .	.75
2. Slumber Song . . . . .	.60
3. Intermezzo . . . . .	.75
4. Song of the Brook . . . . .	.75

Two Hands	
Op. 13, Water Scenes . . . . . complete, n. 1.25	
1. Dragon Fly . . . . .	.60
2. Ophelia . . . . .	.60
3. Water Nymph . . . . .	.75
4. Narcissus . . . . .	.60
5. Barcarolle . . . . .	.90
Op. 16, In Arcady . . . . . complete, n. 1.25	
1. A Shepherd's Tale . . . . .	.50
2. Shepherds All and Maidens Fair . . . . .	.75
3. Lullaby . . . . .	.60
4. Tournament . . . . .	.75
Op. 18, Two Etudes . . . . .	
1. Romance . . . . .	.90
2. Scherzo . . . . .	1.00

Slumber Song, Op. 7, No. 2 (arranged for the organ by E. H. Lemare) .50

## Vocal Compositions

Songs with Accompaniment of Various Instruments

Deep in a Rose's Glowing Heart, Op. 3, Violin and Cello, Two Keys . . . . .	.50
Doris (A Pastorale), Violin and Cello, Two Keys . . . . .	.90
Doris (A Pastorale), Full Orchestra, Two Keys, rent, 2.00	
One Spring Morning, Violin and Cello, Two Keys . . . . .	.75
Oh, That We Two Were Maying (Ab), String Quintet (2 Vo., Va., Cello and Bass) . . . . .	1.25
Remember Well ( <i>Rappelle-Toi</i> ), Full Orchestra, . . . . . rent, 2.00	
Rosary, The, Large Orchestra . . . . .	1.00
Rosary, The, Small Orchestra . . . . .	.80
Rosary, The, Military Band . . . . .	1.00

## Vocal Duets

Oh, That We Two Were Maying, Op. 2, No. 8, Three Keys . . . . .	.60
String Quintet accompaniment (Ab) . . . . .	1.25

## Quartets & Choruses for Mixed Voices

A Song (from Love's Labor Lost) . . . . .	.15
Evening Song . . . . .	.12
May Day Dance (unison chorus, four-hand acc'pt). . . . .	.15
My Love . . . . .	.10
The Night has a thousand Eyes (Violin Obligato) . . . . .	.08
Wynken, Blynken and Nod (a Dutch Lullaby), Op. 9, Soprano solo; piano four-hand or orchestra acc'pt. . . . .	.40

## Quartets & Choruses for Female Voices

Doris (Violin and Cello Obligato) (3 parts) . . . . .	.25
The Night has a Thousand Eyes, Op. 2, No. 13 (Violin Obligato) (4 parts) . . . . .	.08
Wynken, Blynken and Nod, Sop. solo; piano four-hand or orchestra acc'pt (4 parts) . . . . .	.40

## Quartets & Choruses for Male Voices

The Night has a Thousand Eyes (Violin Obligato) . . . . .	.08
The Rhein and the Moselle . . . . .	.15
Wynken, Blynken and Nod, Sop. solo; piano four-hand or orchestra acc'pt . . . . .	.40

## Violin and Piano

Barcarolle . . . . .	.65
Habanera, Op. 8, No. 2 . . . . .	.75
Melody, Op. 8, No. 1 . . . . .	.60
Narcissus, Op. 13, No. 4 . . . . .	.60

## Orchestra

	Piano Part	Small Orchestra	Large Orchestra
Country Dance . . . . .	.30	1.00	1.50
Narcissus . . . . .	.25	.80	1.00
The Rosary (Cornet Solo) . . . . .	.20	.80	1.00
Tournament . . . . .	.30	1.00	1.50

## Band

Country Dance . . . . .	1.50
Narcissus . . . . .	1.00
The Rosary (Cornet Solo) . . . . .	1.00
Tournament . . . . .	1.50

Narcissus is also published for Cello and Piano; Cornet and Piano; Mandolin and Guitar, in various combinations



# Une Vieille Chanson.

(AN OLD SONG.)

Paroles de VICTOR HUGO.

ETHELBERT NEVIN.

Moderato assai.

Voice.

Piano.

*p*

*dolce.*

S'il est un char - mant ga - zon      Que le ciel ar - ro - se,  
If a love - ly lawn there be      Dewed with dia - mond show - ers,

Où brille en tou - - te sai - son      Quel - que fleur é -  
Where the gen - 'rous year, in fee,      Scat - ters dain - ty

clo - - se, OÙ lbn ceuille á plei - ne main  
dow - - ers: Lil - ies, jas - mine, col - - umbine,

*cantando.*

Lis, chère feuille et jas - min, Jen veux fai - re  
There in rich a - bun - dance shine! Fit for gen - tle

*cresc.*

le che - min OÙ ton pied se po - - se!  
feet like thine Is that path of flow - - ers!

*p*

*più agitato.*

Sil est un sein bien ai - mant Dont l'hon - neur dis -  
 If there be a lov - ing heart Filled with glorious

*a tempo primo.*

po - se! — Dont le fer - me dé - vou - ment N'ait rien de mo -  
 pow - ers, — Whose de - vo - tion, set a - part, Smiles tho' For - tune

ro - se, — Si tou - jours ce no - ble sein Bat pour un digne dessein!  
 low - ers; — If for this no - ble breast Yearns for the high - est, best,

J'en veux fai - re le coussin Où ton front se po - - se!  
 On this heart thy brow should rest Wreathed with love - liest flowers. —

*con affetto.*

*dolciss.*

Meno vivo, quasi Andante.

S'il est un rê - ve d'a - mour, Par - fu - mé de ro - se,  
If there be Love's dearest dream Sweet with breath of flow'rs,

*molto espress.* *m. d.* *m. g.*

Où l'on trou - ve cha - que jour Quel - que douce cho - se  
Where each new day it should seem Bright - er 'neath those bowers:

*cresc.* *più ten.*

Un rê - ve que Dieu bé - nit Où l'âme a l'â - me s'u - nit  
A dream God him - self hath blest, Where soul to soul is con - fest:

*mf* *cresc. molto.*

Oh! j'en veux faire le nid Où ton coeur se po - - se.  
Ah! there I'd build a nest For thy heart's sweet - est hours.

*rit.* *ff* *rit.* *dolciss.* *p*



# A SELECT LIST OF New Songs and Ballads by Modern Composers

FROM THE CATALOGUE OF  
**THE BOSTON MUSIC COMPANY**  
G. Schirmer

26 AND 28 WEST STREET, BOSTON, MASS.

Note.—Any of the compositions listed will be sent for examination.

\*Orchestra parts may be had of the publishers.

<b>LAUTZ, HENRY J.</b> EVENING. (G. and E.) Med. Gb . . . . .40	<b>OSGOOD, GEORGE L.</b> APRIL, LAUGH THY GIRLISH LAUGHTER. High G . . . . .50 THE NIGHT HAS A THOUSAND EYES. High E; Med. C . . . . .50	<b>SLATER, DAVID DICK</b> BELOVED, SLEEP. High Ab; Med. G; Med. F; Low Eb . . . . .60 I WONDER IF EVER THE ROSE. High E; Med. D; Low C . . . . .50 MAY DAY MORN. High F; Med. Eb; Med. D; Low C . . . . .60
<b>LEIGH, PERCIVAL</b> WHEN I WAS ONE-AND-TWENTY. (From "The Shropshire Lad") High F; Med. D; Low C . . . . .50	<b>RAE, KENNETH</b> LIFE'S EPITOME. High Eb; Med. Db; Med. C; Low Bb . . . . .60 LOVE'S MADRIGAL. High Eb; Med. D; Low C . . . . .75	<b>SMITH, WILSON G.</b> O WONDROUS DREAM. High F; Low Eb . . .50
<b>LLOYD, EDWARD T.</b> A BIRTHDAY WISH. High Bb; Med. Ab; Med. G; Low F . . . . .60 SWEET ROSES. (G. and E.) High C; Med. Bb; Med. Ab; Low G . . . . .60	<b>RICH, CARYL B.</b> LULLABY LANE. (Children) Med. Eb . . .50 MY LAMMIE. (Children) Med. Eb . . .50 THE SEAMSTRESS. (Children) Med. D . .50 SPORT AND REST. (Children) Med. D . .50	<b>SPARROW, FRED W.</b> WHEN VIOLETS THEIR FRAGRANCE SPILL. (Organ and violin or 'cello <i>ad lib.</i> ) High F; Med. Eb; Med. D; Low C . . . . .60
<b>LUNT, G. W.</b> KING BABY. (Children) Med. Ab . . . . .50 THE SOLAR MONDAY. (Children) Med. E . .50	<b>RIKER, FRANKLIN</b> By PROXY. High F . . . . .40 A FATHER'S LULLABY. Med. Ab . . . . .50 JUST ACROSS THE WAY. Med. F . . . . .40 LETTIE MALONE. Med. Ab . . . . .50 THE LOST BOY. Med. F . . . . .60 MY CAPTIVE. Low Ab . . . . .40 THE NEW LOVE. Med. F . . . . .40 RELEASED. High G . . . . .50 'VIRA. Med. C . . . . .50	<b>STEBBINS, G. WARING</b> BY-LOW SONG. Med. F . . . . .50 THE FOUR SEASONS. ('Cello obligato) High C; Med. Bb; Low G . . . . .75 THE NOISETTE. High F; Low D . . . . .50
<b>MABERY, MARGARET ELLIS</b> Go, LOVELY ROSE. High Gb . . . . .30 SHADOWS. Med. F . . . . .30 SONG OF THE NIGHTINGALE. High Ab; Med. G . . . . .40	<b>ROGERS, JAMES H.</b> THE CAPTAIN. High D; Low C . . . . .50 "IF NO ONE EVER MARRIES ME." Med. F . .50 *LOVE HAS WINGS. High A; Low G . . . . .60 A SUMMER WOOING. High F; Med. D . . .50	<b>STEWART, H. J.</b> *THE ANGELUS. Med. Bb . . . . .60 *AWAKE, DEAR HEART. High F; Med. D . .60 *A BOAT SONG. High Eb; Med. Db . . .50 *A CALIFORNIA NIGHT SONG. ('Cello obligato) High F min.; Med. D min. . . . .75 *CONTRASTS. High D min.; Med. B min. . .50 *FOR LOVE OF THEE. High Db; Med. Bb . .50 *OH! LIKE A GARDEN IS MY HEART. High Eb; Low C . . . . .50 *OUT IN THE OPEN MEADOW. High Gb; Med. Eb . . . . .50 *SECRETS. High G; Low Eb . . . . .50 *THIS DAY IS BORN A SAVIOUR. (Christmas) High D min.; Med. B min. . . . .60
<b>MAQUARRE, ANDRE</b> BILLET DOUX. (F. and E.) Med. Eb . . . .60 MOISSONS. (F. and E.) Med. Db . . . . .60	<b>ROGERS, WINTHROP L.</b> THE BANKS OF CREE. (Scotch) Med. G . .50 THE LUTE PLAYER'S HOUSE. Med. B . . .50 NEAR IN THE FOREST. Med. Gb . . . . .50 OUT OVER THE FORTH. (Scotch) High Bb .40 THE SUMMER SEA. Med. G . . . . .50 TEN SONGS BY KATE GREENAWAY. Med. n. 1.00 THE TIDF RIVER. Med. G min. . . . .60 TWO BIRDS FLEW INTO THE SUNSET GLOW. Med. D . . . . .50 THE WOODLARK. (Scotch) High C . . . .50	<b>STIMSON, F. W.</b> *THE VOICE OF SPRING. (Waltz song) High Eb . . . . .75
<b>MANNEY, CHARLES FONTEYN</b> AUTUMN SONG. (F. and E.) Med. G min. .50 THE BLUE HILLS FAR AWAY. High E; Med. Db . . . . .50 CALM ON THE LISTENING EAR OF NIGHT. (Christmas) High Eb; Med. Db; Low B . .50 DAISIES. High C; Low A . . . . .50 EMBRYO. Med. F . . . . .50 EVENING SONG. (G. and E.) High D min.; Low B min. . . . .60 FIDELITY. (F. and E.) High D; Low B . .50 FOR SOMEBODY. High F; Med. Db . . . .50 THE HEAVENLY PROMISE. (Sacred) High F; Low Eb . . . . .50 MY JEAN. High F; Low D . . . . .50	<b>ROSE, FABIAN</b> CAN YOU FORGIVE? High F; Low C . . . .60 *LOVE WILL TELL THE REST. High D; Med. C; Med. Bb; Low Ab . . . . .60 *SWEET EYES OF BLUE. High Bb; Med. Ab; Med. G; Low F . . . . .60	<b>STRUBE, GUSTAV</b> A SILENT GARDEN. (E. and G.) High Ab .50 SWEETHEART, FOR YOU. (E. and G.) High F . . . . .50
<b>MASCHERONI, ANGELO</b> THE LAND OF YESTERDAY. (I. and E.) High D; Med. C; Low A . . . . .60 THINE FOR LIFE. High F; Med. Eb; Med. D; Low C . . . . .60	<b>RUTLAND, JOHN</b> GOD IS OUR REFUGE. (Sacred duet) Vio- lin obligato. Two Bases Bb; Two Bari- tones C . . . . .75	<b>SWIFT, GERTRUDE H.</b> LOVE. High F . . . . .30
<b>MAWSON-MARKS, C.</b> *SLEEP ON. (Serenade) High G; Med. F; Low Eb . . . . .60	<b>RYDER, ARTHUR H.</b> THE DAWN IS WHERE THOU ART. High F; Med. D . . . . .50 DEAR, IF YOU CEASE TO LOVE ME. Med. G .50 FIVE LYRICS. (Louise Heald) Complete n. 1.25 HUGH OF THE HILL. Med. E min. . . . .60 LITTLE BOATS. (Lullaby) Med. Ab; Low F . . . . .50 LOVE IS COME. High Db . . . . .50 THE PLAIDIE. (Scotch) Med. G; Low E . .50 REMINISCENCE. High Gb . . . . .60 ROBIN HOOD'S GOODNIGHT. Ten. Eb; Bar. Db . . . . .50 THE ROBIN LAUGHED IN THE ORANGE-TREE. High Bb; Med. G . . . . .50 A VOICE ON THE WINDS. High Gb . . . .60 WHO BUT YOUR LOVER. High E . . . . .50	<b>TAYLOR, ARTHUR MELVIN</b> AH! LET ME DREAM. High Ab; Med. F; Low D . . . . .50 THE DAISY. High F; Med. D . . . . .40 DOST THOU LOVE ME? High Ab; Med. F . .40 A DRAP O' DEW. High F; Med. D . . . .50 IF MY LITTLE GIRL WERE A TINY STAR. High G; Low E . . . . .50 IN SPRINGTIME. High Eb . . . . .40 IRISH LOVE SONG. High C min.; Med. A min. . . . .50 A MADRIGAL. High F; Med. D . . . . .40 THE QUESTION. High A; Med. F . . . . .40 A ROSE SONG. High Eb; Med. C . . . . .40 SWEET MA HONEY. High D min.; Med. B min. . . . .50 THE VIOLET AND THE SUNFLOWER. High Ab; Med. F . . . . .40
<b>MENDELSSOHN, F.</b> I WAITED FOR THE LORD. High Eb; Low C . . . . .60 O COME, EVERY ONE THAT THIRSTETH. High Bb; Low G . . . . .60		<b>TELMA, MAURICE</b> ADORATION. High C; Med. Bb; Med. A; Low G . . . . .60 REMEMBRANCE. (Violin obligato) High D; Med. Bb; Low Ab . . . . .75
<b>NEEDHAM, ELIZABETH E.</b> THE FISH ARE IN THE BAY. Bar. Eb; Bass D and C . . . . .75		
<b>NICHOLS, ROBERT</b> TO THEE, O GOD. (Sacred) Low Db . . . .50		
<b>NORRIS, HOMER</b> O PERFECT LOVE. (A wedding song) Med. Ab . . . . .60		
<b>NEVIN, ETHELBERT</b> AT TWILIGHT. High G; Low F . . . . .50 A BOOK OF SONGS. High and low . . n. 1.25 LITTLE BOY BLUE. High Bb; Low Ab . . .60 TIME ENOUGH. (E. and G.) Med. Ab . . .50 'T WAS APRIL. High G; Low F . . . . .50		

THEMATIC HANDBOOKS containing 40 English ballads and 22 sacred songs, providing a convenient means of choosing the most attractive compositions in these classes, will be sent to any address without expense.