

W. A. Mozart

Sinfonia N°6
KV 43

Violoncello

Sinfonia N°6 in F

W. A. Mozart

Allegro

$$f$$

cresc.

Musical notation for the bass line of 'The Rose Tree'. The key signature is one flat (B-flat), and the time signature is 3/4. The melody consists of eighth and sixteenth notes, with some measures containing beamed sixteenth notes. The notation is as follows:

Measure 1: G2, A2, B2
 Measure 2: C3, D3, E3
 Measure 3: F3, G3, A3
 Measure 4: B3, C4, D4
 Measure 5: E4, F4, G4
 Measure 6: A4, B4, C5
 Measure 7: D5, E5, F5
 Measure 8: G5, A5, B5
 Measure 9: C6, D6, E6
 Measure 10: F6, G6, A6
 Measure 11: B6, C7, D7
 Measure 12: E7, F7, G7
 Measure 13: A7, B7, C8
 Measure 14: D8, E8, F8
 Measure 15: G8, A8, B8
 Measure 16: C9, D9, E9
 Measure 17: F9, G9, A9
 Measure 18: B9, C10, D10
 Measure 19: E10, F10, G10
 Measure 20: A10, B10, C11
 Measure 21: D11, E11, F11
 Measure 22: G11, A11, B11
 Measure 23: C12, D12, E12
 Measure 24: F12, G12, A12
 Measure 25: B12, C13, D13
 Measure 26: E13, F13, G13
 Measure 27: A13, B13, C14
 Measure 28: D14, E14, F14
 Measure 29: G14, A14, B14
 Measure 30: C15, D15, E15
 Measure 31: F15, G15, A15
 Measure 32: B15, C16, D16
 Measure 33: E16, F16, G16
 Measure 34: A16, B16, C17
 Measure 35: D17, E17, F17
 Measure 36: G17, A17, B17
 Measure 37: C18, D18, E18
 Measure 38: F18, G18, A18
 Measure 39: B18, C19, D19
 Measure 40: E19, F19, G19
 Measure 41: A19, B19, C20
 Measure 42: D20, E20, F20
 Measure 43: G20, A20, B20
 Measure 44: C21, D21, E21
 Measure 45: F21, G21, A21
 Measure 46: B21, C22, D22
 Measure 47: E22, F22, G22
 Measure 48: A22, B22, C23
 Measure 49: D23, E23, F23
 Measure 50: G23, A23, B23
 Measure 51: C24, D24, E24
 Measure 52: F24, G24, A24
 Measure 53: B24, C25, D25
 Measure 54: E25, F25, G25
 Measure 55: A25, B25, C26
 Measure 56: D26, E26, F26
 Measure 57: G26, A26, B26
 Measure 58: C27, D27, E27
 Measure 59: F27, G27, A27
 Measure 60: B27, C28, D28
 Measure 61: E28, F28, G28
 Measure 62: A28, B28, C29
 Measure 63: D29, E29, F29
 Measure 64: G29, A29, B29
 Measure 65: C30, D30, E30
 Measure 66: F30, G30, A30
 Measure 67: B30, C31, D31
 Measure 68: E31, F31, G31
 Measure 69: A31, B31, C32
 Measure 70: D32, E32, F32
 Measure 71: G32, A32, B32
 Measure 72: C33, D33, E33
 Measure 73: F33, G33, A33
 Measure 74: B33, C34, D34
 Measure 75: E34, F34, G34
 Measure 76: A34, B34, C35
 Measure 77: D35, E35, F35
 Measure 78: G35, A35, B35
 Measure 79: C36, D36, E36
 Measure 80: F36, G36, A36
 Measure 81: B36, C37, D37
 Measure 82: E37, F37, G37
 Measure 83: A37, B37, C38
 Measure 84: D38, E38, F38
 Measure 85: G38, A38, B38
 Measure 86: C39, D39, E39
 Measure 87: F39, G39, A39
 Measure 88: B39, C40, D40
 Measure 89: E40, F40, G40
 Measure 90: A40, B40, C41
 Measure 91: D41, E41, F41
 Measure 92: G41, A41, B41
 Measure 93: C42, D42, E42
 Measure 94: F42, G42, A42
 Measure 95: B42, C43, D43
 Measure 96: E43, F43, G43
 Measure 97: A43, B43, C44
 Measure 98: D44, E44, F44
 Measure 99: G44, A44, B44
 Measure 100: C45, D45, E45
 Measure 101: F45, G45, A45
 Measure 102: B45, C46, D46
 Measure 103: E46, F46, G46
 Measure 104: A46, B46, C47
 Measure 105: D47, E47, F47
 Measure 106: G47, A47, B47
 Measure 107: C48, D48, E48
 Measure 108: F48, G48, A48
 Measure 109: B48, C49, D49
 Measure 110: E49, F49, G49
 Measure 111: A49, B49, C50
 Measure 112: D50, E50, F50
 Measure 113: G50, A50, B50
 Measure 114: C51, D51, E51
 Measure 115: F51, G51, A51
 Measure 116: B51, C52, D52
 Measure 117: E52, F52, G52
 Measure 118: A52, B52, C53
 Measure 119: D53, E53, F53
 Measure 120: G53, A53, B53
 Measure 121: C54, D54, E54
 Measure 122: F54, G54, A54
 Measure 123: B54, C55, D55
 Measure 124: E55, F55, G55
 Measure 125: A55, B55, C56
 Measure 126: D56, E56, F56
 Measure 127: G56, A56, B56
 Measure 128: C57, D57, E57
 Measure 129: F57, G57, A57
 Measure 130: B57, C58, D58
 Measure 131: E58, F58, G58
 Measure 132: A58, B58, C59
 Measure 133: D59, E59, F59
 Measure 134: G59, A59, B59
 Measure 135: C60, D60, E60
 Measure 136: F60, G60, A60
 Measure 137: B60, C61, D61
 Measure 138: E61, F61, G61
 Measure 139: A61, B61, C62
 Measure 140: D62, E62, F62
 Measure 141: G62, A62, B62
 Measure 142: C63, D63, E63
 Measure 143: F63, G63, A63
 Measure 144: B63, C64, D64
 Measure 145: E64, F64, G64
 Measure 146: A64, B64, C65
 Measure 147: D65, E65, F65
 Measure 148: G65, A65, B65
 Measure 149: C66, D66, E66
 Measure 150: F66, G66, A66
 Measure 151: B66, C67, D67
 Measure 152: E67, F67, G67
 Measure 153: A67, B67, C68
 Measure 154: D68, E68, F68
 Measure 155: G68, A68, B68
 Measure 156: C69, D69, E69
 Measure 157: F69, G69, A69
 Measure 158: B69, C70, D70
 Measure 159: E70, F70, G70
 Measure 160: A70, B70, C71
 Measure 161: D71, E71, F71
 Measure 162: G71, A71, B71
 Measure 163: C72, D72, E72
 Measure 164: F72, G72, A72
 Measure 165: B72, C73, D73
 Measure 166: E73, F73, G73
 Measure 167: A73, B73, C74
 Measure 168: D74, E74, F74
 Measure 169: G74, A74, B74
 Measure 170: C75, D75, E75
 Measure 171: F75, G75, A75
 Measure 172: B75, C76, D76
 Measure 173: E76, F76, G76
 Measure 174: A76, B76, C77
 Measure 175: D77, E77, F77
 Measure 176: G77, A77, B77
 Measure 177: C78, D78, E78
 Measure 178: F78, G78, A78
 Measure 179: B78, C79, D79
 Measure 180: E79, F79, G79
 Measure 181: A79, B79, C80
 Measure 182: D80, E80, F80
 Measure 183: G80, A80, B80
 Measure 184: C81, D81, E81
 Measure 185: F81, G81, A81
 Measure 186: B81, C82, D82
 Measure 187: E82, F82, G82
 Measure 188: A82, B82, C83
 Measure 189: D83, E83, F83
 Measure 190: G83, A83, B83
 Measure 191: C84, D84, E84
 Measure 192: F84, G84, A84
 Measure 193: B84, C85, D85
 Measure 194: E85, F85, G85
 Measure 195: A85, B85, C86
 Measure 196: D86, E86, F86
 Measure 197: G86, A86, B86
 Measure 198: C87, D87, E87
 Measure 199: F87, G

$$f$$

A

$$f$$
[illegible]23 B

C

9

 f

The musical notation for the bass staff shows six measures. The first measure contains four eighth notes (G2, F2, E2, D2) beamed together. The second measure contains four eighth notes (C2, B1, A1, G1) beamed together. The third measure contains eight eighth notes (F1, E1, D1, C1, B0, A0, G0, F0) beamed together. The fourth measure contains eight eighth notes (E0, D0, C0, B0, A0, G0, F0, E0) beamed together. The fifth measure contains two quarter notes (D1, C1). The sixth measure contains one quarter note (B0) followed by a whole rest.

The musical notation for the bass staff shows a sequence of notes across five measures. The first measure contains two eighth notes, G2 and F2. The second measure contains one eighth note, E2, followed by a quarter rest. The third measure contains a continuous eighth-note scale starting from D2 and ascending through C3, B2, A2, G2, F2, E2, and D2. The fourth measure contains one eighth note, C2, followed by a quarter rest. The fifth measure contains a continuous eighth-note scale starting from B1 and ascending through A1, G1, F1, E1, D1, C1, and B1.

[illegible]

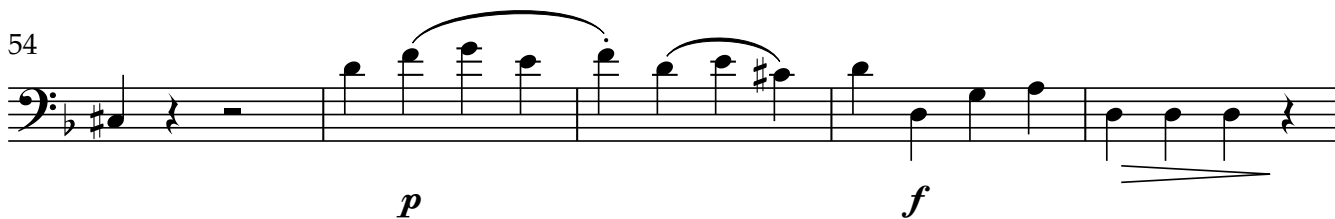
Violoncello

50

D



54

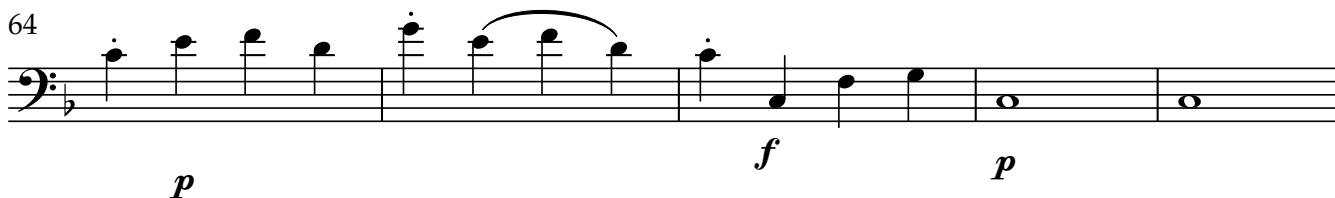


59

E



64



69



73

F

11

G



87



92

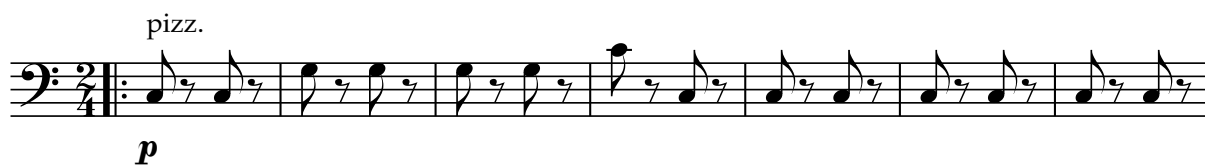


97



Andante

Violoncello



Menuetto

Violoncello

fl1 arco
3 *mp*

6 [A] *f*

11

17 [B]

25 [C]

16 [D] TRIO *p*

[E] *f* 3 3 3 3

30 *p fp p*

[F] ob1 3 *f*

43 [G]

48

Violoncello

Allegro



f

7

[A]



12



17 [B]



p

25 [C]



f

30

[D]



p

36



f

p

42



f

p

f

Violoncello

48

[E]



55

[F]



62

[G]



67



74

[H]



80



86

[I]



91



95

[J]



102



107

