

CANZON VIGESIMAPRIMA

(from: *Libro primo de canzoni - 1584*)

Score (02':40")

for Brass Quartet

Florentio Maschera (c.1541 - 1584)

Arr. Michel Rondeau

Allegro ♩. = 70

Trumpet in C 1

Trumpet in C 2

Trombone

Bass Trombone

C Tpt. 1

C Tpt. 2

Tbn.

B. Tbn.

C Tpt. 1

C Tpt. 2

Tbn.

B. Tbn.

25

C Tpt. 1

C Tpt. 2

Tbn.

B. Tbn.

Measures 25-28. C Tpt. 1 and C Tpt. 2 are in treble clef with two flats. Tbn. and B. Tbn. are in bass clef with two flats. The music features various rhythmic patterns including eighth and sixteenth notes, and rests.

29

C Tpt. 1

C Tpt. 2

Tbn.

B. Tbn.

Measures 29-33. C Tpt. 1 and C Tpt. 2 are in treble clef with two flats. Tbn. and B. Tbn. are in bass clef with two flats. The music continues with complex rhythmic figures and rests.

34

C Tpt. 1

C Tpt. 2

Tbn.

B. Tbn.

Measures 34-38. C Tpt. 1 and C Tpt. 2 are in treble clef with two flats. Tbn. and B. Tbn. are in bass clef with two flats. The music concludes with sustained notes and rests.

39

C Tpt. 1

C Tpt. 2

Tbn.

B. Tbn.

44

C Tpt. 1

C Tpt. 2

Tbn.

B. Tbn.

49

C Tpt. 1

C Tpt. 2

Tbn.

B. Tbn.

54

C Tpt. 1

C Tpt. 2

Tbn.

B. Tbn.

59

C Tpt. 1

C Tpt. 2

Tbn.

B. Tbn.

64

C Tpt. 1

C Tpt. 2

Tbn.

B. Tbn.

69

C Tpt. 1

C Tpt. 2

Tbn.

B. Tbn.

74

C Tpt. 1

C Tpt. 2

Tbn.

B. Tbn.

78

C Tpt. 1

C Tpt. 2

Tbn.

B. Tbn.

CANZON VIGESIMAPRIMA

(from: *Libo primo de canzoni - 1584*)

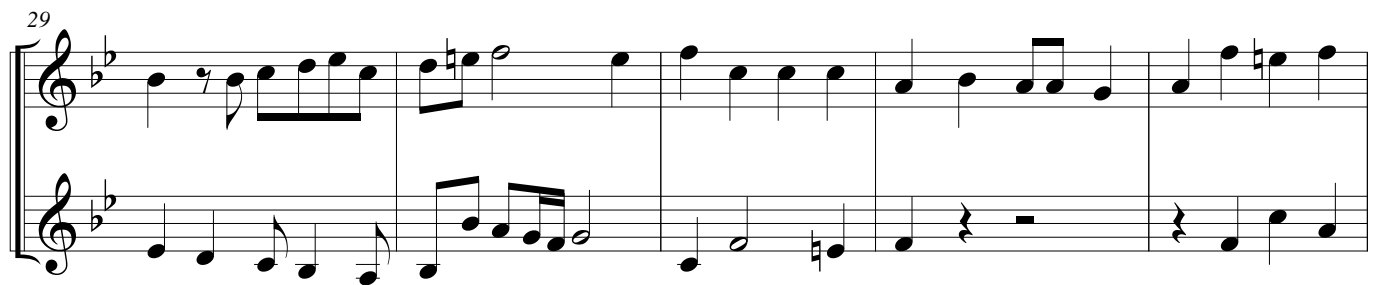
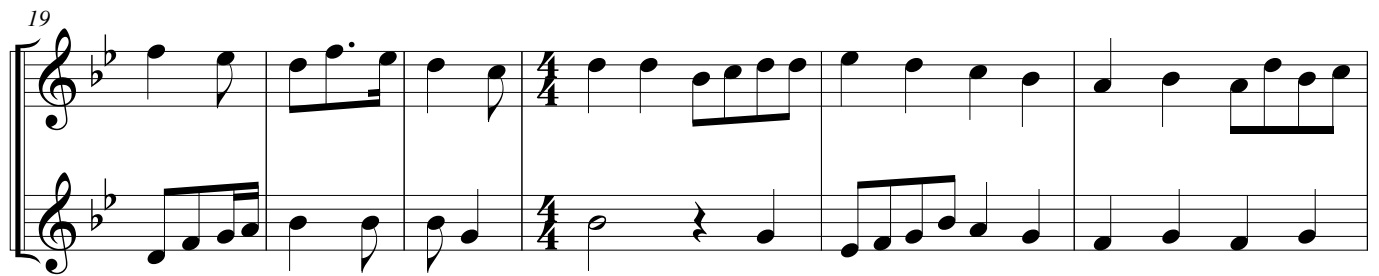
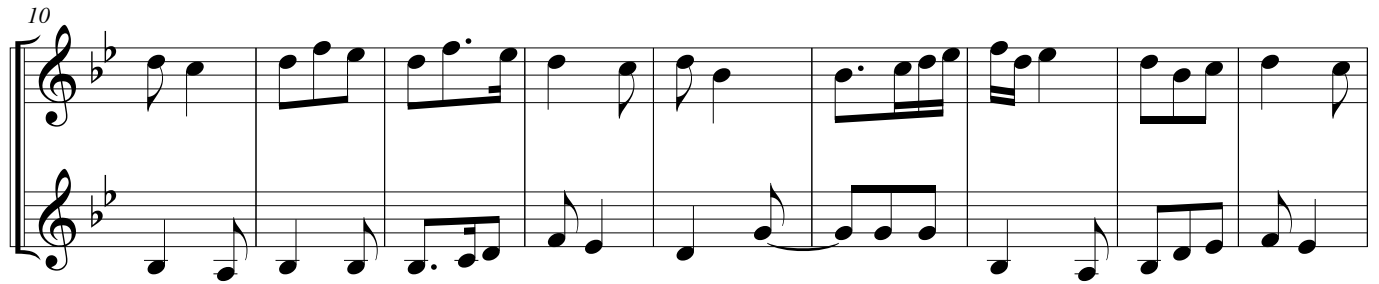
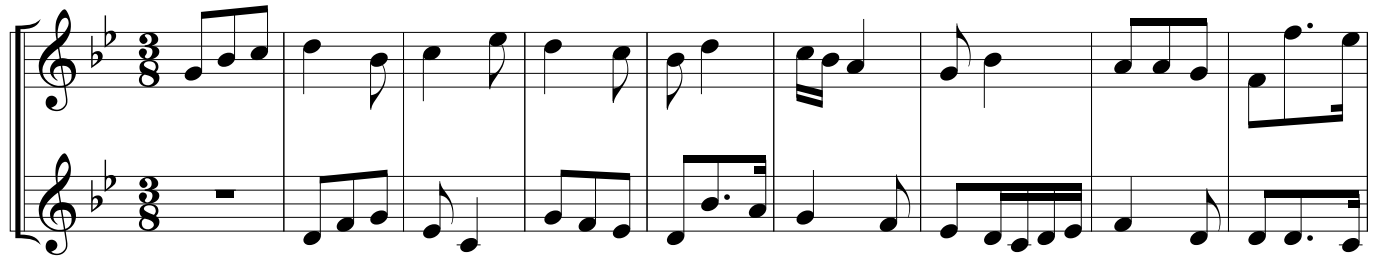
C Trumpets

for Brass Quartet

Florentio Maschera (c.1541 - 1584)

Arr. Michel Rondeau

Allegro $\text{♩} = 70$



34

Measures 34-38 of the musical score. The key signature has two flats (B-flat and E-flat). The melody in the upper staff begins with a half note B-flat, followed by a half note E-flat, and then a whole rest. It continues with a quarter note G, a quarter note F, a quarter note E, and a quarter note D. The lower staff provides harmonic support with a half note B-flat, a half note E-flat, and then a series of eighth notes: G, F, E, D, C, B, A, G.

39

Measures 39-43 of the musical score. The melody in the upper staff continues with a quarter note C, a quarter note B, a quarter note A, and a quarter note G. It then has a half rest, followed by a half note F, a half note E, and a whole rest. The lower staff continues with a half note G, a half note F, a half note E, and a half note D, followed by a series of eighth notes: C, B, A, G, F, E, D, C.

44

Measures 44-48 of the musical score. The melody in the upper staff has a whole rest, followed by a half note G, a half note F, a half note E, and a half note D. It then has a whole rest, followed by a half note C, a half note B, a half note A, and a half note G. The lower staff has a whole rest, followed by a half note G, a half note F, a half note E, and a half note D, followed by a series of eighth notes: C, B, A, G, F, E, D, C.

49

Measures 49-53 of the musical score. The melody in the upper staff begins with a half note B-flat, followed by a half note E-flat, and then a whole rest. It continues with a quarter note G, a quarter note F, a quarter note E, and a quarter note D. The lower staff provides harmonic support with a half note B-flat, a half note E-flat, and then a series of eighth notes: G, F, E, D, C, B, A, G.

54

Measures 54-58 of the musical score. The melody in the upper staff begins with a half note B-flat, followed by a half note E-flat, and then a whole rest. It continues with a quarter note G, a quarter note F, a quarter note E, and a quarter note D. The lower staff provides harmonic support with a half note B-flat, a half note E-flat, and then a series of eighth notes: G, F, E, D, C, B, A, G.

59

Measures 59-63 of the musical score. The key signature is B-flat major (two flats). The melody in the upper staff begins with a quarter note G4, followed by eighth notes A4-B4, quarter notes C5-B4, and a half note A4. The bass line starts with a half note G3, followed by eighth notes A3-B3, quarter notes C4-B3, and a half note A3. Measures 60-63 continue the melodic and harmonic development with various rests and note values.

64

Measures 64-68 of the musical score. The melody in the upper staff features a half note G4, quarter notes A4-B4, and a half note C5. The bass line continues with eighth notes G3-A3, quarter notes B3-C4, and a half note D4. Measures 65-68 show further melodic and harmonic progression.

69

Measures 69-73 of the musical score. The melody in the upper staff includes a half note G4, quarter notes A4-B4, and a half note C5. The bass line features eighth notes G3-A3, quarter notes B3-C4, and a half note D4. Measures 70-73 continue the melodic and harmonic development.

74

Measures 74-77 of the musical score. The melody in the upper staff begins with a half note G4, followed by quarter notes A4-B4, and a half note C5. The bass line starts with a half note G3, followed by quarter notes A3-B3, and a half note C4. Measures 75-77 continue the melodic and harmonic development.

78

Measures 78-82 of the musical score. The melody in the upper staff includes a half note G4, quarter notes A4-B4, and a half note C5. The bass line features eighth notes G3-A3, quarter notes B3-C4, and a half note D4. Measures 79-82 continue the melodic and harmonic development.

CANZON VIGESIMAPRIMA

(from: *Libro primo de canzoni - 1584*)

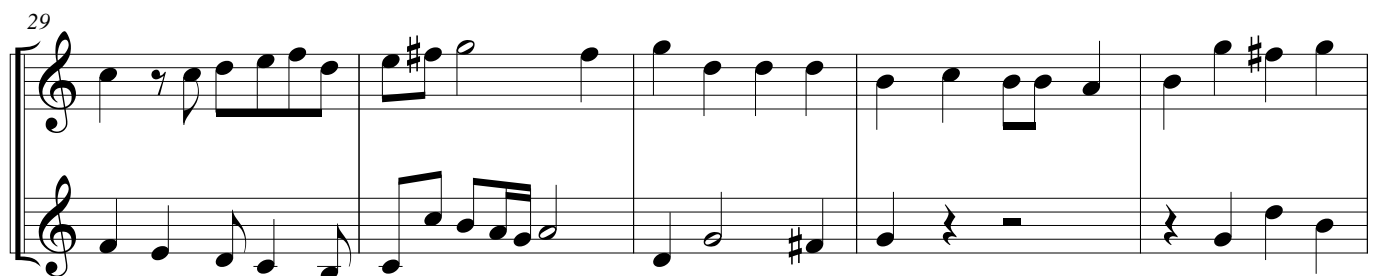
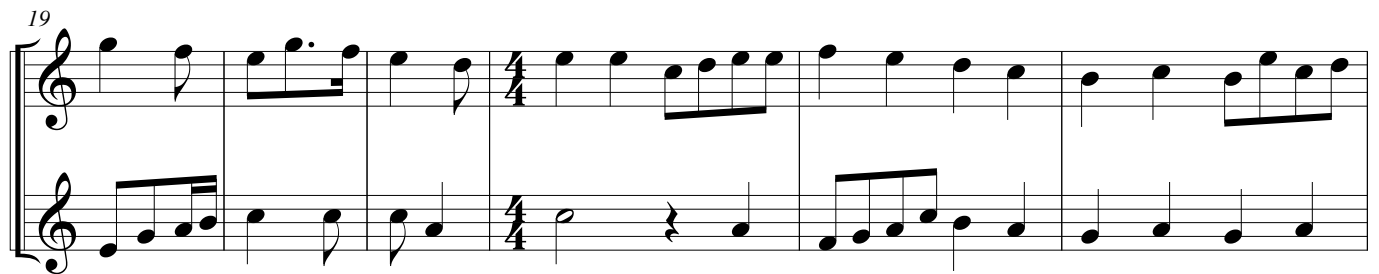
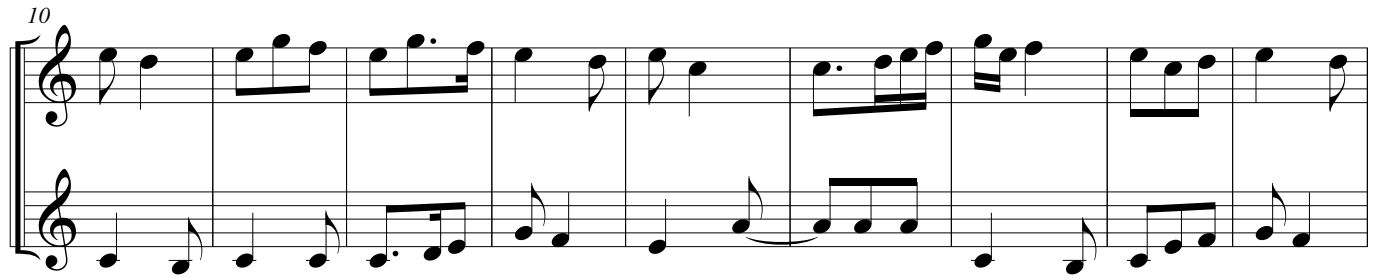
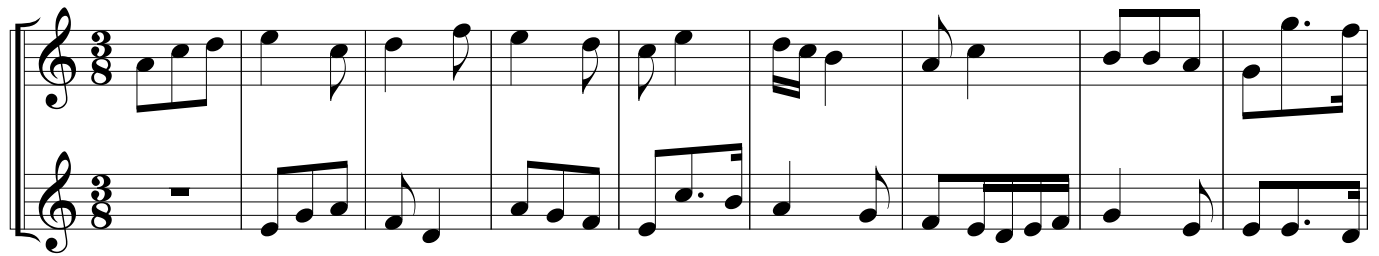
Bb Trumpets

for Brass Quartet

Florentio Maschera (c.1541 - 1584)

Arr. Michel Rondeau

Allegro ♩. = 70



34

Measures 34-38 of the musical score. The system consists of two staves. The upper staff begins with a whole rest in measure 34, followed by a half note G4 in measure 35, and then a quarter note G4 in measure 36. Measures 37 and 38 contain eighth notes. The lower staff begins with a whole note G3 in measure 34, followed by a half note G3 in measure 35, and then a quarter note G3 in measure 36. Measures 37 and 38 contain eighth notes. The key signature has one sharp (F#).

39

Measures 39-43 of the musical score. The system consists of two staves. The upper staff begins with a quarter note G4 in measure 39, followed by a half note G4 in measure 40, and then a quarter note G4 in measure 41. Measures 42 and 43 contain eighth notes. The lower staff begins with a whole note G3 in measure 39, followed by a half note G3 in measure 40, and then a quarter note G3 in measure 41. Measures 42 and 43 contain eighth notes. The key signature has one sharp (F#).

44

Measures 44-48 of the musical score. The system consists of two staves. The upper staff begins with a whole rest in measure 44, followed by a half note G4 in measure 45, and then a quarter note G4 in measure 46. Measures 47 and 48 contain eighth notes. The lower staff begins with a whole rest in measure 44, followed by a half note G3 in measure 45, and then a quarter note G3 in measure 46. Measures 47 and 48 contain eighth notes. The key signature has one sharp (F#).

49

Measures 49-53 of the musical score. The system consists of two staves. The upper staff begins with a quarter note G4 in measure 49, followed by a half note G4 in measure 50, and then a quarter note G4 in measure 51. Measures 52 and 53 contain eighth notes. The lower staff begins with a whole note G3 in measure 49, followed by a half note G3 in measure 50, and then a quarter note G3 in measure 51. Measures 52 and 53 contain eighth notes. The key signature has one sharp (F#).

54

Measures 54-58 of the musical score. The system consists of two staves. The upper staff begins with a quarter note G4 in measure 54, followed by a half note G4 in measure 55, and then a quarter note G4 in measure 56. Measures 57 and 58 contain eighth notes. The lower staff begins with a whole note G3 in measure 54, followed by a half note G3 in measure 55, and then a quarter note G3 in measure 56. Measures 57 and 58 contain eighth notes. The key signature has one sharp (F#).

59

Measures 59-63 of the musical score. The key signature has one sharp (F#). The melody in the upper staff features eighth and quarter notes, with a whole note rest in measure 62. The bass line consists of eighth and quarter notes, with a whole note in measure 62.

64

Measures 64-68 of the musical score. The melody in the upper staff has a whole note rest in measure 65. The bass line continues with eighth and quarter notes, including a sharp sign in measure 68.

69

Measures 69-73 of the musical score. The melody in the upper staff includes eighth and quarter notes with a sharp sign in measure 72. The bass line features eighth and quarter notes, with a sharp sign in measure 71.

74

Measures 74-77 of the musical score. The key signature changes to two sharps (F# and C#). The melody in the upper staff includes eighth and quarter notes. The bass line consists of eighth and quarter notes. The system ends with a double bar line and a 6/4 time signature.

78

Measures 78-81 of the musical score. The key signature has two sharps (F# and C#). The melody in the upper staff includes eighth and quarter notes. The bass line features eighth and quarter notes. The system ends with a double bar line.

CANZON VIGESIMAPRIMA

(from: *Libo primo de canzoni* - 1584)

Trombones

for Brass Quartet

Florentio Maschera (c.1541 - 1584)

Arr. Michel Rondeau

Allegro $\text{♩} = 70$

Measures 1-9 of the Trombone part. The notation is in bass clef with a key signature of two flats. The time signature is 3/8. Measures 1-3 feature a triplet of eighth notes in both staves. Measures 4-9 continue with eighth and sixteenth note patterns.

Measures 10-18 of the Trombone part. The notation continues with eighth and sixteenth note patterns in both staves.

Measures 19-24 of the Trombone part. Measures 19-21 are in 3/8 time, and measures 22-24 are in 4/4 time. The notation includes eighth, sixteenth, and quarter notes.

Measures 25-28 of the Trombone part. The notation continues with eighth and sixteenth note patterns in both staves.

Measures 29-32 of the Trombone part. The notation includes eighth, sixteenth, and quarter notes, ending with a final measure.

34

Measures 34-38 of the Trombone part. The key signature has two flats (B-flat and E-flat). The music is written in bass clef. Measure 34 starts with a whole rest, followed by a half note G2, a quarter note A2, and a quarter note B2. Measure 35 has a half note C3, a quarter note D3, and a quarter note E3. Measure 36 has a half note F3, a quarter note G3, and a quarter note A3. Measure 37 has a half note B3, a quarter note C4, and a quarter note D4. Measure 38 has a half note E4, a quarter note F4, and a quarter note G4.

39

Measures 39-43 of the Trombone part. Measure 39 has a whole rest, followed by a half note G2, a quarter note A2, and a quarter note B2. Measure 40 has a half note C3, a quarter note D3, and a quarter note E3. Measure 41 has a half note F3, a quarter note G3, and a quarter note A3. Measure 42 has a half note B3, a quarter note C4, and a quarter note D4. Measure 43 has a half note E4, a quarter note F4, and a quarter note G4.

44

Measures 44-48 of the Trombone part. Measure 44 has a whole rest, followed by a half note G2, a quarter note A2, and a quarter note B2. Measure 45 has a half note C3, a quarter note D3, and a quarter note E3. Measure 46 has a half note F3, a quarter note G3, and a quarter note A3. Measure 47 has a half note B3, a quarter note C4, and a quarter note D4. Measure 48 has a half note E4, a quarter note F4, and a quarter note G4.

49

Measures 49-53 of the Trombone part. Measure 49 has a whole rest, followed by a half note G2, a quarter note A2, and a quarter note B2. Measure 50 has a half note C3, a quarter note D3, and a quarter note E3. Measure 51 has a half note F3, a quarter note G3, and a quarter note A3. Measure 52 has a half note B3, a quarter note C4, and a quarter note D4. Measure 53 has a half note E4, a quarter note F4, and a quarter note G4.

54

Measures 54-58 of the Trombone part. Measure 54 has a whole rest, followed by a half note G2, a quarter note A2, and a quarter note B2. Measure 55 has a half note C3, a quarter note D3, and a quarter note E3. Measure 56 has a half note F3, a quarter note G3, and a quarter note A3. Measure 57 has a half note B3, a quarter note C4, and a quarter note D4. Measure 58 has a half note E4, a quarter note F4, and a quarter note G4.

59

64

69

74

78

CANZON VIGESIMAPRIMA

(from: *Libo primo de canzoni* - 1584)

for Brass Quartet

F Horn (Trombone)

Florentio Maschera (c.1541 - 1584)

Arr. Michel Rondeau

Allegro $\text{♩} = 70$
3

