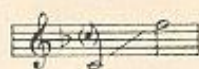
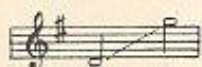


N<sup>o</sup> 1 IN D (ORIGINAL)N<sup>o</sup> 2 IN E<sup>b</sup>N<sup>o</sup> 3 IN FN<sup>o</sup> 4 IN G.

# MATE O' MINE

SONG

With VIOLIN or VIOLONCELLO OBBLIGATO (ad lib.)

WORDS BY

LESLIE COOKE

MUSIC BY

PERCY ELLIOTT

ASCHERBERG, HOPWOOD & CREW LTD.

LONDON.

Copyright

PRICE 2/- NET.

ALLAN & CO. PTY. LTD.  
276-278 COLLINS ST. MELBOURNE.  
BENDIGO. ADELAIDE. GEELONG.



## MATE O' MINE.

We set out together, mate o' mine,  
When youth was in its prime,  
*Life*—the path that lay before us,  
*Life*—the hill we had to climb.  
We neither of us knew the road,  
How long the journey, great the load;  
Nor I how deep the debt I owed  
To God for *mate o' mine!*

We set out together, mate o' mine;  
We've wended road and hill;  
Now it's homeward through the valley  
We must wander at God's will.  
We neither of us fear the gloam,  
Love still shall light the path we roam;  
Should you be *last* returning *Home*,  
I'll greet thee, mate o' mine!

LESLIE COOKE

# MATE O' MINE.

## SONG.

Words by  
LESLIE COOKE

Music by  
PERCY ELLIOTT

VOICE. *Quasi lento e largamente.*

PIANO.

*mf*

*mf*

Re \* Re Re Re \*

*con espress*

set out to- geth - er, mate o' mine. When

*ten*

*ten*

*poco accel.*

Re Re \* Re Re

youth was in its prime,

*piu f ten.*

Life\_ the path that lay be - fore us, Life\_ the hill we had to

*piu f ten*

*poco accel.*

climb; \_\_\_\_\_ We neith - er of us knew the road. \_\_\_\_\_

*poco accel.*

*poco rit.*

How long the jour - ney, great the load; \_\_\_\_\_ Nor

*cresc. e poco rit.*

*f*

I how deep the debt I owed To God for mate o'

*ten. y poco rall.*

*ten.*

*vol. voce*

mine We

*a tempo* *mf ben, sostenuto* *mf*

set out to-gether, mate o' mine; We've wend ed road and

*ten.* *ten.* *poco accel.*

hill; Now it's home-ward thro' the val - - ley

We must wan - der at Gods will; We

*ten. v.* *ten.* *ten.*

*poco accel.*

neith - er of us fear the gloam.

*poco accel.*

Rea Rea \* Rea \* Rea

*piu f ten. v poco rit.*

Love still shall light the path we roam; Should

*ten.*

*piu cresc. e poco rit.*

Rea Rea Rea Rea Rea Rea \* Rea

*f molto dim.*

you be last re - turn - ing Home, I'll

*f molto dim*

*f con calore*

Rea Rea \* Rea Rea

*ten. v op.*

greet thee, mate o' mine!

*ten.*

*mf e cresc.*

Rea Rea Rea

# LATEST SUCCESS

A BEAUTIFUL LITTLE SONG THAT IS NOW IN BIG DEMAND  
AMONGST CONCERT SINGERS.

## BABE O' MINE.

Words and Music by

JESSIE SHMITH

VOICE

PIANO

Ah! Babe o' Mine with  
sweet-est ba-by charm. Sent us from  
heav'n To shield from ev-ry harm. Guard-ing its

*ten ten*

*Babe o' Mine 1*

Ah! Babe o' Mine  
With sweetest baby charm.  
Sent us from heav'n  
To shield from every harm  
Guarding its life  
From sorrow and strife  
Angels watch o'er thee  
Sleeping Babe o' Mine

Ah! Babe o' Mine,  
Whose love we hold so dear.  
God call'd thee,  
And no more thy voice we hea.  
Lonely our hearts,  
Our eyes dimmed with tears,  
Some day we'll be together,  
Babe o' Mine,  
Some day we'll be together  
Babe o' Mine

Price 2/-

FROM ALL MUSIC SELLERS.

No. 205

MUS. N  
mbg  
783.2  
E46

N copy

MUSM 14 2235



High Voice



Low Voice

# The Fragrance of a Rose

(Memories of You)

WILSON G. HOWARD

Moderato

Dear, I re - mem - ber,

*mf*

*p*

Once in the twi - light, Soft - ly you came to me;

Copyright, MCMXIV, by The Willis Music Company

From all Music sellers.

2/- net.

No. 193