



*Songs by*  
*Mrs. H. H. A. Beach*

Op. 78

I

MEADOW-LARKS



II

NIGHT SONG AT AMALFI



III

IN BLOSSOM-TIME



Price, each 60 cents net



G. SCHIRMER

NEW YORK : 3 EAST 43d STREET

LONDON, W. : 18, BERNERS STREET

BOSTON : THE BOSTON MUSIC CO.

# Meadow-Larks

Ina Coolbrith\*

Mrs. H. H. A. Beach. Op. 78, No. 1

Allegro ma non troppo

Piano

8

*mf* *p*

*ped.* \* *ped.* \* *con Pedale*

Detailed description: This block contains the piano introduction. It features a treble clef staff with a melody and a bass clef staff with accompaniment. The key signature has two flats (B-flat and E-flat), and the time signature is common time (C). The tempo is marked 'Allegro ma non troppo'. The introduction consists of four measures. The first measure has a piano dynamic of *mf*, and the second measure has a piano dynamic of *p*. Pedal markings include *ped.*, an asterisk, *ped.*, an asterisk, and *con Pedale*.

*p* *rit.* *a tempo* *dolce*

Sweet, sweet, sweet! — O hap-py that I am! (Lis - ten to the

*pp* *rit.* *a tempo*

*3* *3*

*sempre con Pedale*

Detailed description: This block contains the first line of the vocal melody and piano accompaniment. The vocal line starts with a piano dynamic of *p* and includes markings for *rit.*, *a tempo*, and *dolce*. The piano accompaniment starts with a piano dynamic of *pp* and includes markings for *rit.* and *a tempo*. There are triplet markings (*3*) in the piano accompaniment. The instruction *sempre con Pedale* is written at the bottom.

mea - dow-larks, a - cross the fields that sing! —

Detailed description: This block contains the second line of the vocal melody and piano accompaniment. The vocal line continues with the lyrics 'mea - dow-larks, a - cross the fields that sing!'. The piano accompaniment continues with a similar rhythmic pattern.

*cresc.* *mf* *più cresc. ed accel.*

Sweet, sweet, sweet! — O sub - tle breath of balm, O winds that

*cresc. ed accel.*

Detailed description: This block contains the third line of the vocal melody and piano accompaniment. The vocal line starts with a piano dynamic of *mf* and includes markings for *cresc.* and *più cresc. ed accel.*. The piano accompaniment includes a marking for *cresc. ed accel.*.

\* Words used by kind permission of the author

blow, O buds that grow, O rap - - -

*f*

*Red.*

- ture of the spring! Sweet, sweet, sweet! -

*rall.* *a tempo* *p*

*a tempo* *pp*

*rall.* *3* *3*

*Red.* *3*

*dolcissimo*

O skies serene and blue, That shut the ra - diant pas - tures

*8*

*poco a poco cresc.*

*Red.*

in, that fold the moun - tain's crest!

*sempre con Pedale*

*mf* *cresc. ed accel.*

Sweet, sweet, sweet! — What of the clouds ye knew? The ves - - sels

ride a gold-en tide Up - on a sea at

*f* *rit.* *p*

*rall.* *a tempo* *mf*

rest. — Sweet, sweet, sweet! — Who prates of care and

*p* *rall.* *pp*

*Vivace*

pain? Who says that life is sor-rowful? O life, so glad, so

*sempre f*

fleet! Ah! he who leads the no - - blest life Finds

*sempre f*

*ped.* \* *ped.* \* *sempre con Pedale*

life — the no - - blest gain, — The

tears — of pain a ten - - der rain To

*dim.* *p*

*dim.* *più dim.*

make its wa - - ters sweet.

*pp rall.*

*pp* *rall.*

*a tempo*  
*pp*

Sweet, sweet, sweet! — O hap-py world that is! — Dear heart! I

*a tempo*  
*ppp*

hear a - cross the fields — my mate-ling pipe and call.

*dolcissimo*

*ppp*

Sweet, sweet, sweet!

*ppp* *rapidamente*

*pp* *poco a poco cresc.*

O world so full — of bliss, — O

*poco a poco cresc.*

*f* *appassionato*

world so full of bliss! For life is love, the

world is love, And love is o - ver all,

*ff* *rit.*

For life is love, the world is love, And love is

*rit.* *colla voce*

*a tempo*

o - - - ver all!

*a tempo*

# ANOTHER SPEAKS SUCCESS

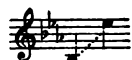
## "SYLVIA"

Lyric by  
**Clinton Scollard**

Price, 50 cents net

Music by  
**Oley Speaks**

LOW IN  
E<sub>b</sub>



MED. IN  
F



HIGH IN  
G



*Andantino espressivo*

Voice

Piano

*mp*

*con pedale*

*mp*

Syl - via's hair is like the night, Touched with glanc - ing star - ry beams;

*pp*

Such a face as drifts thro' dreams, This is Syl - via to the sight.

Copyright, 1914, by G. Schirmer

*Sung with great success by  
Louis Graveure*

**G. SCHIRMER**

3 EAST 43rd STREET

NEW YORK