

Trumpet 1 in B♭

A Puerto Rican Christmas
(Five carols)

Johnson

Allegro moderato

7 7

fp < f

20

28

35 5 15 5

64 $\text{♩} = \text{♩}$ legato *mf*

71 9

85 7 9

104

mf

109

rit.

115

Andante **24** **poco accel.** **3**

143 **Più mosso**

8 *mp*

158

mf

167

8 *mp* *mf*

182

192

2 **11** **7** *mf*

215

11

f *mf*

This musical staff covers measures 215 to 226. It begins with a treble clef and a key signature of two sharps (F# and C#). The first measure (215) contains a whole rest followed by an eighth rest, then an eighth note G4. The second measure (216) has an eighth note G4, a quarter note A4, and an eighth note B4. The third measure (217) features a quarter note A4, a quarter rest, and a quarter note G4. The fourth measure (218) is a whole rest. The fifth measure (219) is a whole rest. The sixth measure (220) starts with a whole rest, followed by an eighth rest, then an eighth note A4. The seventh measure (221) has an eighth note A4, a quarter note B4, and an eighth note A4. The eighth measure (222) contains an eighth note A4, a quarter note G4, and an eighth rest. The ninth measure (223) has an eighth rest, a quarter note G4, and an eighth rest. The tenth measure (224) is a whole rest. The eleventh measure (225) is a whole rest. The twelfth measure (226) is a whole rest. Dynamics include *f* (forte) at the start of measure 215 and *mf* (mezzo-forte) at the start of measure 220.

231

5

mute

mp

This musical staff covers measures 231 to 236. It begins with a treble clef and a key signature of two sharps (F# and C#). The first measure (231) contains a whole rest followed by an eighth rest, then an eighth note G4. The second measure (232) has an eighth note G4, a quarter note A4, and an eighth note B4. The third measure (233) features a quarter note A4, a quarter rest, and a quarter note G4. The fourth measure (234) is a whole rest. The fifth measure (235) is a whole rest. The sixth measure (236) starts with a whole rest, followed by an eighth rest, then an eighth note A4. The seventh measure (237) has an eighth note A4, a quarter note B4, and an eighth note A4. The eighth measure (238) contains an eighth note A4, a quarter note G4, and an eighth rest. The ninth measure (239) has an eighth rest, a quarter note G4, and an eighth rest. The tenth measure (240) is a whole rest. The eleventh measure (241) is a whole rest. The twelfth measure (242) is a whole rest. Dynamics include *mp* (mezzo-piano) at the start of measure 236. The word "mute" is written above the staff in measure 235.

239

8

This musical staff covers measures 239 to 246. It begins with a treble clef and a key signature of two sharps (F# and C#). The first measure (239) contains a whole rest followed by an eighth rest, then an eighth note G4. The second measure (240) has an eighth note G4, a quarter note A4, and an eighth note B4. The third measure (241) features a quarter note A4, a quarter rest, and a quarter note G4. The fourth measure (242) is a whole rest. The fifth measure (243) is a whole rest. The sixth measure (244) starts with a whole rest, followed by an eighth rest, then an eighth note A4. The seventh measure (245) has an eighth note A4, a quarter note B4, and an eighth note A4. The eighth measure (246) contains an eighth note A4, a quarter note G4, and an eighth rest. The ninth measure (247) has an eighth rest, a quarter note G4, and an eighth rest. The tenth measure (248) is a whole rest. The eleventh measure (249) is a whole rest. The twelfth measure (250) is a whole rest. The staff ends with a double bar line. A measure rest of 8 measures is indicated above the staff in measure 244.

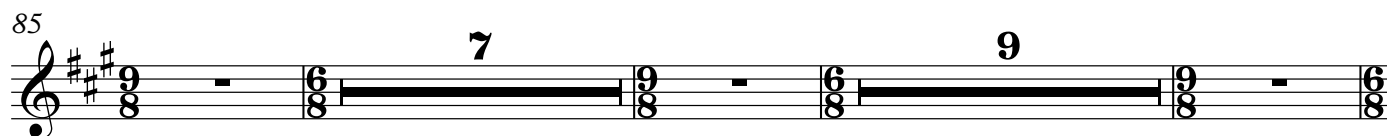
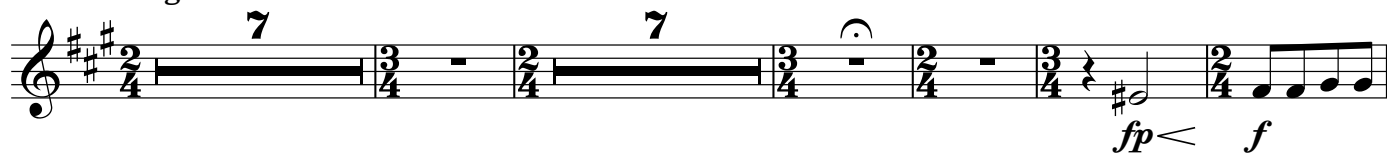
Trumpet 2 in B \flat

A Puerto Rican Christmas

(Five carols)

Johnson

Allegro moderato



104

mf

109

mf rit.

115

Andante 24 3

143 **Più mosso**

mp 8

159

mf 8

175

mp *mf*

183

mf

192 **accel.** **Allegro**

mf 11 7

215

f *mf* 11

231

5 mute mp

Detailed description: This musical staff contains measures 231 through 234. Measure 231 begins with a treble clef and a key signature of three sharps (F#, C#, G#). It starts with a quarter rest, followed by an eighth rest, and then a beamed eighth-note pair (B4 and A4). Measure 232 continues with a quarter note (G#4), a half note (F#4), and an eighth rest. Measure 233 is a whole rest, with a large number '5' positioned above it. Measure 234 starts with a quarter rest, followed by an eighth rest, and then a beamed eighth-note pair (B4 and A4). A dynamic marking of 'mp' is placed below the staff at the end of measure 234. The word 'mute' is written above the staff between measures 233 and 234.

239

8

Detailed description: This musical staff contains measures 239 through 242. Measure 239 starts with a treble clef and a key signature of three sharps (F#, C#, G#). It begins with a quarter note (B4), followed by a half note (A4), and a quarter rest. Measure 240 starts with a quarter rest, followed by an eighth rest, and then a beamed eighth-note pair (B4 and A4). Measure 241 continues with a quarter note (G#4), a half note (F#4), and a quarter rest. Measure 242 is a whole rest, with a large number '8' positioned above it. The staff concludes with a double bar line.