

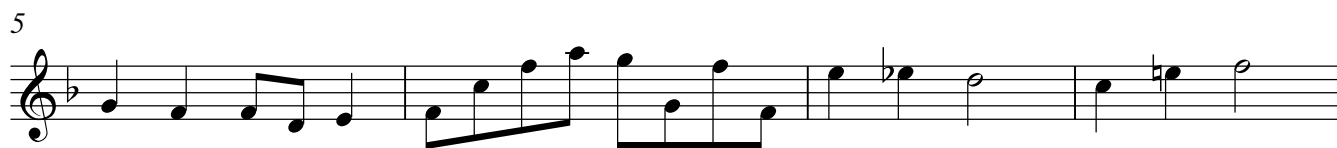
Violine 1

Sonate in F-Dur
für 2 Violinen und Basso continuo

op.5 Nr.1

Gottfried Finger

Adagio



23 **Allegro**

Violin 1 musical score, measures 23 to 54. The tempo is marked **Allegro**. The key signature has one flat (B-flat). The score consists of ten staves of music, each starting with a measure number. The notation includes various rhythmic values, slurs, and ties. The piece concludes with a double bar line at measure 54.

Measures 23-24: Treble clef, B-flat key signature. Measure 23 starts with a quarter rest, followed by eighth and sixteenth notes. Measure 24 continues the melodic line.

Measures 25-26: Measure 25 features a series of eighth notes. Measure 26 continues with eighth and sixteenth notes.

Measures 27-28: Measure 27 has a slur over a group of eighth notes. Measure 28 continues the melodic line.

Measures 29-30: Measure 29 features a slur over a group of eighth notes. Measure 30 continues the melodic line.

Measures 31-32: Measure 31 has a slur over a group of eighth notes. Measure 32 continues the melodic line.

Measures 33-34: Measure 33 features a slur over a group of eighth notes. Measure 34 continues the melodic line.

Measures 35-36: Measure 35 has a slur over a group of eighth notes. Measure 36 continues the melodic line.

Measures 37-38: Measure 37 features a slur over a group of eighth notes. Measure 38 continues the melodic line.

Measures 39-40: Measure 39 has a slur over a group of eighth notes. Measure 40 continues the melodic line.

Measures 41-42: Measure 41 features a slur over a group of eighth notes. Measure 42 continues the melodic line.

Measures 43-44: Measure 43 has a slur over a group of eighth notes. Measure 44 continues the melodic line.

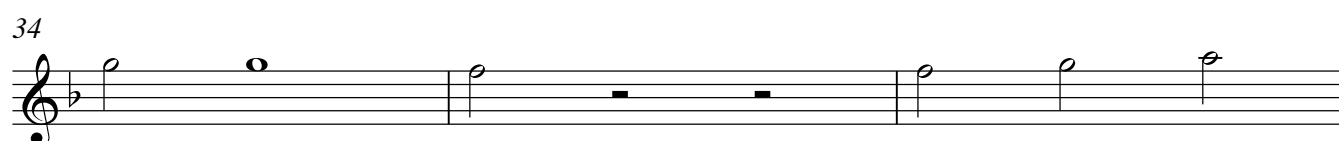
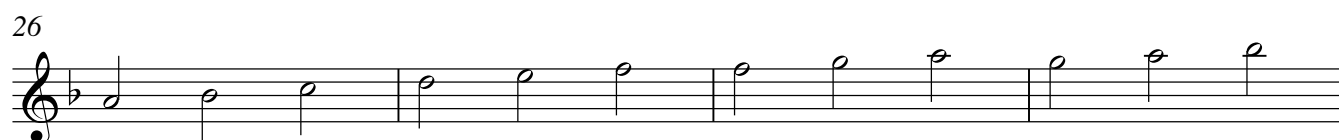
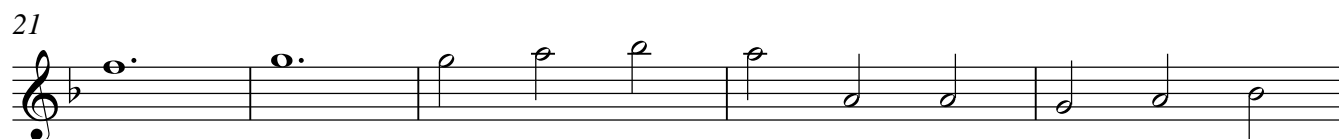
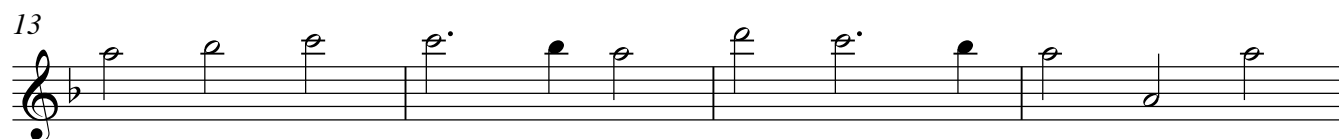
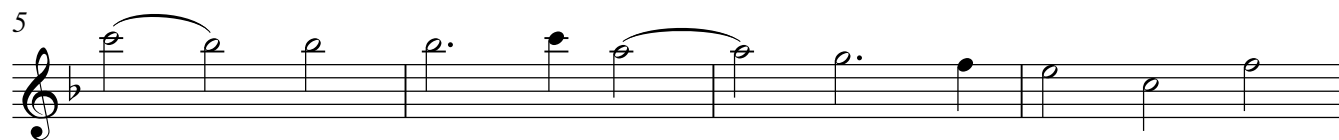
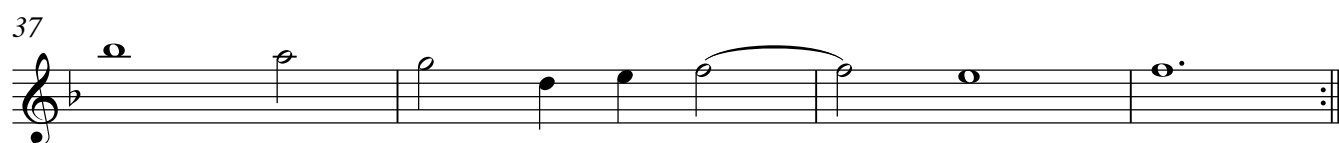
Measures 45-46: Measure 45 features a slur over a group of eighth notes. Measure 46 continues the melodic line.

Measures 47-48: Measure 47 has a slur over a group of eighth notes. Measure 48 continues the melodic line.

Measures 49-50: Measure 49 features a slur over a group of eighth notes. Measure 50 continues the melodic line.

Measures 51-52: Measure 51 has a slur over a group of eighth notes. Measure 52 continues the melodic line.

Measures 53-54: Measure 53 features a slur over a group of eighth notes. Measure 54 concludes the piece with a double bar line.

Largo*p*

41



45



49



53



56



p

Allegro

5



9



12



16



19



21

