

W. A. Mozart

Sinfonia N°6

KV 43

Bassoon 1

Bassoon 1

Sinfonia N°6 in F
KV 43 (1767)

KV 43 (1767)

arr. N P Thomas
chamber orchestra
rev.03

W. A. Mozart

Allegro

$$f$$

6

4

Musical notation for the bass line of 'The Rose Tree'. The key signature has one flat (B-flat). The melody is written on a single staff with a treble clef. It begins with a whole rest, followed by a series of eighth and sixteenth notes, and ends with a quarter note and a half note.

$$f$$
$$\geq$$

14

A

Musical notation for the bass line of 'The Rose Tree'. The key signature is one flat (B-flat). The melody is written on a single staff. It begins with a quarter note G2, followed by an eighth note A2, a quarter note B-flat2, and a quarter note C3. This is followed by a quarter rest, then a quarter note D2, an eighth note E2, a quarter note F2, and a quarter note G2. The melody continues with a quarter note A2, a quarter note B-flat2, a quarter note C3, and a quarter note D2. The piece ends with a quarter note E2, a quarter note F2, and a quarter note G2.

$$f$$

19

The bass line of 'The Rose Tree' is written on a single staff in bass clef. The key signature has one sharp (F#). The melody consists of the following notes: G2 (quarter), A2 (quarter), B2 (quarter), C3 (quarter), B2 (quarter), A2 (quarter), G2 (quarter), F#2 (quarter), E2 (quarter), D2 (quarter), C2 (half). There are rests at the beginning and end of the line.

$$\geq$$

23

B

9

C

2

$$f$$

37

[illegible]

42

46

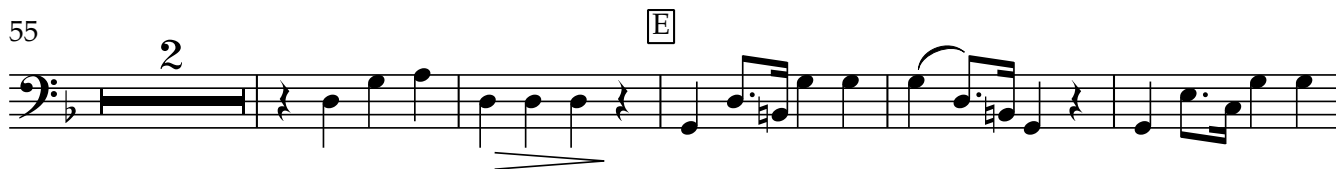
Musical notation for the bass line of 'The Rose Tree'. The key signature is one flat (B-flat). The melody consists of eighth and quarter notes, with some rests. The notation is on a single staff.

Bassoon 1

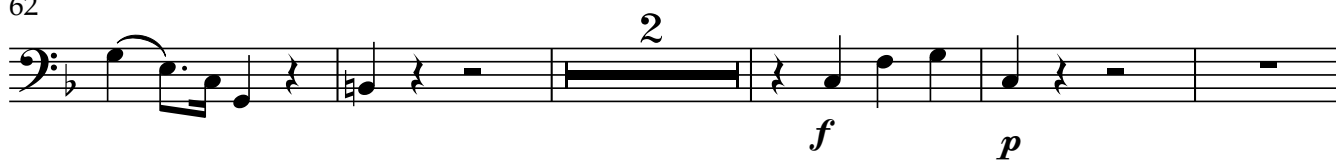
50 D



55



62



69



73 F



87



92



97



Bassoon 1

Andante

5 *p*

10 A

20 B

31 C

39 D *fp*

46 *tr* E

52 *tr*

58 F

63

Menuetto

Bassoon 1

kl1 3 3 3 6

9 [A]

f

16

[B]

8

[C]

8

27

16

[D] TRIO

7

[E]

11

7 11

[F] ob1

3

f

3 *f*

42

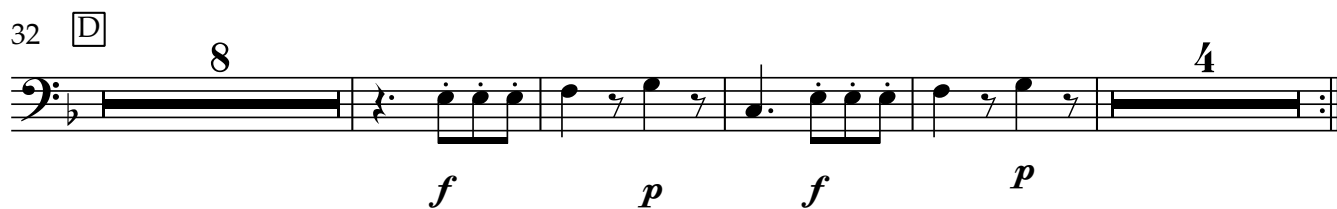
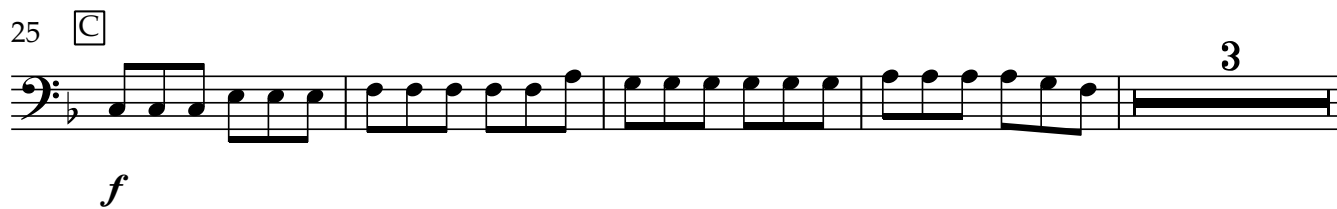
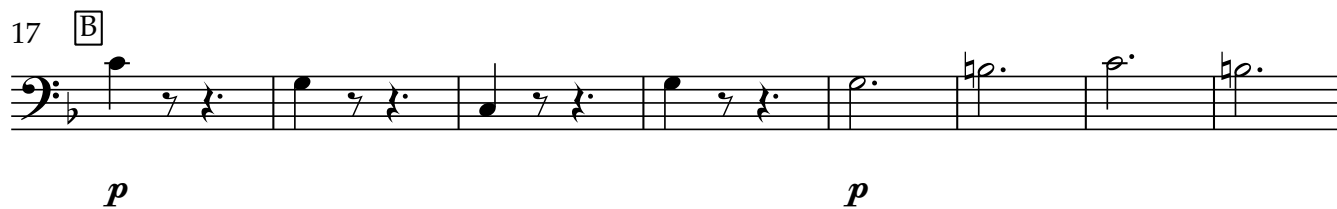
[G]

6

6

Bassoon 1

Allegro



Bassoon 1

48 E

56 F

63 G

67

76 H

82

88 I

95 J

104

108