

Sonata V

from *Six Sonates pour le Clavecin ou Piano forte, avec accompagnement d'un Violon ou Flute.*
Op. 16 (Amsterdam 1779)

Johann Christian Bach (1735 - 1782)

1. Allegro con spirito

Violon ou Flute

Clavecin
ou
Piano Forte

6

11

17

f

p

f

The image displays the first movement of Sonata V by Johann Christian Bach, titled '1. Allegro con spirito'. The score is written for Violon ou Flute and Clavecin ou Piano Forte. The key signature is D major (two sharps) and the time signature is common time (C). The score is divided into measures, with measure numbers 6, 11, and 17 indicated. The Violon ou Flute part is written on a single staff, while the Clavecin ou Piano Forte part is written on a grand staff (treble and bass clefs). The music features a variety of rhythmic patterns, including eighth and sixteenth notes, and rests. Dynamic markings such as *f* (forte) and *p* (piano) are present. The score is presented in a clean, professional layout with a white background and black musical notation.

23

tr

27

p

f

32

f

tr

35

p

f

p

tr

p

p

41

f

46

52

58

63

68

74

tr

tr

78

p

83

f

f

tr

87

p

f

p

p

f

p

93

f

f

2. Rondo. Allegretto

2. Rondo. Allegretto

6

11

16

21

p

f

FINE

FINE

26

31

36

42

46

50

f *p* *f* *p* *f*

56

p *f*

62

f *p* 1. 2. *D.C.* *f* *p* *D.C.*

Sonata V

**from *Six Sonates pour le Clavecin ou Piano forte, avec accompagnement d'un Violon ou Flute.*
Op. 16 (Amsterdam 1779)**

Johann Christian Bach (1735 - 1782)

1. Allegro con spirito

Violon ou Flute

Violon ou Flute

7

12

17

22

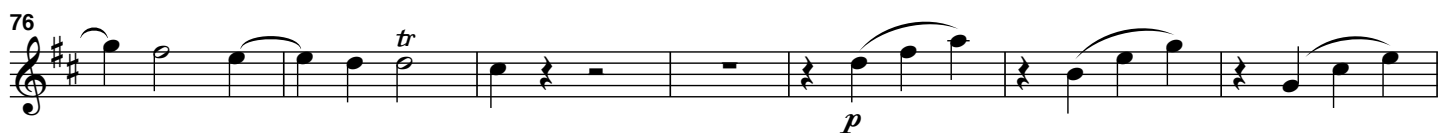
27

32

37

42

The image shows a musical score for Violon ou Flute, measures 1 through 48. The music is written in treble clef with a key signature of two sharps (F# and C#) and a common time signature (C). The score is divided into systems of five staves each. The first staff begins with a measure rest marked with a '2' above it. The notation includes various note values, rests, and dynamic markings such as *f* (forte), *p* (piano), and *tr* (trill). The piece concludes with a double bar line and repeat dots at the end of the 48th measure.



2. Rondo. Allegretto

8
f

15 *FINE*

3
[21-23]

29 *tr*

35 *D.C.* 8
[42-49]

50 *f* *p* *f*

55 4
[58-61] *f*

63 *p* 1. 2. *D.C.*