

Sinfonia No.10

Sol Maggiore
K.74

Wolfgang Amadeus Mozart

Allegro

9 *f*

19

25 *tr* *tr*

34 *f* *p* *tr* *tr* *f* *tr* *tr* *f*

44 *p* *f*

53 *4* *cresc.*

66 *f*

75

82 *tr* *tr* *p*

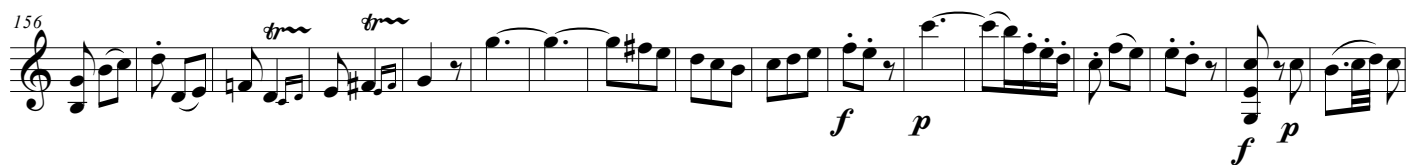
90 *f* *p* *f*

100 *p* *f* *p* *f*

108 *tr* *tr* *p* *tr* *tr* *f* *p* *f*

116 *Andante*

130 *f* *p* *f* *p* *f* *p* *f*



Sinfonia No.10

Sol Maggiore
K.74

Wolfgang Amadeus Mozart

Musical score for "The Rose Tree" in G major, 2/4 time. The score is for a single melodic line and includes measures 1 through 118. It features various musical notations such as treble clef, key signature (one sharp), time signature (2/4), and dynamic markings (p, f). The melody is characterized by eighth and sixteenth notes, often beamed together, and includes several triplet markings. The piece concludes with a final cadence in measure 118.