

## Viola

## Soler Flair

1.

Soler/Johnson

Allegro



14



33



43



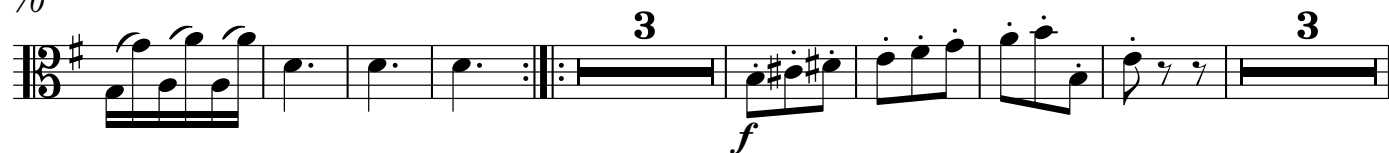
50



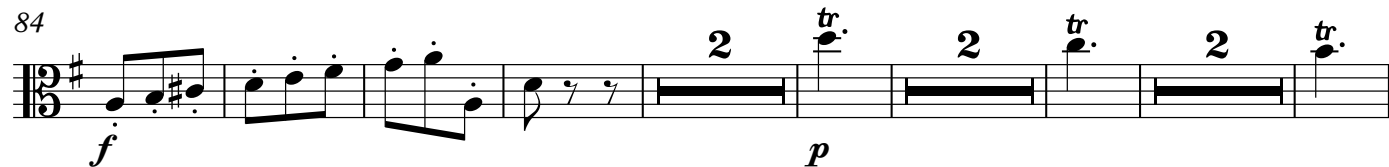
59



70



84



97



Viola

Viola

108



121



132



139



147

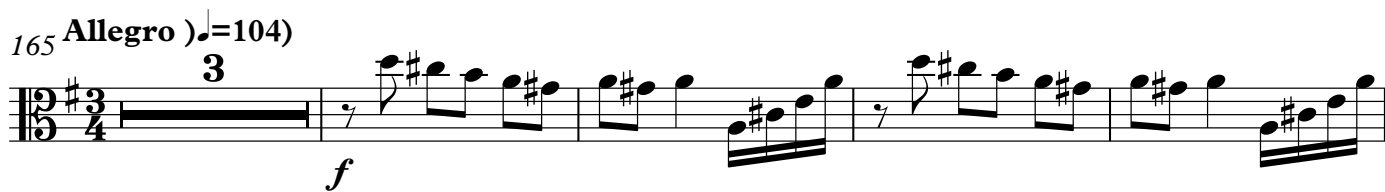


155

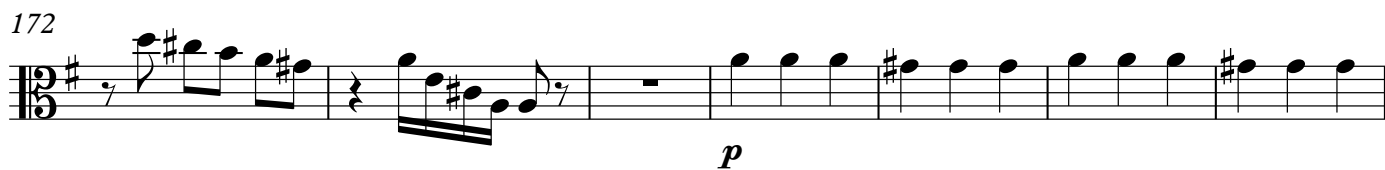


2.

165 Allegro ) ♩=104)



172



179



## Viola

3

187



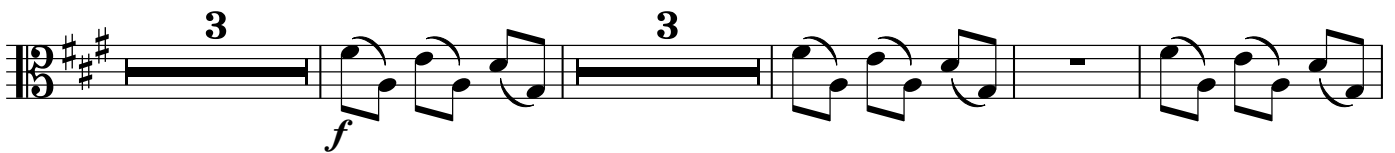
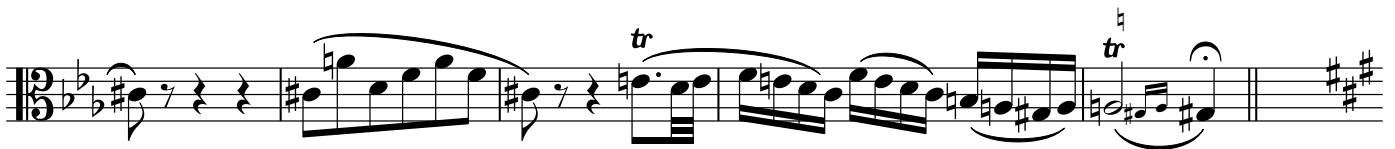
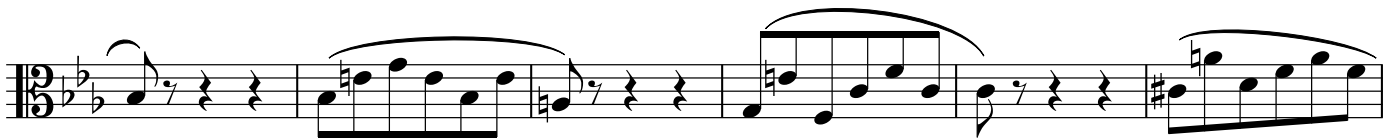
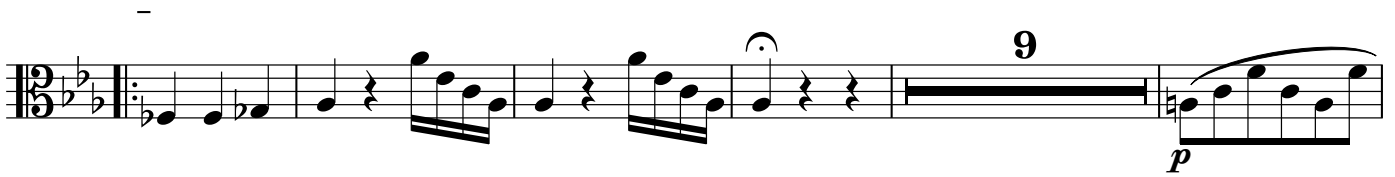
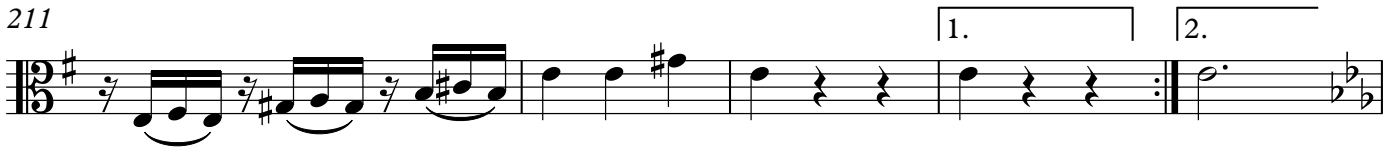
193



198



211



Viola

Viola  
3.

Allegretto (♩=82)

*f*

2

4

5

2

2

2

2

2

2

3

tr

2

3

tr

tr

Measures 1-6 of the Viola part. The music is in 3/8 time. Measures 1-3 feature a melodic line with eighth notes and slurs. Measures 4-6 continue the melodic development with slurs and a triplet in measure 5. The key signature has one flat (B-flat).

4.

**Allegro non tanto** (♩=108)

Measures 7-12 of the Viola part. The music is in 3/8 time. Measure 7 starts with a forte (f) dynamic. Measures 7-12 feature a continuous melodic line with slurs and ties. The key signature has one flat (B-flat).

Violin score for Viola, page 6. The music is in 12/8 time. The score consists of 11 staves. The key signature is one flat (B-flat). The score includes various musical notations such as eighth notes, quarter notes, half notes, and rests. Dynamic markings include *f* (forte) and *p* (piano). There are also markings for trills (*tr*) and fingerings (3, 6, 4, 2, 4). The score ends with a double bar line and a key signature change to two sharps (F# and C#).

Staff 1: *f* 3

Staff 2: *f* 6

Staff 3: *f* 4

Staff 4: *p* 2 *tr* 4

Staff 5: *f*

Staff 6: *p*

Staff 7: *f*

Staff 8: *p*

Staff 9: *f*

Staff 10: *p*

Staff 11: *f*

## Viola

7

