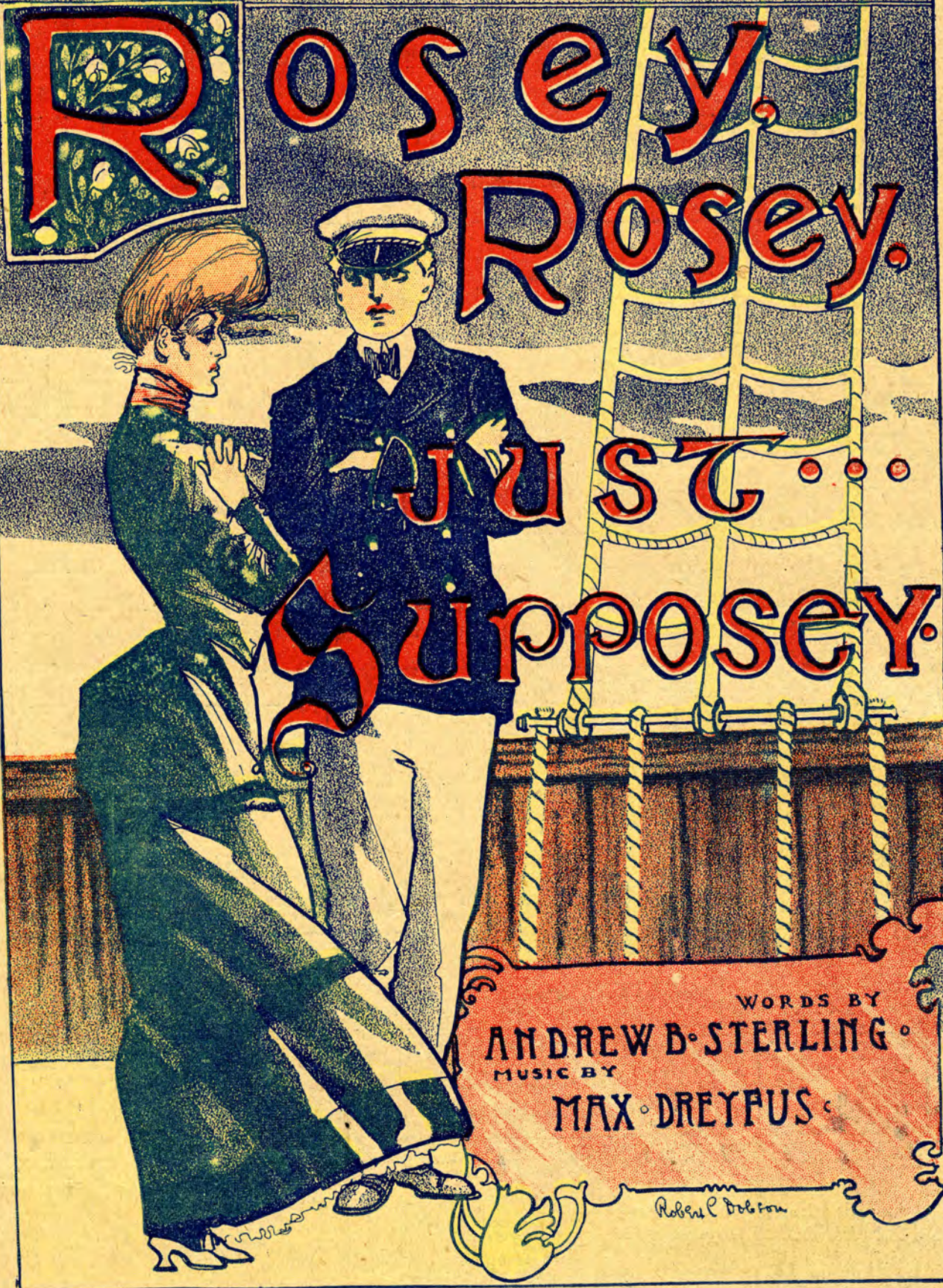


THE BOSTON HERALD SONG SHEET



WORDS BY  
ANDREW B. STERLING  
MUSIC BY  
MAX DREYFUS

Robert P. Dobson




# ROSEY, ROSEY, JUST SUPPOSEY.

Words by Andrew B. Sterling.

Music by Max Dreyfus.

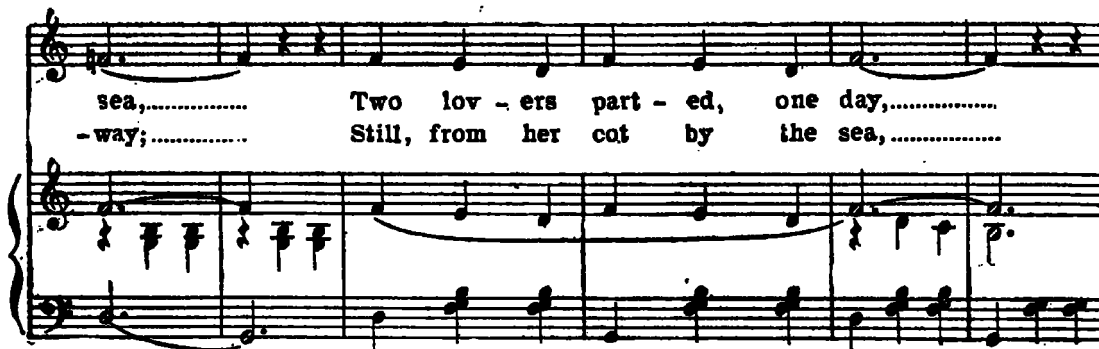


Musical notation for the piano introduction, consisting of a treble clef staff with a key signature of one sharp (F#) and a 2/4 time signature. The melody is simple and rhythmic. Below it is a grand staff (treble and bass clefs) with a dynamic marking of *mf* (mezzo-forte). The piano accompaniment features a steady bass line and chords in the right hand.



1 Down on the old I - ron Pier,..... Down by the surg - ing  
2. Just one more kiss and they part,..... Soon he is far a -

Musical notation for the first two lines of the song, including the vocal line and piano accompaniment. The vocal line is written in a treble clef with a key signature of one sharp and a 2/4 time signature. The piano accompaniment is in a grand staff.



sea,..... Two lov - ers part - ed, one day,.....  
- way;..... Still, from her cot by the sea,.....

Musical notation for the last two lines of the song, including the vocal line and piano accompaniment. The vocal line is written in a treble clef with a key signature of one sharp and a 2/4 time signature. The piano accompaniment is in a grand staff.

Sad were their hearts as could be..... She said, "I do love you,  
 She writes him, ev - er y day,..... Ten - der and sweet bil - let

Joe,..... I won - der if you love me!.....  
 doux;..... The ones lov - ers on - - ly know:.....

Ans - wer me now, ere you go..... Her eyes filled with ec - sta -  
 Start - ing with, "Joe I love you!"..... And end - ing with, "I love you,

- sy,..... As he sighed,..... And re - plied:.....  
 Joe!"..... And he sighs,..... And re - plies:.....

## CHORUS.

"Ro - sey, Ro - sey, Pretty Ro - sey, Ev'-ry Summer wind that blowsey Seems to

The first system of the chorus features a vocal line on a treble clef staff and a piano accompaniment on a grand staff (treble and bass clefs). The key signature has one sharp (F#) and the time signature is 2/4. The piano part includes a dynamic marking of *mf*.

say I love you, Jo - sie, love you true!..... Ro - sey, Ro - sey.

The second system continues the vocal line and piano accompaniment. The piano part features a dynamic marking of *f* and a fermata over the final chord.

Goodness know-sey, Deeper in my heart it grow-sey! Rosey, just sup-

The third system continues the vocal line and piano accompaniment. The piano part features a dynamic marking of *v* (fortissimo).

-po-sey. Jo-sie loves you too!..... too.....

The fourth system concludes the chorus with a first ending (marked '1.') and a second ending (marked '2.'). The piano part features a dynamic marking of *v*.