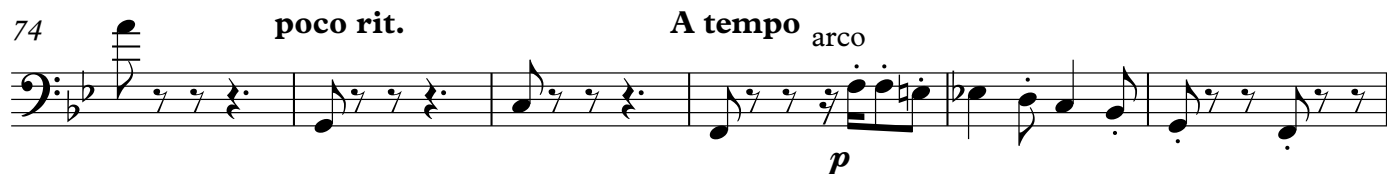
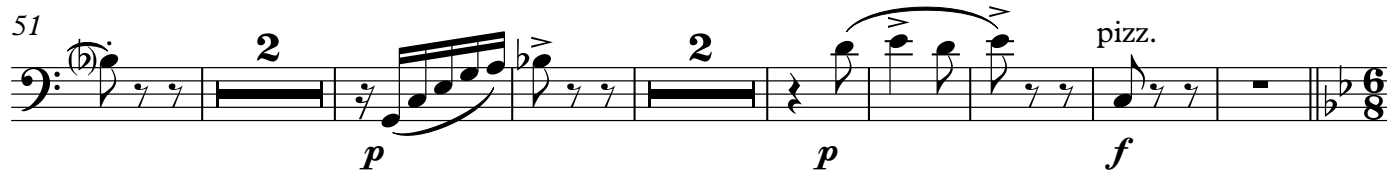
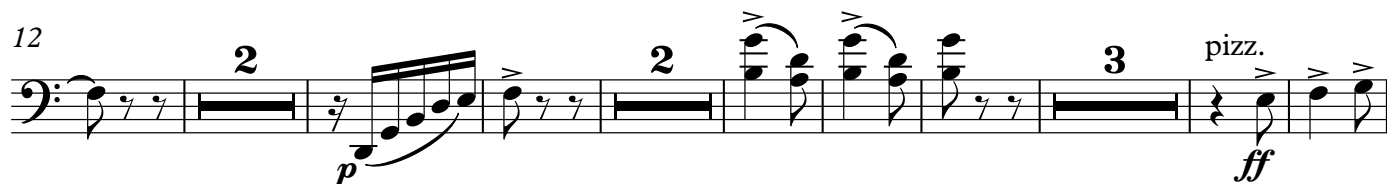


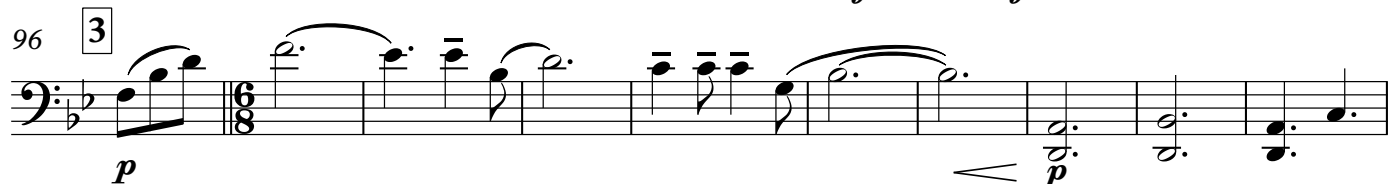
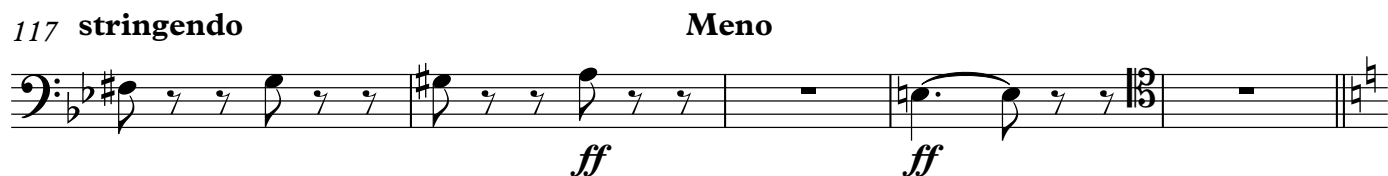
Violoncello

La Boheme Suite No. 1

Puccini/Johnson

Allegro vivace



*p**f**p**f**f**p**p**p**pp* cresc.*ff**ff**p**mf**p*

arco

f

2

2

2

2

2

146 pizz. *f* 2 arco 2 2

153 6 pizz. *ff* 4 pizz. *ff*

163 3 div. arco *pp*

171 2 pizz. *ff* arco *ppp* 2 pizz. *pp*

180 7 stringendo 8 Allegro arco *f*

188 2 *p*

196 *p* 3

201

205 pizz. 9 arco

ff *p*

211 *p*

216 pizz. 2 arco *mf*

222 10 pizz. 2 *f*

230 arco *f* *f*

234 pizz. 2 2

239 11 arco *p*

245 *mf*

251 **stringendo** pizz. arco *pp*

256 **A tempo**

264



271



277

282 **13**

288

294 **poco rall.**

297



310



323

14

335 **quasi** **Tempo**
rit.

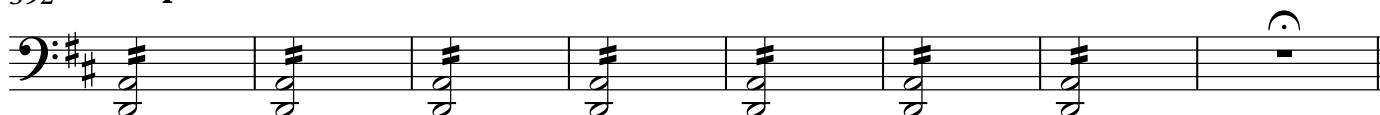
345 15



358



371 16

380 **quasi** **Tempo**
rit.392 **Poco più mosso***cresc. molto*400 **Andante moderato**
pizz.*pp*406 **rit.** **solo arco**
mp

17

Un poco più mosso
tutti pizz.*pp*

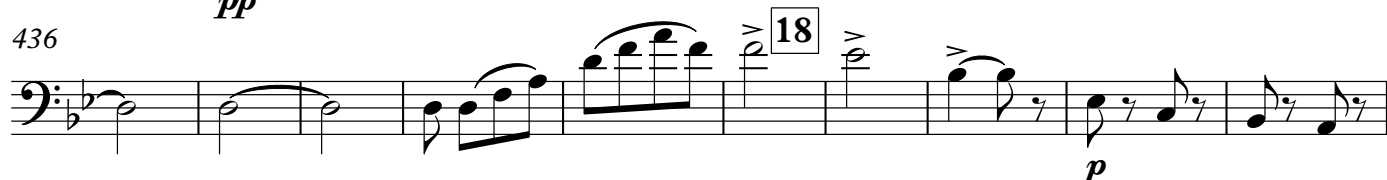
415



424



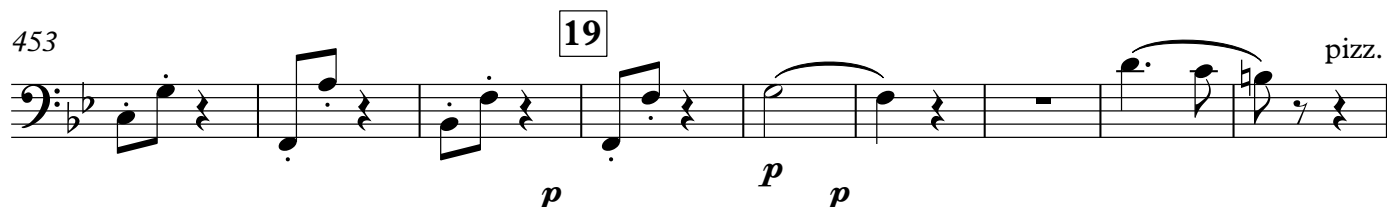
436



446



453



462 poco rit.

A tempo



471

poco rit.

3

f



479

tutti pizz.

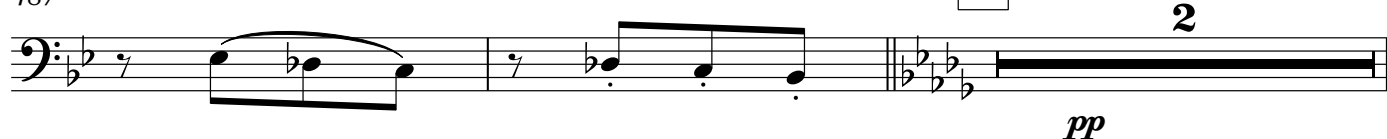
arco rall.



487 rall. molto

20 Andantino affettuoso

2



491 *solo*
mp

498 *4*

508 *rall.*

512 *Tempo*
tutti *solo*
cresc. *f* >

522 *tutti* *pp* *21 Andante sostenuto* *2* *p*

531 *pizz.* *f* *22 Andante lento* *arco* *pp*

536 *allargando* *p* *f*

541 *pizz.* *rit.* *arco largamente* *fff* *mf* *p* *f*

545 *poco allargando* *pp* *f* *p*

549 *pizz.* **23** *arco* *pp* *cresc.* *f* ³

553 *cresc.* *ff* *mf* ³ *tutti* *< mf* ³ **24** *allargando sempre*

558 *rall.* *mp* ³ *p*

561 **Allegro focoso** ³ *sfz* *sfz*

568 **25** *ff*

573 **26** *ff*

576

581 *f* *ff*

586 **27** *div.*

587 pizz.

p

591

ff

596 28

p

600 **Lo stesso movimento**
 arco pizz. arco

p

608 poco rit. Tempo pizz.

p *pp*

614 arco pizz.

p

618 29
 arco pizz. arco

p *sfz* *p* *sfz*

625 pizz. arco

mf *p*

631 pizz. poco rall.

p

636 **Tempo** 30 arco *p* 31

641 **stringendo** pizz. *p* *sfz*

647 *sfz* *p* *cresc.*

652

657 32 arco *ff*

662 **allarg. e sostenendo** *ff*