

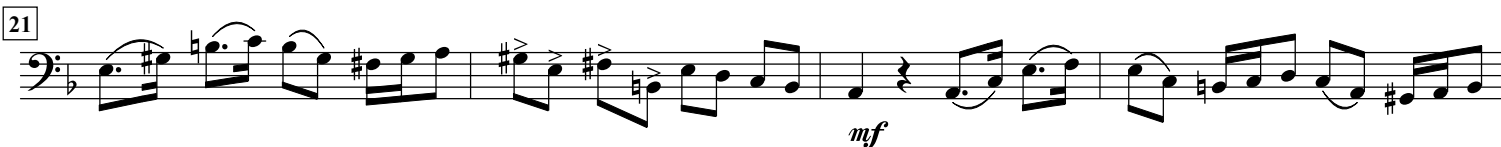
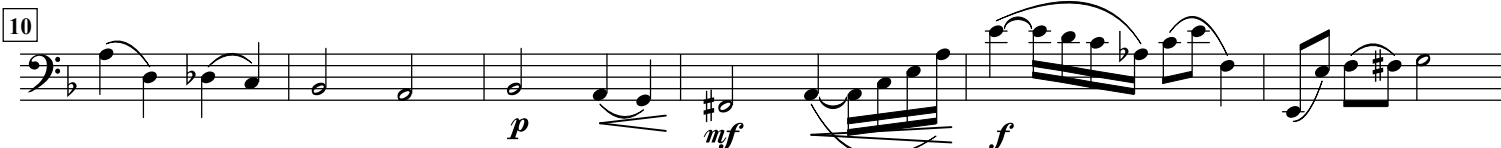
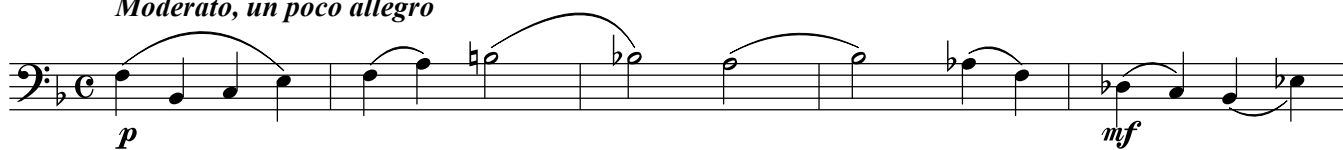
Kammertrio No. 1

arr. Hans Jørgen Messerschmidt

Richard Kursch

Moderato, un poco allegro

Euphonium



Euphonium

62 *p* *f* *Vivace, ma non troppo*

67 *p* *ritard.* *p* Scherzo *p*

74

86 *mf* *p* *G.P. G.P.*

98 *pp*

110

121 *p*

136 *mf* *f* *pp* *Poco meno mosso*

147 *f* *Fine* *p*

158 1. 2. *mf*

172

183 *f* *p* *Larghetto* *Scherzo D. C. al Fine* *p*

189 *pp*

Detailed description of the musical score: The score is for an Euphonium part, spanning measures 62 to 189. It begins in a key with one flat (B-flat major or D minor) and a common time signature. Measures 62-67 feature a melodic line with a crescendo and a change from piano (p) to forte (f). At measure 67, the tempo changes to 'Vivace, ma non troppo' and the key signature changes to two flats (B-flat major or D minor). Measures 67-74 show a melodic line with a 'ritard.' (ritardando) marking, returning to piano (p). At measure 74, the tempo changes to 'Scherzo' and the key signature changes to three flats (B-flat major or D minor). Measures 74-86 continue the Scherzo with a melodic line, marked piano (p). At measure 86, the dynamics change to mezzo-forte (mf) and piano (p), with 'G.P.' (Grave) markings. Measures 86-98 continue with a melodic line, marked piano (p). At measure 98, the dynamics change to pianissimo (pp). Measures 98-110 continue with a melodic line, marked pianissimo (pp). At measure 110, the dynamics change to mezzo-forte (mf). Measures 110-121 continue with a melodic line, marked mezzo-forte (mf). At measure 121, the dynamics change to piano (p). Measures 121-136 continue with a melodic line, marked piano (p). At measure 136, the dynamics change to mezzo-forte (mf) and forte (f), with 'G.P.' (Grave) markings. Measures 136-147 continue with a melodic line, marked mezzo-forte (mf) and forte (f). At measure 147, the dynamics change to forte (f) and piano (p), with a 'Fine' marking. Measures 147-158 continue with a melodic line, marked forte (f) and piano (p). At measure 158, the dynamics change to mezzo-forte (mf). Measures 158-172 continue with a melodic line, marked mezzo-forte (mf). At measure 172, the dynamics change to mezzo-forte (mf). Measures 172-183 continue with a melodic line, marked mezzo-forte (mf). At measure 183, the tempo changes to 'Larghetto' and the key signature changes to three flats (B-flat major or D minor). Measures 183-189 continue with a melodic line, marked forte (f) and piano (p). At measure 189, the dynamics change to pianissimo (pp).

Euphonium

196

mp *mf*

203

mf *f*

210

mp

214

f *f*

221

mp

229

f *mp* *Allegro animato*

238

ff

246

mp

251

ff

258

mp *ff* *mf*

268

mp

275

ff

283

f

Euphonium

294

mp

300

307

fff

314

mp *mf*

321

ff *p* *ff*