

Violino I

Sonata da Camera

op. 2 No. 1

Arcangelo Corelli

Preludio (Largo)



8



Allemanda Largo



5



9



13



Corrente Allegro



10



21



Gavotta Allegro



5



Violino I

Sonata da Camera

op. 2 No. 2

Arcangelo Corelli

Allemanda Adagio

First system (measures 1-4): Treble clef, key of B-flat major, common time. Measure 1 starts with a quarter rest, followed by eighth and sixteenth notes. Measure 2 contains a sharp sign (F#) above the staff. Measure 3 contains a sharp sign (F#) below the staff. Measure 4 contains a sharp sign (F#) above the staff.

Second system (measures 5-8): Measure 5 starts with a measure rest, followed by eighth and sixteenth notes. Measure 6 contains a sharp sign (F#) above the staff. Measure 7 contains a sharp sign (F#) below the staff. Measure 8 contains a sharp sign (F#) above the staff.

Third system (measures 9-12): Measure 9 starts with a measure rest, followed by eighth and sixteenth notes. Measure 10 contains a sharp sign (F#) above the staff. Measure 11 contains a sharp sign (F#) below the staff. Measure 12 contains a sharp sign (F#) above the staff.

Fourth system (measures 13-16): Measure 13 starts with a measure rest, followed by eighth and sixteenth notes. Measure 14 contains a sharp sign (F#) above the staff. Measure 15 contains a sharp sign (F#) below the staff. Measure 16 contains a sharp sign (F#) above the staff.

Fifth system (measures 17-19): Measure 17 starts with a measure rest, followed by eighth and sixteenth notes. Measure 18 contains a sharp sign (F#) above the staff. Measure 19 contains a sharp sign (F#) below the staff.

Corrente Allegro

First system (measures 1-4): Treble clef, key of B-flat major, 3/4 time. Measure 1 starts with a quarter rest, followed by eighth and sixteenth notes. Measure 2 contains a sharp sign (F#) above the staff. Measure 3 contains a sharp sign (F#) below the staff. Measure 4 contains a sharp sign (F#) above the staff.

Second system (measures 5-8): Measure 5 starts with a measure rest, followed by eighth and sixteenth notes. Measure 6 contains a sharp sign (F#) above the staff. Measure 7 contains a sharp sign (F#) below the staff. Measure 8 contains a sharp sign (F#) above the staff.

Third system (measures 9-12): Measure 9 starts with a measure rest, followed by eighth and sixteenth notes. Measure 10 contains a sharp sign (F#) above the staff. Measure 11 contains a sharp sign (F#) below the staff. Measure 12 contains a sharp sign (F#) above the staff.

Fourth system (measures 13-16): Measure 13 starts with a measure rest, followed by eighth and sixteenth notes. Measure 14 contains a sharp sign (F#) above the staff. Measure 15 contains a sharp sign (F#) below the staff. Measure 16 contains a sharp sign (F#) above the staff.

Fifth system (measures 17-20): Measure 17 starts with a measure rest, followed by eighth and sixteenth notes. Measure 18 contains a sharp sign (F#) above the staff. Measure 19 contains a sharp sign (F#) below the staff. Measure 20 contains a sharp sign (F#) above the staff.

Sixth system (measures 21-24): Measure 21 starts with a measure rest, followed by eighth and sixteenth notes. Measure 22 contains a sharp sign (F#) above the staff. Measure 23 contains a sharp sign (F#) below the staff. Measure 24 contains a sharp sign (F#) above the staff.

Seventh system (measures 25-28): Measure 25 starts with a measure rest, followed by eighth and sixteenth notes. Measure 26 contains a sharp sign (F#) above the staff. Measure 27 contains a sharp sign (F#) below the staff. Measure 28 contains a sharp sign (F#) above the staff.

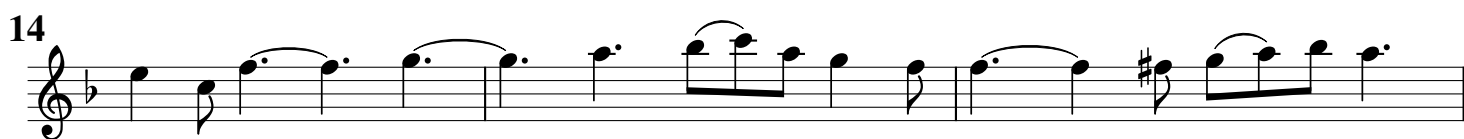
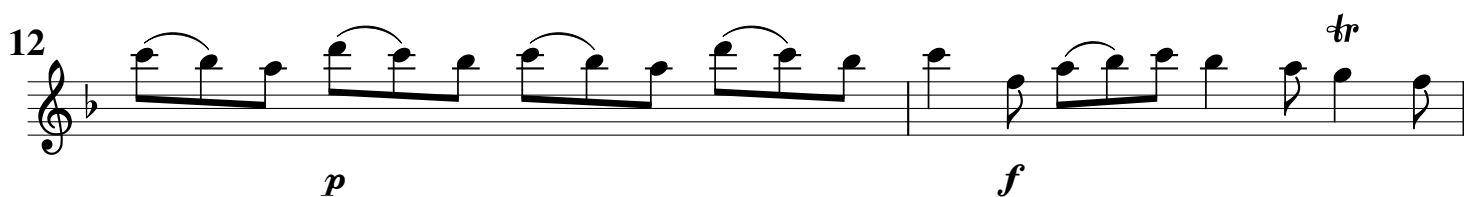
Eighth system (measures 29-32): Measure 29 starts with a measure rest, followed by eighth and sixteenth notes. Measure 30 contains a sharp sign (F#) above the staff. Measure 31 contains a sharp sign (F#) below the staff. Measure 32 contains a sharp sign (F#) above the staff.

Ninth system (measures 33-36): Measure 33 starts with a measure rest, followed by eighth and sixteenth notes. Measure 34 contains a sharp sign (F#) above the staff. Measure 35 contains a sharp sign (F#) below the staff. Measure 36 contains a sharp sign (F#) above the staff.

Tenth system (measures 37-40): Measure 37 starts with a measure rest, followed by eighth and sixteenth notes. Measure 38 contains a sharp sign (F#) above the staff. Measure 39 contains a sharp sign (F#) below the staff. Measure 40 contains a sharp sign (F#) above the staff.

Eleventh system (measures 41-44): Measure 41 starts with a measure rest, followed by eighth and sixteenth notes. Measure 42 contains a sharp sign (F#) above the staff. Measure 43 contains a sharp sign (F#) below the staff. Measure 44 contains a sharp sign (F#) above the staff.

Giga Allegro



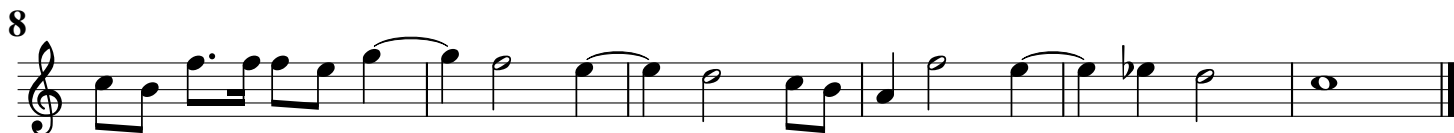
Violino I

Sonata da Camera

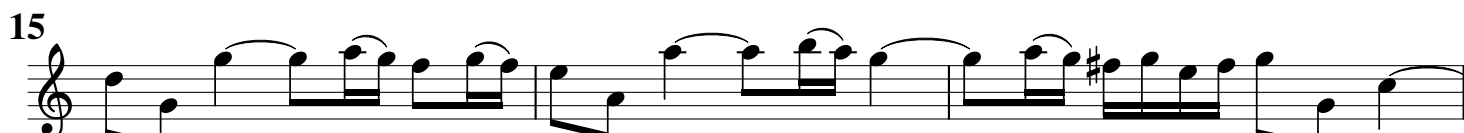
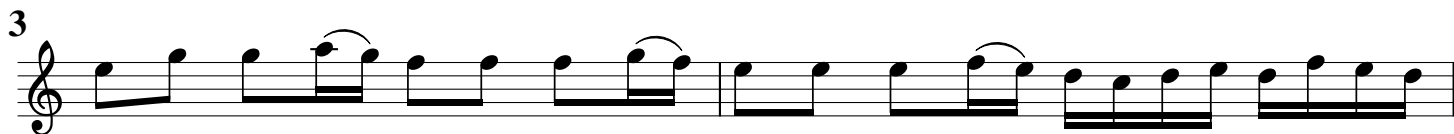
op. 2 No. 3

Arcangelo Corelli

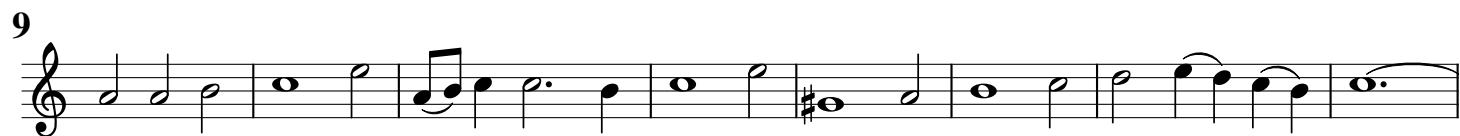
Preludio Largo



Allemanda Allegro



Adagio



Allemanda Presto



Violino I

Sonata da Camera

Op. 2 No. 4

Arcangelo Corelli

Preludio Adagio



Allemanda Presto

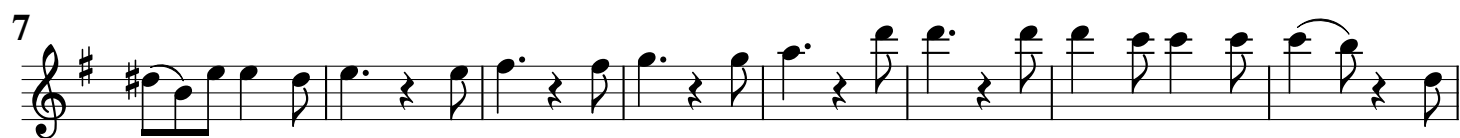


Grave

Adagio

*p*

Giga Allegro



Violino I

Sonata da Camera

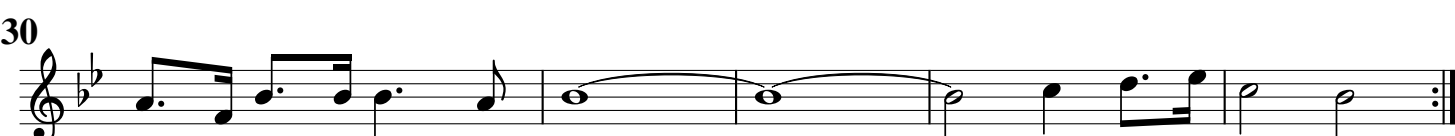
op. 2 No. 5

Arcangelo Corelli

Preludio Adagio



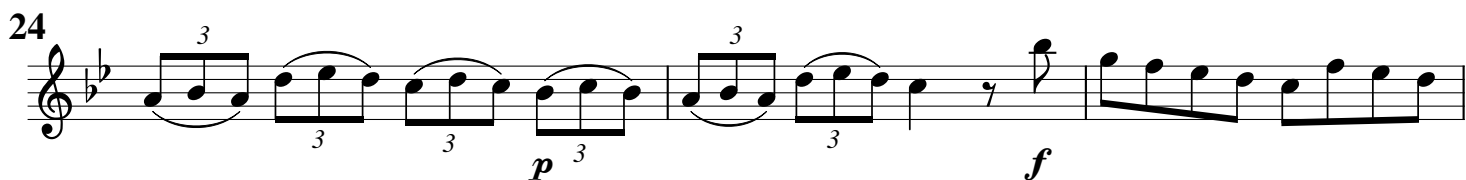
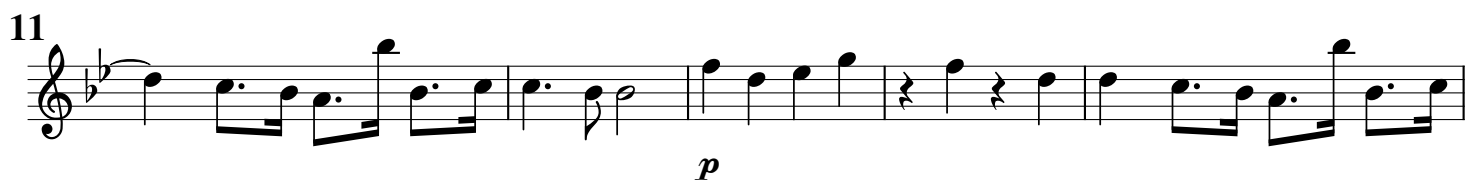
Allemanda Allegro



Sarabanda Adagio



Tempo di Gavotta Allegro



Violino I

Sonata da Camera

op. 2 No. 6

Arcangelo Corelli

Allemanda Largo

Allemanda Largo

5

9

13

17

p

This section contains the first five staves of the Allemanda Largo. The first staff begins with a treble clef, a key signature of two flats (B-flat and E-flat), and a common time signature (C). The music is written in a single system. The second staff is marked with a measure rest '5'. The third staff is marked with a measure rest '9'. The fourth staff is marked with a measure rest '13'. The fifth staff is marked with a measure rest '17' and ends with a double bar line. A dynamic marking of *p* (piano) is placed below the fifth staff.

Corrente Allegro

Corrente Allegro

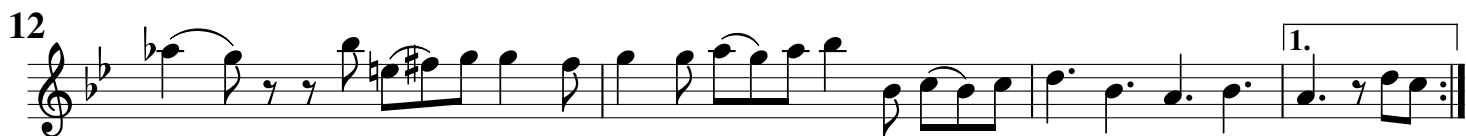
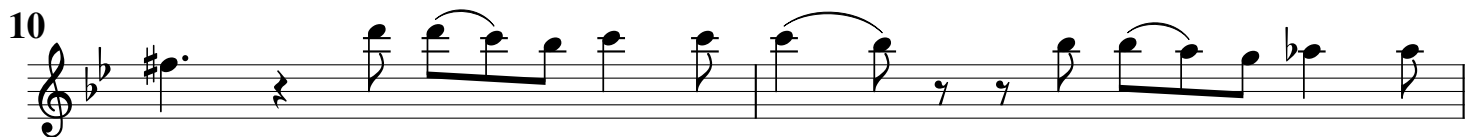
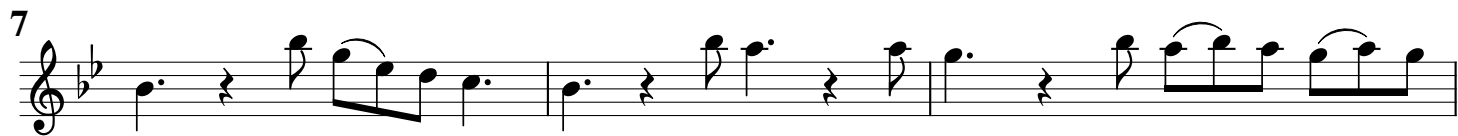
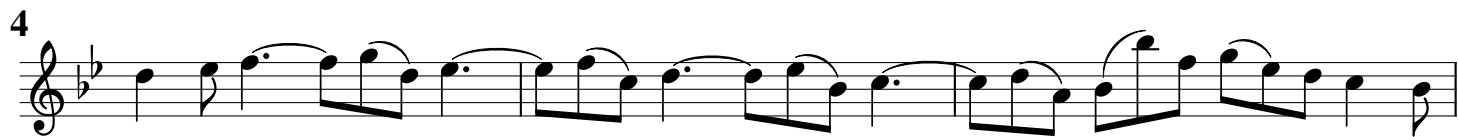
6

13

19

This section contains the next three staves of the Corrente Allegro. The first staff begins with a treble clef, a key signature of two flats (B-flat and E-flat), and a 3/4 time signature. The music is written in a single system. The second staff is marked with a measure rest '6'. The third staff is marked with a measure rest '13'. The fourth staff is marked with a measure rest '19' and ends with a double bar line.

Giga Allegro



Violino I

Sonata da Camera

op. 2 No. 7

Arcangelo Corelli

Preludio Adagio



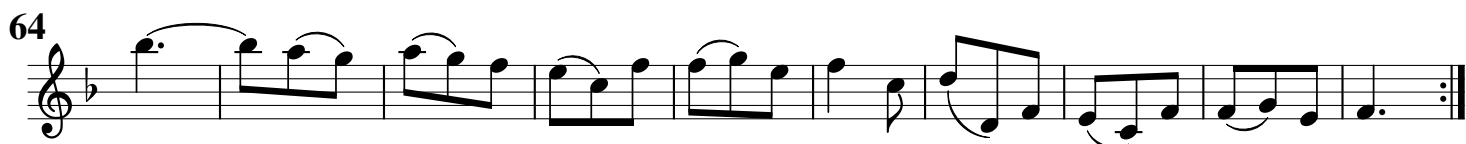
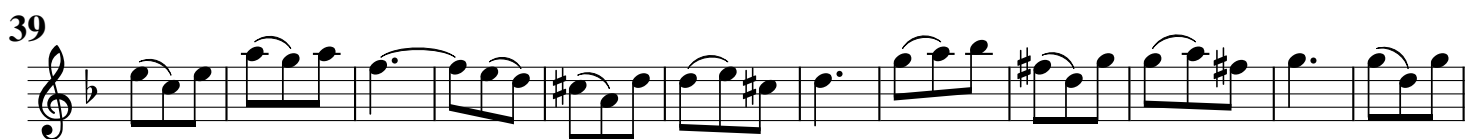
Allemanda Allegro



Corrente Allegro



Giga Allegro



Violino I

Sonata da Camera

op. 2 No. 8

Arcangelo Corelli

Preludio Adagio

6

12

Allemanda Largo

5

10

16

21

25

28

32

p

f

1.

2.

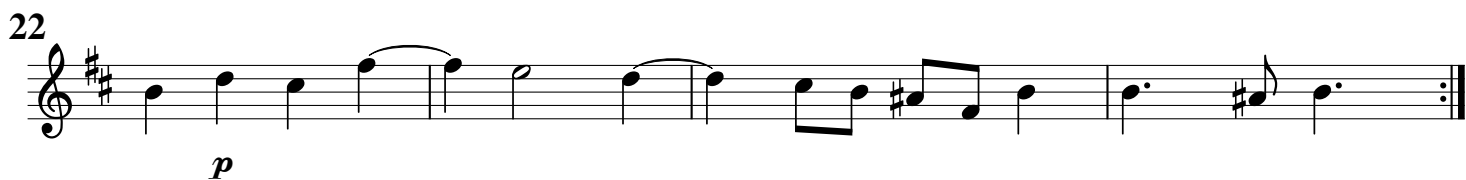
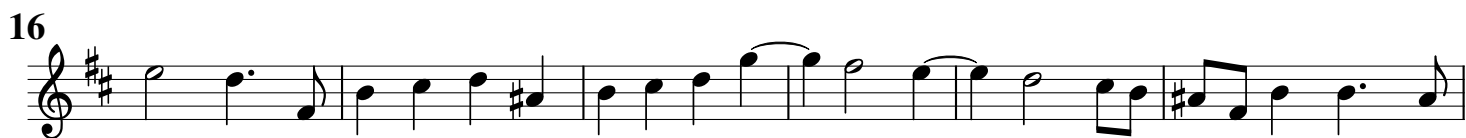
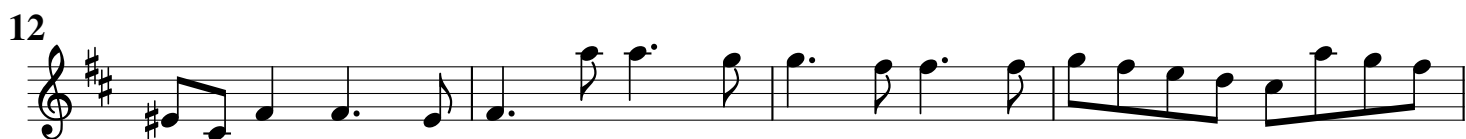
tr

p

Tempo di Sarabanda Adagio



Tempo di Gavotta Allegro



Violino I

Sonata da Camera

op. 2 No. 9

Arcangelo Corelli

Allemanda Largo

Allemanda Largo

Measures 1-18:

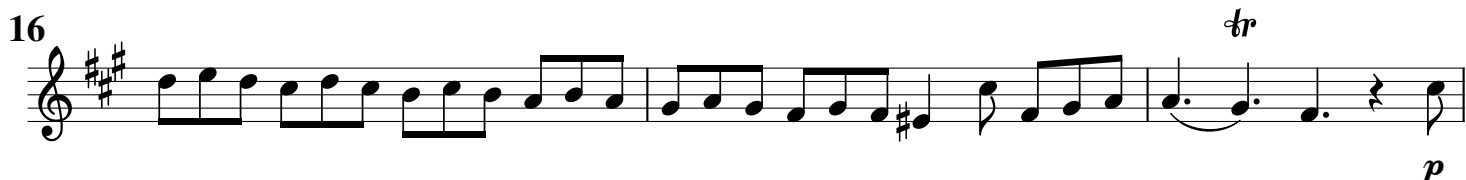
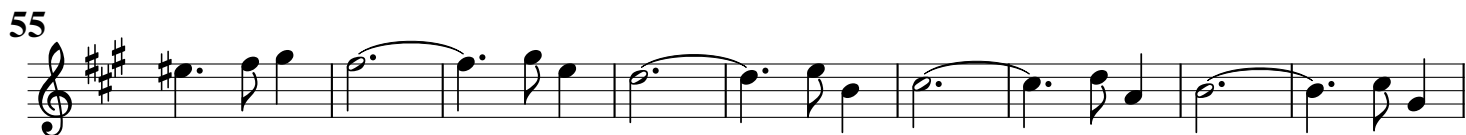
- Measure 1: Treble clef, key signature of two sharps (F# and C#), common time (C). The melody begins with a quarter rest, followed by a quarter note D4, an eighth note E4, a quarter note F#4, and a quarter note G4.
- Measures 2-3: Continuation of the melody with eighth and quarter notes.
- Measure 4: A repeat sign (double bar line with two dots) is present.
- Measures 5-6: Continuation of the melody.
- Measures 7-8: Continuation of the melody.
- Measures 9-10: Continuation of the melody.
- Measures 11-12: Continuation of the melody.
- Measures 13-14: Continuation of the melody.
- Measures 15-16: Continuation of the melody.
- Measures 17-18: Continuation of the melody, ending with a repeat sign.

Giga Allegro

Giga Allegro

Measures 1-45:

- Measure 1: Treble clef, key signature of two sharps (F# and C#), 3/4 time. The melody begins with a quarter note D4, a quarter note E4, and a quarter note F#4.
- Measures 2-3: Continuation of the melody.
- Measures 4-5: Continuation of the melody.
- Measures 6-7: Continuation of the melody.
- Measures 8-9: Continuation of the melody.
- Measures 10-11: Continuation of the melody.
- Measures 12-13: Continuation of the melody.
- Measures 14-15: Continuation of the melody.
- Measures 16-17: Continuation of the melody.
- Measures 18-19: Continuation of the melody.
- Measures 20-21: Continuation of the melody.
- Measures 22-23: Continuation of the melody.
- Measures 24-25: Continuation of the melody.
- Measures 26-27: Continuation of the melody.
- Measures 28-29: Continuation of the melody.
- Measures 30-31: Continuation of the melody.
- Measures 32-33: Continuation of the melody.
- Measures 34-35: Continuation of the melody.
- Measures 36-37: Continuation of the melody.
- Measures 38-39: Continuation of the melody.
- Measures 40-41: Continuation of the melody.
- Measures 42-43: Continuation of the melody.
- Measures 44-45: Continuation of the melody.



Violino I

Sonata da Camera

op. 2 No. 10

Arcangelo Corelli

Preludio Adagio



Allemanda Allegro



Sarabanda Largo



Corrente Allegro



Violino I

Sonata da Camera

op. 1 No. 11

Arcangelo Corelli

Preludio Adagio



Allemanda Presto



Giga Allegro



Violino I

Sonata da Camera

Op. 2 No. 12

Arcangelo Corelli

Ciacona Largo

12

22

29

39

50

63

72

79

92

100

109

118

p