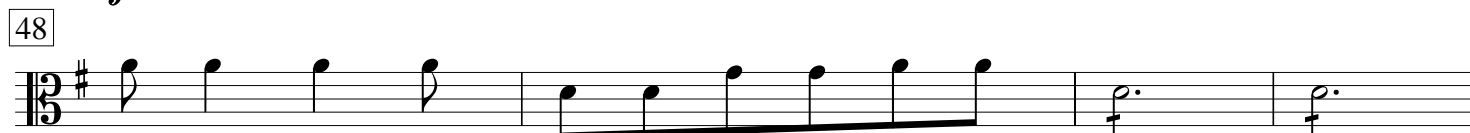
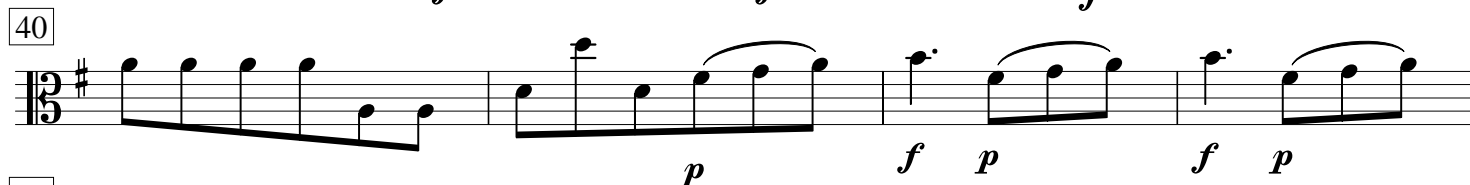
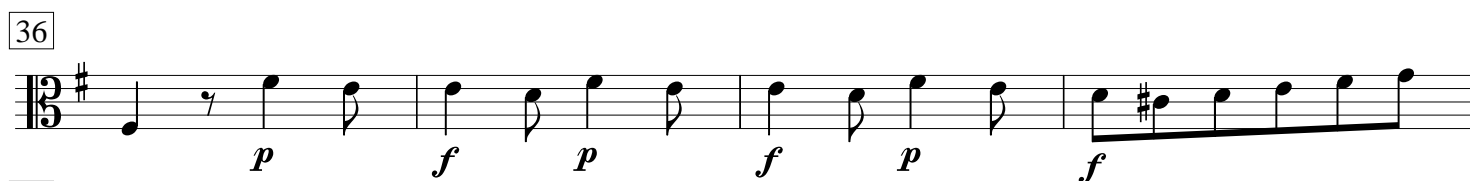
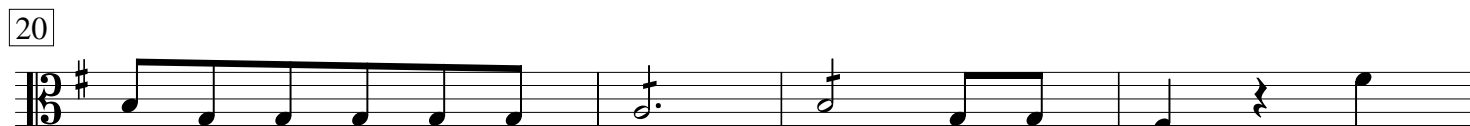
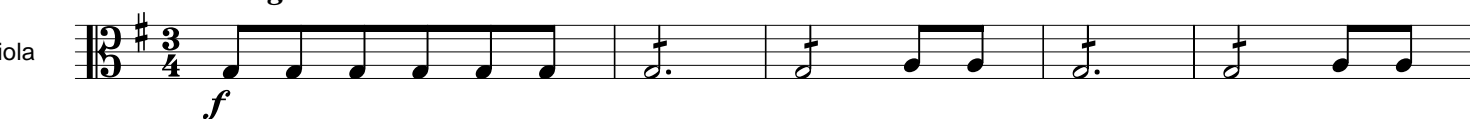


# Sinfonia in G

Anton Zimmermann

*Allegro*

Viola



52 1. 2. 3

58

62

66

70

75

80

84

88

92 *p*

97 *f p f p f p*

102 *f p f p f p*

106 *f p f*

110

*Andante*

7 *p*

13

18

22

26 1. 2.

31

36

41

45

49

53

57

61

3

## Menuetto

Measures 1-16 of the Menuetto. The key signature is one sharp (F#) and the time signature is 3/4. The piece begins with a rest in measure 1, followed by a melody starting in measure 2. Dynamics include *f* (forte) in measure 2, *p* (piano) in measure 11, and *f* in measure 16. The piece concludes with a repeat sign in measure 16.

## Trio Turco

Measures 1-9 of the Trio Turco. The key signature is one sharp (F#) and the time signature is 3/4. The piece consists of a continuous sequence of chords. It concludes with a repeat sign in measure 9.

Finale *Presto*

Menuetto da capo

Measures 1-36 of the Finale *Presto*. The key signature is one sharp (F#) and the time signature is 6/8. The piece features a fast, rhythmic melody. Dynamics include *p* (piano) in measures 10, 26, and 36, and *f* (forte) in measures 15, 20, 31, and 36. The piece concludes with a repeat sign in measure 36.