

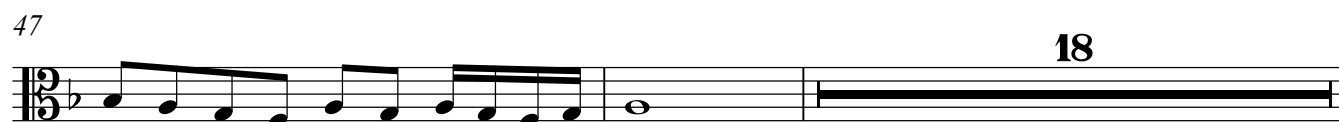
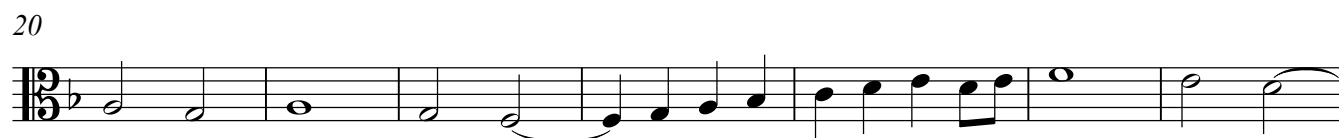
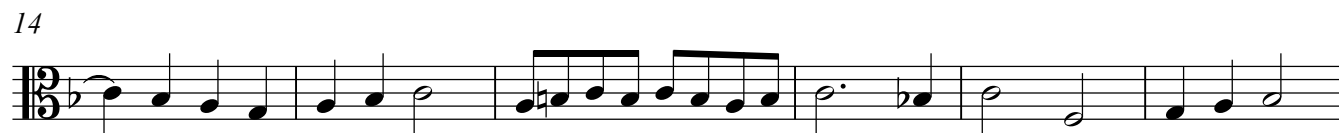
Tenor Viol 2

# Tiento del Sexto Tono con primera y segunda parte

Primera Parte.

Antonio de Cabezon (1510-1566)

$\text{♩} = 88$



67



73



79



87



94



101



107



115



121



128



135



141



148



155



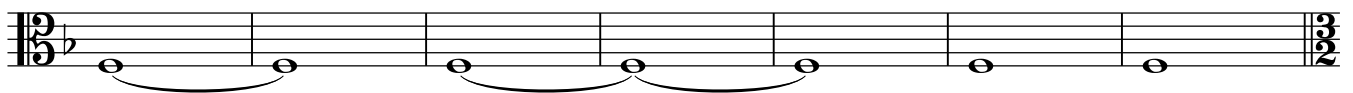
162



168



172



# Segunda Parte

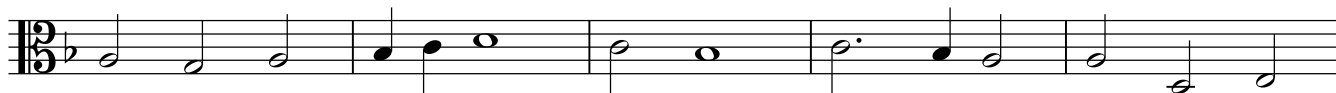
## Tenor Viol 2

4

179



186



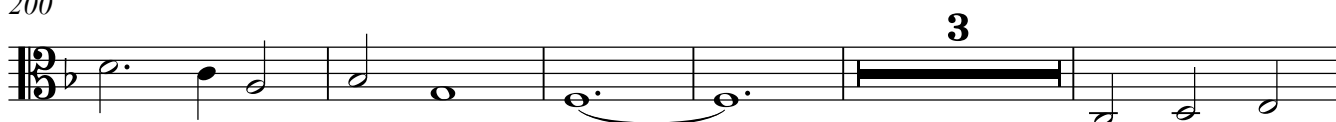
191



195



200



208



212



♩ = 160

218



227



234



241



248



253



256

