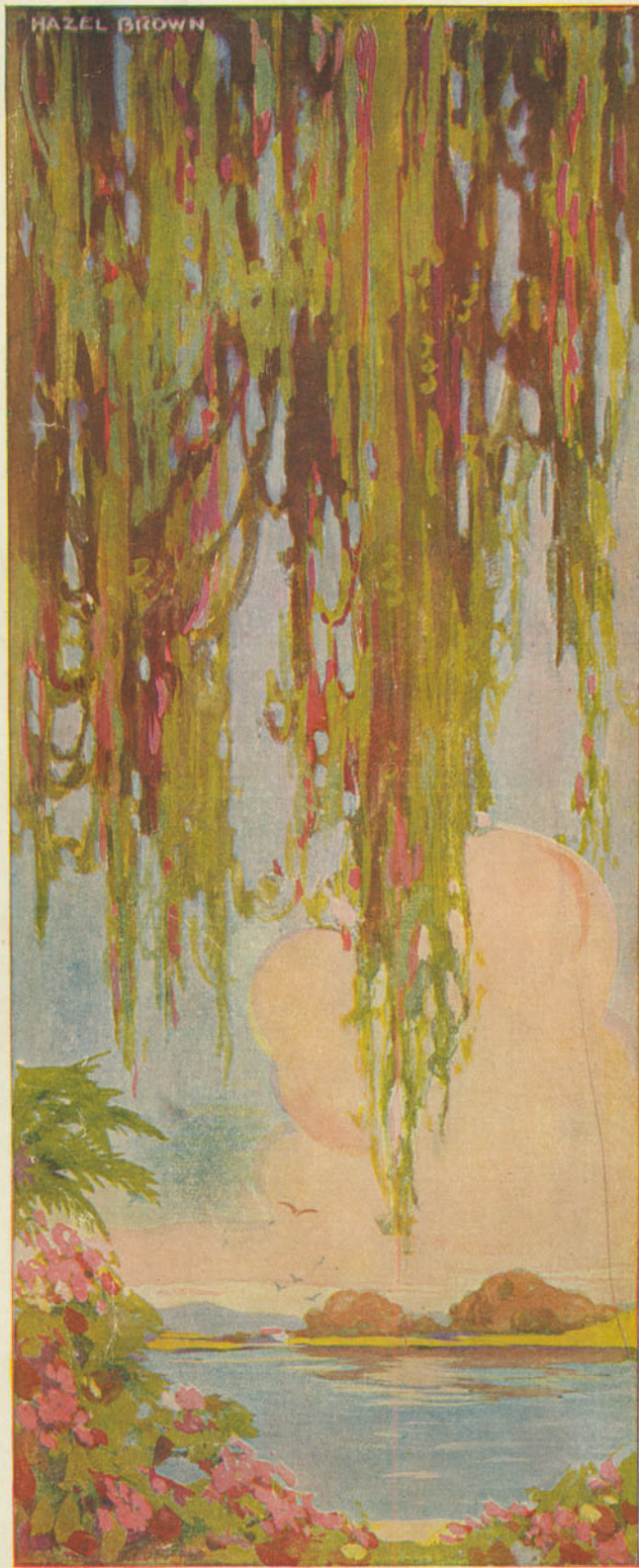


Luella G. Cowen



SUNNY FLORIDA

WORDS BY DAN BLANCO
MUSIC BY ERWIN R. SCHMIDT
COMPOSER OF "CAROLINA SUNSHINE"

Ted Browne Music Co.
325 MADISON STREET
Chicago

ASK YOUR DEALER FOR A
PLAYER-ROLL OR PHONOGRAPH
RECORD OF THIS PIECE

SUNNY FLORIDA

Words by
DAN BLANCO.

Music by
ERWIN R. SCHMIDT.
Composer of "Carolina Sunshine"

Valse Moderato.

TILL READY.

mf

p

The piano introduction is in 3/4 time, starting with a treble clef and a key signature of two flats. It features a melody in the right hand and a bass line in the left hand. The melody begins with a quarter note G4, followed by a quarter note A4, and then a quarter note Bb4. The bass line starts with a half note G3, followed by a half note F3. The piece concludes with a double bar line and repeat dots.

Voice.

Flo-ri-da, land of sun - shine, land of green fields, sway-ing palms, I am
Flo-ri-da, I am long - ing to be in your lov-ing arms. Basking

p

The vocal line is in 3/4 time, starting with a treble clef and a key signature of two flats. The lyrics are written below the notes. The piano accompaniment is in the same key and time, with a melody in the right hand and a bass line in the left hand. The piece concludes with a double bar line and repeat dots.

long - ing for you oft - times how I love your South-ern charms.
in your radiant sun - shine or be - neath your sway-ing palms.

The vocal line continues with the second verse. The piano accompaniment provides harmonic support for the vocal line. The piece concludes with a double bar line and repeat dots.

poco rall.

O-cean breezes waft-ing thru' the trees, Seem to breathe your sweetest melo-dies.
List-ning to the song-birds in the trees, Har-mo-ny with na-ture's mel-o-dies.

Soft

p poco rall.

poco rall.

The vocal line concludes with the third verse. The piano accompaniment features a melodic line in the right hand and a bass line in the left hand. The piece concludes with a double bar line and repeat dots.

CHORUS.

Man-do-lins are play - ing, mel - o - dies con - vey - ing Breath - ing love's sweet tune,

p-f

Sun-kissed are the flow - ers, In their gold - en bow - ers, While the song - birds croon.

When all na - ture's sleep - ing, Sil - v'ry moon is peep - ing, Thru heaven's cor - ri - dor,

An - gel hands car - ressed you, Na - ture sure has blessed you, Sun - ny Flo - ri - da

poco rall. *a tempo* *rall.*

da. Flo - ri - da.

cresc. e accel. *mf* *f* *ff* *f*

THE MOST TALKED OF INSTRUMENTAL PIECE OF RECENT YEARS

"SABBATH CHIMES"

THE GREATEST NOVELTY COMPOSITION ON THE MARKET!

INSIST ON GETTING "SABBATH CHIMES" By F. HENRI KLIKMAN!

This wonderfully clever little piece has caused more favorable talk and comment than any piece of music published in recent years. The clever arrangement of the chords, when properly played, give an exact imitation of church chimes. Be the first in your circle of friends to get this piece, get it learned to perfection, and we promise you, you will cause a genuine sensation the first time you play it for your friends.

We show you below extracts from the portion of this piece. Try over and we know you will want a complete copy at once.

gva
Slowly

f *Chimes

To obtain the proper "Chimes" effect, strike each chord firmly and keep loud pedal down throughout.

HERE IS A PORTION OF THE SECOND MOVEMENT

Andante con espressivo

mp

STILL ANOTHER MOVEMENT, PRETTIER THAN EVER

Andante cantabile

melodia marcato

p cross hands

This piece is on sale at all up-to-date music counters. Stop in and ask to have it played. If for any reason you cannot obtain copy from your dealer, send 15c in stamps or silver and complete copy will be mailed immediately.

Address TED BROWNE MUSIC CO.

325 W. Madison St., CHICAGO, ILL.