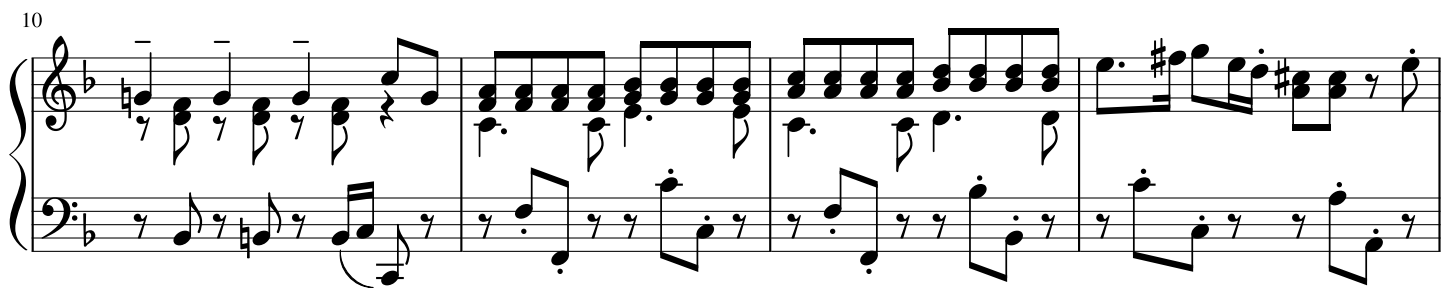
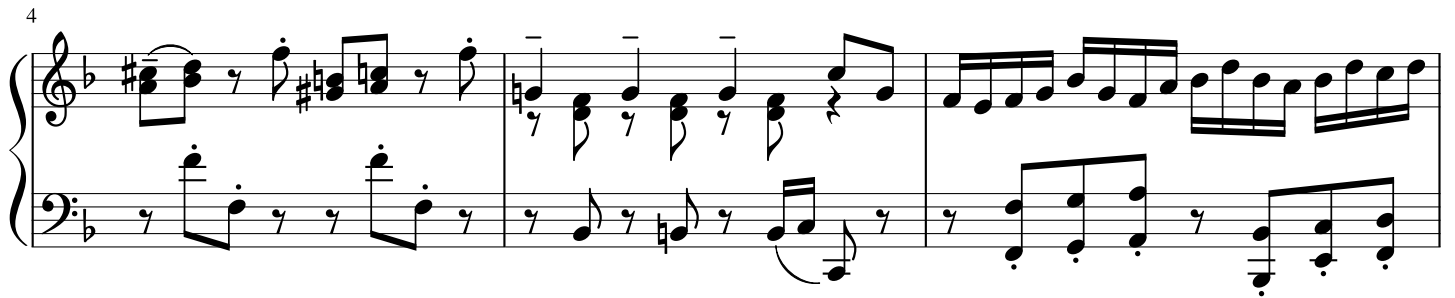


Sonatina

di Claudio Macchi

$\text{♩} = 93$



18

Measures 18-20 of a musical score in G major (one sharp). The right hand features a complex texture with many beamed eighth and sixteenth notes, including some triplets. The left hand provides a steady accompaniment with eighth and sixteenth notes. Measure 20 concludes with a rapid ascending scale in the right hand.

21

Measures 21-24 of the musical score. Measures 21 and 22 feature a melodic line in the right hand with slurs and ties, while the left hand continues its accompaniment. Measures 23 and 24 return to a more complex, rhythmic texture in the right hand, ending with a half-note chord.

25

Measures 25-28 of the musical score. Measures 25 and 26 show a change in the right hand's texture with more spaced-out notes. Measures 27 and 28 conclude the section with a final half-note chord in the right hand and a sustained bass note in the left hand.