

Stephen W. Beatty

872 Trio for Violin,  
Viola and Cello

## Instrumentation:

Violin

Viola

Cello

Play Time: 7' 55"

Vienna Symphonic Library instruments used  
for the performance in the Weiler Stone Room.

# 872 Trio for Violin, Viola and Cello

Stephen W. Beatty (1938)

**A** ♩ = 100

Violin

*f* *ff* *f*

Viola

**A** ♩ = 100

*f*

Violoncello

*f*

3

Vln.

Vla.

Vc.

5

Vln.

Vla.

Vc.

*ff* *f*

7

Vln.

Vla.

Vc.

*ff* *f*



9

Vln.

Vla.

Vc.

*ff* *f*



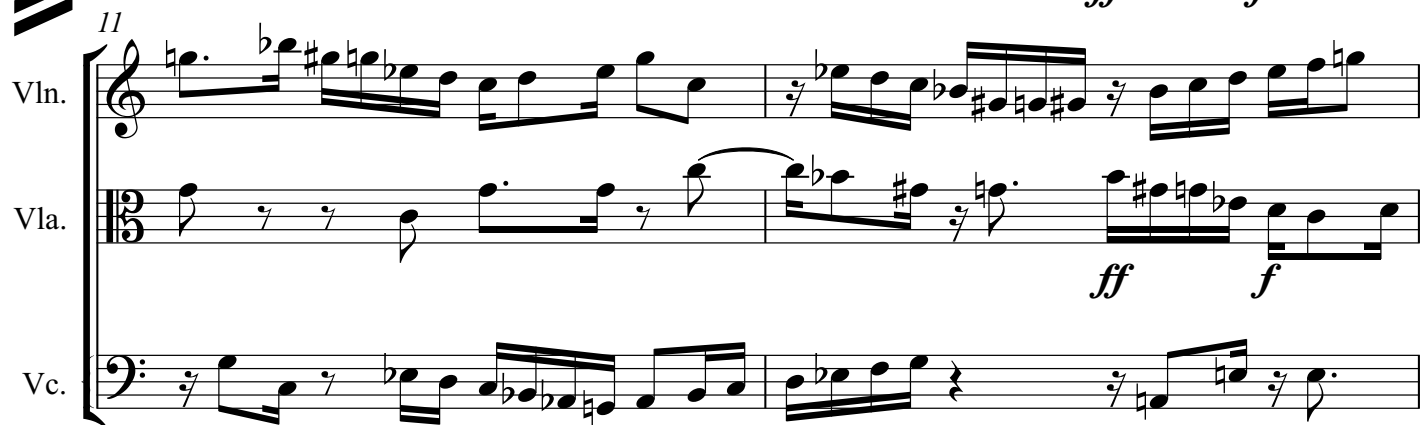
11

Vln.

Vla.

Vc.

*ff* *f*



13

Vln.

Vla.

Vc.



Violin (Vln.) part: Treble clef, 18 measures. Dynamics: *ff*, *mf*, *f*. Tempo:  $\text{♩} = 100$ . A boxed 'B' is above the first measure.

Viola (Vla.) part: Alto clef, 18 measures. Dynamics: *mf*, *f*. Tempo:  $\text{♩} = 100$ . A boxed 'B' is above the first measure.

Violoncello (Vc.) part: Bass clef, 18 measures. Dynamics: *mf*, *f*. Tempo:  $\text{♩} = 100$ . A boxed 'B' is above the first measure.

Violin (Vln.) part: Treble clef, key signature of one flat (B-flat). Measure 20 starts with a repeat sign. The melody consists of eighth and sixteenth notes, ending with a quarter rest in measure 22.

Viola (Vla.) part: Alto clef, key signature of one flat. Measure 20 starts with a repeat sign. The melody consists of eighth and sixteenth notes, ending with a quarter rest in measure 22.

Violoncello (Vc.) part: Bass clef, key signature of one flat. Measure 20 starts with a repeat sign. The melody consists of eighth and sixteenth notes, ending with a quarter rest in measure 22.

23

Vln. *mf* *f* *mf* *f*

Vla. *f* *ff* *f*

Vc. *mf* *p* *f* *mf*

26

Vln. *ff* *mf* *f* *ff* *mf* *f*

Vla. *ff* *f* *ff*

Vc. *f* *mf* *f* *mf*

29

Vln. *ff* *mf* *ff* *mp*

Vla. *f* *ff* *f* *ff* *f* *fff* *f*

Vc. *f* *mf* *f* *p*

8va-----

32

Vln. *f mp f ff f mf*

Vla. *ff f mf f mf f*

Vc. *mf f mf f ff*

(8)

35

Vln. *f ff f*

Vla. *ff mf ff f*

Vc. *mf f mf*

38

Vln. *fff ff f ff*

Vla. *fff ff f ff*

Vc. *mp mf f*

41

Vln. *ff* *f* *mf* *f*

Vla. *f* *ff*

Vc. *mf* *mp*

8va

44

Vln. (8) *mf*

Vla. *f* *ff* *f*

Vc. *mf* *mp* *f* *mf* *mp*

47

Vln. *f*

Vla. *ff* *f*

Vc. *f*

C ♩ = 95



49

Vln. *ff* *8va* *f*

Vla. *ff*

Vc.

51

Vln. (8)

Vla. *f* *mp*

Vc. *mp* *f*

53

Vln. *ff* *f*

Vla. *f*

Vc. *mf* *f*

55

Vln. *ff*

Vla. *mf* *f* *ff*

Vc. *ff* *f*

This musical score page contains measures 49 through 55. It is written for Violin (Vln.), Viola (Vla.), and Violoncello (Vc.). The key signature has one flat (B-flat). The time signature is 3/8. The score is divided into three systems, each starting with a double bar line and a measure number (49, 51, 53, 55). Dynamics include *ff* (fortissimo), *f* (forte), *mp* (mezzo-piano), and *mf* (mezzo-forte). The Violin part includes an 8va (octave up) marking in measure 49. The Viola and Violoncello parts have various articulations and slurs throughout the measures.

57

Vln.

Vla.

Vc.

*mf* *ff* *f* *mf* *ff* *f*

*mf* *f*

59

Vln.

Vla.

Vc.

*ff* *f* *ff* *f*

*ff* *f*

61

Vln.

Vla.

Vc.

*f* *mf* *ff* *mf*

*ff* *mf* *f*

63

Vln.

Vla.

Vc.

*ff* *f*

*f* *8va*

65

Vln. (8)  $mf$   $ff$

Vla.  $mf$   $ff$

Vc.  $mf$   $f$   $mf$

67

Vln.  $f$   $mf$   $f$

Vla.  $f$   $mf$   $f$

Vc.  $f$   $mf$   $f$

69

Vln.  $ff$

Vla.  $mf$

Vc.  $ff$

71

Vln.  $f$

Vla.  $mp$   $mf$   $f$   $ff$

Vc.  $f$   $ff$   $mf$   $f$

Detailed description: This is a page of a musical score for three string instruments: Violin (Vln.), Viola (Vla.), and Violoncello (Vc.). The page is numbered 11 in the top right corner. The score is divided into four systems, each starting with a measure number (65, 67, 69, 71) and a double bar line. The key signature has one flat (B-flat). The time signature is 3/8. The Violin part (Vln.) is in treble clef, the Viola part (Vla.) is in alto clef, and the Violoncello part (Vc.) is in bass clef. The score includes various musical notations such as eighth notes, sixteenth notes, and rests. Dynamic markings are present throughout, including  $mf$  (mezzo-forte),  $f$  (forte),  $ff$  (fortissimo), and  $mp$  (mezzo-piano). A specific instruction '(8)' is written above the first measure of the Violin part in the first system.

73

Vln.

Vla.

Vc.

*mf* *f* *mf* *ff* *mf* *ff* *f*

**D** ♩ = 100

75

Vln.

Vla.

Vc.

*f* *fff* *f* *ff* *f* *ff* *f*

8va

**D** ♩ = 100

*ff* *f*

78

Vln.

Vla.

Vc.

*f* *mf* *f* *ff* *mf* *f* *mf* *ff* *mf*

81

Vln.

Vla.

Vc.

*ff* *f* *ff*

83

Vln.

Vla.

Vc.

*f* *mf* *ff* *mf* *f*

86

Vln.

Vla.

Vc.

*ff*

89

Vln.

Vla.

Vc.

*f* *ff* *mf* *f* *ff*

Detailed description: This is a page of a musical score for three string instruments: Violin (Vln.), Viola (Vla.), and Violoncello (Vc.). The page is numbered 13 in the top right corner. The score is divided into four systems, each starting with a measure number (81, 83, 86, 89) and a double bar line. Each system contains three staves. The first staff is for Violin (Vln.), the second for Viola (Vla.), and the third for Violoncello (Vc.). The music is written in treble clef for Vln., alto clef for Vla., and bass clef for Vc. The key signature has one flat (B-flat). The dynamics are indicated by *ff* (fortissimo) and *f* (forte). The notation includes various note values, rests, and accidentals (sharps, flats, and naturals).

91

Vln.

Vla.

Vc.

93

Vln.

Vla.

Vc.

95

Vln.

Vla.

Vc.

97

Vln.

Vla.

Vc.

This musical score page contains measures 91 through 97 for Violin (Vln.), Viola (Vla.), and Violoncello (Vc.). The music is written in treble, alto, and bass staves respectively. The key signature has one sharp (F#) and the time signature is 3/8. Measure 91 features a Violin melody with dynamics *ff* and *f*, and a Viola accompaniment starting with *f*. Measure 92 continues the patterns. Measure 93 shows a Violin melody with *ff* and *f*, and a Viola accompaniment with *mf*, *f*, *ff*, and *mf*. Measure 94 continues. Measure 95 features a Violin melody with *f*, *mf*, and *f*, and a Viola accompaniment with *p* and *f*. Measure 96 continues. Measure 97 features a Violin melody with a long note and a Viola accompaniment with *mf* and *f*. The Violoncello part provides a continuous bass line throughout.

99

Vln. *mf*

Vla. *ff* *f*

Vc.

101

Vln. *f*

Vla. *ff* *f*

Vc.

103

Vln. *mf* *f*

Vla. *8va*

Vc. *ff* *f*

105

Vln. (8)

Vla. *mf* *f* *mf*

Vc. *mf* *f*

107

Vln. (8) *mf* *f*

Vla. *f*

Vc. *mf* *f* *mf*

110

Vln. *mf* *f* *ff*

Vla. *ff* *f*

Vc. *f* *mf* *f* *mf* *ff* *mf*

113

Vln. (8) *f*

Vla. *mf* *f* *ff* *f*

Vc. *f*



115

Vln.

Vla.

Vc.

*8va*

*mf* *f* *ff*

*mf* *mp*

*mp* *mf* *f*

117

Vln.

Vla.

Vc.

*f*

*mf* *f*

*mp* *f*

119

Vln.

Vla.

Vc.

*mf*

*f* *mp*

*mf*

122

Vln.

Vla.

Vc.

*f*

*mp* *mf* *f* *mp*



124

Vln.

Vla.

Vc.

*ff* *f*

*mf*



126

Vln.

Vla.

Vc.

*f*

*ff* *f*

*f* *mf*

129

Vln. *ff* *mf* *f*

Vla. *ff* *f* *8va*

Vc. *mp*

132

Vln. *mf*

Vla. *mf* *f*

Vc. *mf* *f* *mf* *f* *mf* *mp*

135

Vln. *f* *ff* *mf* *f*

Vla. *p* *f* *ff* *f* *mf*

Vc. *mf* *f* *mf* *mp* *mf*

138

Vln. *mf f mf f*

(8)

Vla. *f mf*

Vc. *mp mf f mf*

141

Vln. *(8) p f mf f*

Vla. *p f mf f*

Vc. *f mf*

144

Vln.

Vla.

Vc. *mp mf mp*

147

Vln.

Vla.

Vc.

*mf*

*mf*

*mp*

*mf ff*

150

Vln.

Vla.

Vc.

*mf f*

*mf ff*

*f*

*mf*

*ff*

*f*

153

Vln.

Vla.

Vc.

*f mf mp*

*f*

*mf*

*8va*

*ff*

*f*

*mp*

*mf*

*mp*

*mf*

156

Vln. *f* *mf* *f*

Vla. (8)

Vc. *mp* *mf*

158

Vln. *mf* *f* *mf* *8va*

Vla. (8) *mf*

Vc. *mp* *f* *mp* *mf*

161

Vln. *mp p* *f*

Vla. *f* *ff* *f*

Vc. *f* *mp* *mf*

164 *8va*

Vln. *mf* *f* *mf*

Vla. *mf*

Vc. *mp*

167

Vln. *f*

Vla. (8) *f*

Vc. *mf* *f* *mp* *mf*

**E** ♩ = 100

169 *8va*

Vln. (8) <sup>1</sup>

Vla. <sup>1</sup>

Vc. **E** ♩ = 100 *f*

171

Vln. *ff* *f* *8va*

Vla. *ff*

Vc.

172

Vln. *8va*

Vla. (8)

Vc. *mp*

173 (8)

Vln. *f* *mp* *f*

Vla. *f* *mp* *f*

Vc. *f* *mf* *f*

175

Vln. *ff* *f* *ff*

Vla. *mf*

Vc.

This musical score page contains measures 171 through 175 for Violin (Vln.), Viola (Vla.), and Violoncello (Vc.). The notation is in treble and bass staves. Measure 171 features a Violin part with a forte (ff) dynamic and an octave (8va) marking, and a Viola part with a fortissimo (ff) dynamic. Measure 172 shows the Violin part with an octave (8va) marking and the Viola part with an octave (8) marking. Measure 173 includes dynamics of forte (f), mezzo-piano (mp), and forte (f) for all three instruments. Measure 174 continues with dynamics of forte (f), mezzo-forte (mf), and forte (f). Measure 175 features a Violin part with dynamics of fortissimo (ff), forte (f), and fortissimo (ff), and a Viola part with mezzo-forte (mf) dynamic.



177 *8va*

Vln.

Vla.

Vc.

*f ff mf ff f*

*ff f mf*

179 (8)

Vln.

Vla.

Vc.

*mf ff f*

*f ff f*

181 *8va*

Vln.

Vla.

Vc.

*ff f ff*

*ff f mf*

183

Vln.

Vla.

Vc.

*ff f ff*

*ff mf f*

*mf f*

*8va*

185

Vln. *f*

Vla. (8) *mf*

Vc. *mf* *f*

187

Vln. *ff* *f* *mf* *f*

Vla. *ff* *f* *mf* *f*

Vc. *mf* *f*

189

Vln. *8va*

Vla. *8va*

Vc. *mf* *f*

191 (8)

Vln. *ff*

Vla. *mf*

Vc. *ff*

192 (8)

Vln. *f*

Vla. *mp* *mf* *f* *ff*

Vc. *f* *ff* *mf* *f*

194

Vln. *ff* *mf* *8va*

Vla. *mf* *f* *mf*

Vc. *mf* *ff* *f*

196 *8va*~

Vln. *f* *fff*

Vla. (8) *f* *ff*

Vc. *ff*

The image shows a musical score for three instruments: Violin (Vln.), Viola (Vla.), and Violoncello (Vc.). The score is for measures 196 to 200. The Violin part starts at measure 196 with a forte (f) dynamic and an 8va~ marking, transitioning to fortissimo (fff) later. The Viola part starts at measure 196 with a forte (f) dynamic and an (8) marking, transitioning to fortissimo (ff) later. The Violoncello part starts at measure 196 with a fortissimo (ff) dynamic. The score is for measures 196 to 200.

Violin

# 872 Trio for Violin, Viola and Cello

Stephen W. Beatty (1938)

**A**  $\text{♩} = 100$

1 *f* *ff* *f*

4

7

10

13 *8va*

16 **B**  $\text{♩} = 100$  *ff* *mf* *f*

20

23

*mf* *f* *mf* *f* *ff* *mf* *f*

27

*ff* *mf* *f*

30

*ff* *mf* *ff* *mp* *f* *mp* *f*

33

*ff* *f* *mf* *f*

37

*ff* *f*

40

*ff*

43

*f* *mf* *f* *mf*

47

*f* *ff* *f*

51

54

*ff* *f* *ff*

## Violin

3

57 *f*

61 *ff* *f* *ff*

64 *f*

67 *ff*

71 *f*

74 *ff* *mf* *f* *fff* *f* *ff*  $\text{♩} = 100$

78 *f* *mf* *f*

81

85

89

## Violin

92 *ff* *f* *ff*

95 *f* *mf* *f*

99 *mf*

102 *f* *mf* *f*

106 *mf* *f*

110 *mf* *f* *ff*

114 *f* *mf* *f* *ff*

117 *f*

120

123 *ff* *f*



## 5

5

148

*mf*

153 *f* *mf* *mp* *f* *mf*

156 *f* *mf* *f* *mf* *8va*

159 (8) *f* *mf* *mp* *p*

162 *f* *mf* *8va*

165 (8) *f* *mf*

168 *f* *8va* *ff* *f*

172 *8va*

174 *ff* *f* *ff*

177 *8va* *f*

181 *8va* *ff* *f* *ff*

Rehearsal mark E:  $\text{♩} = 100$

## Violin

7

185 *f*

188 *ff* *8va*

192 (8) *f*

194 *ff* *mf* *f* *fff* *8va*

Viola

# 872 Trio for Violin, Viola and Cello

Stephen W. Beatty (1938)

**A**  $\text{♩} = 100$

5

8

11

14

17 (8) **B**  $\text{♩} = 100$

20

24

28

*f* *ff* *f* *ff* *f* *ff* *f* *fff* *f*

V.S.

32



36



40



44 (8)



47



50



53



56



59



62



65 (8)<sup>-1</sup>

*mf ff f mf f*

68

*mf*

71

*mp mf f ff*

73

*mf f mf f ff* *8va*

76 (8)<sup>-1</sup> *♩* = 100

*fff ff f ff mf f*

80

*ff f ff*

83

*f mf ff mf f*

87

*ff f*

90

*ff mf f*

93

*mf f ff mf*

96



99



102



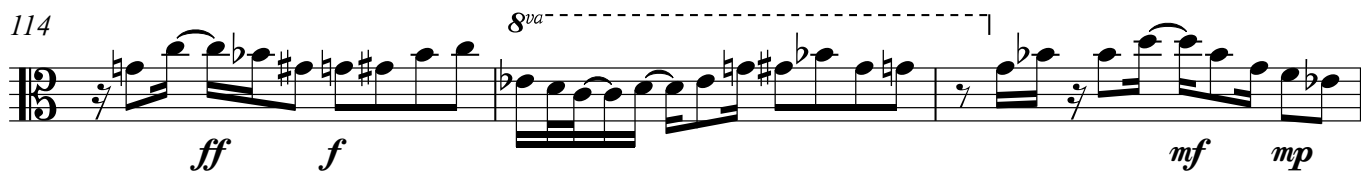
105 (8)



110



114



117



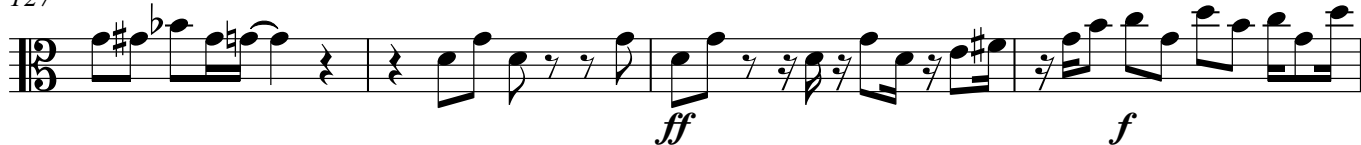
121

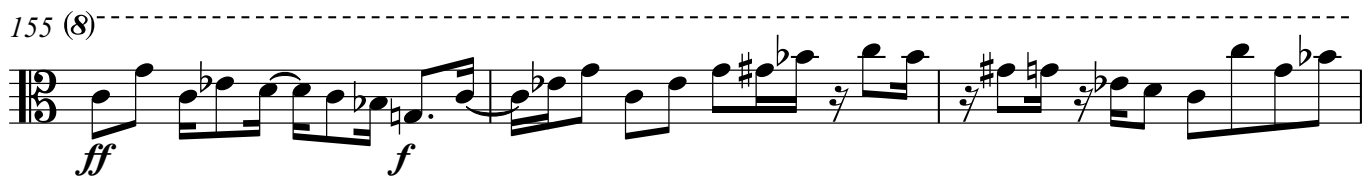
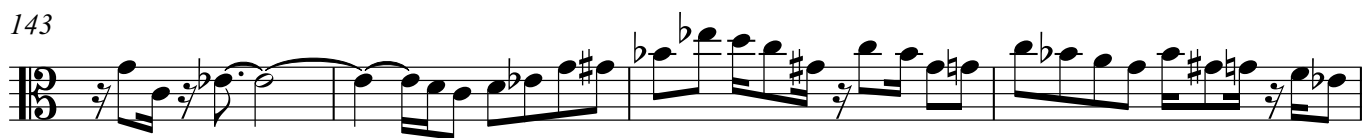


124



127







166 (8)-----

*f*

169 (8)-----| **E** ♩ = 100 8va-----

*ff*

172 (8)-----|

*f mp*

174

*f mf*

177

*f ff mf ff f mf ff f*

180

*ff f mf*

183 8va-----

*ff mf f*

186 (8)-----|

*mf ff f mf f*

189 8va-----

*mf*

192

*mp mf f ff mf f mf*

## Viola

7

195

8<sup>va</sup>

*f* *ff*

Violoncello

# 872 Trio for Violin, Viola and Cello

Stephen W. Beatty (1938)

**A**  $\text{♩} = 100$

Measures 1-28 of the Violoncello part. The score is in bass clef with a key signature of one flat (B-flat). It features various dynamics including *f*, *ff*, *mf*, *p*, and *f*. Section A ends at measure 16, and Section B begins at measure 17. The score concludes with a V.S. (Vivace) marking.

Measures 1-28 of the Violoncello part. The score is in bass clef with a key signature of one flat (B-flat). It features various dynamics including *f*, *ff*, *mf*, *p*, and *f*. Section A ends at measure 16, and Section B begins at measure 17. The score concludes with a V.S. (Vivace) marking.

## Violoncello

32 (8)-----|

36

40

44

48 **C** ♩ = 95

51

54

57

60

63

*mf* *f* *mf* *f* *ff* *mf*

*f* *mf* *mp* *mf*

*f* *mf* *mp*

*mf* *mp* *f* *mf* *mp* *f*

*mp* *f* *mf* *f*

*ff* *f*

*mf* *f* *ff* *mf* *f*

*mf* *f*

66



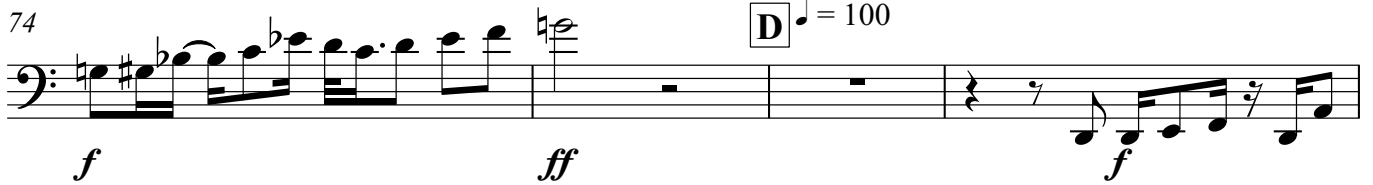
69



71



74



78



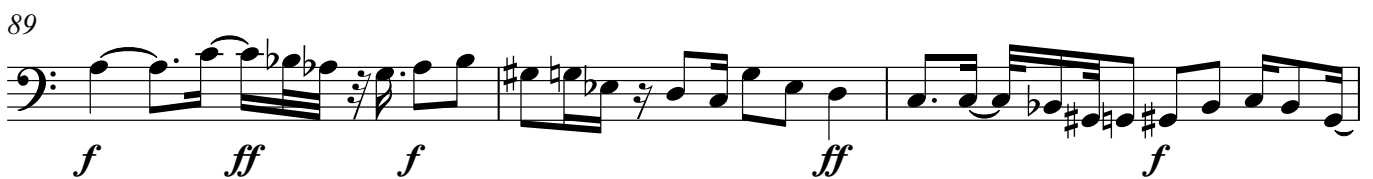
81



85



89



92



95



98



101



104



107



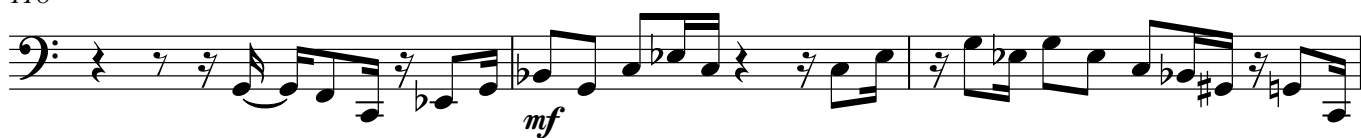
110



114



118



121



124



127



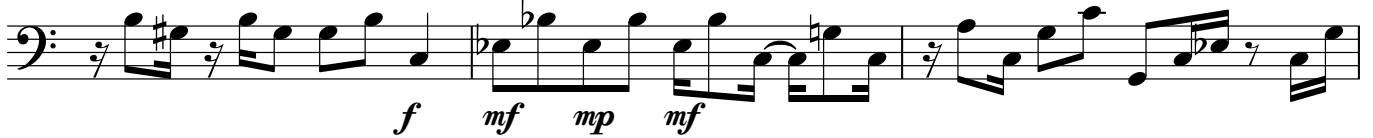
130



133



136



139



142



145



148



151



154



157



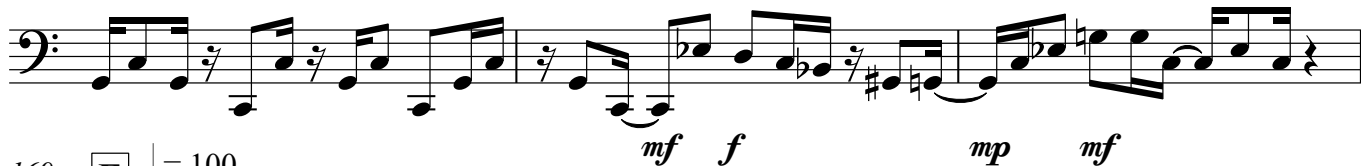
160



163



166

169 E ♩ = 100

171



173



176



179



182



185





## Violoncello

7

188



191



193



195

