

Cornett

1720 Duet for Cornett and Cello

Stephen W. Beatty (1938)

♩ = 90

5

9

14

18

21 (8)

24

28

32

f *pp* *mf* *f*

ff *f*

mf *f* *mp* *mf*

f *mp* *mf* *f*

mf *f* *mf* *f*

mf *f* *mf*

f *mp* *mf*

f *mf* *f*

mf

8va-----

36 *mp* *f* *mf* *f* *mp* *mf*

40 *f* *mf*

44 *ff* *f* *mf* *f*

48 *mf* *f* *mf* *f*

52 *mf* *f* *mf* *f*

55 *mf* *p* *mf* *f* *mf*

59 *f* *mp* *mf* *f* *8va*-----

63 (8)----- *mf*

66 *mp* *mf* *f* *mf*

69 *f* *mp* *f*

Cornett

3

72 *mf* *f* *8va*

75 *mf*

78 *f* *mf* *mp* *8va*

81 *mf* *f* *mf*

84 *f* *mp* *mf* *pp* *mf* *8va*

87 (8) *f* *mp*

91 *f* *mf* *f* *mf*

94 *mp*

97 *pp* *mp* *f* *mp* *f*

101 *mf* *f* *mf*

V.S.

105 *f mp mf p mf*

109 *f mf f mf*

113 *mp mf*

117 *8va mp f mf f mf*

120 *8va*

123 *p mf*

126 *8va mp p mf mp*

130 *mf f*

134 *mf*

137 *8va f mf mp f mf*

140

145

148

151

154

8va-

mp *mf* *f* *mf* *f* *mf* *mp* *mf* *f* *mf* *mp* *mf* *f* *mf* *mp* *mf* *f* *mf* *p* *ff* *pp* *mp*

Detailed description: This image shows five staves of musical notation for a Cornett part. The music is in 2/4 time and B-flat major. Staff 140-144: Starts with a treble clef and a key signature of one flat. It begins with a melodic line marked *mp*, followed by a measure with *mf* and *f* dynamics, then a measure with a fermata and a '2' above it. The staff continues with a melodic line marked *mf*. Staff 145-147: Continues the melodic line with various dynamics including *f*, *mp*, *mf*, *f*, and *mf*. Staff 148-150: Features a melodic line with a dotted note and a slur, marked *mp* and *mf*. A dashed line labeled '8va-' indicates an octave transposition. Staff 151-153: Continues the melodic line with dynamics *mp*, *mf*, and *mp*. Staff 154-157: Ends with a melodic line marked *mf*, *mp*, *mf*, *p*, *ff*, *pp*, and *mp*, concluding with a double bar line.

Violoncello

1720 Duet for Cornett and Cello

Stephen W. Beatty (1938)

♩ = 90



35



39



43



47



51



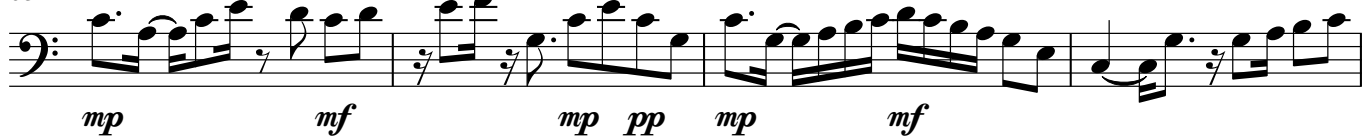
55



59



63



67



71



75



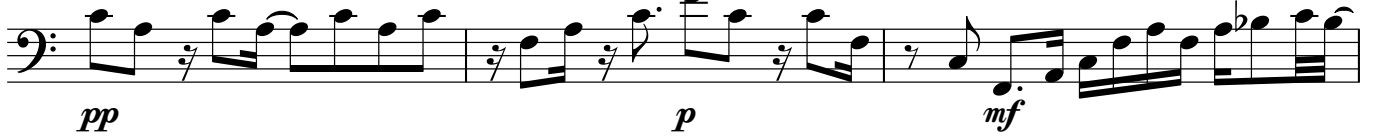
79



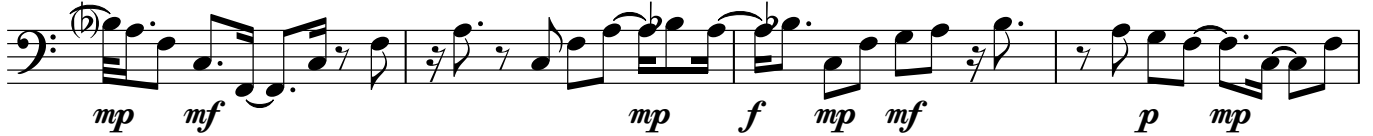
83



86



89



93



97



101



105



109





151



154

