

*H. Q. Beikman*

# The Miracle of Love

## A BALLAD

All performing and  
mechanical reproducing  
rights reserved

Piano The  
Composer's  
Compliments

### INTRODUCTION

*Moderato with expression*

Music by **Frank W. McKee**  
*Composer of Cécile, Millicent,  
Perdita, Riverside Bells, etc.*

mf

### VOICE *Very legato*

*rit.*      Horns      *a tempo*

*mf cresc.*

7.

*H. C. Baird*

# The Miracle of Love

Flute

A BALLAD

Frank W. McKee

## INTRODUCTION

*Moderato With expression*

*mf legato*

## VOICE

*cresc.*

*f* *ff rit.* *a tempo*

## CHORUS

*rit.* *p*

*f* *molto rit.*

Clarinets in A

A BALLAD

INTRODUCTION  
Moderato

Frak W. McKee

*mf very legato*

VOICE

*mf*

*rit.*

*a tempo*  
*f*

*broad*  
*a tempo*  
*ff rit.*  
*rit.*

CHORUS

*p*

*rit.*

*a tempo*  
*mf*

*cresc.*  
*ff rit.*  
*molto rit.*

when only Clar  
play under part

# The Miracle of Love

Cornets in A

A BALLAD

Song accompaniment  
or Cornet Solo

Frank W. McKee  
*Composer of Cécile, Millicent,  
Perdita, Riverside Bells, etc.*

## INTRODUCTION Moderato

*mf very legato*

## VOICE or Cornet Solo

*mf*  
Horns

*rit.*  
Horns

*mf a tempo*  
*mf cresc.*  
Cor. I

H. C. Beilstein  
Cornets in A

*Broad*

*f* *ff rit.* *a tempo* *rit.*  
Horns

CHORUS

*p*  
Horns

*cresc.* *rit.*

*mf a tempo*

*cresc.* *f* *ff* *molto rit.*

*H. C. Beibstein*

# The Miracle of Love

## A BALLAD

**Trombone Solo**  
or Song accompaniment

Frank W. McKee

### INTRODUCTION

Moderato

*mf very legato*

Musical notation for the Introduction, Trombone Solo part. It consists of a single staff in bass clef with a key signature of two sharps (F# and C#) and a common time signature. The tempo is marked 'Moderato'. The dynamics are marked 'mf very legato'. The melody is a series of eighth and quarter notes, mostly moving upwards, with some rests.

### VOICE

*mf*

Cello

Musical notation for the Voice part. It consists of a single staff in bass clef with a key signature of two sharps (F# and C#). The dynamics are marked 'mf'. The melody is a series of eighth and quarter notes, mostly moving upwards, with some rests.

*cresc.*

*rit.*

Musical notation for the Cello part. It consists of two staves in bass clef with a key signature of two sharps (F# and C#). The dynamics are marked 'cresc.' and 'rit.'. The melody is a series of eighth and quarter notes, mostly moving upwards, with some rests.

*a tempo*

*mf cresc.*

Musical notation for the Trombone Solo part. It consists of two staves in bass clef with a key signature of two sharps (F# and C#). The dynamics are marked 'a tempo' and 'mf cresc.'. The melody is a series of eighth and quarter notes, mostly moving upwards, with some rests.

# Trombone Solo

First system of the Trombone Solo. The music is in 6/8 time with a key signature of two sharps (F# and C#). The upper staff features a melodic line with slurs and accents, while the lower staff provides a rhythmic accompaniment. Performance markings include *f Broad*, *ff rit. a tempo*, and *rit.*. A *Bassoon* part is also indicated in the upper right.

**CHORUS**

Second system of the Trombone Solo, marked **CHORUS**. The music continues in 6/8 time. The upper staff has a melodic line with slurs, and the lower staff has a rhythmic accompaniment. The dynamic marking is *p*.

Third system of the Trombone Solo. The upper staff continues the melodic line with slurs. The lower staff has a rhythmic accompaniment. Performance markings include *cresc.* and *rit. Bassoon*.

Fourth system of the Trombone Solo. The upper staff continues the melodic line with slurs. The lower staff has a rhythmic accompaniment. The dynamic marking is *mf a tempo*.

Fifth system of the Trombone Solo. The upper staff continues the melodic line with slurs. The lower staff has a rhythmic accompaniment. Performance markings include *f*, *ff*, and *molto rit.*.

H. Q. Bebbins  
Musical Director

FRANK W. MCKEE,  
Musical Director

# The Miracle of Love

## A BALLAD

Drums (tacet)  
Triangle and Bells

Frank W. McKee

### INTRODUCTION

Moderato *With expression*  
Triangle

VOICE  
1 16



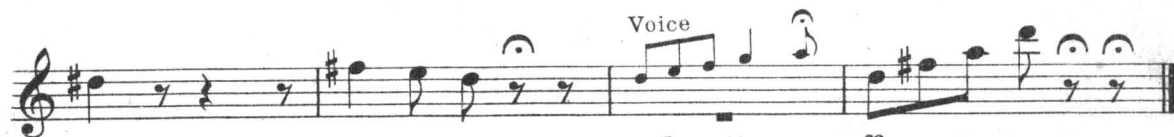
*mf*

### CHORUS

Bells



*rit.* *a tempo*



*molto rit.* *p*

Copyright, 1917, by G. Schirmer



All performing and  
mechanical reproducing  
rights reserved

# The Miracle of Love

## Violin I

## A BALLAD

Song accompaniment  
or Violin Solo

PAUL E. GOMEZ,  
Musical Director.  
Frank W. McKee

Composer of *Cécile, Millicent, Perdita, Riverside Bells, etc.*

INTRODUCTION  
Moderato  
divisi

VOICE

H. C. Beilstein

*Broad* *ff rit.* *a tempo* *rit.* Horns

CHORUS

Voice

*p* Violin obbligato

*cresc.* *rit.*

*f a tempo*

*ff* *molto rit.*

# The Miracle of Love

## A BALLAD

Violin II

*H. A. Beikstein*

Frank W. McKee

### INTRODUCTION

Moderato *With expression*

mf legato

### VOICE

mf very legato

rit.

a tempo

cresc.

broad

f

ff rit.

a tempo

rit.

### CHORUS

p

cresc.

rit.

a tempo

mf

cresc.

f

ff

molto rit.

*H. P. Hillman*

# The Miracle of Love

## A BALLAD

Viola

Frank W. McKee

### INTRODUCTION

Moderato *With expression*

*mf legato*

### VOICE

*mf very legato*

*cresc. rit.*

*a tempo*

*cresc.*

*broad*

*f*

Voice

*a tempo*

*ff rit. a tempo*

### CHORUS

*p*

*cresc. rit.*

*a tempo*

*mf*

*cresc. f ff molto rit.*

The Miracle of Love

*H. C. Robbins*

A BALLAD

Violoncello Solo  
or Song accompaniment

Frank W. McKee

INTRODUCTION

Moderato *With expression*

Bass

*mf legato*

VOICE

*mf very legato* *molto espress.*

*rit.*

*mf a tempo* *cresc.* *mf*

Violoncello Solo  
or Song accompaniment

H. G. Reibman

*broad* *ff rit.* *a tempo* *rit.*

Bass

CHORUS

*p*

*cresc.* *rit.*

*mf a tempo*

*cresc.* *ff* *molto rit.*

Bass

*H. G. Beilstein*

# The Miracle of Love

## A BALLAD

Bass

**INTRODUCTION**  
Moderato *With expression*

Frank W. McKee

*mf*

**VOICE**

*mf* *rit.*

*a tempo* *cresc.*

*a tempo* *ff* *rit.*

**CHORUS**

*p*

*cresc.* *mf a tempo*

*f* *ff molto rit.*