

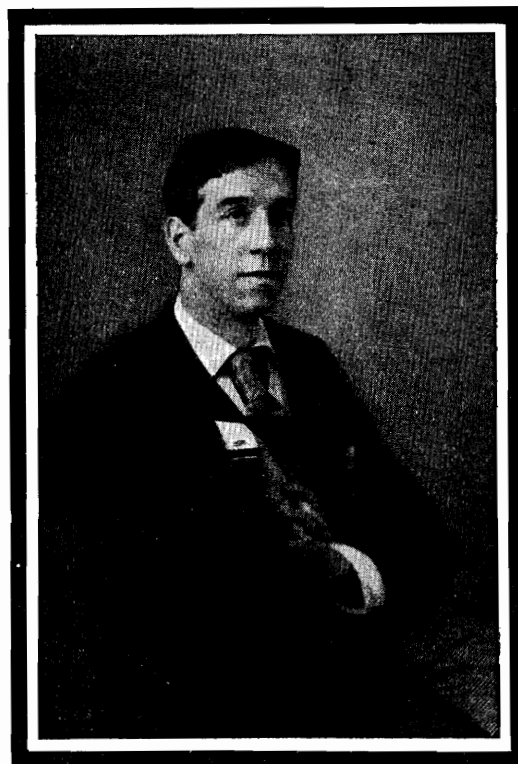
# ETHELBERT NEVIN

17

## Vocal Compositions

Songs with Piano

Album of collected Songs, (9) Two Keys, Complete	n. 1.25
1. Autumn Sadness ( <i>Herbstgefühl</i> ); 2. April Garden ( <i>La Chanson des Lavandières</i> ); 3. 'Twas April; 4. Raft Song; 5. Before the Daybreak; 6. Rosebud, The ( <i>Hab' ein Röslein Dir Gebrochen</i> ); 7. Vase, The ( <i>Le Vase Brisé</i> ); 8. Remember Well ( <i>Rappelle-Toi</i> ); 9. An Old Song ( <i>Une Vieille Chanson</i> ).	
Airly Beacon, Op. 20, No. 4, Two Keys	.50
April Garden ( <i>Chanson des Lavandières</i> ), Op. 5, No. 2, Two Keys	.50
At Twilight, Op. 12, No. 5, Two Keys	.50
Autumn Sadness ( <i>Herbstgefühl</i> ), Op. 5, No. 1, Two Keys	.50
Beat upon Mine, little Heart, Op. 12, No. 2, Two Keys	.50
Before the Daybreak, Op. 5, No. 5, Two Keys	.50
Book of Songs, A (10), Op. 20, Two Keys, Complete	n. 1.25
1. A Fair Good Morn; 2. Sleep, Little Tulip; 3. Ev'ry Night; 4. Airly Beacon; 5. When the Land was white with Moonlight; 6. A Song of Love; 7. Nocturne (Up to her chamber window); 8. Dites-moi (Tell me); 9. Orsola's Song ( <i>Chantez! la nuit sera brève</i> ); 10. In the Night ( <i>In der Nacht</i> ).	
Deep in a Rose's Glowing Heart, Op. 3, No. 1, Two Keys	.40
Ev'ry Night, Op. 20, No. 3, Two Keys	.30
Fair Good Morn, A, Op. 20, No. 1, Two Keys	.50
In a Bower, Op. 12, No. 3, Two Keys	.50
In the Night ( <i>In der Nacht</i> ), Op. 20, No. 10, Two Keys	.60
Life ( <i>La Vie</i> ), Mezzo-sop.	.35
Life Lesson (There, Little Girl, Don't Cry)	.50
Little Boy Blue, Op. 12, No. 4, Two Keys	.60
Maiden, How Sweet ( <i>Müdel, wie blüht's</i> ), Op. 22, No. 2	.50
Merry, Merry Lark, Two Keys	.40
Nocturne (Up to her Chamber Window), Op. 20, Two Keys	.50
Oh, That We Two Were Maying, Op. 2, No. 8, Three Keys	.60
Old Song, An ( <i>Une Vieille Chanson</i> ), Two Keys	.50
One Spring Morning, Op. 3, No. 2, Two Keys	.60
Orsola's Song, ( <i>Chantez! la nuit sera brève</i> ), Op. 20, No. 9, Two Keys	.50
Raft Song, Op. 5, No. 4, Two Keys	.50
Remember Well ( <i>Rappelle-Toi</i> ), Op. 17, No. 3, Two Keys	.75
Rosary, The, Three Keys	.60



## Vocal Compositions—Continued

Rosebud, The ( <i>Hab' ein Röslein</i> ), Op. 17, No. 1, Two Keys	.50
Sketch Book (Songs and Piano Pieces), Op. 2, Complete	n. 1.25
2. 'Twas in the lovely Month of May ( <i>Im wunderschönen Monat Mai</i> ); 4. Thou'rt like unto a flower ( <i>Du bist wie eine Blume</i> ); 6. O let thy tears ( <i>Lehn' Deine Wang'</i> ); 8. Oh, That We Two Were Maying; 10. Three Songs from R. L. Stevenson's "Child's Garden of Verses"; 11. In Winter I get up at Night, II., Of Speckled Eggs the Birdie Sings, III., Dark-brown is the River; 11. The Night has a Thousand Eyes (Mixed Voices).	
Sleep, Little Tulip, Op. 20, No. 2, Two Keys	.60
Song of Love, A, Op. 20, No. 6, Two Keys	.50
Summer Day, Op. 12, No. 1, Two Keys	.50
Tell Me ( <i>Dites-moi</i> ), Op. 20, No. 8, Two Keys	.50
Thine my Greeting ( <i>Ti Saluto</i> ), Op. 20, Two Keys	.50
Time Enough ( <i>Rechte Zeit</i> ), Op. 22, No. 1	.50
'Twas April, Op. 5, No. 3, Two Keys	.50
Vase, The ( <i>Le Vase brisé</i> ), Op. 17, No. 3, Two Keys	.50
When the Land was White with Moonlight, Op. 20, No. 5, Two Keys	.50

## Piano Compositions

Two Hands	
Op. 2, A Sketch Book (Songs and Piano Pieces), complete,	n. 1.25
1. Gavotte	
3. Love Song	
5. Berceuse	
7. Serenade	
9. Valse Rhapsodie	
Op. 2, No. 3, Love Song (from the Sketch Book)	.50
Op. 6, No. 2, Country Dance (arranged from the Duet)	.60
Op. 7, Four Pieces	
1. Valzer Gentle	.75
2. Slumber Song	.60
3. Intermezzo	.75
4. Song of the Brook	.75

Two Hands	
Op. 13, Water Scenes	complete, n. 1.25
1. Dragon Fly	.60
2. Ophelia	.60
3. Water Nymph	.75
4. Narcissus	.60
5. Barcarolle	.90
Op. 16, In Arcady	complete, n. 1.25
1. A Shepherd's Tale	.50
2. Shepherds All and Maidens Fair	.75
3. Lullaby	.60
4. Tournament	.75
Op. 18, Two Etudes	
1. Romance	.90
2. Scherzo	1.00

Slumber Song, Op. 7, No. 2 (arranged for the organ by E. H. Lemare) .50

## Vocal Compositions

Songs with Accompaniment of Various Instruments

Deep in a Rose's Glowing Heart, Op. 3, Violin and Cello, Two Keys	.50
Doris (A Pastorale), Violin and Cello, Two Keys	.90
Doris (A Pastorale), Full Orchestra, Two Keys, rent,	2.00
One Spring Morning, Violin and Cello, Two Keys	.75
Oh, That We Two Were Maying (A <sup>b</sup> ), String Quintet (2 Vo., Va., Cello and Bass)	1.25
Remember Well ( <i>Rappelle-Toi</i> ), Full Orchestra, rent,	2.00
Rosary, The, Large Orchestra	1.00
Rosary, The, Small Orchestra	.80
Rosary, The, Military Band	1.00

## Vocal Duets

Oh, That We Two Were Maying, Op. 2, No. 8, Three Keys	.60
String Quintet accompaniment (A <sup>b</sup> )	1.25

## Quartets & Choruses for Mixed Voices

A Song (from Love's Labor Lost)	.15
Evening Song	.12
May Day Dance (unison chorus, four-hand acc'pt)	.15
My Love	.10
The Night has a thousand Eyes (Violin Obligato)	.08
Wynken, Blynken and Nod (a Dutch Lullaby), Op. 9, Soprano solo; piano four-hand or orchestra acc'pt.	.40

## Quartets & Choruses for Female Voices

Doris (Violin and Cello Obligato) (3 parts)	.25
The Night has a Thousand Eyes, Op. 2, No. 13 (Violin Obligato) (4 parts)	.08
Wynken, Blynken and Nod, Sop. solo; piano four-hand or orchestra acc'pt (4 parts)	.40

## Quartets & Choruses for Male Voices

The Night has a Thousand Eyes (Violin Obligato)	.08
The Rhein and the Moselle	.15
Wynken, Blynken and Nod, Sop. solo; piano four-hand or orchestra acc'pt	.40

## Violin and Piano

Barcarolle	.55
Habanera, Op. 8, No. 2	.75
Melody, Op. 8, No. 1	.60
Narcissus, Op. 13, No. 4	.60

Narcissus is also published for Cello and Piano; Cornet and Piano; Mandolin and Guitar, in various combinations

## Orchestra

	Piano Part	Small Orchestra	Large Orchestra
Country Dance	.30	1.00	1.50
Narcissus	.25	.80	1.00
The Rosary (Cornet Solo)	.20	.80	1.00
Tournament	.30	1.00	1.50

## Band

Country Dance	1.50
Narcissus	1.00
The Rosary (Cornet Solo)	1.00
Tournament	1.50

G. Schirmer

THE BOSTON MUSIC CO. Boston, Mass.

New York: G. SCHIRMER

Foreign Agents: London, SCHOTT & CO.; Leipzig, FR. HOFMEISTER  
Paris, MAX ESCHIG; Melbourne, ALLAN & CO.

High Voice

Medium Voice

Low Voice



# Ti Saluto!

(Eric Mackay.)

English version by  
D. Th. Baker.

Thine my greeting.

ETHELBERT NEVIN.

Animato.

**Voice.**

Ti sa-lu - to, Mar - ghe - ri - ta,  
Thine my greeting, Mar - ga - ri - ta,

**Piano.**

*mf* *grazioso.* *commodo.*

*Il accompagnamento sempre leggiermente.*

Fior di - vi - ta! ti sa - lu - to! Sei la spé - me del mat - ti - no,  
Life-flow'r sweet, a joy - ful greet - ing! Thou, of morn the bright - est pleas - ure,

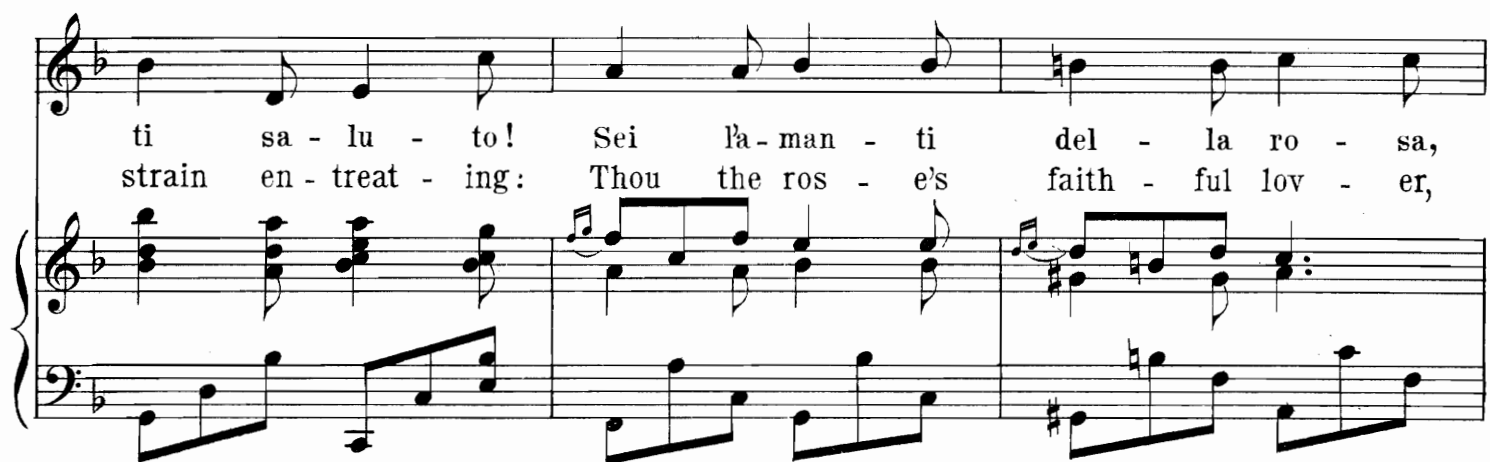
Sei la gio - ja del giar - di - no, Ti sa -  
Thou the gar - den's sweet - est treas - ure: Thine my



lu - to, Mar - ghe - ri - - - ta.  
greet - ing, Mar - ga - ri - - - ta.



Ti sa - lu - to, Ro - si - gno - lo, Nel tuo duo - lo  
Night - in - gale, to, thee my greet - ing, To thy mourn - ful



ti sa - lu - to! Sei l'a - man - ti del - la ro - sa,  
strain en - treat - ing: Thou the ros - e's faith - ful lov - er,



Che mo - ren - do si fa spo - - - sa: Ti sa -  
O'er her dy - ing charms dost hov - - - er: Night - in -

lu - to, Ro - si - gno - lo.  
gale, to thee my greet - ing.

*più ten.*

Ti sa - lu - to, Sol di Mag - gio, Col tuo rag - gio,  
Thine my greet - ing, Bright May - morn - ing, At the dawn - ing

*cresc.*

ti sa - lu - to! Sei l'A - pol - lo del pas - sa - to,  
thine my greet - ing! God - dess, thou of mem - 'ries dear - est,

*f* Sei l'a - mo - re in co - ro - na - to. *dim.* Ti sa - lu - to,  
In love's crown of gems the clear - est. Thine my greet - ing,  
*f compassione.* *dim. grazioso.*

*vibrato.*

B. M. Co 310

don - na mi - a, Cos - ta e pi - a; Ti sa - lu - to!  
 la - dy fair - est, Pur - est, rar - est; Thine my greet - ing!

Sei la di - va dei de - si - ri, Sei la san - ta  
 Thou, the boon my heart de - sir - eth, Saint to whom my

dei sos - pi - ri; Ti - sa - lu - to, don - na  
 soul as - pir - eth; Thine my greet - ing, la - dy

mi - a.  
 fair - est.

*ff rapido del fine.*

*Red.* \* *Red.* \*



# New Songs and Ballads by Modern Composers

FROM THE CATALOGUE OF

THE BOSTON MUSIC COMPANY

G. Schirmer

26 AND 28 WEST STREET, BOSTON, MASS.

Note.—Any of the compositions listed will be sent for examination.

\* Orchestra parts may be had of the publishers.

<b>LAUTZ, HENRY J.</b> EVENING. (G. and E.) Med. Gb . . . . .40	<b>OSGOOD, GEORGE L.</b> APRIL, LAUGH THY GIRLISH LAUGHTER. High G . . . . .50 THE NIGHT HAS A THOUSAND EYES. High E; Med. C . . . . .50	<b>SLATER, DAVID DICK</b> BELOVED, SLEEP. High Ab; Med. G; Med. F; Low Eb . . . . .60 I WONDER IF EVER THE ROSE. High E; Med. D; Low C . . . . .50 MAY DAY MORN. High F; Med. Eb; Med. D; Low C . . . . .60
<b>LEIGH, PERCIVAL</b> WHEN I WAS ONE-AND-TWENTY. (From "The Shropshire Lad") High F; Med. D; Low C . . . . .50	<b>RAE, KENNETH</b> LIFE'S EPITOME. High Eb; Med. Db; Med. C; Low Bb . . . . .60 LOVE'S MADRIGAL. High Eb; Med. D; Low C . . . . .75	<b>SMITH, WILSON G.</b> O WONDROUS DREAM. High F; Low Eb . . .50
<b>LLOYD, EDWARD T.</b> A BIRTHDAY WISH. High Bb; Med. Ab; Med. G; Low F . . . . .60 SWEET ROSES. (G. and E.) High C; Med. Bb; Med. Ab; Low G . . . . .60	<b>RICH, CARYL B.</b> LULLABY LANE. (Children) Med. Eb . . .50 MY LAMMIE. (Children) Med. Eb . . .50 THE SEAMSTRESS. (Children) Med. D . .50 SPORT AND REST. (Children) Med. D . .50	<b>SPARROW, FRED W.</b> WHEN VIOLETS THEIR FRAGRANCE SPILL. (Organ and violin or 'cello <i>ad lib.</i> ) High F; Med. Eb; Med. D; Low C . . . . .60
<b>LUNT, G. W.</b> KING BABY. (Children) Med. Ab . . . . .50 THE SOLAR MONDAY. (Children) Med. E . .50	<b>RIKER, FRANKLIN</b> By PROXY. High F . . . . .40 A FATHER'S LULLABY. Med. Ab . . . . .50 JUST ACROSS THE WAY. Med. F . . . . .40 LETTIE MALONE. Med. Ab . . . . .50 THE LOST BOY. Med. F . . . . .60 MY CAPTIVE. Low Ab . . . . .40 THE NEW LOVE. Med. F . . . . .40 RELEASED. High G . . . . .50 'VIRA. Med. C . . . . .50	<b>STEBBINS, G. WARING</b> By-LOW SONG. Med. F . . . . .50 THE FOUR SEASONS. ('Cello obligato) High C; Med. Bb; Low G . . . . .75 THE NOISETTE. High F; Low D . . . . .50
<b>MABERY, MARGARET ELLIS</b> GO, LOVELY ROSE. High Gb . . . . .30 SHADOWS. Med. F . . . . .30 SONG OF THE NIGHTINGALE. High Ab; Med. G . . . . .40	<b>ROGERS, JAMES H.</b> THE CAPTAIN. High D; Low C . . . . .50 "IF NO ONE EVER MARRIES ME." Med. F . .50 *LOVE HAS WINGS. High A; Low G . . .60 A SUMMER WOOING. High F; Med. D . . .50	<b>STEWART, H. J.</b> *THE ANGELUS. Med. Bb . . . . .60 *AWAKE, DEAR HEART. High F; Med. D . .60 *A BOAT SONG. High Eb; Med. Db . . .50 *A CALIFORNIA NIGHT SONG. ('Cello obligato) High F min.; Med. D min. . . . .75 *CONTRASTS. High D min.; Med. B min. . .50 *FOR LOVE OF THEE. High Db; Med. Bb . .50 *OH! LIKE A GARDEN IS MY HEART. High Eb; Low C . . . . .50 *OUT IN THE OPEN MEADOW. High Gb; Med. Eb . . . . .50 *SECRETS. High G; Low Eb . . . . .50 *THIS DAY IS BORN A SAVIOUR. (Christmas) High D min.; Med. B min. . . . .60
<b>MAQUARRE, ANDRE</b> BILLET DOUX. (F. and E.) Med Eb . . .60 MOISSONS. (F. and E.) Med. Db . . .60	<b>ROGERS, WINTHROP L.</b> THE BANKS OF CREE. (Scotch) Med. G . .50 THE LUTE PLAYER'S HOUSE. Med. B . . .50 NEAR IN THE FOREST. Med. Gb . . .50 OUT OVER THE FORTH. (Scotch) High Bb .40 THE SUMMER SEA. Med. G . . . . .50 TEN SONGS BY KATE GREENAWAY. Med. n. 1.00 THE TIDE RIVER. Med. G min. . . . .60 TWO BIRDS FLEW INTO THE SUNSET GLOW. Med. D . . . . .50 THE WOODLARK. (Scotch) High C . . .50	<b>STIMSON, F. W.</b> *THE VOICE OF SPRING. (Waltz song) High Eb . . . . .75
<b>MANNEY, CHARLES FONTEYN</b> AUTUMN SONG. (F. and E.) Med. G min. .50 THE BLUE HILLS FAR AWAY. High E; Med. Db . . . . .50 CALM ON THE LISTENING EAR OF NIGHT. (Christmas) High Eb; Med. Db; Low B . .50 DAISIES. High C; Low A . . . . .50 EMBRYO. Med. F . . . . .50 EVENING SONG. (G. and E.) High D min.; Low B min. . . . .60 FIDELITY. (F. and E.) High D; Low B . .50 FOR SOMEBODY. High F; Med. Db . . .50 THE HEAVENLY PROMISE. (Sacred) High F; Low Eb . . . . .50 MY JEAN. High F; Low D . . . . .50	<b>ROSE, FABIAN</b> CAN YOU FORGIVE? High F; Low C . . .60 *LOVE WILL TELL THE REST. High D; Med. C; Med. Bb; Low Ab . . . . .60 *SWEET EYES OF BLUE. High Bb; Med. Ab; Med. G; Low F . . . . .60	<b>STRUBE, GUSTAV</b> A SILENT GARDEN. (E. and G.) High Ab .50 SWEETHEART, FOR YOU. (E. and G.) High F . . . . .50
<b>MASCHERONI, ANGELO</b> THE LAND OF YESTERDAY. (I. and E.) High D; Med. C; Low A . . . . .60 THINE FOR LIFE. High F; Med. Eb; Med. D; Low C . . . . .60	<b>RUTLAND, JOHN</b> GOD IS OUR REFUGE. (Sacred duet) Vio- lin obligato. Two Basses Bb; Two Bari- tones C . . . . .75	<b>SWIFT, GERTRUDE H.</b> LOVE. High F . . . . .30
<b>MAWSON-MARKS, C.</b> *SLEEP ON. (Serenade) High G; Med. F; Low Eb . . . . .60	<b>RYDER, ARTHUR H.</b> THE DAWN IS WHERE THOU ART. High F; Med. D . . . . .50 DEAR, IF YOU CEASE TO LOVE ME. Med. G .50 FIVE LYRICS. (Louise Heald) Complete n. 1.25 HUGH OF THE HILL. Med. E min. . . . .60 LITTLE BOATS. (Lullaby) Med. Ab; Low F . . . . .50 LOVE IS COME. High Db . . . . .50 THE PLAIDIE. (Scotch) Med. G; Low E . .50 REMINISCENCE. High Gb . . . . .60 ROBIN HOOD'S GOODNIGHT. Ten. Eb; Bar. Db . . . . .50 THE ROBIN LAUGHED IN THE ORANGE-TREE. High Bb; Med. G . . . . .50 A VOICE ON THE WINDS. High Gb . . .60 WHO BUT YOUR LOVER. High E . . . . .50	<b>TAYLOR, ARTHUR MELVIN</b> AH! LET ME DREAM. High Ab; Med. F; Low D . . . . .50 THE DAISY. High F; Med. D . . . . .40 DOST THOU LOVE ME? High Ab; Med. F . .40 A DRAP O' DEW. High F; Med. D . . . . .50 IF MY LITTLE GIRL WERE A TINY STAR. High G; Low E . . . . .50 IN SPRINGTIME. High Eb . . . . .40 IRISH LOVE SONG. High C min.; Med. A min. . . . .50 A MADRIGAL. High F; Med. D . . . . .40 THE QUESTION. High A; Med. F . . . . .40 A ROSE SONG. High Eb; Med. C . . . . .40 SWEET MA HONEY. High D min.; Med. B min. . . . .50 THE VIOLET AND THE SUNFLOWER. High Ab; Med. F . . . . .40
<b>MENDELSSOHN, F.</b> I WAITED FOR THE LORD. High Eb; Low C . . . . .60 O COME, EVERY ONE THAT THIRSTETH. High Bb; Low G . . . . .60	<b>TELMA, MAURICE</b> ADORATION. High C; Med. Bb; Med. A; Low G . . . . .60 REMEMBRANCE. (Violin obligato) High D; Med. Bb; Low Ab . . . . .75	
<b>NEEDHAM, ELIZABETH E.</b> THE FISH ARE IN THE BAY. Bar. Eb; Bass D and C . . . . .75		
<b>NICHOLS, ROBERT</b> TO THEE, O GOD. (Sacred) Low Db . . .50		
<b>NORRIS, HOMER</b> O PERFECT LOVE. (A wedding song) Med. Ab . . . . .60		
<b>NEVIN, ETHELBERT</b> AT TWILIGHT. High G; Low F . . . . .50 A BOOK OF SONGS. High and low n. 1.25 LITTLE BOY BLUE. High Bb; Low Ab . .60 TIME ENOUGH. (E. and G.) Med. Ab . . .50 'T WAS APRIL. High G; Low F . . . . .50		

THEMATIC HANDBOOKS containing 40 English ballads and 22 sacred songs, providing a convenient means of choosing the most attractive compositions in these classes, will be sent to any address without expense.