

29 9^o 3

op 99 n^o 1

~~Prélude en mi b majeur~~

~~pour 9^e orgue~~

~~L. Saint-Louis~~

Prélude

&

Fugue

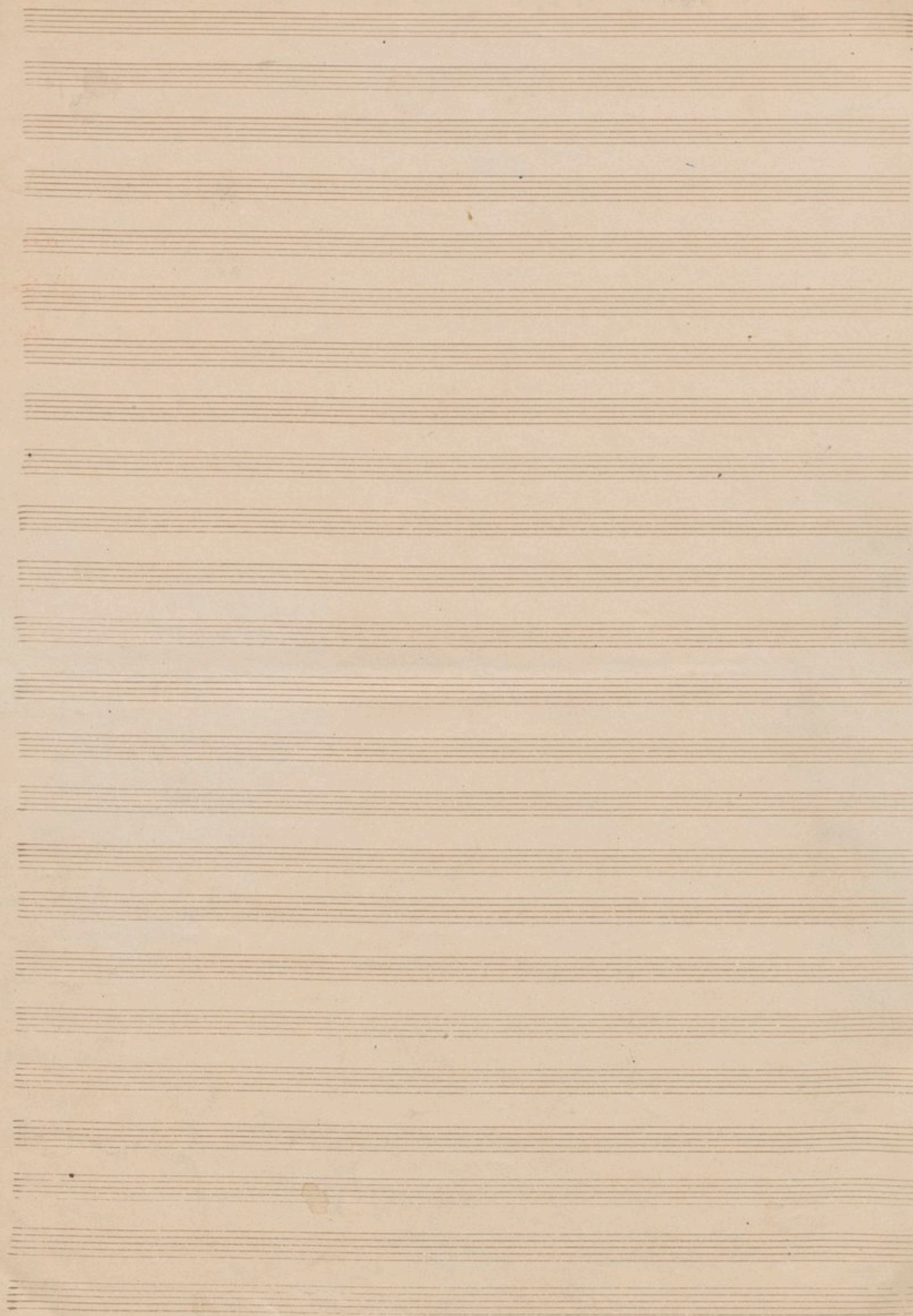


pour Orgue



Ms. 651 (1)

D.F. 4828



Prelude

1121

L. Saint-Saëns
Op. 29

Allegro moderato



clavier {

Pédale {

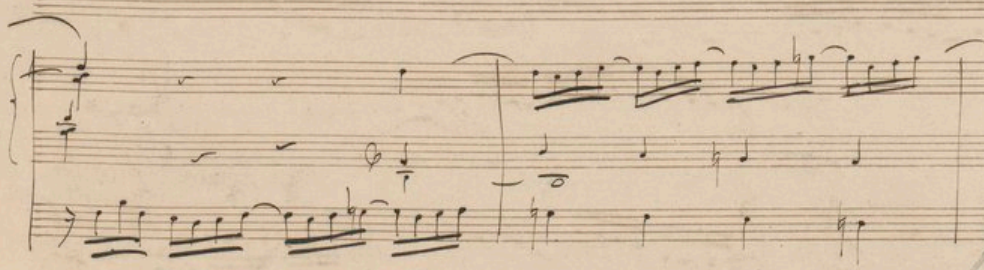
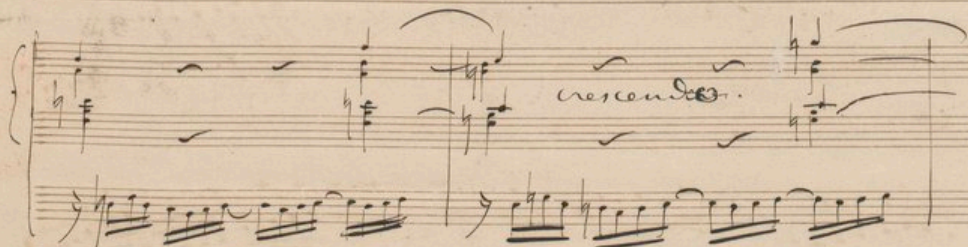
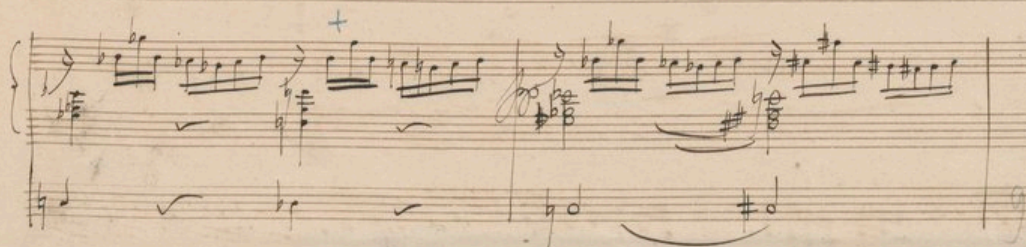
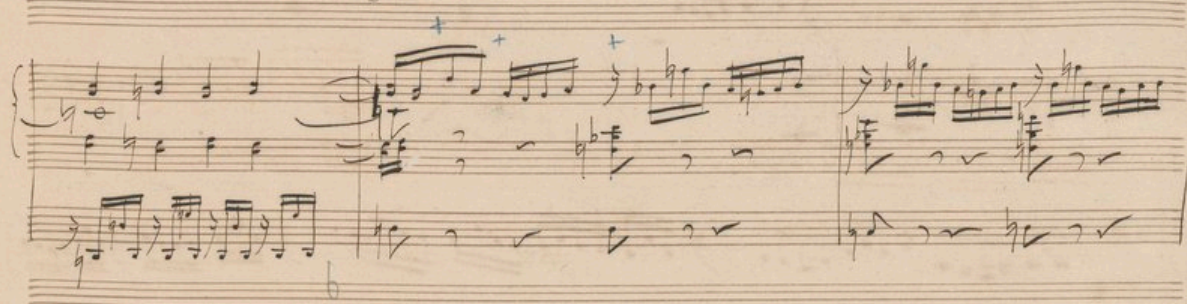
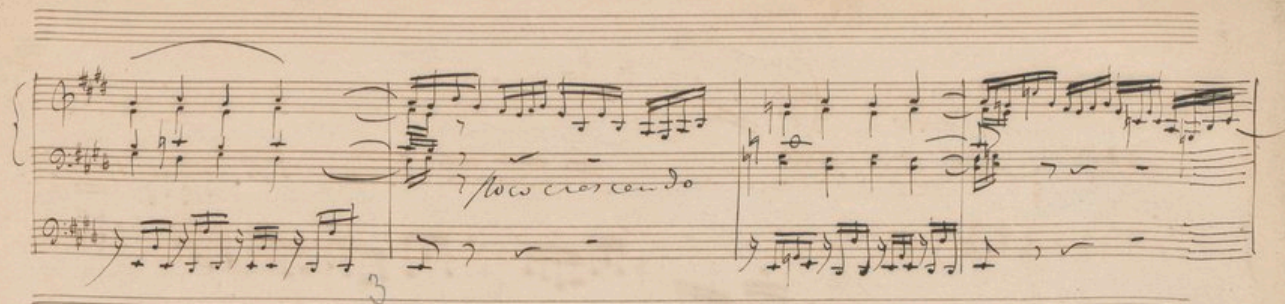
A B

C D F

F G H

I J K

L



Handwritten musical score system 1, measures 12-15. The system consists of three staves. The top staff has a treble clef and a key signature of two sharps (F# and C#). The middle and bottom staves have a bass clef. The music features various rhythmic patterns, including eighth and sixteenth notes, and rests. A measure number '15' is written at the end of the system.

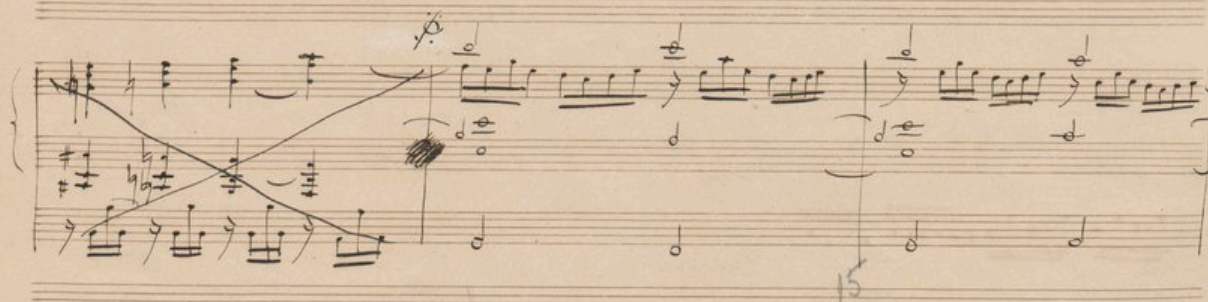
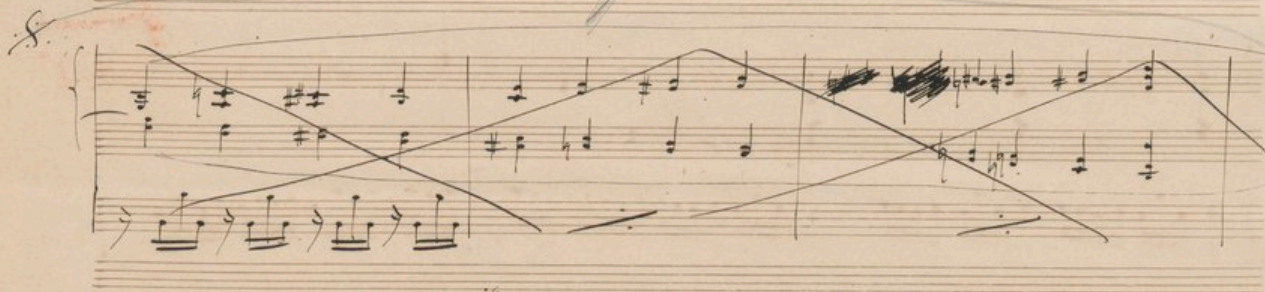
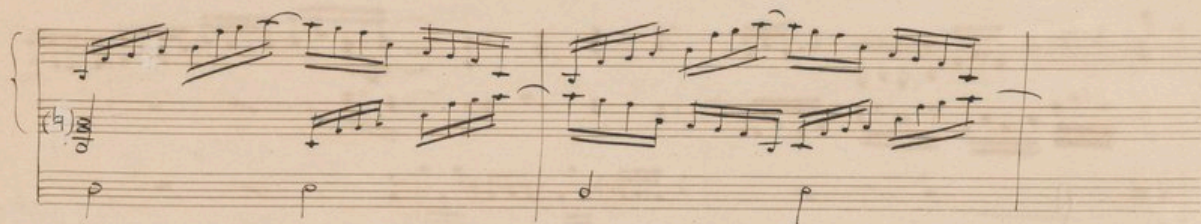
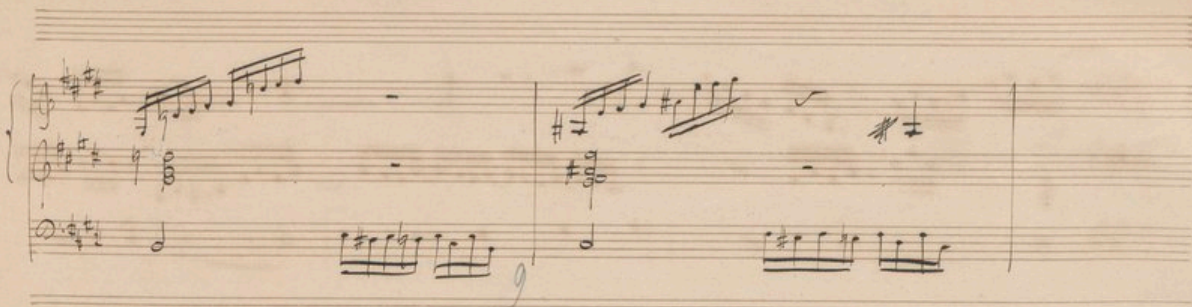
Handwritten musical score system 2, measures 16-18. The system consists of three staves. The top staff has a treble clef and a key signature of two sharps. The middle and bottom staves have a bass clef. The music continues with complex rhythmic patterns. A measure number '18' is written at the end of the system.

Handwritten musical score system 3, measures 19-21. The system consists of three staves. The top staff has a treble clef and a key signature of two sharps. The middle and bottom staves have a bass clef. The music continues with complex rhythmic patterns. A measure number '21' is written at the end of the system. The text "L'empie crescendo" is written above the top staff.

Handwritten musical score system 4, measures 22-24. The system consists of three staves. The top staff has a treble clef and a key signature of two sharps. The middle and bottom staves have a bass clef. The music continues with complex rhythmic patterns. A red circular stamp is visible on the right side of the system.



Handwritten musical score system 5, measures 25-28. The system consists of three staves. The top staff has a treble clef and a key signature of two sharps. The middle and bottom staves have a bass clef. The music continues with complex rhythmic patterns. A measure number '28' is written at the end of the system.



Handwritten musical notation on a single staff, featuring a treble clef, a key signature of one sharp (F#), and a 4/4 time signature. The notation includes a series of eighth and sixteenth notes, followed by a rest and then a series of chords. A large, stylized 'S' or 'Z' mark is written above the first measure. The page number '18' is written in the right margin.

Handwritten musical notation on a single staff, featuring a treble clef, a key signature of one sharp (F#), and a 4/4 time signature. The notation includes a series of eighth and sixteenth notes, followed by a rest and then a series of chords. A large, stylized 'S' or 'Z' mark is written above the first measure. The page number '18' is written in the right margin.

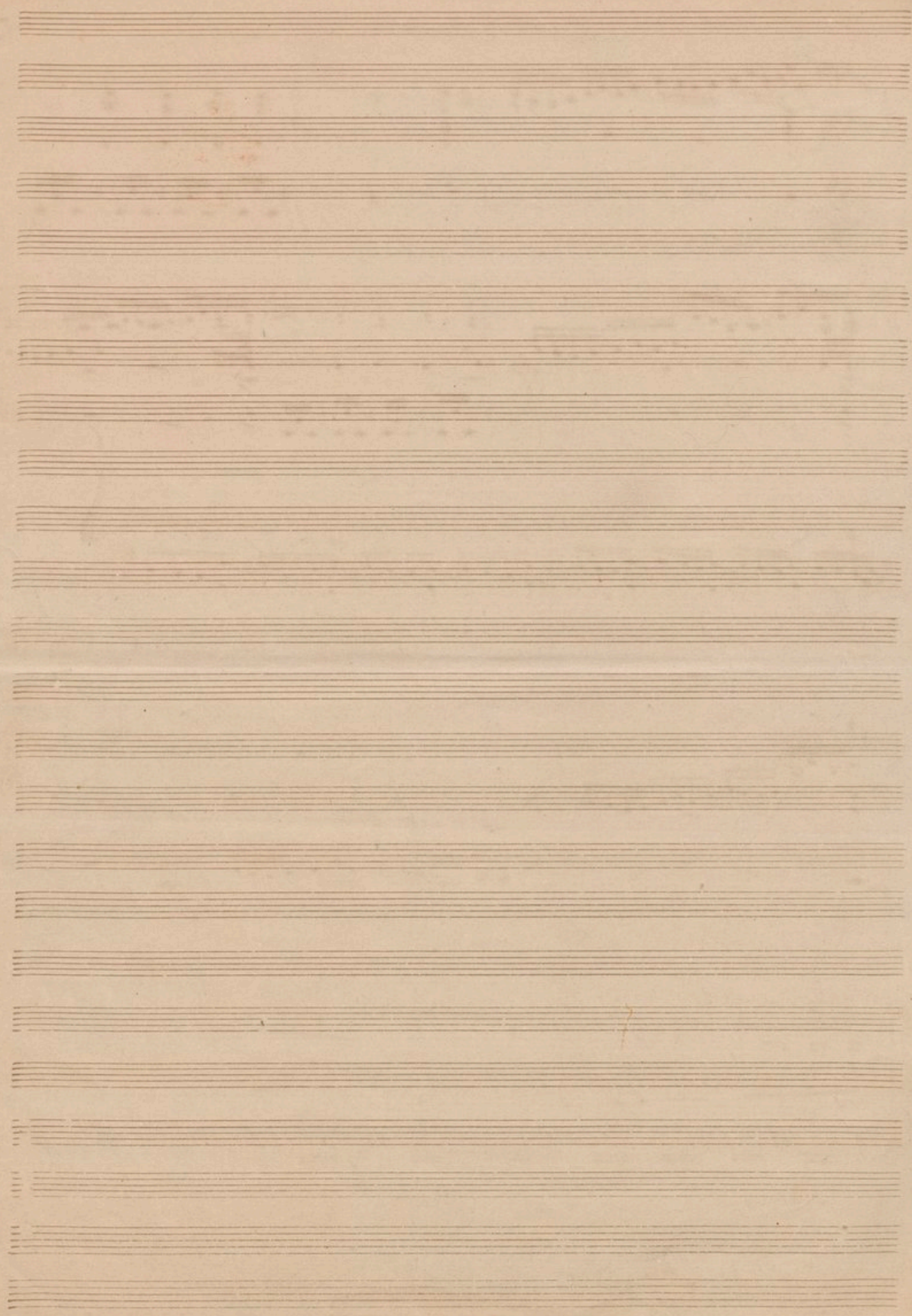
Handwritten musical notation on a single staff, featuring a treble clef, a key signature of one sharp (F#), and a 4/4 time signature. The notation includes a series of eighth and sixteenth notes, followed by a rest and then a series of chords. A large, stylized 'S' or 'Z' mark is written above the first measure. The page number '18' is written in the right margin.

Handwritten musical notation on a single staff, featuring a treble clef, a key signature of one sharp (F#), and a 4/4 time signature. The notation includes a series of eighth and sixteenth notes, followed by a rest and then a series of chords. A large, stylized 'S' or 'Z' mark is written above the first measure. The page number '18' is written in the right margin.



26
4-5

Handwritten musical notation on a single staff, featuring a treble clef, a key signature of one sharp (F#), and a 4/4 time signature. The notation includes a series of eighth and sixteenth notes, followed by a rest and then a series of chords. A large, stylized 'S' or 'Z' mark is written above the first measure. The page number '18' is written in the right margin.



op. 99 n°1

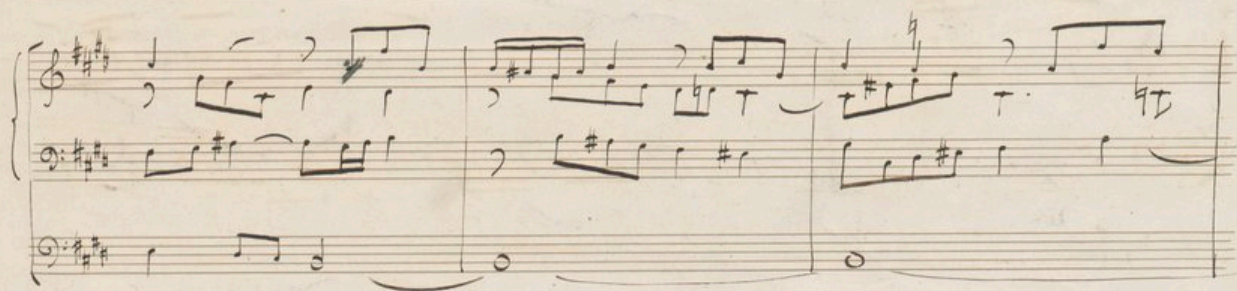
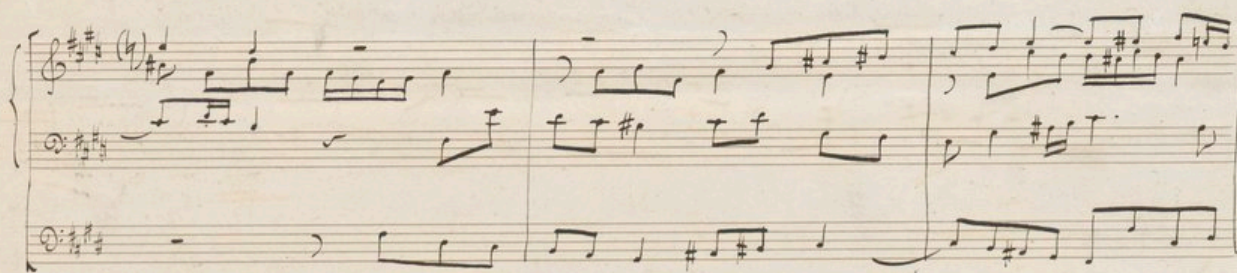
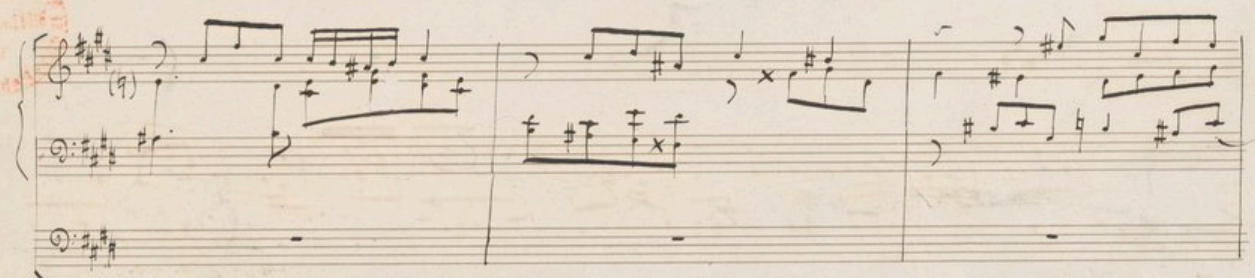
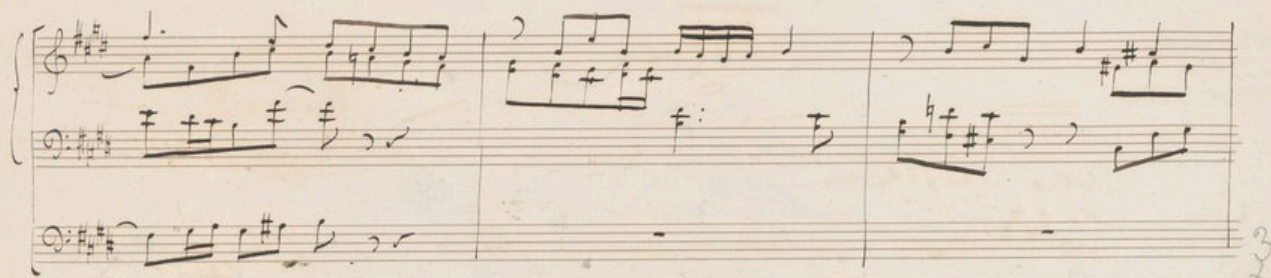
Fugue.



Dolce - legato - moderato.

Clavier

Pédale



Handwritten musical score system 1. It consists of three staves. The top staff is in treble clef with a key signature of three sharps (F#, C#, G#). The middle and bottom staves are in bass clef with the same key signature. The notation includes various note values, rests, and dynamic markings. Above the first staff, there is a handwritten annotation "2^{me} clar." with a line pointing to a specific measure. Below the first staff, there is a handwritten "9" and a circled "D".



Handwritten musical score system 2. It consists of three staves. The top staff is in treble clef with a key signature of three sharps. The middle and bottom staves are in bass clef with the same key signature. The notation includes various note values, rests, and dynamic markings. Above the first staff, there is a handwritten annotation "1^{re} clar." with a line pointing to a specific measure.

Handwritten musical score system 3. It consists of three staves. The top staff is in treble clef with a key signature of three sharps. The middle and bottom staves are in bass clef with the same key signature. The notation includes various note values, rests, and dynamic markings. Above the first staff, there is a handwritten annotation "12/4" with a line pointing to a specific measure.

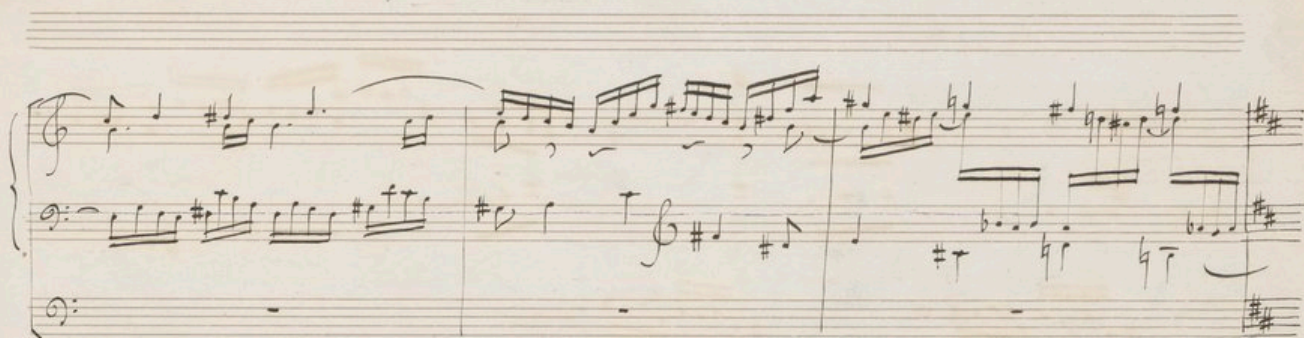
Handwritten musical score system 4. It consists of three staves. The top staff is in treble clef with a key signature of three sharps. The middle and bottom staves are in bass clef with the same key signature. The notation includes various note values, rests, and dynamic markings.

Handwritten musical score for measures 6-8. The system consists of three staves. The top staff is in treble clef with a key signature of two sharps (F# and C#). The middle staff is in treble clef with a key signature of one sharp (F#) and is labeled "2nd clar." above it. The bottom staff is in bass clef with a key signature of two sharps (F# and C#). Measure 6 contains a whole note chord in the top staff and a half note chord in the middle staff, with a sixteenth-note triplet in the bottom staff. Measure 7 contains a whole note chord in the top staff and a half note chord in the middle staff, with a sixteenth-note triplet in the bottom staff. Measure 8 contains a whole note chord in the top staff and a half note chord in the middle staff, with a sixteenth-note triplet in the bottom staff. A handwritten number "6" is centered below the first staff.

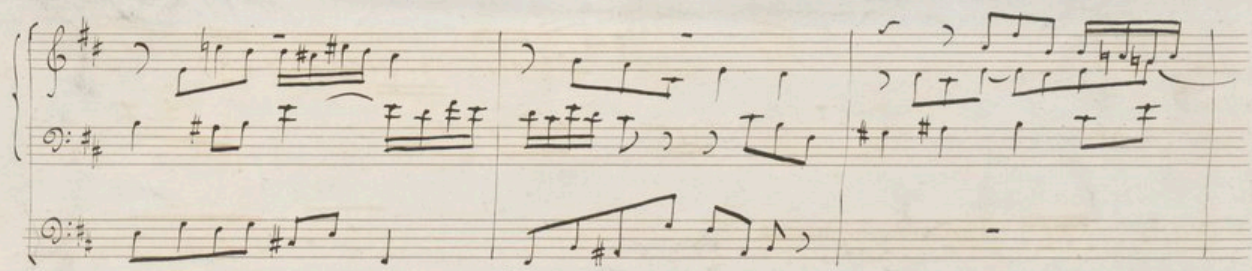
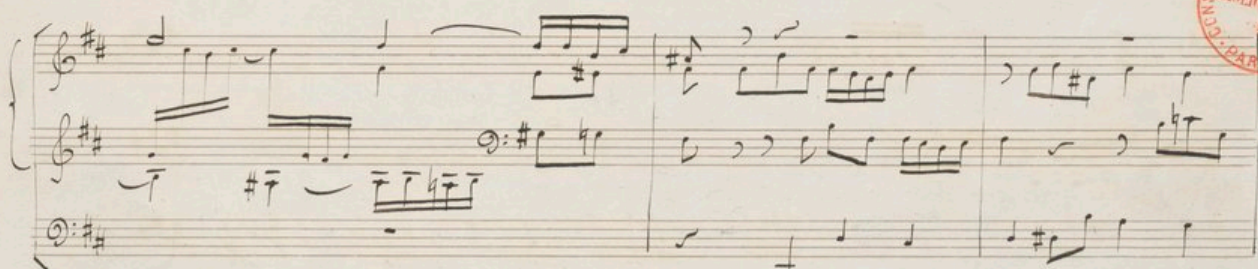
Handwritten musical score for measures 9-11. The system consists of three staves. The top staff is in treble clef with a key signature of two sharps (F# and C#). The middle staff is in treble clef with a key signature of one sharp (F#) and is labeled "2nd clar." above it. The bottom staff is in bass clef with a key signature of two sharps (F# and C#). Measure 9 contains a whole note chord in the top staff and a half note chord in the middle staff, with a sixteenth-note triplet in the bottom staff. Measure 10 contains a whole note chord in the top staff and a half note chord in the middle staff, with a sixteenth-note triplet in the bottom staff. Measure 11 contains a whole note chord in the top staff and a half note chord in the middle staff, with a sixteenth-note triplet in the bottom staff. A handwritten number "9" is centered below the first staff.

Handwritten musical score for measures 12-14. The system consists of three staves. The top staff is in treble clef with a key signature of two sharps (F# and C#). The middle staff is in treble clef with a key signature of one sharp (F#) and is labeled "1st clar." above it. The bottom staff is in bass clef with a key signature of two sharps (F# and C#). Measure 12 contains a whole note chord in the top staff and a half note chord in the middle staff, with a sixteenth-note triplet in the bottom staff. Measure 13 contains a whole note chord in the top staff and a half note chord in the middle staff, with a sixteenth-note triplet in the bottom staff. Measure 14 contains a whole note chord in the top staff and a half note chord in the middle staff, with a sixteenth-note triplet in the bottom staff. A handwritten number "12" is centered below the first staff.

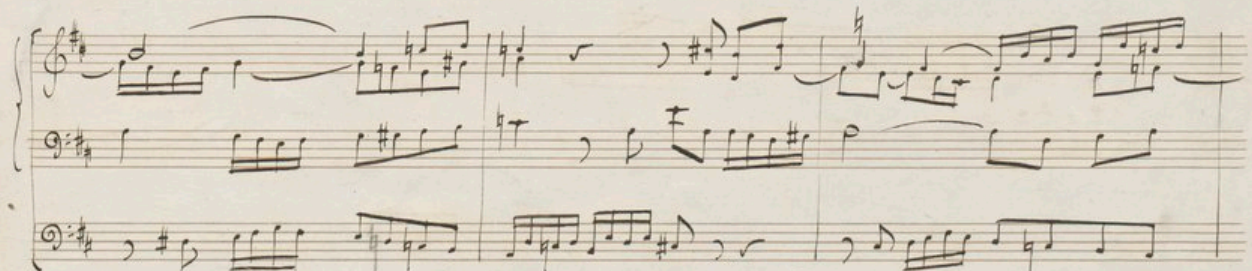
Handwritten musical score for measures 15-17. The system consists of three staves. The top staff is in treble clef with a key signature of two sharps (F# and C#). The middle staff is in treble clef with a key signature of one sharp (F#) and is labeled "1st clar." above it. The bottom staff is in bass clef with a key signature of two sharps (F# and C#). Measure 15 contains a whole note chord in the top staff and a half note chord in the middle staff, with a sixteenth-note triplet in the bottom staff. Measure 16 contains a whole note chord in the top staff and a half note chord in the middle staff, with a sixteenth-note triplet in the bottom staff. Measure 17 contains a whole note chord in the top staff and a half note chord in the middle staff, with a sixteenth-note triplet in the bottom staff. A handwritten number "15" is centered below the first staff.



15



16



21

Handwritten musical score system 1. It consists of three staves. The top staff is in treble clef with a key signature of two sharps (F# and C#). The middle staff is in bass clef with a key signature of two sharps. The bottom staff is in bass clef with a key signature of two sharps. The notation includes various notes, rests, and accidentals. A circled '2' is written above the middle staff, and a circled '3' is written below the bottom staff. A circled '4' is written to the right of the system.

Handwritten musical score system 2. It consists of three staves. The top staff is in treble clef with a key signature of two sharps. The middle staff is in bass clef with a key signature of two sharps. The bottom staff is in bass clef with a key signature of two sharps. The notation includes various notes, rests, and accidentals. A circled '2' is written above the middle staff, and a circled '3' is written below the bottom staff. A circled '4' is written to the right of the system.

Handwritten musical score system 3. It consists of three staves. The top staff is in treble clef with a key signature of two sharps. The middle staff is in bass clef with a key signature of two sharps. The bottom staff is in bass clef with a key signature of two sharps. The notation includes various notes, rests, and accidentals. A circled '2' is written above the middle staff, and a circled '3' is written below the bottom staff. A circled '4' is written to the right of the system.

Handwritten musical score system 4. It consists of three staves. The top staff is in treble clef with a key signature of two sharps. The middle staff is in bass clef with a key signature of two sharps. The bottom staff is in bass clef with a key signature of two sharps. The notation includes various notes, rests, and accidentals. A circled '2' is written above the middle staff, and a circled '3' is written below the bottom staff. A circled '4' is written to the right of the system.

Handwritten musical notation on a grand staff. The key signature is three sharps (F#, C#, G#). The notation includes various notes, rests, and dynamic markings such as *mf* and *p*. A measure number '6' is written below the staff.

Handwritten musical notation on a grand staff, continuing from the previous system. It includes notes, rests, and dynamic markings. A measure number '10' is written below the staff.



Wieda
Sept. / 94