

# Piano Quartet No. 2 in E-Flat Major

Cello

1. Allegro

Wolfgang Amadeus Mozart

Joshua Choe

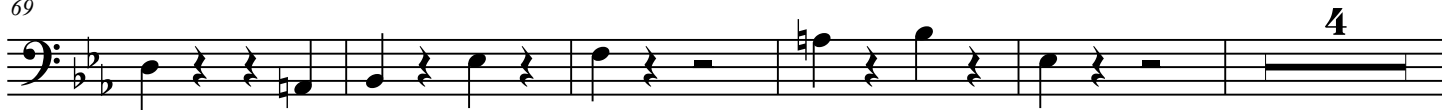
**Allegro**

The musical score for the Cello part is written in E-flat major (three flats) and common time (C). It consists of eight staves of music. The first staff begins with a forte (*f*) dynamic and a continuous eighth-note pattern. The second staff starts at measure 5, featuring a *dolce* marking and a sixteenth-note triplet, followed by a piano (*p*) section. The third staff, starting at measure 16, returns to a forte (*f*) dynamic with eighth-note patterns. The fourth staff, starting at measure 21, continues the eighth-note pattern. The fifth staff, starting at measure 26, includes a triplet and a piano (*p*) dynamic. The sixth staff, starting at measure 35, features a series of chords and rests. The seventh staff, starting at measure 42, includes a piano (*p*) dynamic and a nine-measure rest. The eighth staff, starting at measure 56, concludes with a piano (*p*) dynamic and a final chord.

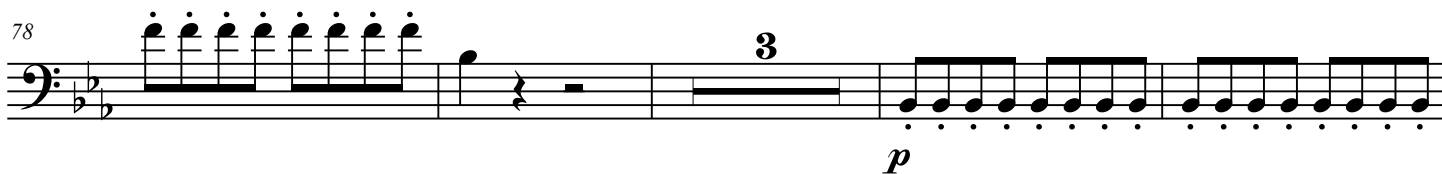
62



69



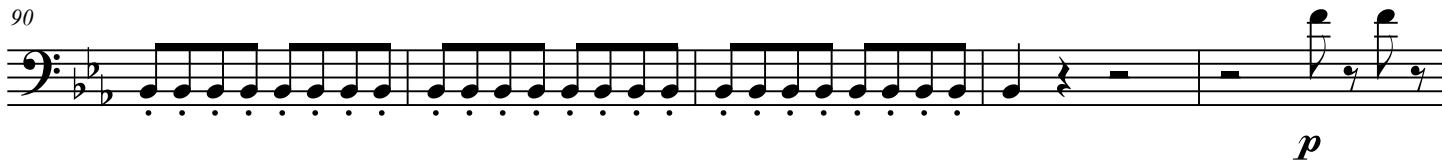
78



85



90



95



102



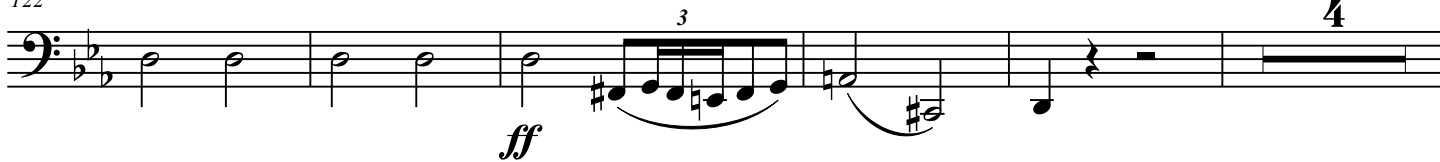
107



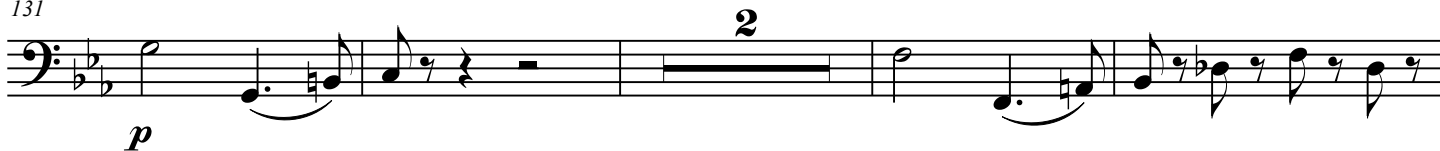
114



122



131



137



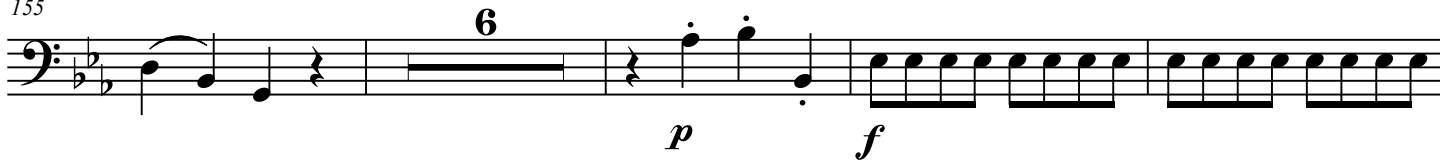
142



150



155



165



[illegible][illegible][illegible][illegible][illegible]

The musical notation for the bass staff shows the following notes and rests:

- Measure 1: A series of eighth notes starting from G<sub>2</sub> (one ledger line below) and ascending stepwise to D<sub>3</sub> (below the first line).
- Measure 2: Two eighth notes, E<sub>2</sub> and F<sub>2</sub>, followed by a quarter rest.
- Measure 3: A half note G<sub>2</sub>.
- Measure 4: A half note A<sub>2</sub>.
- Measure 5: A dotted half note B<sub>2</sub>.
- Measure 6: A half note C<sub>3</sub>.
- Measure 7: A half note D<sub>3</sub>.
- Measure 8: A half note E<sub>3</sub>.

[illegible]

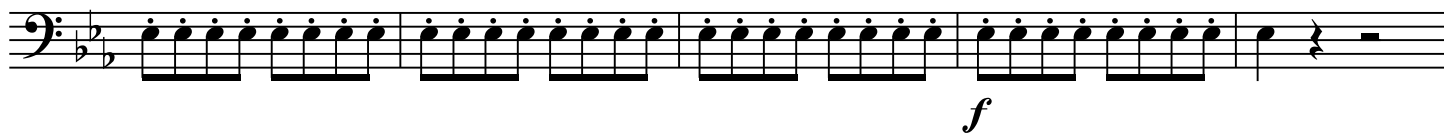
The bass line of 'The Rose Tree' is written in 3/4 time with a key signature of one flat (B-flat). The melody consists of the following notes and rests across seven measures:

- Measure 1: Quarter note G2, quarter note A2, quarter note B-flat2.
- Measure 2: Quarter note G2, quarter note F2, half note E2.
- Measure 3: Quarter note D2, quarter note C2, quarter note B-flat2.
- Measure 4: Quarter note A2, quarter note G2, quarter note F2.
- Measure 5: Quarter note E2, quarter note D2, quarter note C2.
- Measure 6: Quarter note B-flat2, quarter note A2, quarter note G2.
- Measure 7: Quarter note F2, quarter note E2, quarter note D2.

230



235



240



246



# Cello

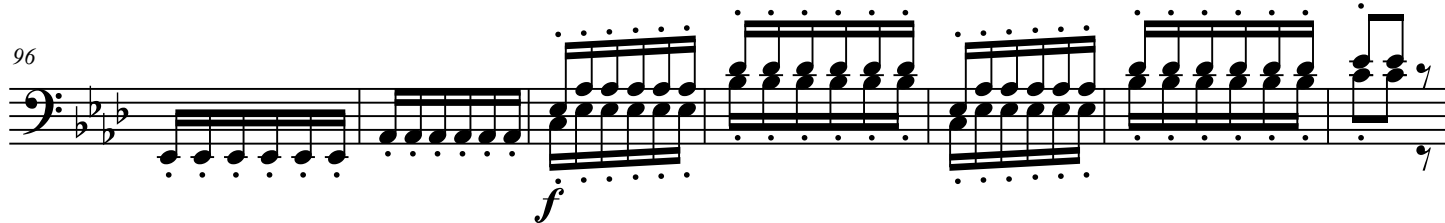
**Wolfgang Amadeus Mozart**  
Joshua Choe

Musical score for "The Swan" by Camille Saint-Saëns, bass clef, 3/8 time, key of B-flat major. The score consists of 8 staves of music. It includes various musical notations such as rests, eighth notes, sixteenth notes, and triplets. Dynamics include *p*, *mp*, *f*, and *cresc.* markings. The piece ends with a double bar line and repeat signs.

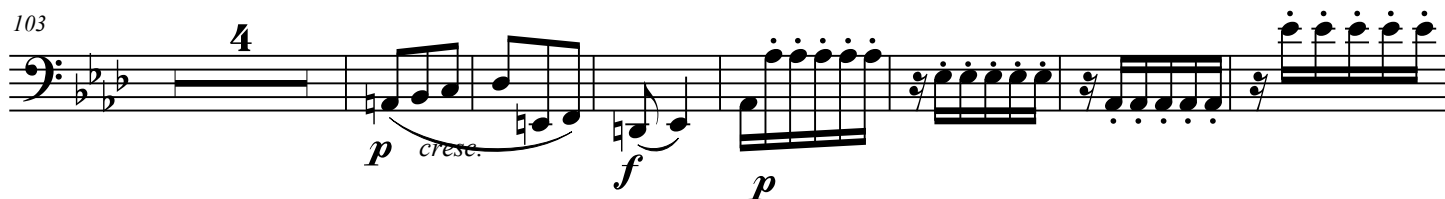
88



96



103



114



125



# Piano Quartet No. 2 in E-Flat Major

Cello

3. Allegretto

Wolfgang Amadeus Mozart

Joshua Choe

**Allegretto**

8

*f*

13

*p*

18

23

29

21

*cresc.*

56

*f*

62

67

3 3 3 8



135

**11**

*f*

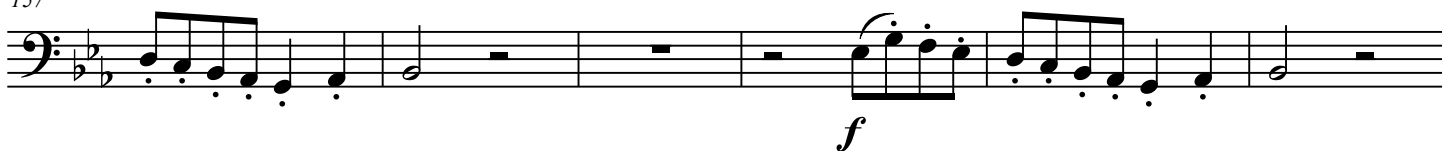
# Piano Quartet No. 2 in E-Flat Major

3

151



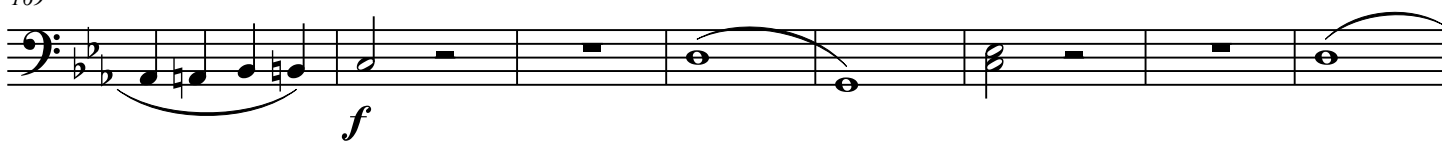
157



163



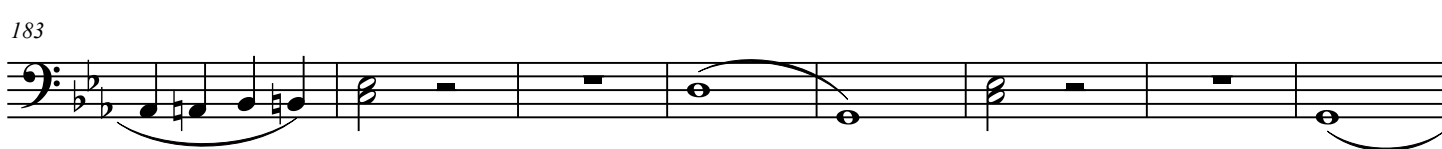
169



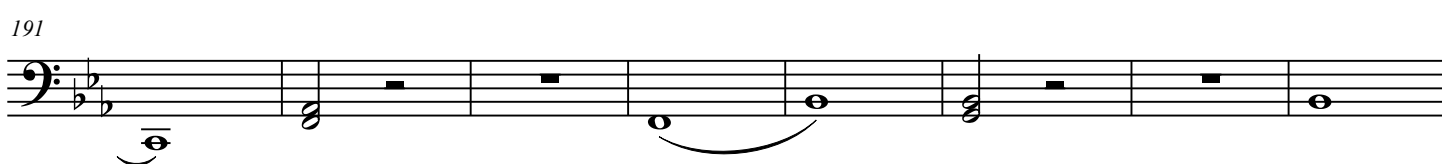
177



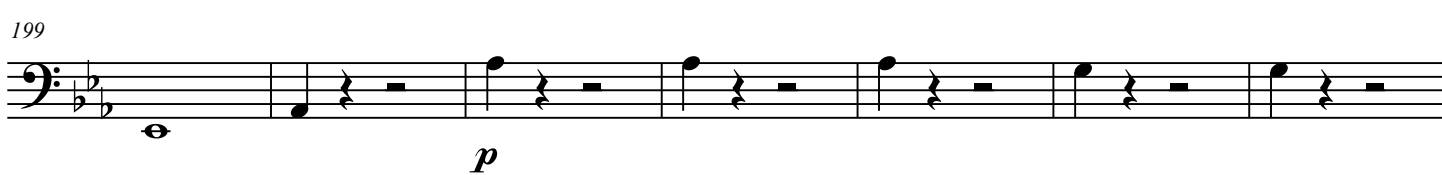
183



191



199



206



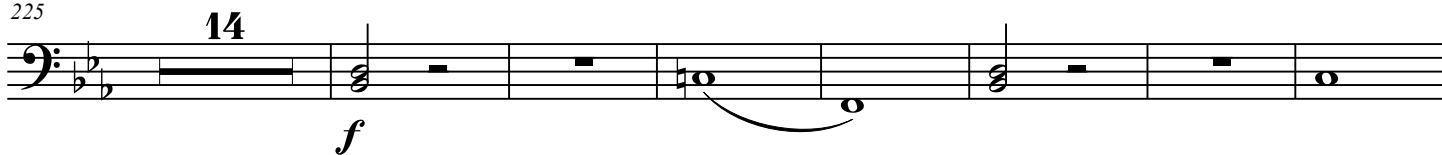
213



219



225



246



256

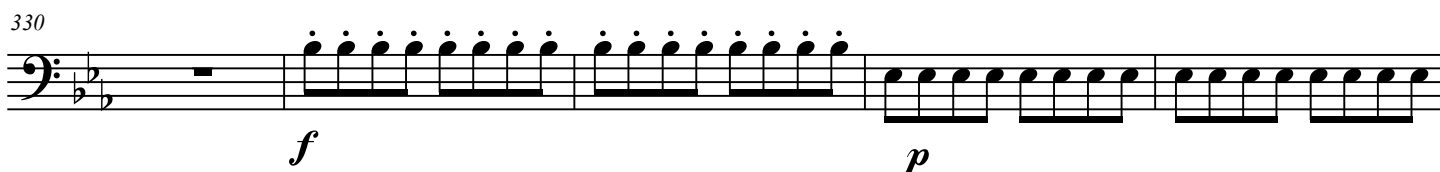
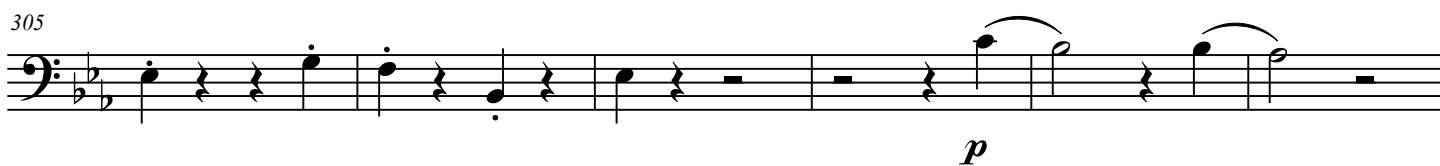
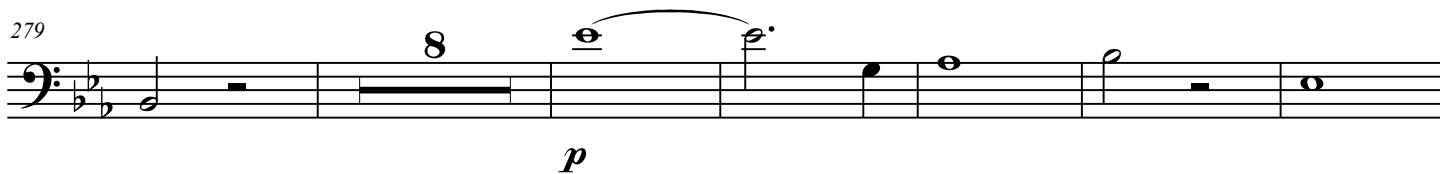


263



268





360



365



372



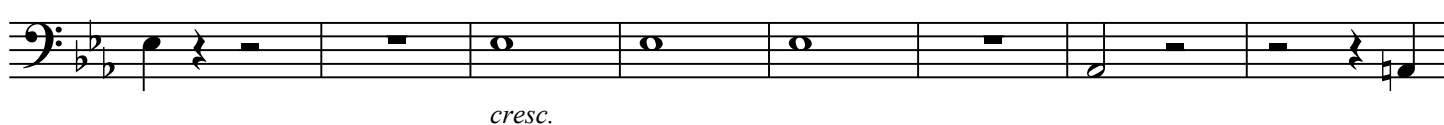
376



380



386



394



399



Piano Quartet No. 2 in E-Flat Major

7

407

