

Duet for 2 Tenor Trombones in G major, Op.2505

Tenor Trombone

Stephen W. Beatty (1938)

♩ = 95

5 *mf* *ff* 3 *f*

9 *f* *mp* *f*

13 *mf*

18

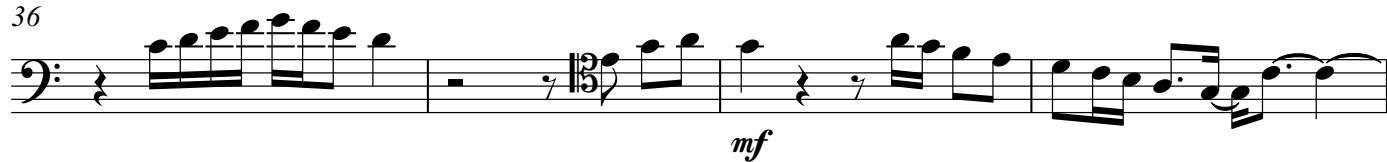
22 3 *f* *mf*

26 *mp* *mf*

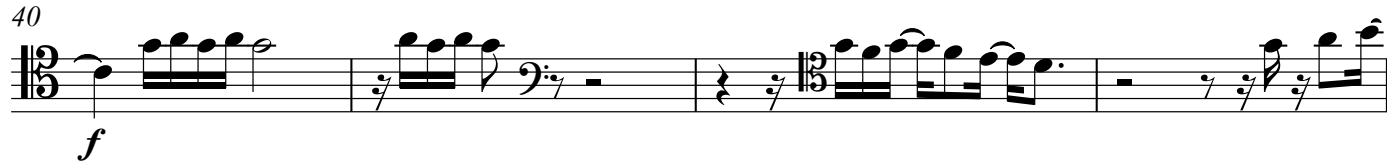
30

33 *f* *mf* *mp*

36



40



44



48



52



56



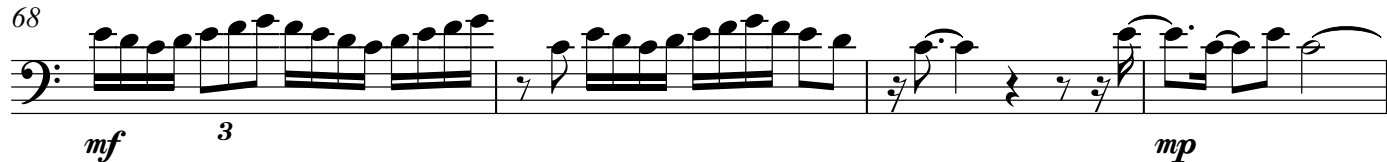
60



64



68



72



Tenor Trombone

3

76



80



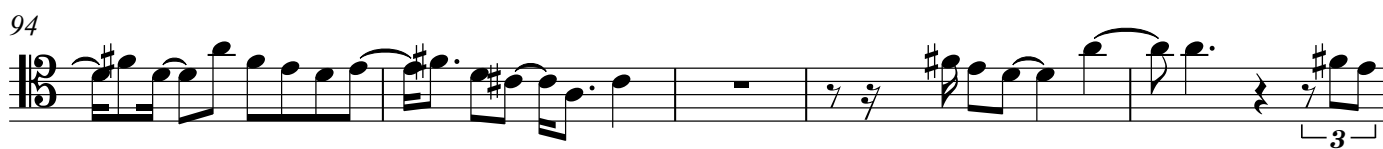
84



89



94



99



103



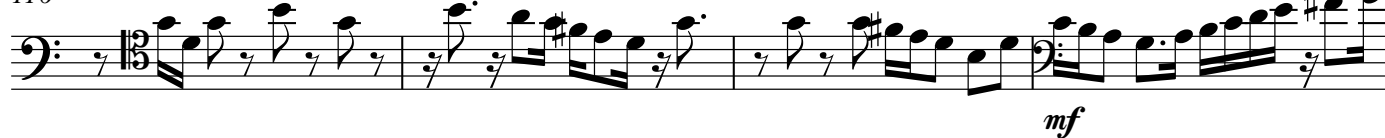
108



112



116



120



124



128



132



136



139

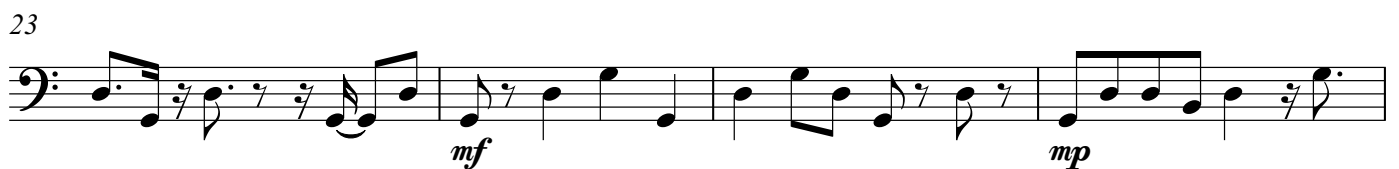


Duet for 2 Tenor Trombones in G major, Op.2505

Tenor Trombone 2

Stephen W. Beatty (1938)

♩ = 95



V.S.

39



43



47



51



55



59



64



68



72



76



80



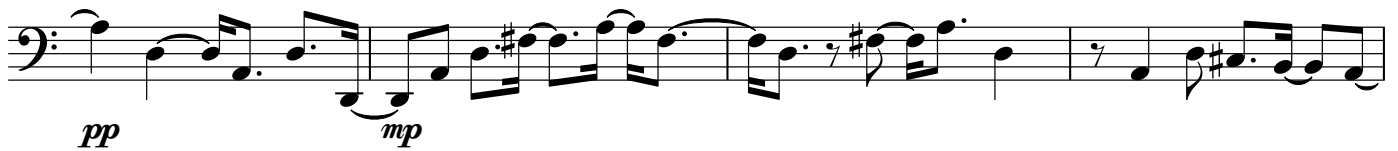
85



90



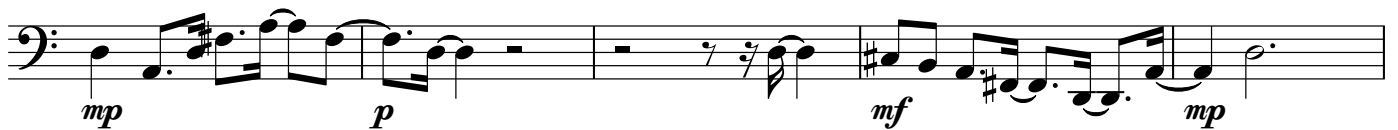
95



99



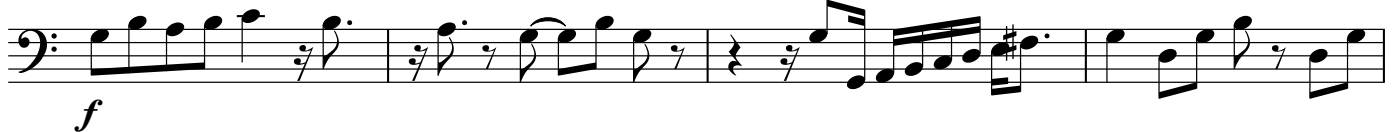
103



108



113



117



121



125



129



133



137

