

PREMIER LIVRE

DE

SONATES

*A Violon Seul  
avec la Basse Continue*

Composées

PAR M. LECLAIR L'AINE.

*Dédiées*

A MONSIEUR BONNIER

*Tresorier Général des Etats  
de Languedoc.*

*Il y a quelques uns de ces Sonates qui peuvent se jouer sur la Flute Traversiere.*

Prix en blanc 15 <sup>l</sup>

---

SE VEND A PARIS

Chez { *L'auteur, rue S.<sup>t</sup> Benoît près la porte de l'Abaye S.<sup>t</sup> Germain  
La V.<sup>e</sup> Boivin, rue S.<sup>t</sup> Honoré à la Règle d'Or.  
Le S.<sup>t</sup> Leclerc, rue du Roule à la Croix d'Or  
La V.<sup>e</sup> Roussel, dans l'Abaye S.<sup>t</sup> Germain des Pres à la  
Bouree Royale, près la petite Boucherie*

*Avec Privilège du Roy.*

In preparing this edition, I used a facsimile of an edition published in Paris.. As to its date I cannot be certain but suspect it to be contemporary with Leclair if not the original edition. I think it is important that the performer should decide on any changes made to text, therefore all notes and articulation are as originally printed. Where any anomalies occur, the original has been placed in brackets above the note. Occasionally fingerings appear and have been retained more for interest although some do seem logical for tonal reasons. All inconsistencies in slurs have also been kept. This may be what was intended or perhaps they are just printing errors. Dynamic markings do occasionally appear and are original.

I

The realization of the figured bass is only rudimentary and is intended for those unable to realize their own.

John Wade 2012

# Jean Marie Leclair

(1697-1764)

## Sonatas for Violin Opus 1

### Volume 2 (5 - 8)

#### Sonata No 5 in A Minor

**Allegro ma non troppo**

6 6 6 5 6 5

P 2 Violin  
P 2 Cembalo  
P 1 Cello

#### Sonata No 6 in E Minor

**Adagio**

2nd Time #6 5 6 5 5 2 5

P 7 Violin  
P 12 Cembalo  
P 5 Cello

#### Sonata No 7 in F Major

**Adagio**

2nd Time 6 6 7 7 6 6 #6 5 7 5

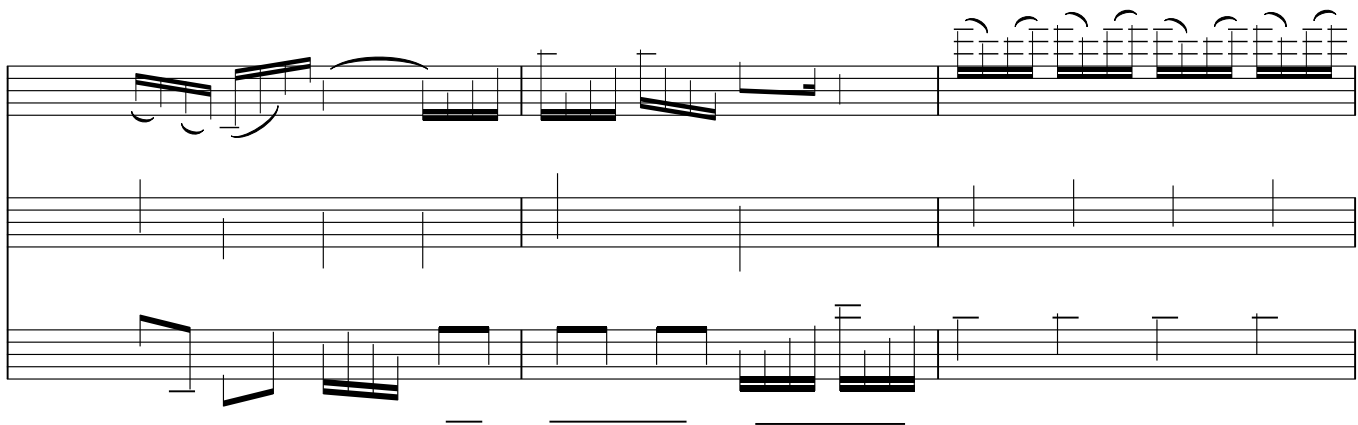
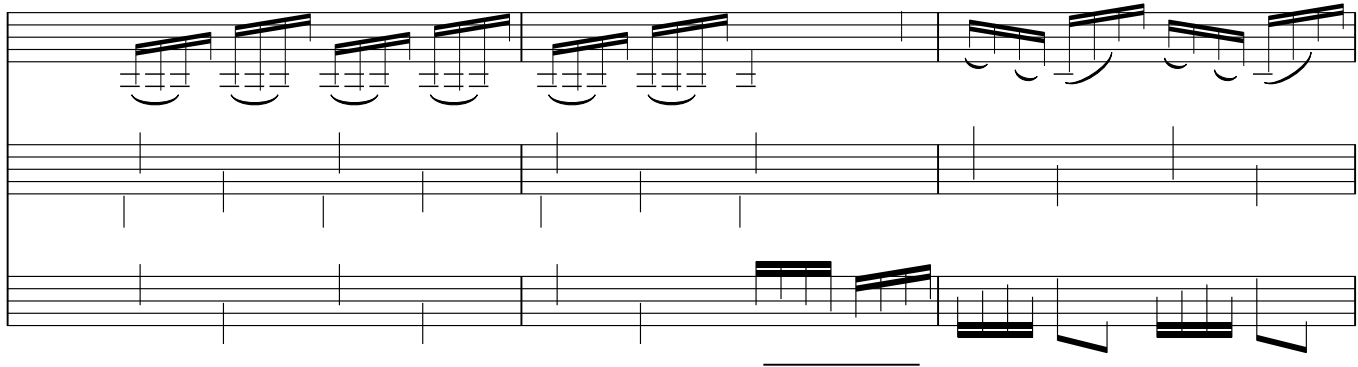
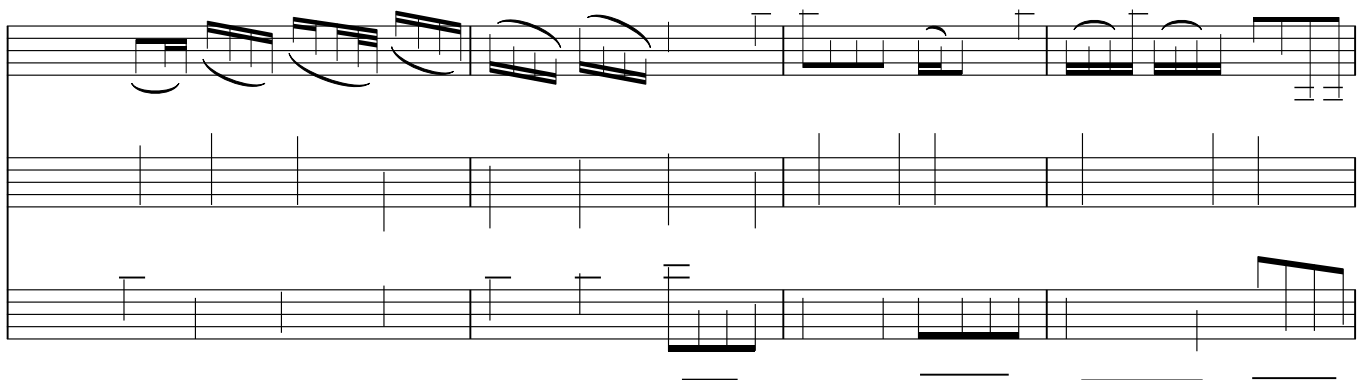
P 12 Violin  
P 28 Cembalo  
P 12 Cello

#### Sonata No 8 in G Major

**Largo**

6 6 5 9 6 4 3

P 19 Violin  
P 44 Cembalo  
P 17 Cello



15

6 6 6 6 6 6 6 6 6 6

18

5 7 6 6 6 6 6 7 # 7 5

21

# 7 5 # #6 6 #6 6 #6 5 7 #

24

# 6 6 # 6 6 6 # 6 5 6 5 4 #3

27

Measures 27-30 of a musical score in A major (three sharps). The score is written for a single melodic line and a piano accompaniment. The piano part consists of a right hand with chords and a left hand with a bass line. Fingering numbers (6, 5, #, 6, 5, #) are indicated below the left hand staff.

31

Measures 31-33 of the musical score. Measures 31 and 32 feature a melodic line with slurs and accents. The piano accompaniment continues with chords in the right hand and a bass line in the left hand. Fingering numbers (6, 5, #, 6, 6, 6, 5) are indicated below the left hand staff.

34

Measures 34-36 of the musical score. Measures 34 and 35 feature a melodic line with slurs and accents. The piano accompaniment continues with chords in the right hand and a bass line in the left hand. Fingering numbers (#, 5, #, 5, #, 5, #, 6, #, 6, #, 6, 4, 3, 5) are indicated below the left hand staff.

37

Measures 37-40 of the musical score. Measures 37 and 38 feature a melodic line with slurs and accents. The piano accompaniment continues with chords in the right hand and a bass line in the left hand. Fingering numbers (6, 6, 6, 6, #, 6, #) are indicated below the left hand staff.

40

Measures 40-42 of a musical score in A major (three sharps). The score is written for three staves: Treble, Piano (Grand staff), and Bass. Measure 40 features a melodic line in the Treble staff with eighth-note patterns and a '+' sign above the final note. The Piano staff provides harmonic support with chords and moving lines. The Bass staff has a melodic line with a '+' sign above the final note. Fingerings are indicated by numbers 1-5 below the notes. Measure 41 continues the melodic and harmonic development. Measure 42 concludes the system with a final melodic phrase in the Treble staff and a '+' sign above the final note.

43

Measures 43-45 of a musical score in A major. Measure 43 shows a melodic line in the Treble staff with a '+' sign above the final note. The Piano staff continues with harmonic support. The Bass staff has a melodic line. Measure 44 continues the melodic and harmonic development. Measure 45 concludes the system with a final melodic phrase in the Treble staff and a '+' sign above the final note.

46

Measures 46-48 of a musical score in A major. Measure 46 features a melodic line in the Treble staff with a '+' sign above the final note. The Piano staff continues with harmonic support. The Bass staff has a melodic line. Measure 47 continues the melodic and harmonic development. Measure 48 concludes the system with a final melodic phrase in the Treble staff and a '+' sign above the final note.

**Sarabanda**  
**Largo**

6

5 6 4 3 6

7

#6 5 6 #4 6 6 4 7 #3

12

5 6 7 6 #6 4 7 #3

17

# #6 5 7

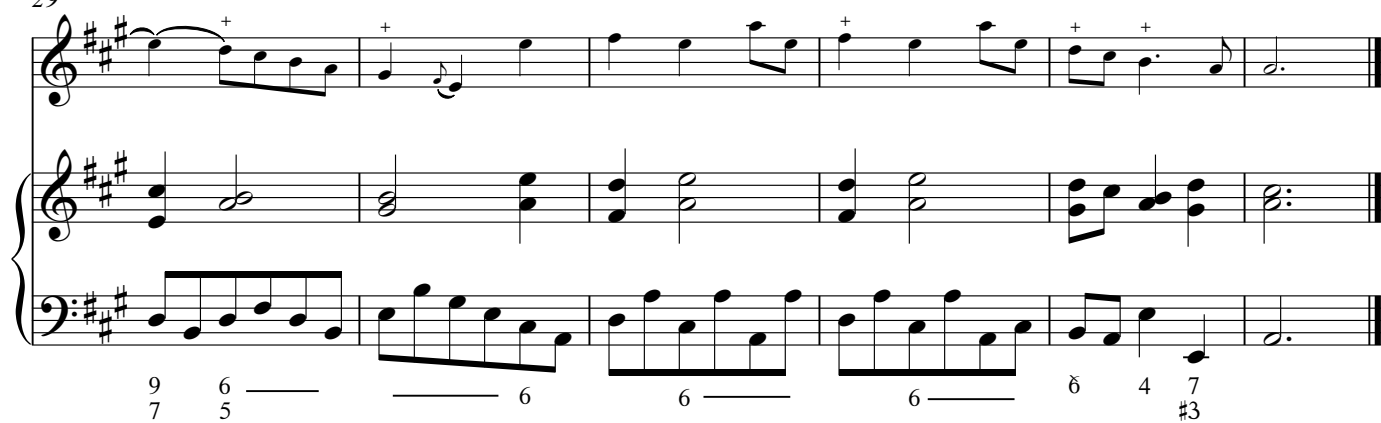


23



Handwritten musical score for measures 23-28. The score is written for a single melodic line on a treble clef staff with a key signature of three sharps (F#, C#, G#). The melody consists of eighth and quarter notes, with some measures containing a '+' sign above the note. The bass line is written on a grand staff (treble and bass clefs) with a key signature of three sharps. It features a sequence of chords and a descending eighth-note line in the bass. Below the bass line, there are handwritten numbers: 9, 6, #4, 6, 6, 4, #3, 7, 5, and a blank line.

29



Handwritten musical score for measures 29-34. The score is written for a single melodic line on a treble clef staff with a key signature of three sharps (F#, C#, G#). The melody consists of eighth and quarter notes, with some measures containing a '+' sign above the note. The bass line is written on a grand staff (treble and bass clefs) with a key signature of three sharps. It features a sequence of chords and a descending eighth-note line in the bass. Below the bass line, there are handwritten numbers: 9, 6, 7, 5, a blank line, 6, 6, 6, 6, 6, 6, 4, 7, and #3.

# Giga Presto

Measures 1-6 of the musical score. The piece is in 6/8 time with a key signature of three sharps (F#, C#, G#). The right hand features a continuous eighth-note melody. The left hand provides harmonic support with chords and single notes. Fingering numbers 6, 6, 5, and 6 are indicated below the bass staff for measures 4, 5, 6, and 7 respectively.

Measures 7-12 of the musical score. Measure 7 begins with a first ending bracket. Measure 8 includes a trill marked with a '+' sign. Measures 9-12 show a second ending bracket. Dynamics include piano (*p*) in measures 10 and 12. Fingering numbers 6, 4, 3, 6, and 5 are indicated below the bass staff for measures 7, 8, 9, 10, and 11 respectively.

Measures 13-18 of the musical score. Measure 13 includes a trill marked with a '+' sign. Dynamics include forte (*f*) in measures 14 and 15. The right hand continues with eighth-note patterns, while the left hand plays chords and moving lines. Fingering numbers 6, 5, 6, 5, 6, and 6 are indicated below the bass staff for measures 13, 14, 15, 16, 17, and 18 respectively.

Measures 19-24 of the musical score. The right hand features a more complex eighth-note melody. The left hand continues with harmonic support. Fingering numbers 5, #6, #, 6, #, 6, and # are indicated below the bass staff for measures 19, 20, 21, 22, 23, 24, and 25 respectively.

25

6 4 #3  
5 6 6 — 6 / 5 6

31

6 6 4 3 # — 6 #6

37

# — 6 #6 — 7 6 # 5 7 # — 5

43

7 5 6 5 #6 5 7 5 6

49

*p*

*p*

5 6 # #6 6

54

*f*

*f*

6 5 #6 6 6 4 #3 5 7 # 5

60

6 7 5 #4 #6 7 7

65

6 6 6 6

69

6 — 5      6      6      6 5

74

6      6      6      4      3

## Sonata VI

*Cette Sonate peu ce jouer sur la Flute Allemande*

Jean Marie Leclair

## Adagio

2nd Time

#6 5 — 6 5 6 5 2 5

6 7 7 7 7 5 # 5

# 7 6 #6 5 6 # 6

1.

7 3 7 #6 4 #3 6

12

6 # 6 5 # 6 # 6 5 # 6 6 5

15

6 5 4 6 5 4 3

18

6 6 # # 6

21

7 7 7 3 7 6 4 #3 7 # 6 5 7

24

6 6 #6 5 6 5 6 5 #

26

#6 7 3 7 6 6 6 5 4 #3

### Vivace

4 #3 7 6 5 7 #

6

9 5 7 9 3 7 9 5 7 6



11

7 5 # 9 6 7 6 7 6 7 #6 5

16

9 6 5 9 7 #6 #6 # 6 #6 #6 5 5

21

*p* 3 3 3 *p* 6 4 6

26

*f* *f* #6 5 4 #3 7 7 6 7 # 6

31

7 # 5 #4 6 #6 #4 3 6

36

6 4 #3 5 7 7 7 9 5

41

7 6 4 3 7 6 5

46

7 7 6 7 6 7 6

51

6 4 3 6 4 6 6 7 6 7 6 4

57

7 6 #4 7 6 4 #3 7 6 6 6 5 4 5

62

7 6 6 #6 5

67

6 7 7 4 #3 4 6 #3 4

73

7 6 5 # 6 6 7 6 #6 6 6

78

7 #6 5 6 #4

83

6 # 7 7 6 7 3 6 7 7 6

88

#5 7 6 6 # 7 5 7 5 9 3

93

7 6 5 9 5 7 9 3 7 5

98

# 6 2 5 2 6 5 2 5

103

4 #3 7 6 5 7 # 7 7

108

7 7 7 7 9 8 6 6 5 4 #3 6

*p* *p*

113

7 7 6 7# 3 6 4 7 7 6 5

116

#5 7 6 6 4 #3

**Aria**  
**Affetuoso**

6 5 6 #4 6 5 6 #6 3 7

5

6 5 7 #4 #6 4 #3

9

9

*p* *f* *p* *f* *p*

7 # 7 # 7 7

14

14

*f* *p*

6 7 6 5 6 #4 6 6 5 7 6

18

18

*f*

#4 6 6 5 7 6 6 3 5 4 3 6 5

22

22

*f*

6 # #4 6 6 6 #6 3 7 6 5

26

5 7 #4 #6 4 #3 # 6 9 7 #

31

3 6 6 7 3 6 6 6 6 # 6 7 6 6 7

35

3 b7 #6 6 7 #6 6 6 5 #

38

# 6 4 #3 7 7 5



42

42

# #4 #δ 3 # 6 5 δ # #4 6

46

46

6 6 #δ 3 7 # 6 5 6 5 #δ 3 7 # 6 5 δ # 5

49

49

7 #4 #δ 4 #3

## Allegro

Measures 1-8 of the musical score. The piece is in 2/4 time with a key signature of one sharp (F#). The melody is in the treble clef, and the accompaniment is in the bass clef. The melody features eighth and sixteenth notes, with some measures containing a '+' sign above the staff. The bass line consists of a steady eighth-note pattern. Fingering numbers (6, 5, #, 6, 5, 6, 5) are indicated below the bass staff.

Measures 9-16 of the musical score. The melody continues with eighth and sixteenth notes, including some beamed sixteenth notes. The bass line remains a steady eighth-note pattern. Fingering numbers (6, 5, 8, 5, 5, #, #) are indicated below the bass staff.

Measures 17-25 of the musical score. The melody includes a trill in measure 17 and continues with eighth and sixteenth notes. The bass line is a steady eighth-note pattern. Fingering numbers (6, 5, 4, #3, 6, 5, 6, 5, 6, 5) are indicated below the bass staff.

Measures 26-32 of the musical score. The melody features a series of beamed sixteenth notes. The bass line continues with a steady eighth-note pattern. Fingering numbers (6, 5, 7, 6, 7, 6, 7, 6, 7, 5) are indicated below the bass staff.

34

6 — 7 5 6 4 7 6 5 7 5 — 6 3 6

43

# 5 7 7 7 7 7 6 7 6

52

7 6 # — # 6 6 #6 5 # — 6 5 —

60

6 5 6 — 7 5 6 7 6 5 — 6

68

Figured Bass: 6̣ 6 5 # — 6 9 9 9 5 9 6 #4 6 6 #3 4

77

Figured Bass: #4 6 6̣ 5 — #4 6 #6̣ 5 —

86

Figured Bass: 5 6 6̣ 6 # — 6 5 6̣ 5 —

94

Figured Bass: b6 5 — 8 5 — 6 5 — #6 5 — 6 #6 6 7 b —

103

5 — 6 8 5 #6 6 3 #

112

6 9 7 # 5 6 3 6 #3

120

6 9 7 7 # 6 3 6 #3

## Sonata VII

## Adagio

2nd Time

6 6 7 7 — 6 6 #6 5 — 7 — 5

4

4 3 — #6 — # — 6 7 — 6 5 7 — 6 7 #6 5

7

1.

# #6 7 — 5 — 6 6 7 5 # 6 6

2.

2 5 #4 6 — 9 6 — # — 6 6 # 6 5

13

6 4 #3 5 — 5 — 7 — 5 — 6 — 5 — b4 3 —

16

6 — 5 — 6 7 — 6 5 7 — 6 7 6 5

19

6 7 — 5 6 4 3

10

*p* *pianissimo* *f*

*p* *pianissimo* *f*

6 5 6 4 6 5 4 3 6



13

6 5 6 4 6 6 9 8 4 3

15

9 5 9 6 #6 4 #3

6 4 #4 6 6 7 # 5 6 6 #

19

6 7 5 6 7 5 6 7 5

22

6 — 7 5 6 — 7 5 6 — 7 5

25

7 5 7 7 6 5 7 5

28

5 7 6 6 7 6 6 3 6 6 5 #

31

6 6 5 6 6 5 6 b6 5 7

34

7# 7 8 7 6 2 5 2 6 5

37

2 6 2 6 #4 6 7 4 3 6

40

6 6 6 6 9 8 4 3 5 4

42

9 5 9 6 6 4 3

**Aria**  
**Gratoso**

Measures 1-6 of the Aria. The music is in 3/4 time, key of B-flat major. The vocal line features a melodic line with a trill in measure 2 and a trill in measure 4. The piano accompaniment consists of a steady eighth-note pattern in the left hand and chords in the right hand. Fingering numbers 5, 5, 5, 6, 6 are indicated below the piano part.

Measures 7-12 of the Aria. The vocal line continues the melodic line with a trill in measure 10 and a trill in measure 12. The piano accompaniment continues with the eighth-note pattern in the left hand and chords in the right hand. Fingering numbers 5, 6, 5, 5, 5 are indicated below the piano part.

Measures 13-18 of the Aria. The vocal line features a melodic line with a trill in measure 14 and a trill in measure 16. The piano accompaniment continues with the eighth-note pattern in the left hand and chords in the right hand. Fingering numbers 6, 6, 7, 4, 3, 6, 6, 5 are indicated below the piano part.

Measures 19-24 of the Aria. The vocal line features a melodic line with a trill in measure 20 and a trill in measure 22. The piano accompaniment continues with the eighth-note pattern in the left hand and chords in the right hand. Fingering numbers 6, 6, 5, 6, 6, 5, 4, 3, 6, 6, 5, 6, 5, 5 are indicated below the piano part. Dynamics *p* and *f* are marked above the vocal line and below the piano part.

25

Fingering: # — 5 — 7 # — 5 — 7 6 #4 6

31

Fingering: #4 6 4 #3 — 5 — 5 5

37

Fingering: — 6 6 5 — 6 5 —

43

Fingering: — 5 5 — 6 6 7 — 4 3

49

6 5 4

55

6 7 5 4 7 6 5

62

4 6 6 4 3 6 6 6

68

6 6 6 6 5 6 5

74

5 5 6 6 5

80

6 5 5 5 6

86

6 7 4 3 #5 6 # 7 #

92

6 7 6

98

5 7 6 4

104

7 5 5

110

6 6 5 6 5

116

5 5 6 6 7 4 3



**Giga**  
**Allegro ma non troppo**

5 6 6

6 6 6 6 6 6

# 5 # 6 9 7 9 #6 5 #6

6 6 # 6 6 6 6 6 6 6 4 #3

14

5 6

17

6 5 # # 5 7 # 5 7

20

6 7 5 # 5 7 7 7 7

23

7 7 # 6 6 5 # 6 6 5 6 6 5 6 5

26

*f*

6 4 #3 — # — 5 — # — 5 7 5

29

5 — 5 b7 — 5 — 6 6 3 6 6 6 3 6 6

32

7 — 6 3 5 — 6

35

*p* *f*

*p* *f*

6 6 — 6 6 6 6

38

6 — 9 6 5 7 6 — 7 6 7 5 6

41

7 6 6 — 7 7 7 7 7 5 7 # 3 7 #

44

*p* *p*

6 6 5 6 6 5 6 — 4 3



## Sonata VIII

**Largo**

8

6 6 5 9 6 4 3

4

6 6 7 7 7 3 5 4 3 6 6 4 3

7

6 7 7 7 7 6 7 7 9 6 4 6

10

\*1 3

2 #6 6 #3 5 4 #3 6 6 6 6 6 6 6 6 6 6

13

#4 6 #6 5 4 #3 6 # 6

15

# 6 5 9 6 4 3 # 6 6 7 7

18

7 7 # 6 b7 7 6 5 # 7

21

6 5 # # 6 7 6 9 6 4 3

[illegible]

30

\*1 3 3 +

1. 2.

#4 6 8 6 4 3 6



P.T.O  
Vivace

**Vivace**

Measures 1-4 of the piece. The piano accompaniment features a walking bass line in the left hand and a melody in the right hand. The melody consists of eighth-note patterns and rests. The bass line includes fingerings 6, 6, and 5.

Measures 5-9. The piano accompaniment continues with a walking bass line and a melody with eighth-note patterns. The bass line includes fingerings 2, 7, 6, 4, 2, 7, 6, 4, 2, 7, 6, 2, 7, 6, #4, and 6.

Measures 10-14. The piano accompaniment continues with a walking bass line and a melody with eighth-note patterns. The bass line includes fingerings 6, 5, 3, 7, 6, 4, 3, 7, 5, 7, #, 9, 4, 3, 6, 6, 6, 5.

Measures 15-19. The piano accompaniment continues with a walking bass line and a melody with eighth-note patterns. The bass line includes fingerings #, 6, 6, 5, 6, 4, 5, 6, 4, 6, 5, #, 7.

19

1. 2.

6 6 # 6 6 # 7 6

5

23

6 6 # 5 6

28

6 5 # 5 7 5 7 9 3 4

33

7 5 7 9 3 7 5 b7 b4 3 6 b6 6 6 6 5 4 6 4 #3

38

38

43

43

48

48

52

52

57

9 6 4 3 9 6 7

61

7 7 7

64

6 #4 6 6 4 3

**Musette**  
**Affetuoso**

Measures 1-6 of the piece. The music is in 3/4 time with a key signature of one sharp (F#). The melody in the treble clef features eighth and sixteenth notes, with a trill marked with a '+' in measures 4 and 6. The bass line consists of eighth notes. The piano accompaniment in the grand staff features chords and single notes, with a trill marked with a '+' in measure 4. Fingering numbers 7, 8, and #7 are indicated below the piano part.

Measures 7-12 of the piece. Measure 7 begins with a repeat sign. The melody continues with eighth and sixteenth notes. The piano accompaniment includes chords and single notes. Fingering numbers 7, 8, #7, 3, 6, 4, 3, 6, 4, 3, #7, and 8 are indicated below the piano part.

Measures 13-18 of the piece. Measure 13 begins with a repeat sign. The melody continues with eighth and sixteenth notes, including a trill marked with a '+' in measure 15. The piano accompaniment includes chords and single notes. Fingering numbers 6, 4, 3, 6, 5, #, 6, #7, and 8 are indicated below the piano part.

19

19 20 21 22 23 24

25

25 26 27 28 29 30

31

31 32 33 34 35 36

38

8 ————— 6 ————— #7 ————— 8

4

43

#7 8 ————— #7 8 #7 8 #7 8



Tempo Gavotta  
Allegro

55

Measures 1-3 of the Gavotta. The music is in G major (one sharp) and 2/4 time. The melody is in the right hand, and the accompaniment is in the left hand. The left hand features a rhythmic pattern of eighth and sixteenth notes.

4 3 5 9 6 7 7 4 3

Measures 4-6 of the Gavotta. The music continues with the same key and time signature. The melody and accompaniment are shown. The left hand has a rhythmic pattern of eighth and sixteenth notes.

4 3 5 9 6 7 7 4 3

Measures 7-9 of the Gavotta. The music continues with the same key and time signature. The melody and accompaniment are shown. The left hand has a rhythmic pattern of eighth and sixteenth notes.

7 5 #4 6 3

Measures 10-12 of the Gavotta. The music continues with the same key and time signature. The melody and accompaniment are shown. The left hand has a rhythmic pattern of eighth and sixteenth notes.

5 # #4 6 # 7

17

7 6 7 6 # 5

21

# 6 5 4 #3 6 6

25

4 3 5 9 6 7 7 4 3

29

4 3 5 9 6 7 7 4 3 6 9 6 5

34

Measures 34-37 of a musical score. The system consists of three staves: a single treble staff and a grand staff (treble and bass). The key signature has two sharps (F# and C#). The treble staff contains a continuous eighth-note melody. The grand staff provides harmonic support with chords and single notes. Measure numbers 34, 35, 36, and 37 are indicated below the bass staff.

38

Measures 38-41 of a musical score. The system consists of three staves: a single treble staff and a grand staff (treble and bass). The key signature has two sharps (F# and C#). The treble staff contains a continuous eighth-note melody. The grand staff provides harmonic support. Measure numbers 38, 39, 40, and 41 are indicated below the bass staff.

42

Measures 42-45 of a musical score. The system consists of three staves: a single treble staff and a grand staff (treble and bass). The key signature has two sharps (F# and C#). The treble staff contains a continuous eighth-note melody. The grand staff provides harmonic support. Measure numbers 42, 43, 44, and 45 are indicated below the bass staff.

46

Measures 46-49 of a musical score. The system consists of three staves: a single treble staff and a grand staff (treble and bass). The key signature has two sharps (F# and C#). The treble staff contains a continuous eighth-note melody. The grand staff provides harmonic support. Measure numbers 46, 47, 48, and 49 are indicated below the bass staff.

50

50 51 52 53 54

6 7 8

55

55 56 57 58

7 5

59

59 60 61 62

6 5 4 3 5 9 6 7

63

63 64 65 66

7 4 3 4 3 5 9 6 7 7 4 3

68 Arpeggio

6 4 #7 8 6 4 #7 8 5 4 #7 3

74

5 #7 3 2 8 7 7 # 7 7 7

79

4 3 5 9 6 7 7 4 3

83

4 3 5 9 6 7 7 4 3

## Altri

6 7 6 # 6 5 b 7 #

6 7 6 # 5 4 #3

5 6 6 6

6 5 6 b 6 5 6 #4 6 #4 6 6 b 4 3

18

6 7 6 7 6 7

23

6 7 6 7 6 7

28

6 7 6 7 6 7

33

6 7 6 7 6 7

38

# — 6 7 8 # 6 5 7 #

43

6 7 8 # 9 4 3 # —

48

# — b — 4 3 b b7 —

53

4 3 9 # 9 # 9 9 6 5 b b9 # 9 7



58

58

63

68

72

# 7 6 # 6 7 6 #

63

63

68

72

6 5 7 # 6 7 6 # 5 4 #3

68

68

72

4 3 5 9 6 7 7 4 3

72

72

76

4 3 5 9 6 7 7 4 3